

### **Note to Reader**

Prince Rupert unloads continue to be lower than normal due to ongoing maintenance at the terminal, resulting in reduced unload capacity. While Prince Rupert unloads have averaged 710 per week over the course of the last four weeks, they have reported unloads above the 900-car mark for the two consecutive weeks prior to Week 48. This is consistent with an increase in hopper car orders in this corridor which have risen above 1,000 cars in week 48 and 49 for the third time in the last seven weeks. During Week 48, Prince Rupert unloads fell to less than 600. Alliance Grain Terminal in Vancouver has now begun planned maintenance which is expected to continue until mid-August.

### **SPEED READ**

- Loads on wheels down overnight, reflecting a decline in CN volumes while CP volumes remained unchanged. On a net basis, the levels decreased due to lower traffic levels in the Vancouver, Thunder Bay and Prince Rupert corridors offset by higher volumes in the E Canada and USA/MEX corridors.
- Network fluidity marginally worsened overnight, led by an increase in idle car counts from both CN and CP by 6% and 5%, respectively. The total count of cars for 4+ days from both major railways declined significantly by 32% overnight - now at 549 cars.
- Four days in Week 49 unloads now ahead of prior week's performance by nearly 350 unloads, indicating an improvement in week over week performance across all three major ports.

=====

### **Loads on Wheels**

- Loads on wheels down 5% (-397) overnight and have now decreased for the second consecutive day. The decline was mainly attributed to lower traffic levels on CN while volumes on CP were largely unchanged – combined total at 7,812 and 8% below the trailing 30-day average.
- On a net basis, the decline in loads on wheels reflects lower traffic in the Vancouver, Thunder Bay and Prince Rupert corridors offset by higher traffic in the E Canada and USA/MEX corridors.
- CN volumes declined for two consecutive days, down 10% (-419) overnight due to lower volumes in the Vancouver and Prince Rupert corridors offset by increased volumes in the Thunder Bay and USA/MEX corridors. System wide CN loads on wheels now at 3,913 and 6% below the trailing 30-day average.
- CP volumes largely unchanged (-3) overnight with volume increase in the Vancouver and E Canada corridors cancel out by traffic decline in the Thunder Bay and USA/MEX corridors. CP system wide loads on wheels now at 3,494 and 13% below the trailing 30-day average.
- Vancouver now at 3,828, the lowest seen in the last 30 days, dropped 4% overnight and have now declined for the second consecutive day, now 22% below the trailing 30-day average.
- The Prince Rupert pipeline now at 946, decreased for three consecutive days, down significantly by 13% overnight, in line with the trailing 30-day average.
- Thunder Bay volumes decreased 8% overnight - now at 1,742 and 36% above the trailing 30-day average with 73% of traffic moving on CP.

### **Hopper Car Rationing**

- No hopper car rationing was reported for either CN or CP in week 48 and none expected in week 49.

### **Loads Not Moving**

- **The count of cars not moving for 48+ hours gained 5% (+78) overnight, marking slightly higher counts from both major railways. Idle car counts now at 1,506.**
- CN
  - **The count of idle cars gained 6% (+42) overnight and have now increased for the second consecutive day - idle car counts now at 762.**

- The number of cars idle for 4+ days decreased significantly by 34% overnight - now at 216 cars.
- The count of cars not moving for 7+ days declined for the second consecutive day, down 11% overnight - now at 96 cars.
- Vancouver represents 69% of all idle cars.
- In total 35% of all idle cars are dwelling at origin locations.
- CP
  - **CP counts increased 5% (+36) overnight - idle car counts - now at 744.**
  - The number of cars idle for 4+ days decreased significantly by 31% overnight - now at 333 cars.
  - The number of cars idle for 7+ days surged 237% overnight and have now increased for the second consecutive day - now at 64 cars.
  - Vancouver accounts for 62% of all idle cars.
  - In total 77% of all idle cars are dwelling at origin locations.

### **Port Performance**

- CN and CP reported a total of 1,191 cars unloaded at the three major ports, above the 1,000-car threshold. Four days in Week 49 unloads are tracking ahead of last week's pace by nearly 350 unloads, marking an increase in unloads across all three ports.
- Vancouver
  - 601 unloads reported by CN and CP at the Port of Vancouver; CN - 311 and CP - 290.
  - There are less than 800 cars on site at Vancouver with 330 cars arriving at the port in the last 24 hours.
  - CN and CP have about 500 cars enroute to Vancouver, west of Alberta, with about 100 Kamloops and west and 46% of traffic currently moving on CP.
- Prince Rupert
  - Prince Rupert reported 136 unloads, above the 100-car threshold for the third consecutive day and now ahead last week's unloads after four days by more than 100.
  - Loads on wheels now below 1,000 cars.
  - There are fewer than 600 cars west of Jasper - predominantly Prince George and west.
  - There are nearly 100 cars on site with about 30 cars arriving at the port in the last 24 hours. Given the structure of the pipeline, there appears to be sufficient cars available to support unloads for the remainder of the week.
- Thunder Bay
  - 454 unloads, the highest seen in the last 30 days, was reported at Thunder Bay yesterday. Four days in Week 49 unloads are tracking ahead of last week's pace by more than 100 unloads.
  - There are more than 200 cars on site at Thunder Bay with around 100 cars arriving at the port in the prior 24 hours.
  - There are about 500 cars enroute to Thunder Bay from Winnipeg and east. Cars on hand and those enroute should support unloads for the balance of the week.

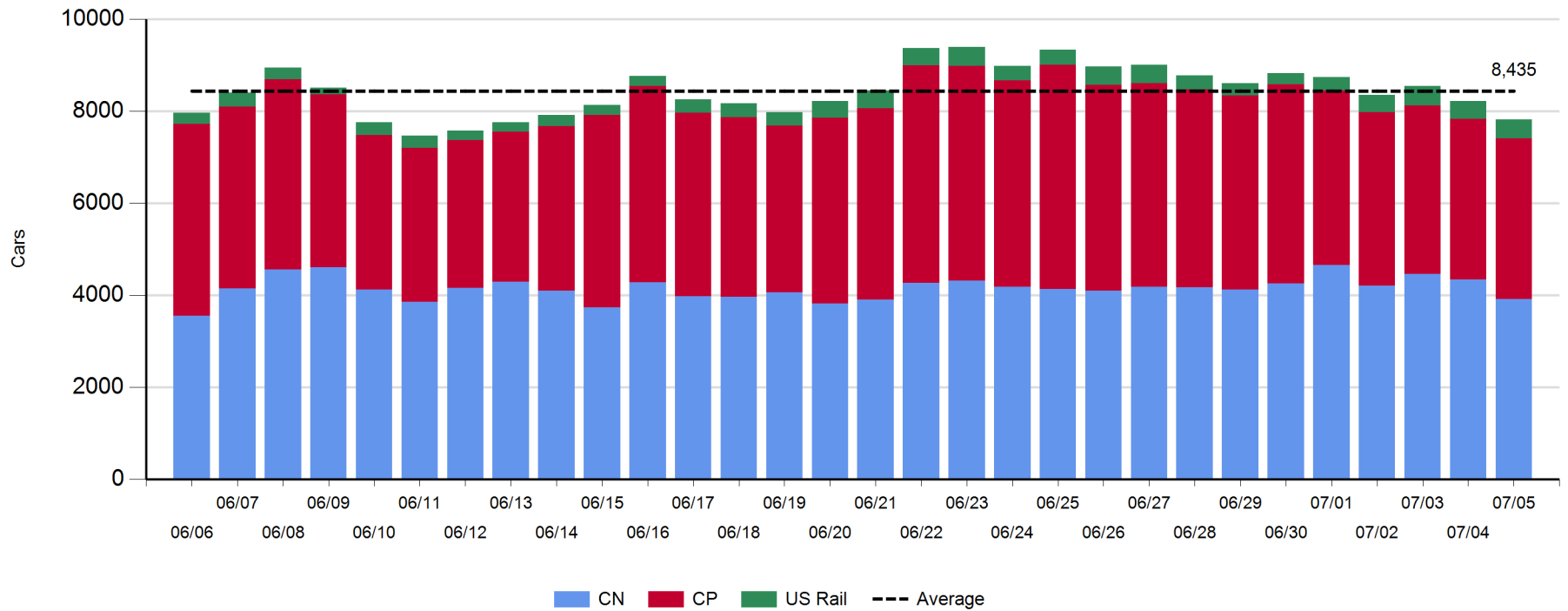
**Daily Loads on Wheels - 7/5/2018**

	E Canada	Prince Rupert	Thunder Bay	USA/MEX	Vancouver	Total
CN	345	946	472	224	1,926	3,913
CP	52		1,270	322	1,850	3,494
Short Line	2				52	54
US Rail				351		351
	399	946	1,742	897	3,828	7,812

**Change in Loads on Wheels - Prior 24 Hours**

	E Canada	Prince Rupert	Thunder Bay	USA/MEX	Vancouver	Total
CN	7	-136	82	35	-407	-419
CP	35		-225	-58	245	-3
Short Line	-3				-11	-14
US Rail				39		39
	39	-136	-143	16	-173	-397

**Loads on Wheels - Prior 30 Days**

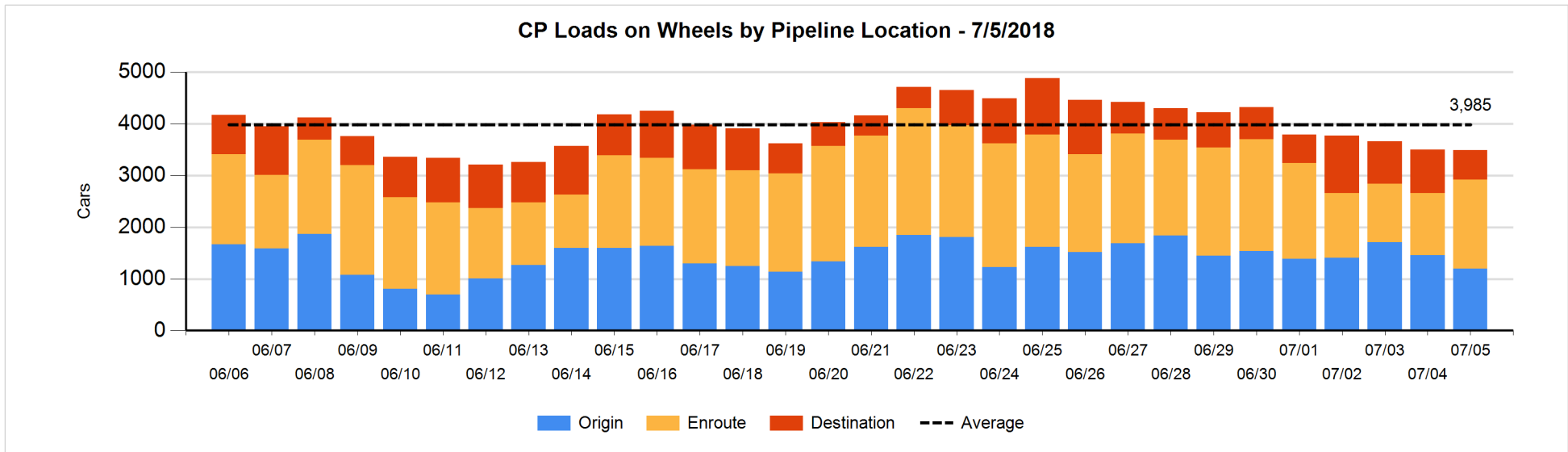
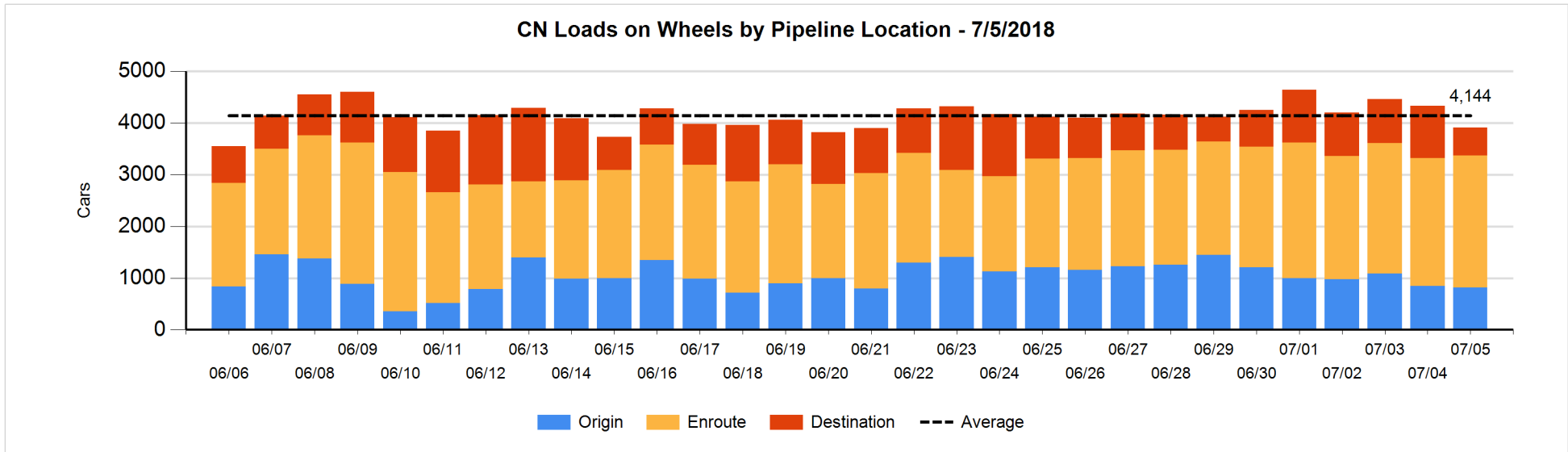


**Daily Loads on Wheels By Pipeline Location - 7/5/2018**

	E Canada	Prince Rupert	Thunder Bay	USA/MEX	Vancouver	Total
CN						
Origin	27	97	200	30	463	817
Enroute	255	754	239	182	1,123	2,553
Destination	63	95	33	12	340	543
	345	946	472	224	1,926	3,913
CP						
Origin	43		266	193	695	1,197
Enroute	8		820	107	785	1,720
Destination	1		184	22	370	577
	52		1,270	322	1,850	3,494
US Rail / Short Line						
Origin						
Enroute				292		292
Destination	2			59	52	113
	2			351	52	405

**Change in Daily Loads on Wheels By Pipeline Location - Prior 24 Hours**

	E Canada	Prince Rupert	Thunder Bay	USA/MEX	Vancouver	Total
CN						
Origin	2	-103	150	25	-106	-32
Enroute	-4	79	50	11	-51	85
Destination	9	-112	-118	-1	-250	-472
	7	-136	82	35	-407	-419
CP						
Origin	35		-283	15	-22	-255
Enroute	0		277	-46	286	517
Destination	0		-219	-27	-19	-265
	35		-225	-58	245	-3
US Rail / Short Line						
Origin						
Enroute				34		34
Destination	-3			5	-11	-9
	-3			39	-11	25

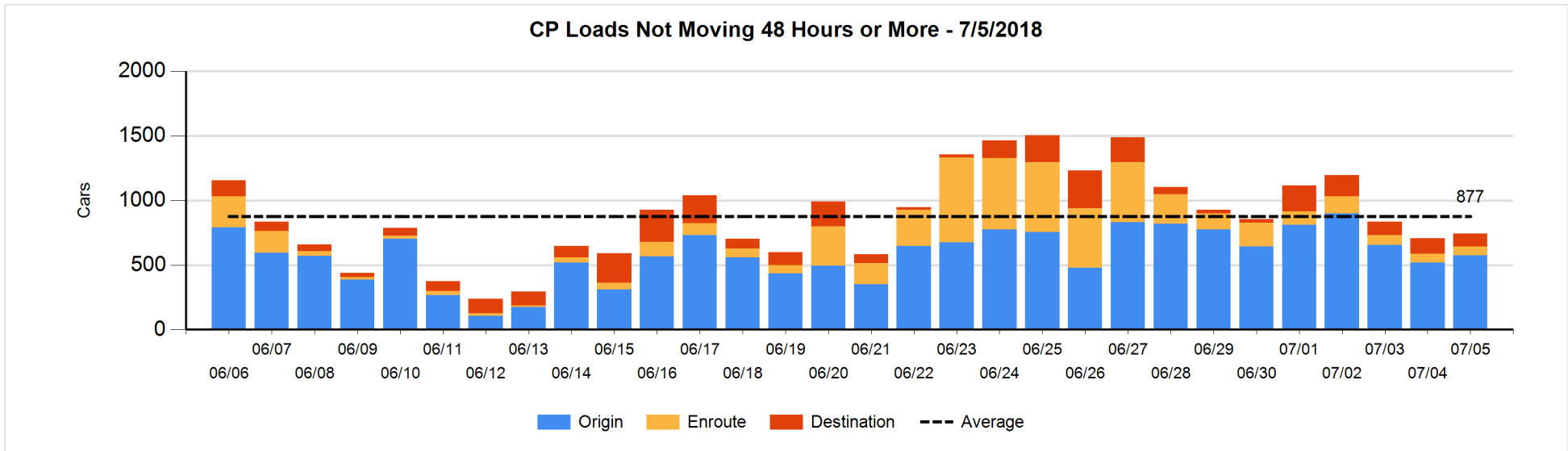
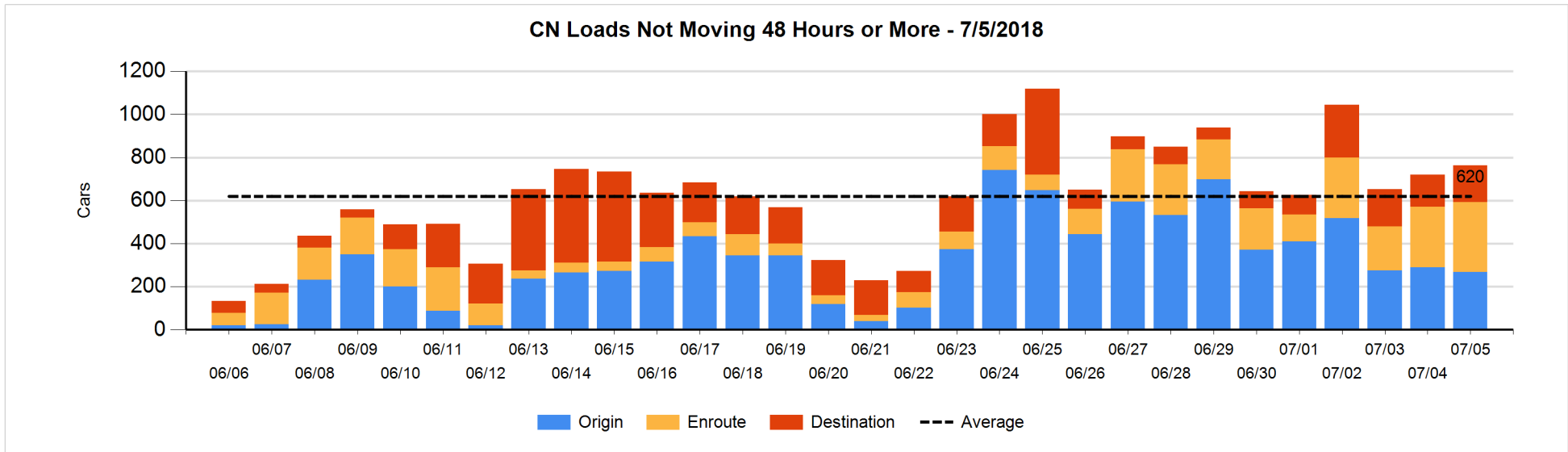


**Loads Not Moving 48 Hours or More - 7/5/2018**

	E Canada	Prince Rupert	Thunder Bay	USA/MEX	Vancouver	Total
<b>CN</b>						
Origin	2			5	261	268
Enroute	77	1		11	236	325
Destination	29	70	32	7	31	169
	108	71	32	23	528	762
<b>CP</b>						
Origin	1		105	95	374	575
Enroute	1		3	40	24	68
Destination			36	2	63	101
	2		144	137	461	744
<b>US Rail / Short Line</b>						
Origin						
Enroute				64		64
Destination				46	14	60
				110	14	124

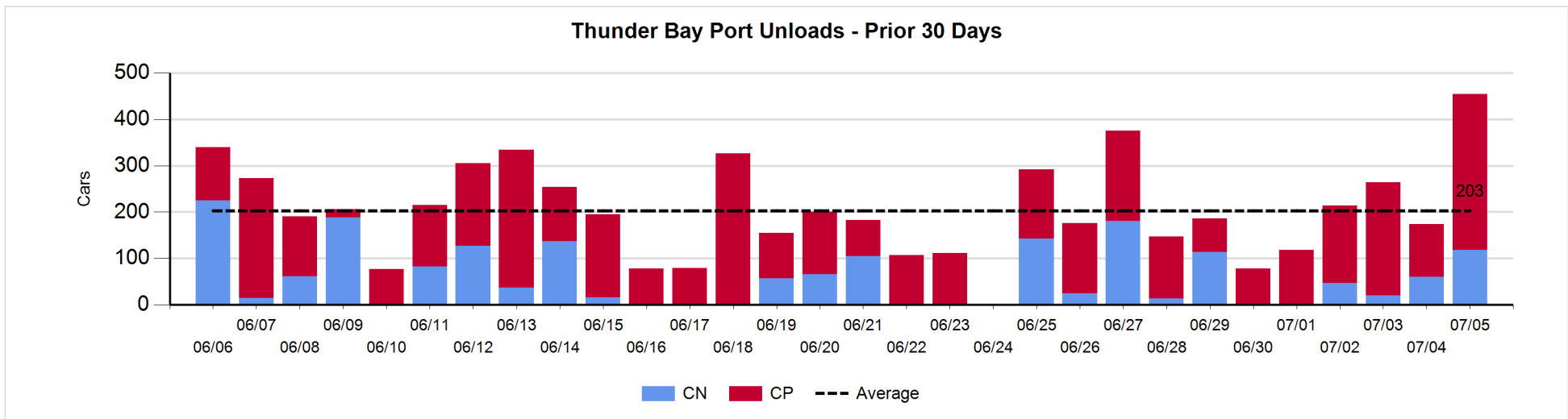
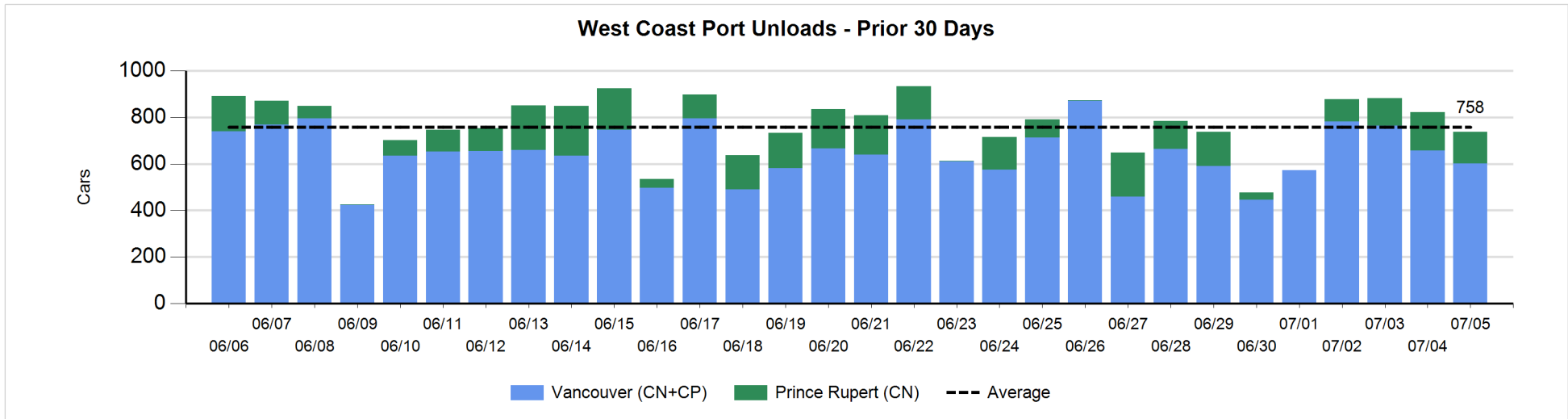
**Change in Loads Not Moving 48 Hours or More - 7/5/2018**

	E Canada	Prince Rupert	Thunder Bay	USA/MEX	Vancouver	Total
<b>CN</b>						
Origin	-23	-103		0	105	-21
Enroute	-15	1		6	52	44
Destination	-4	-26	27	5	17	19
	-42	-128	27	11	174	42
<b>CP</b>						
Origin	1		-58	95	18	56
Enroute	-1		0	0	2	1
Destination			-3	-22	4	-21
	0		-61	73	24	36
<b>US Rail / Short Line</b>						
Origin						
Enroute				-23		-23
Destination	-2			9	-16	-9
	-2			-14	-16	-32



**Port Unloads - 7/5/2018**

	Prince Rupert	Vancouver	West Coast Total	Thunder Bay	Total
CN	136	311	447	118	565
CP		290	290	336	626
	136	601	737	454	1,191





**Port Terminal Status**

**Vancouver**

Daily Activity for 7/5/2018

	Cars Arrived	Cars Received in Interchange	Cars Delivered in Interchange	Cars Placed for Unloading	Loads on Wheels at Destination As of 7/5/2018
CN	190	5	227	283	340
CP	140	227	5	266	370
SRY				9	52

**Port Unloads**

	07/05	07/04	Week To Date	Last Week
CN	311	370	1,651	2,156
CP	290	287	1,153	2,158
SRY	11	15	43	44

**Age Profile of Loaded Cars Waiting Placement for Unloading**

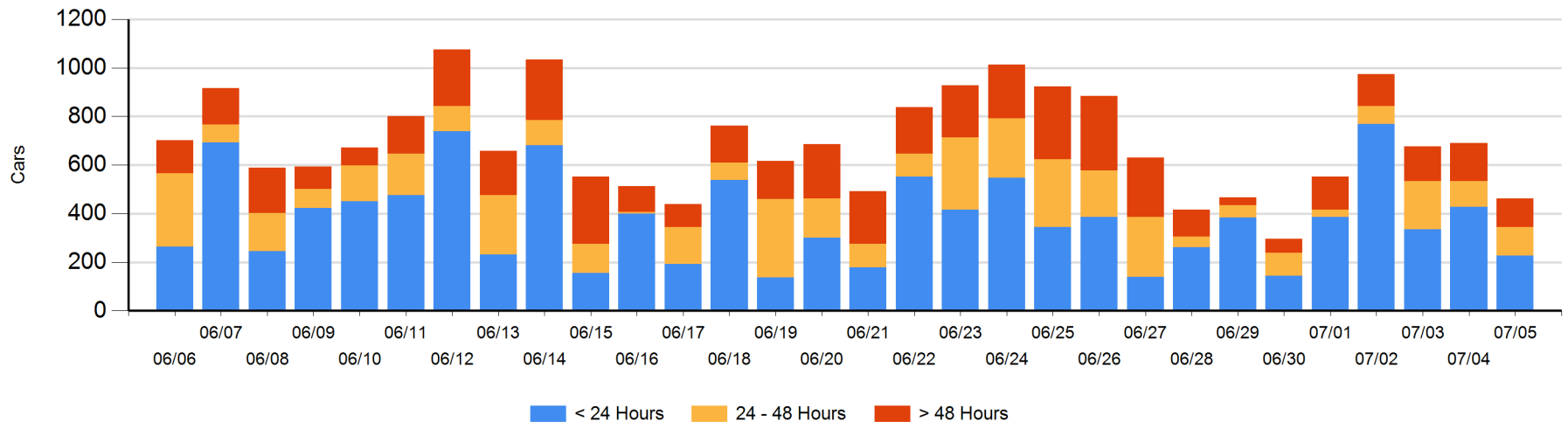
**Today**

	< 24 Hrs	24 - 48 Hrs	> 48-72 Hrs	> 72 Hrs	Total On Hand
CN	130	97	32	29	288
CP	98	20	6	34	158
SRY				16	16

**Change in Last 24 Hours**

	< 24 Hrs	24-48 Hrs	48 - 72 Hrs	> 72 Hrs
CN	-68	49	9	23
CP	-132	-37	-39	-33
SRY				0

**Loaded Cars on Hand Vancouver Waiting for Placement - Last 30 Days All Railways**



**Port Terminal Status**

**Prince Rupert**

**Daily Activity for 7/5/2018**

	Cars Arrived	Cars Received in Interchange	Cars Delivered in Interchange	Cars Placed for Unloading	Loads on Wheels at Destination As of 7/5/2018
CN	24			24	95

**Port Unloads**

	07/05	07/04	Week To Date	Last Week
CN	136	164	512	568

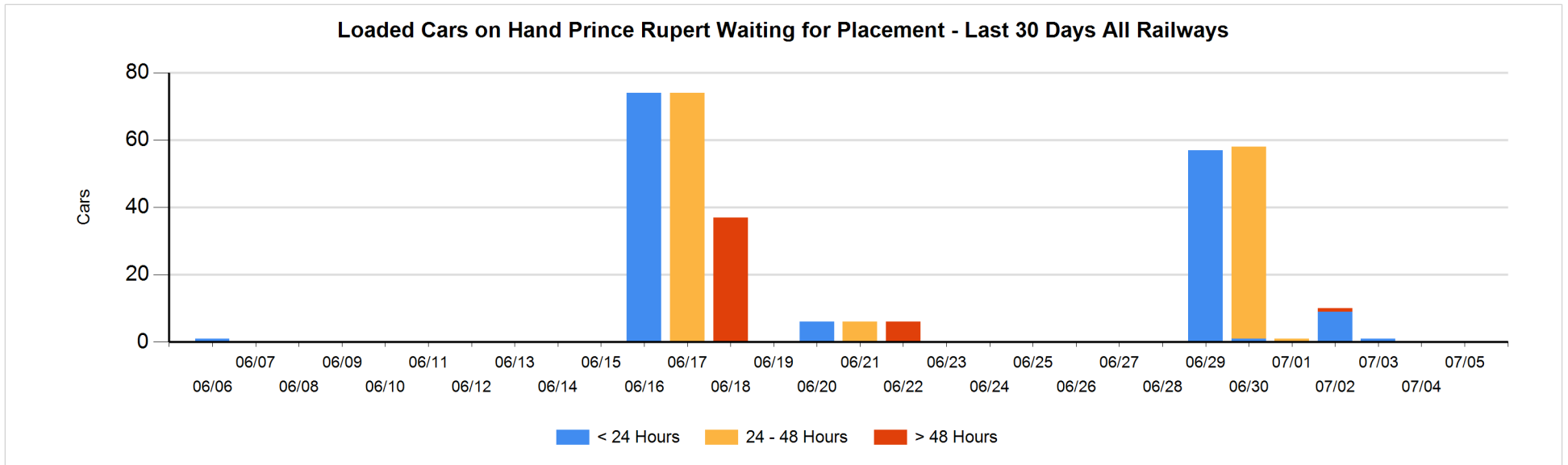
**Age Profile of Loaded Cars Waiting Placement for Unloading**

**Today**

	< 24 Hrs	24 - 48 Hrs	> 48-72 Hrs	> 72 Hrs	Total On Hand
CN					0

**Change in Last 24 Hours**

	< 24 Hrs	24-48 Hrs	48 - 72 Hrs	> 72 Hrs
CN				



**Port Terminal Status**

**Thunder Bay**

Daily Activity for 7/5/2018

	Cars Arrived	Cars Received in Interchange	Cars Delivered in Interchange	Cars Placed for Unloading	Loads on Wheels at Destination As of 7/5/2018
CN				60	33
CP	117			111	184

**Port Unloads**

	07/05	07/04	Week To Date	Last Week
CN	118	60	245	475
CP	336	114	861	897

**Age Profile of Loaded Cars Waiting Placement for Unloading**

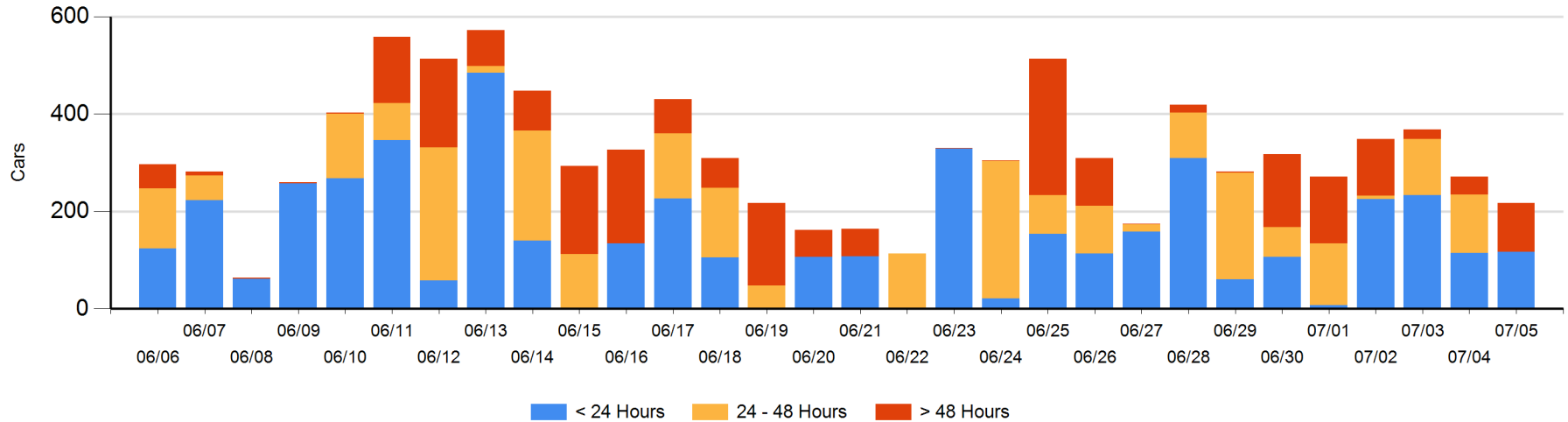
**Today**

	< 24 Hrs	24 - 48 Hrs	> 48-72 Hrs	> 72 Hrs	Total On Hand
CN			6	1	7
CP	117		77	16	210

**Change in Last 24 Hours**

	< 24 Hrs	24-48 Hrs	48 - 72 Hrs	> 72 Hrs
CN	-60	-6	6	0
CP	62	-113	55	2

**Loaded Cars on Hand Thunder Bay Waiting for Placement - Last 30 Days All Railways**



## Measurement Definitions

Loads on Wheels	<p>Count of loaded rail cars including all rail cars that have been released loaded at origin and have not been reported by the railway as unloaded at destination.</p> <p>Counts include all rail cars (hopper cars and boxcars) moving within a pipeline.</p>
Loads Not Moving	<p>Loaded rail cars for which the railways have not reported a movement event for 48 hours or more whether the rail car is at origin, enroute or at destination.</p>
Port Unloads	<p>Count of rail cars reported by railways as unloaded at the western port destinations of Vancouver, Prince Rupert and Thunder Bay.</p> <p>Unload counts include all rail cars (hopper cars and boxcars) unloaded by all receivers including major port terminals, transloaders and other receivers.</p>
Cars Arrived	<p>Count of rail cars reported as arrived at the destination railway terminal.</p>
Cars Received in Interchange	<p>Count of rail cars received in interchange by each railway within a destination railway terminal. Interchange activity is tracked for the Vancouver and Thunder Bay pipelines as applicable.</p>
Cars Delivered in Interchange	<p>Count of rail cars delivered in interchange by each railway within a destination railway terminal. Interchange activity is tracked for the Vancouver and Thunder Bay pipelines as applicable.</p>
Cars Placed for Unloading	<p>Count of rail cars reported by the railways as placed loaded at the receiver's facility for unloading.</p>
Loads on Wheels at Destination	<p>Count of rail cars that remain under load within the destination railway terminal including rail cars that have been reported as placed for unloading but not yet reported as unloaded.</p>
Waiting Placement for Unloading	<p>Count of rail cars that have been reported as arrived at the destination railway terminal but not reported as placed for unloading by the railway.</p> <p>For the Ports of Vancouver, Prince Rupert and Thunder Bay the count of rail cars waiting placement for unloading is categorized by age – i.e. the elapsed time from arrival at destination to the current report date.</p>