

Note to Reader

Prince Rupert unloads continue to be lower than normal due to ongoing maintenance at the terminal, resulting in reduced unload capacity. For Week 49 and 50, they have reported unloads at about 800 and 1000, respectively. Alliance Grain Terminal in Vancouver has now begun planned maintenance which is expected to continue until mid-August.

SPEED READ

- Loads on wheels decreased overnight, reflecting a decline in both CN and CP volumes. On a net basis, volumes decreased due to lower traffic across all corridors.
- Network fluidity worsen overnight due to an increase in idle car counts on both CN and CP by 46% and 12%, respectively. The total count of cars for 4+ days for both railways declined 13% overnight - currently at 835 cars.
- Three days in Week 51 unloads now ahead of prior week's performance by more than 450 unloads, marking an improvement in week over week performance across all three major ports.

=====

Loads on Wheels

- Loads on wheels declined significantly by 11% (-940) overnight and have now decreased for four consecutive days due to lower volumes on both CN and CP - combined total at 7,572, the lowest seen in the last 30 days, and 12% below the trailing 30-day average.
- On a net basis, the fall in loads on wheels reflects lower traffic levels across all corridors.
- CN volumes decreased for the fourth consecutive day, down 10% (-383) overnight with lower volumes across all corridors other than USA/MEX. System wide CN loads on wheels now sits at 3,533, the lowest seen in the last 30 days, and 16% below the trailing 30-day average.
- CP volumes declined significantly by 14% (-595) overnight, led by a decline in traffic across all corridors. CP system wide loads on wheels now sits at 3,764 and 7% below the trailing 30-day average.
- Vancouver now sits at 4,273, decreased for the fourth consecutive day, down 9% overnight and 10% below the trailing 30-day average.
- The Prince Rupert pipeline currently at 729, the lowest seen in the last 30 days, declined significantly by 16% overnight and have now decreased for two consecutive days, now 27% below the trailing 30 day-average.
- Thunder Bay volumes reduced significantly by 15% overnight - now at 1,508 and in line with the trailing 30-day average with 84% of traffic moving on CP.

Hopper Car Rationing

- No hopper car rationing was reported for either CN or CP in week 50 and none expected in week 51.

Loads Not Moving

- **The count of cars not moving for 48+ hours rose significantly by 24% (+350) overnight, indicating higher counts on both CN and CP. Idle car counts now at 1,795 and 3% above the trailing 30-day average.**
- CN
 - **The count of idle cars surged by 46% (+234) overnight - idle car counts now at 738.**
 - The number of cars idle for 4+ days declined significantly by 19% overnight - currently at 244 cars.
 - The count of cars not moving for 7+ days decreased significantly by 20% overnight - presently at 78 cars.
 - Vancouver represents 53% of all idle cars.

- In total 76% of all idle cars are dwelling at origin locations.
- CP
 - **CP counts rose by 12% (+116) overnight - idle car counts currently at 1,057.**
 - The number of cars idle for 4+ days reduced by 11% overnight - currently at 591 cars.
 - The number of cars idle for 7+ days decreased 8% overnight - now sits at 99 cars.
 - Vancouver accounts for 72% of all idle cars.
 - In total 70% of all idle cars are dwelling at origin locations.

Port Performance

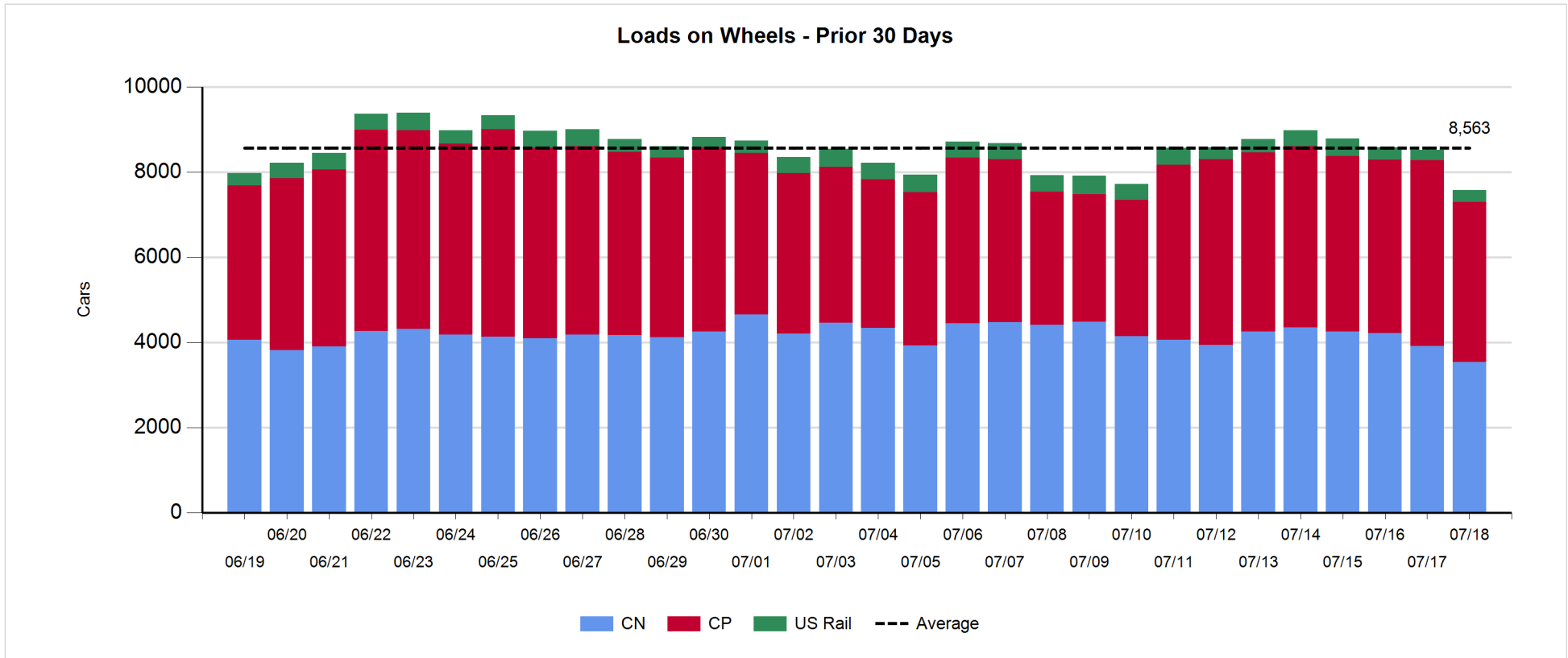
- CN and CP reported a total of 1,149 cars unloaded at the three major ports, above the 1,000-car threshold for the third consecutive day, and 25% above the trailing 30-day average. Three days in Week 51 unloads are tracking ahead of last week's pace by more than 450 unloads, reflecting an increase in unloads across all three ports.
- Vancouver
 - 641 unloads reported by CN and CP at the Port of Vancouver; CN - 433 and CP - 208. Three days in Week 51 unloads are tracking ahead of last week's performance by nearly 300 unloads.
 - There are about 750 cars on site at Vancouver with around 500 cars arriving at the port in the last 24 hours.
 - CN and CP have nearly 500 cars enroute to Vancouver, west of Alberta, with fewer than 350 Kamloops and west and 54% of traffic currently moving on CN.
- Prince Rupert
 - Prince Rupert reported 154 unloads, above the 100-car threshold for the seventh consecutive day, now ahead of last week's unloads after three days by nearly 100.
 - Loads on wheels now below 1,000 cars.
 - There are less than 100 cars west of Jasper - predominantly Prince George and west.
 - There are about 200 cars on site with nearly 250 cars arriving at the port in the last 24 hours. Given the structure of the pipeline, there appears to be sufficient cars available to support unloads for the next few days.
- Thunder Bay
 - 354 unloads reported at Thunder Bay yesterday. Three days in Week 51 unloads are tracking ahead of last week's pace by more than 100 unloads.
 - There are nearly 600 cars on site at Thunder Bay with fewer than 500 cars arriving at the port in the prior 24 hours.
 - There are about 300 cars enroute to Thunder Bay from Winnipeg and east. Cars on hand and those enroute should support unloads for the balance of the week.

Daily Loads on Wheels - 7/18/2018

	E Canada	Prince Rupert	Thunder Bay	USA/MEX	Vancouver	Total
CN	336	729	245	133	2,090	3,533
CP	126		1,263	198	2,177	3,764
Short Line	38				4	42
US Rail				231	2	233
	500	729	1,508	562	4,273	7,572

Change in Loads on Wheels - Prior 24 Hours

	E Canada	Prince Rupert	Thunder Bay	USA/MEX	Vancouver	Total
CN	-31	-142	-81	3	-132	-383
CP	-4		-178	-122	-291	-595
Short Line	0				-12	-12
US Rail				50	0	50
	-35	-142	-259	-69	-435	-940



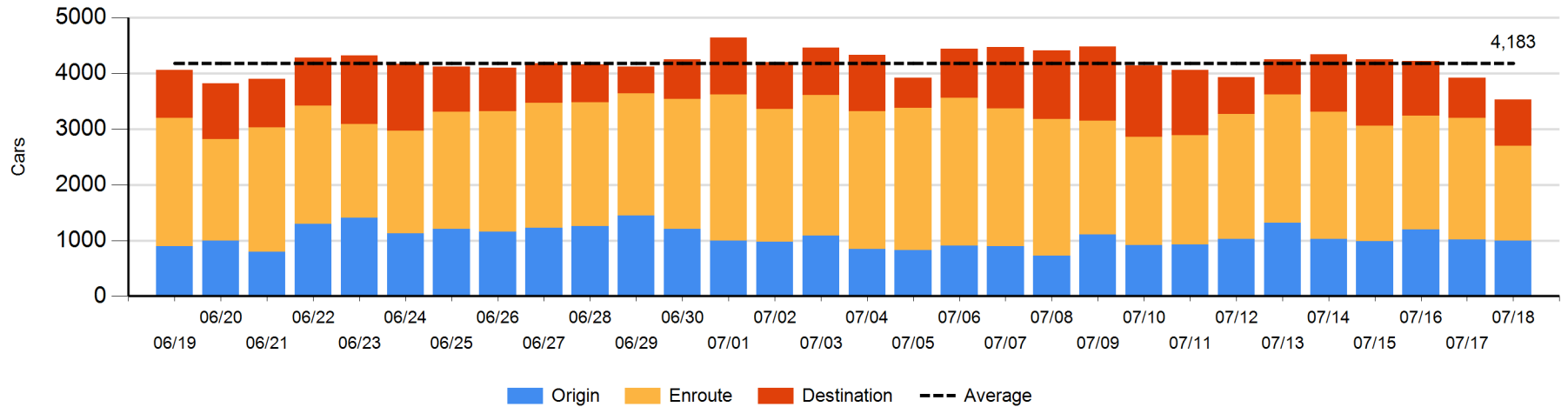
Daily Loads on Wheels By Pipeline Location - 7/18/2018

	E Canada	Prince Rupert	Thunder Bay	USA/MEX	Vancouver	Total
CN						
Origin	73	105	140	35	646	999
Enroute	175	442	1	91	994	1,703
Destination	88	182	104	7	450	831
	336	729	245	133	2,090	3,533
CP						
Origin	3		401	18	908	1,330
Enroute	122		383	164	983	1,652
Destination	1		479	16	286	782
	126		1,263	198	2,177	3,764
US Rail / Short Line						
Origin						
Enroute	25			90		115
Destination	13			141	6	160
	38			231	6	275

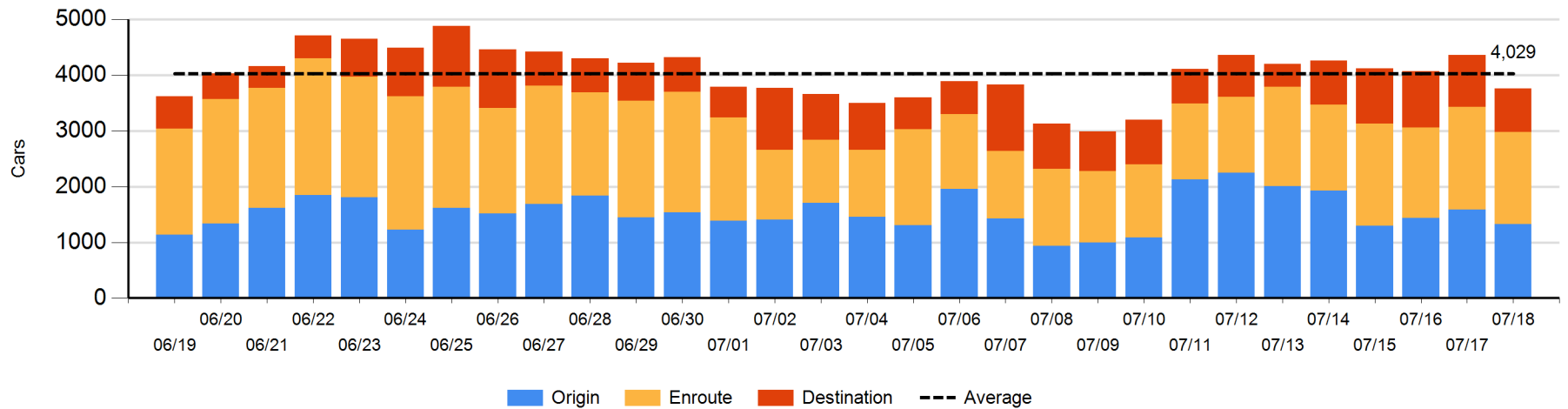
Change in Daily Loads on Wheels By Pipeline Location - Prior 24 Hours

	E Canada	Prince Rupert	Thunder Bay	USA/MEX	Vancouver	Total
CN						
Origin	28	-15	42	8	-76	-13
Enroute	-31	-223	-94	0	-134	-482
Destination	-28	96	-29	-5	78	112
	-31	-142	-81	3	-132	-383
CP						
Origin	2		-174	1	-89	-260
Enroute	-6		-167	-30	13	-190
Destination	0		163	-93	-215	-145
	-4		-178	-122	-291	-595
US Rail / Short Line						
Origin						
Enroute	0			-7		-7
Destination	0			57	-12	45
	0			50	-12	38

CN Loads on Wheels by Pipeline Location - 7/18/2018



CP Loads on Wheels by Pipeline Location - 7/18/2018

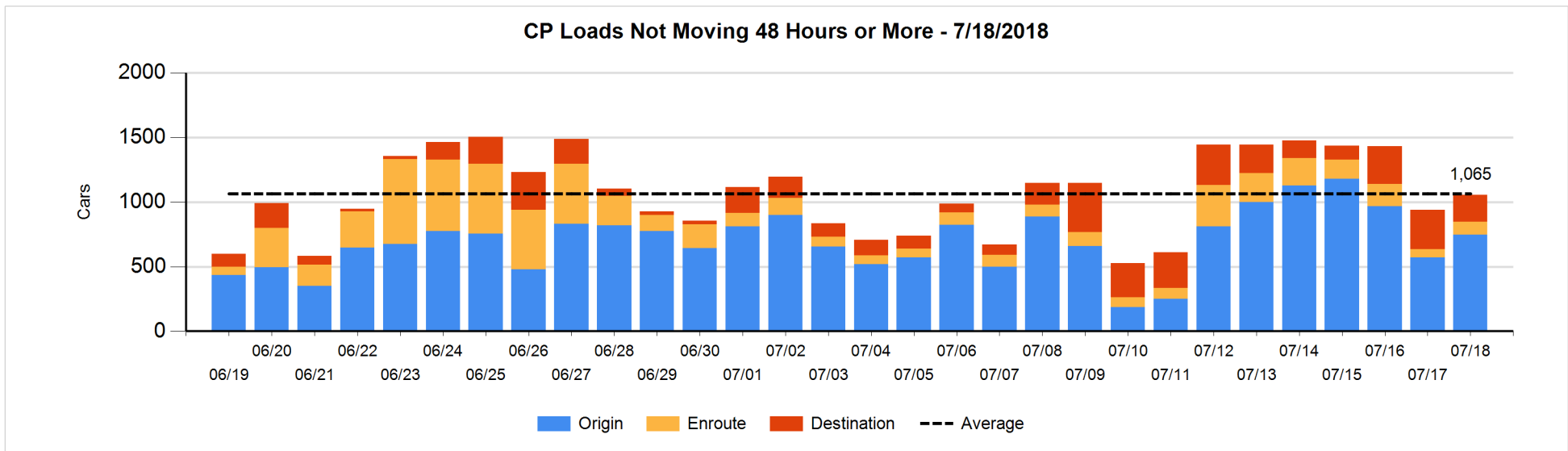
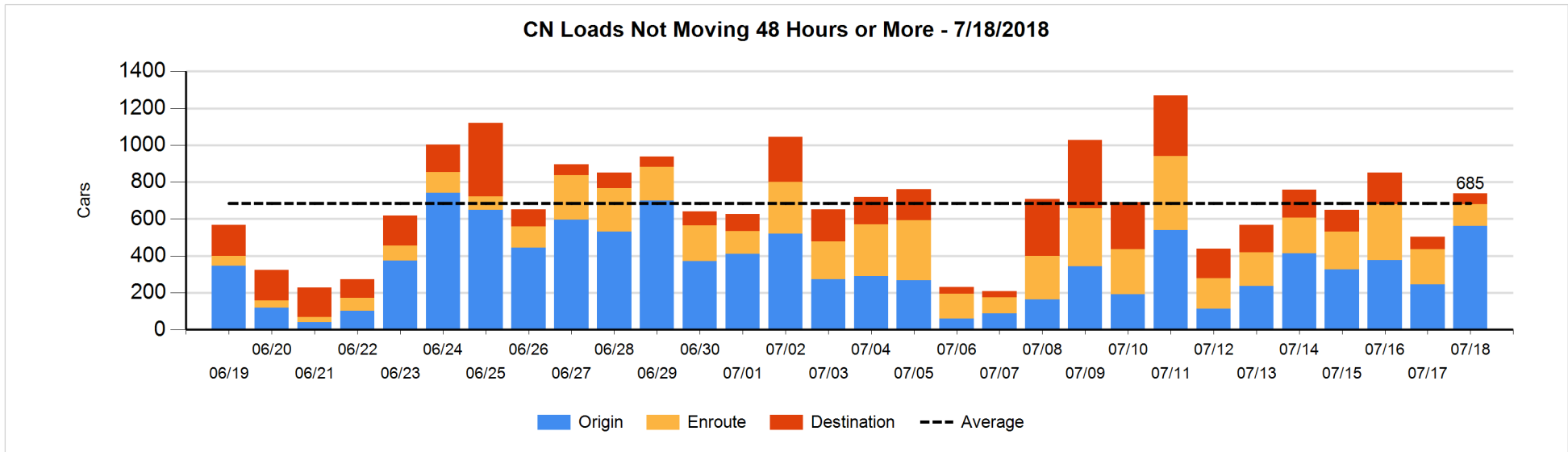


Loads Not Moving 48 Hours or More - 7/18/2018

	E Canada	Prince Rupert	Thunder Bay	USA/MEX	Vancouver	Total
CN						
Origin	41	105	98	2	316	562
Enroute	53		1	4	60	118
Destination	34			7	17	58
	128	105	99	13	393	738
CP						
Origin	1		50	14	680	745
Enroute	31		10	34	27	102
Destination	1		151	1	57	210
	33		211	49	764	1057
US Rail / Short Line						
Origin						
Enroute	20			24		44
Destination				8	3	11
	20			32	3	55

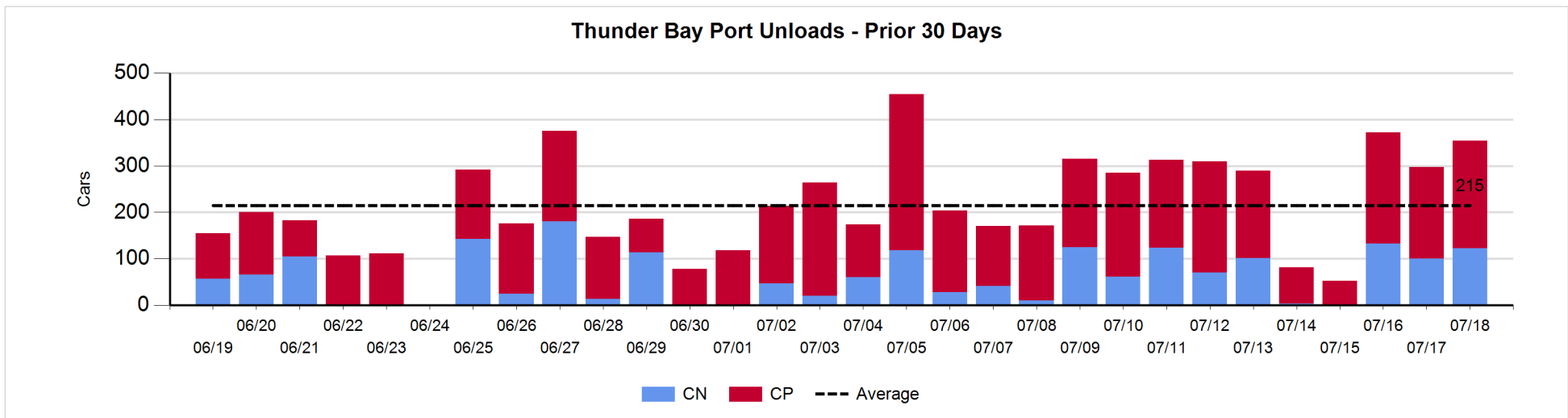
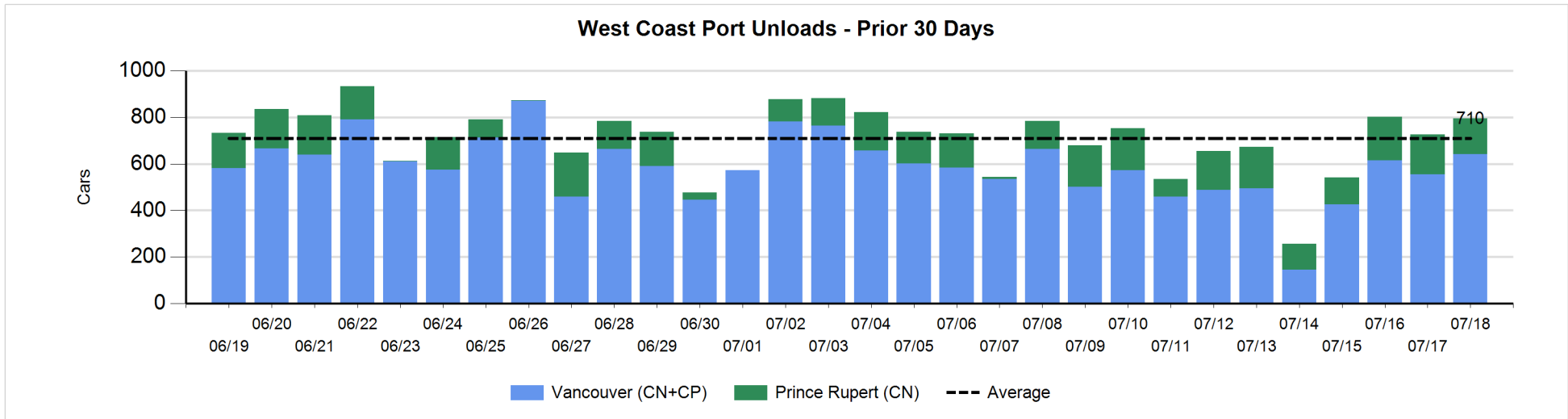
Change in Loads Not Moving 48 Hours or More - 7/18/2018

	E Canada	Prince Rupert	Thunder Bay	USA/MEX	Vancouver	Total
CN						
Origin	15	105	98	2	96	316
Enroute	-1	-44	0	1	-28	-72
Destination	10	-26		1	5	-10
	24	35	98	4	73	234
CP						
Origin	1		47	13	112	173
Enroute	31		10	-1	-2	38
Destination	1		44	0	-140	-95
	33		101	12	-30	116
US Rail / Short Line						
Origin						
Enroute	-3			0		-3
Destination	-9			-23	1	-31
	-12			-23	1	-34



Port Unloads - 7/18/2018

	Prince Rupert	Vancouver	West Coast Total	Thunder Bay	Total
CN	154	433	587	123	710
CP		208	208	231	439
	154	641	795	354	1,149



Port Terminal Status

Vancouver

Daily Activity for 7/18/2018

	Cars Arrived	Cars Received in Interchange	Cars Delivered in Interchange	Cars Placed for Unloading	Loads on Wheels at Destination As of 7/18/2018
CN	387	241	56	274	450
CP	118	56	241	181	286
SRY				11	4

Port Unloads

	07/18	07/17	Week To Date	Last Week
CN	433	351	1,230	2,576
CP	208	204	580	511
SRY	12	20	42	58

Age Profile of Loaded Cars Waiting Placement for Unloading

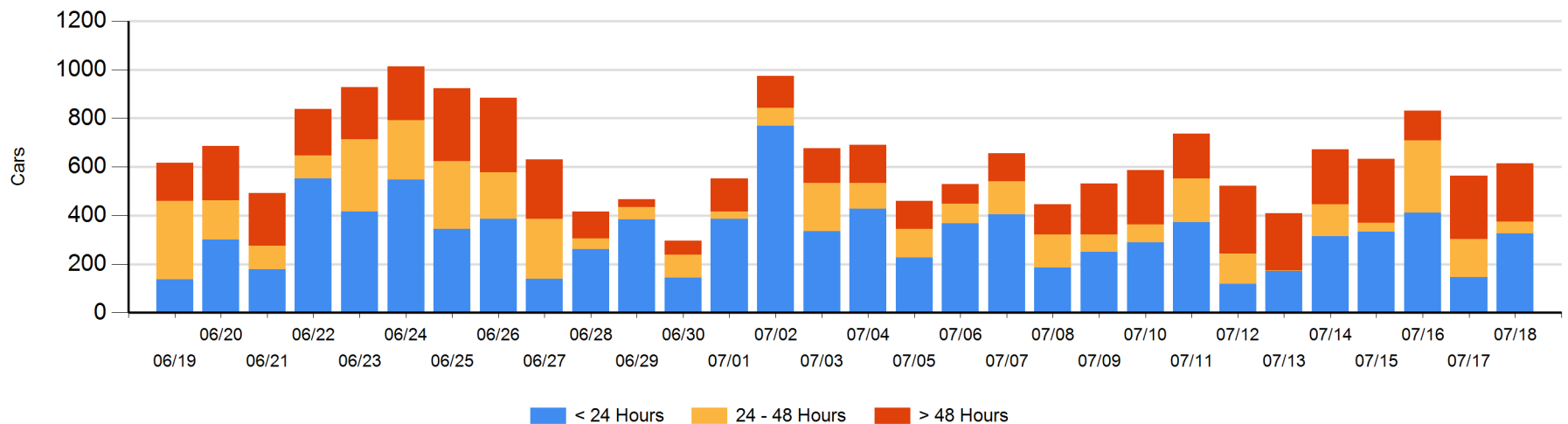
Today

	< 24 Hrs	24 - 48 Hrs	> 48-72 Hrs	> 72 Hrs	Total On Hand
CN	320		36	17	373
CP	6	47	48	139	240
SRY					0

Change in Last 24 Hours

	< 24 Hrs	24-48 Hrs	48 - 72 Hrs	> 72 Hrs
CN	223	-58	22	2
CP	-41	-51	-158	113
SRY				

Loaded Cars on Hand Vancouver Waiting for Placement - Last 30 Days All Railways



Port Terminal Status

Prince Rupert

Daily Activity for 7/18/2018

	Cars Arrived	Cars Received in Interchange	Cars Delivered in Interchange	Cars Placed for Unloading	Loads on Wheels at Destination As of 7/18/2018
CN	240			241	182

Port Unloads

	07/18	07/17	Week To Date	Last Week
CN	154	171	513	1,004

Age Profile of Loaded Cars Waiting Placement for Unloading

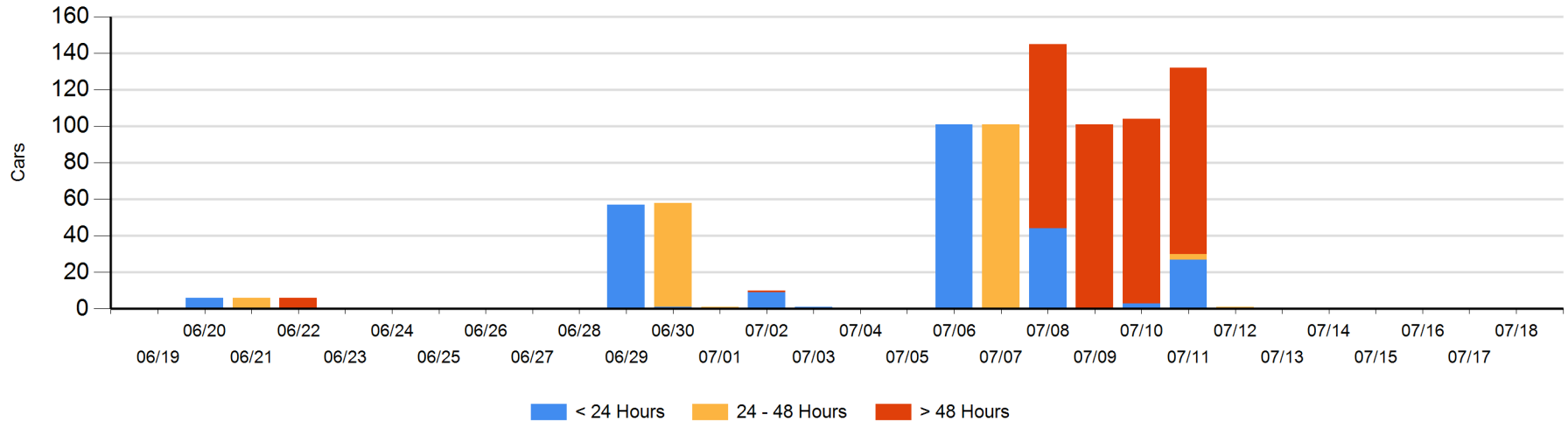
Today

	< 24 Hrs	24 - 48 Hrs	> 48-72 Hrs	> 72 Hrs	Total On Hand
CN					0

Change in Last 24 Hours

	< 24 Hrs	24-48 Hrs	48 - 72 Hrs	> 72 Hrs
CN				

Loaded Cars on Hand Prince Rupert Waiting for Placement - Last 30 Days All Railways



Port Terminal Status

Thunder Bay

Daily Activity for 7/18/2018

	Cars Arrived	Cars Received in Interchange	Cars Delivered in Interchange	Cars Placed for Unloading	Loads on Wheels at Destination As of 7/18/2018
CN	94			117	104
CP	393			173	479

Port Unloads

	07/18	07/17	Week To Date	Last Week
CN	123	100	356	485
CP	231	197	667	1,162

Age Profile of Loaded Cars Waiting Placement for Unloading

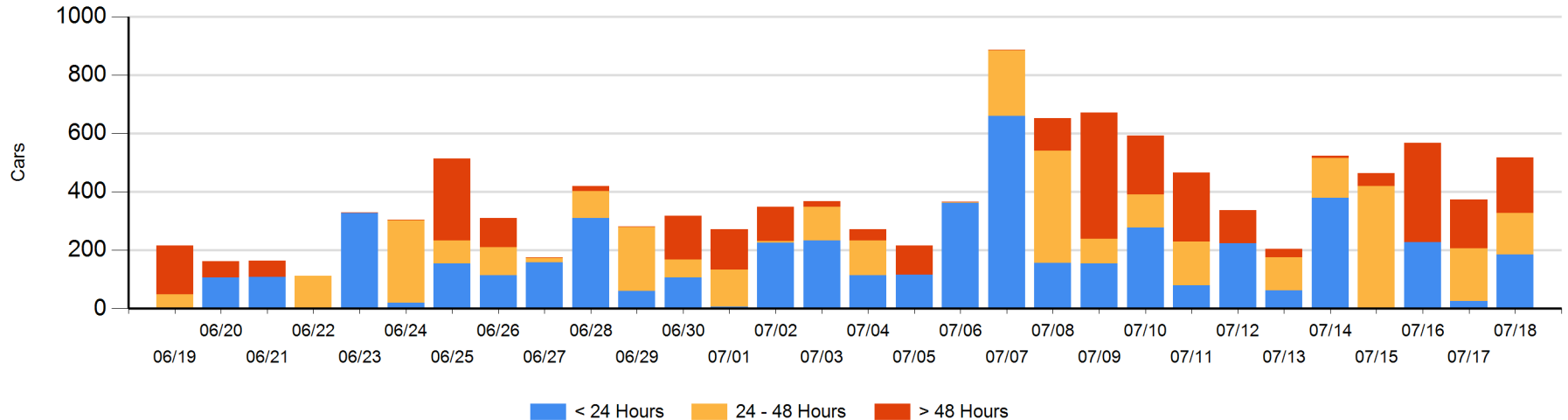
Today

	< 24 Hrs	24 - 48 Hrs	> 48-72 Hrs	> 72 Hrs	Total On Hand
CN					0
CP	186	141	90	101	518

Change in Last 24 Hours

	< 24 Hrs	24-48 Hrs	48 - 72 Hrs	> 72 Hrs
CN		-10		-13
CP	161	-31	90	-53

Loaded Cars on Hand Thunder Bay Waiting for Placement - Last 30 Days All Railways



Measurement Definitions

Loads on Wheels	<p>Count of loaded rail cars including all rail cars that have been released loaded at origin and have not been reported by the railway as unloaded at destination.</p> <p>Counts include all rail cars (hopper cars and boxcars) moving within a pipeline.</p>
Loads Not Moving	<p>Loaded rail cars for which the railways have not reported a movement event for 48 hours or more whether the rail car is at origin, enroute or at destination.</p>
Port Unloads	<p>Count of rail cars reported by railways as unloaded at the western port destinations of Vancouver, Prince Rupert and Thunder Bay.</p> <p>Unload counts include all rail cars (hopper cars and boxcars) unloaded by all receivers including major port terminals, transloaders and other receivers.</p>
Cars Arrived	<p>Count of rail cars reported as arrived at the destination railway terminal.</p>
Cars Received in Interchange	<p>Count of rail cars received in interchange by each railway within a destination railway terminal. Interchange activity is tracked for the Vancouver and Thunder Bay pipelines as applicable.</p>
Cars Delivered in Interchange	<p>Count of rail cars delivered in interchange by each railway within a destination railway terminal. Interchange activity is tracked for the Vancouver and Thunder Bay pipelines as applicable.</p>
Cars Placed for Unloading	<p>Count of rail cars reported by the railways as placed loaded at the receiver's facility for unloading.</p>
Loads on Wheels at Destination	<p>Count of rail cars that remain under load within the destination railway terminal including rail cars that have been reported as placed for unloading but not yet reported as unloaded.</p>
Waiting Placement for Unloading	<p>Count of rail cars that have been reported as arrived at the destination railway terminal but not reported as placed for unloading by the railway.</p> <p>For the Ports of Vancouver, Prince Rupert and Thunder Bay the count of rail cars waiting placement for unloading is categorized by age – i.e. the elapsed time from arrival at destination to the current report date.</p>