

Note to Reader

Alliance Grain Terminal in Vancouver has now begun planned maintenance which is expected to continue until mid-August.

SPEED READ

- Loads on wheels declined overnight, reflecting a decrease in CN volumes with CP volumes remained unchanged. On a net basis, volumes declined due to lower traffic in the Vancouver and USA/MEX corridors offset by higher volumes in the Thunder Bay, Prince Rupert and E Canada corridors.
- Network fluidity deteriorated overnight, led by an increase in idle car counts on both CN and CP by 46% and 31%, respectively. The total count of cars for 4+ days on both railways rose 8% overnight - currently at 594 cars.
- Week 51 unloads finished ahead of prior week's performance by more than 700 unloads, indicating an improvement in week over week performance at Vancouver and Thunder Bay offset by reduced unloads at Prince Rupert.

=====

Loads on Wheels

- Loads on wheels decreased 5% (-407) overnight due to lower traffic levels on CN - combined total at 7,593 and 10% below the trailing 30-day average.
- On a net basis, the decline in loads on wheels displays lower volumes in the Vancouver and USA/MEX corridors offset by higher volumes in the Thunder Bay, Prince Rupert and E Canada corridors.
- CN volumes decreased significantly by 10% (-414) overnight with reduced traffic in the Vancouver and USA/MEX corridors offset by increased volumes in the Thunder Bay, Prince Rupert and E Canada corridors. System wide CN loads on wheels currently sits at 3,588 and 14% below the trailing 30-day average.
- CP volumes were unchanged (0) overnight driven by a rise in traffic levels in the Thunder Bay corridor cancelled out by reduced volumes in the Vancouver and USA/MEX corridors. CP system wide loads on wheels currently at 3,856 and 3% below the trailing 30-day average.
- Vancouver currently at 3,673, down significantly by 13% (-553) overnight and have now decreased for two consecutive days and 20% below the trailing 30-day average.
- The Prince Rupert pipeline now sits at 1,166, increased for the third consecutive day, rose slightly by 2% (+18) overnight and 18% above the trailing 30-day average.
- Thunder Bay volumes gained 8% (+128) overnight and have now increased for the third consecutive day - now sits at 1,643 and 4% above the trailing 30-day average with 76% of traffic moving on CP.

Hopper Car Rationing

- No hopper car rationing was reported for either CN or CP in week 51 and none expected in week 52.

Loads Not Moving

- **The count of cars not moving for 48+ hours increased significantly by 40% (+547) overnight, indicating higher counts on both railways. Idle car counts currently at 1,926 and 5% above the trailing 30-day average.**
- CN
 - **The count of idle cars surged by 46% (+364) overnight and have now increased for two consecutive days - idle car counts now at 1,157.**
 - The number of cars idle for 4+ days increased for the fourth consecutive day, up 9% (+32) overnight – presently at 392 cars.
 - The count of cars not moving for 7+ days declined significantly by 77% (-59) overnight - now at 18 cars, the lowest seen in the last 30 days.

- Vancouver represents 65% of all idle cars.
- In total 63% of all idle cars are dwelling at origin locations.
- CP
 - **CP counts rose significantly by 31% (+183) overnight - idle car counts currently at 769.**
 - The number of cars idle for 4+ days gained 5% (+10) overnight - presently at 202 cars.
 - The number of cars idle for 7+ days increased 3% (+1) overnight - now sits at 32 cars.
 - Vancouver accounts for 56% of all idle cars.
 - In total 53% of all idle cars are dwelling at origin locations.

Port Performance

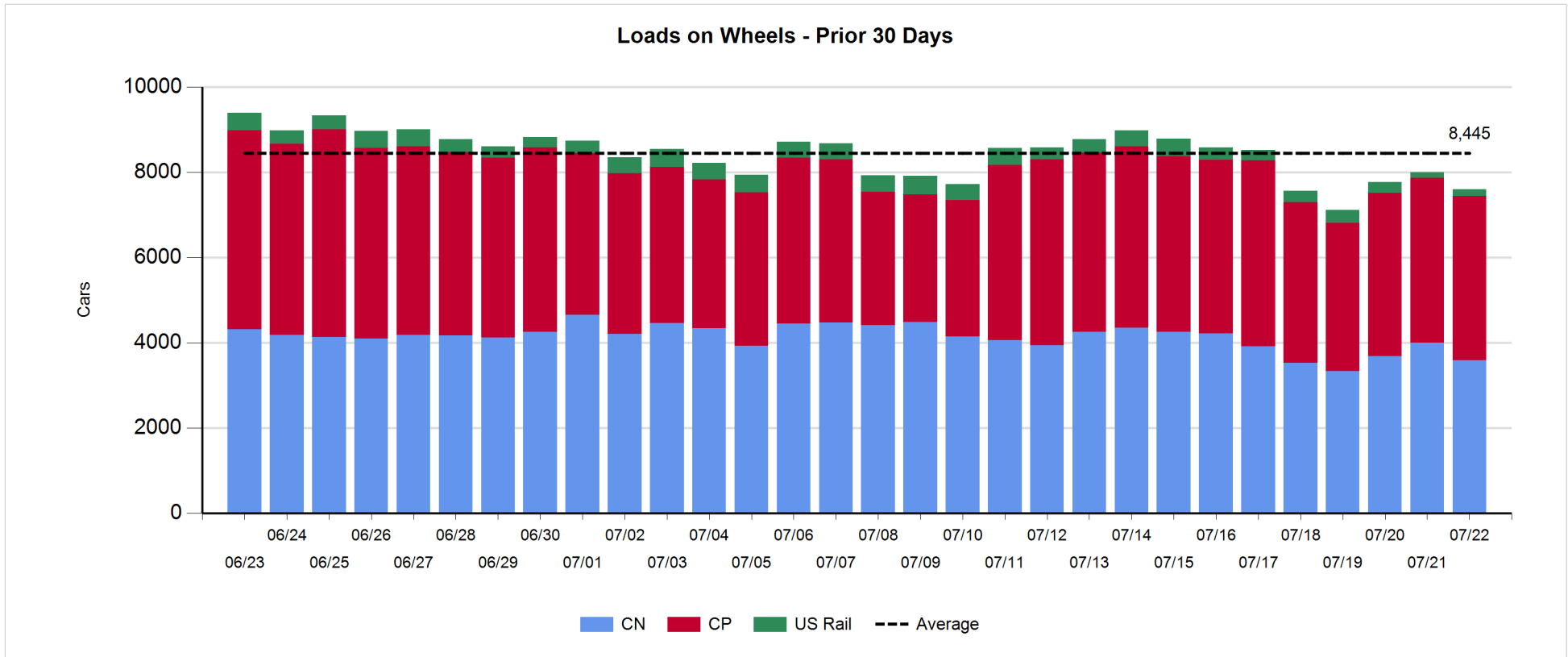
- CN and CP reported a total of 835 cars unloaded at the three major ports, below the 1,000-car threshold for the fourth consecutive day, and 7% below the trailing 30 day-average. Week 51 unloads concluded ahead of last week's pace by more than 700 unloads, indicating higher unloads at Vancouver and Thunder Bay offset by lower unloads at Prince Rupert.
- Vancouver
 - 667 unloads reported by CN and CP at the Port of Vancouver; CN - 393 and CP - 274. Week 51 unloads finished ahead of last week's performance by more than 650 unloads.
 - There are less than 900 cars on site at Vancouver with more than 350 cars arriving at the port in the last 24 hours.
 - CN and CP have about 700 cars enroute to Vancouver, west of Alberta, with nearly 500 Kamloops and west and 65% of traffic currently moving on CP.
- Prince Rupert
 - Prince Rupert reported 88 unloads, below the 100-car threshold for the third consecutive day, ended behind last week's unloads by around 150.
 - Loads on wheels now above 1,000 cars.
 - There are about 100 cars west of Jasper - mostly at Grande Prairie and Jasper.
 - There are more than 200 cars on site with more than 150 cars arriving at the port in the last 24 hours. Given the structure of the pipeline, there is a chance unloads may be challenged in the next few days.
- Thunder Bay
 - 80 unloads reported at Thunder Bay yesterday. Week 51 unloads finished ahead of last week's pace by more than 200 unloads.
 - There are around 400 cars on site at Thunder Bay with more than 150 cars arriving at the port in the prior 24 hours.
 - There are fewer than 250 cars enroute to Thunder Bay from Winnipeg and east. Cars on hand and those enroute should support unloads in the early part of week 52.

Daily Loads on Wheels - 7/22/2018

	E Canada	Prince Rupert	Thunder Bay	USA/MEX	Vancouver	Total
CN	277	1,166	393	211	1,541	3,588
CP	152		1,250	329	2,125	3,856
Short Line	2				7	9
US Rail				140		140
	431	1,166	1,643	680	3,673	7,593

Change in Loads on Wheels - Prior 24 Hours

	E Canada	Prince Rupert	Thunder Bay	USA/MEX	Vancouver	Total
CN	3	18	98	-5	-528	-414
CP	0		30	-1	-29	0
Short Line	0				4	4
US Rail				3		3
	3	18	128	-3	-553	-407

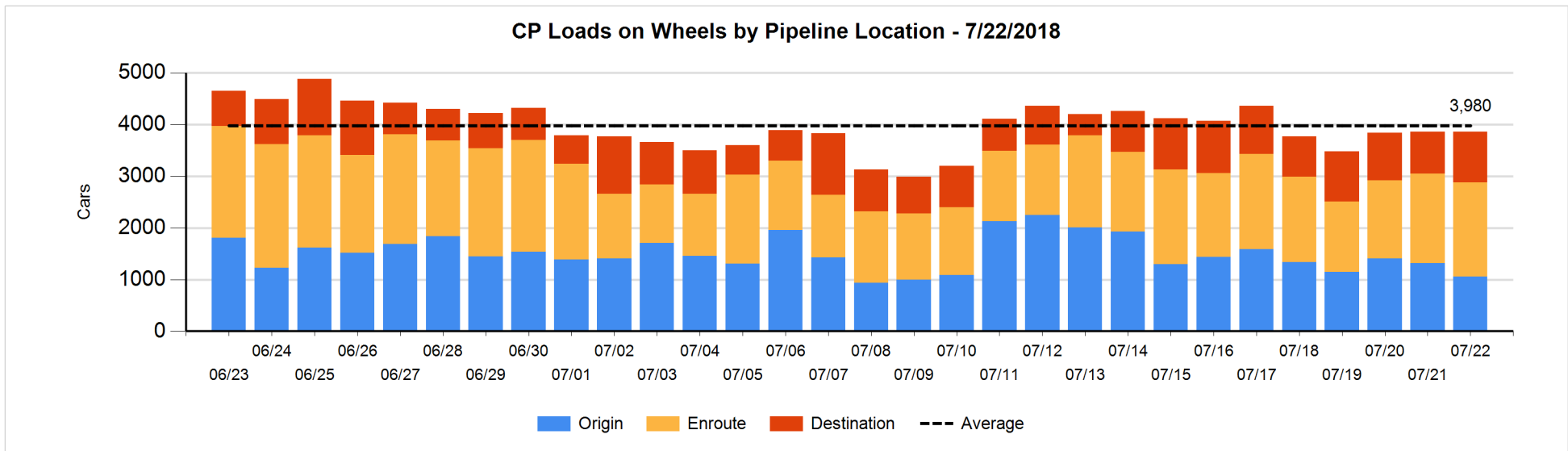
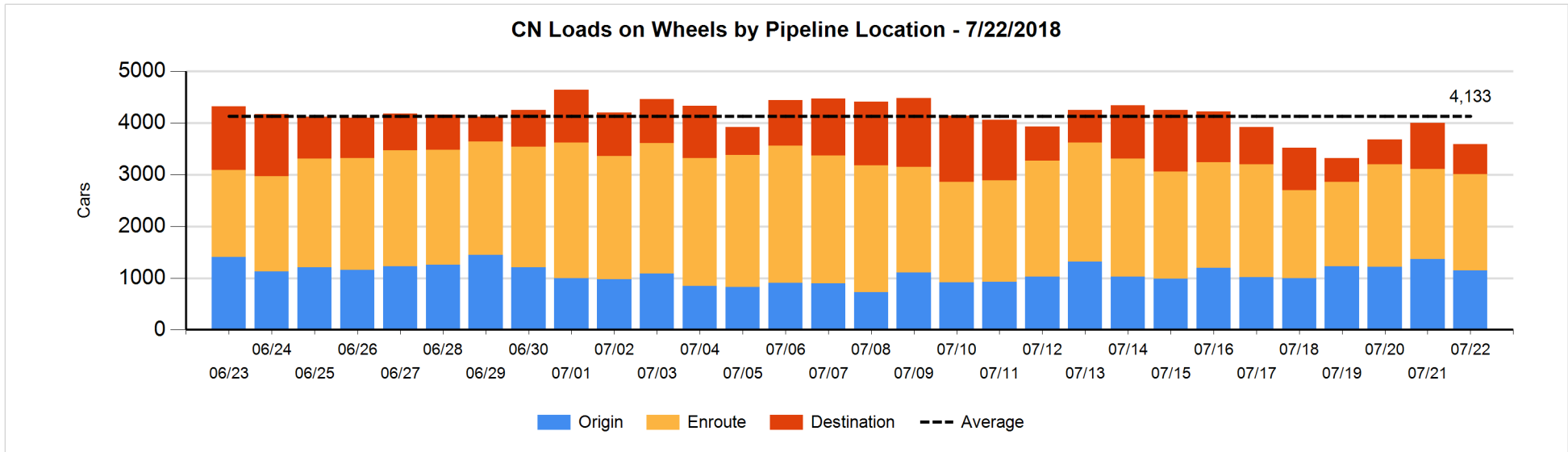


Daily Loads on Wheels By Pipeline Location - 7/22/2018

	E Canada	Prince Rupert	Thunder Bay	USA/MEX	Vancouver	Total
CN						
Origin		383	147	88	526	1,144
Enroute	230	562	246	110	713	1,861
Destination	47	221		13	302	583
	277	1,166	393	211	1,541	3,588
CP						
Origin	26		274	262	498	1,060
Enroute	125		569	51	1,070	1,815
Destination	1		407	16	557	981
	152		1,250	329	2,125	3,856
US Rail / Short Line						
Origin						
Enroute	2			68		70
Destination				72	7	79
	2			140	7	149

Change in Daily Loads on Wheels By Pipeline Location - Prior 24 Hours

	E Canada	Prince Rupert	Thunder Bay	USA/MEX	Vancouver	Total
CN						
Origin	-26	-42	-61	-18	-76	-223
Enroute	32	-20	159	15	-64	122
Destination	-3	80		-2	-388	-313
	3	18	98	-5	-528	-414
CP						
Origin	-2		-113	-2	-135	-252
Enroute	2		61	-6	23	80
Destination	0		82	7	83	172
	0		30	-1	-29	0
US Rail / Short Line						
Origin						
Enroute	0			3		3
Destination				0	4	4
	0			3	4	7

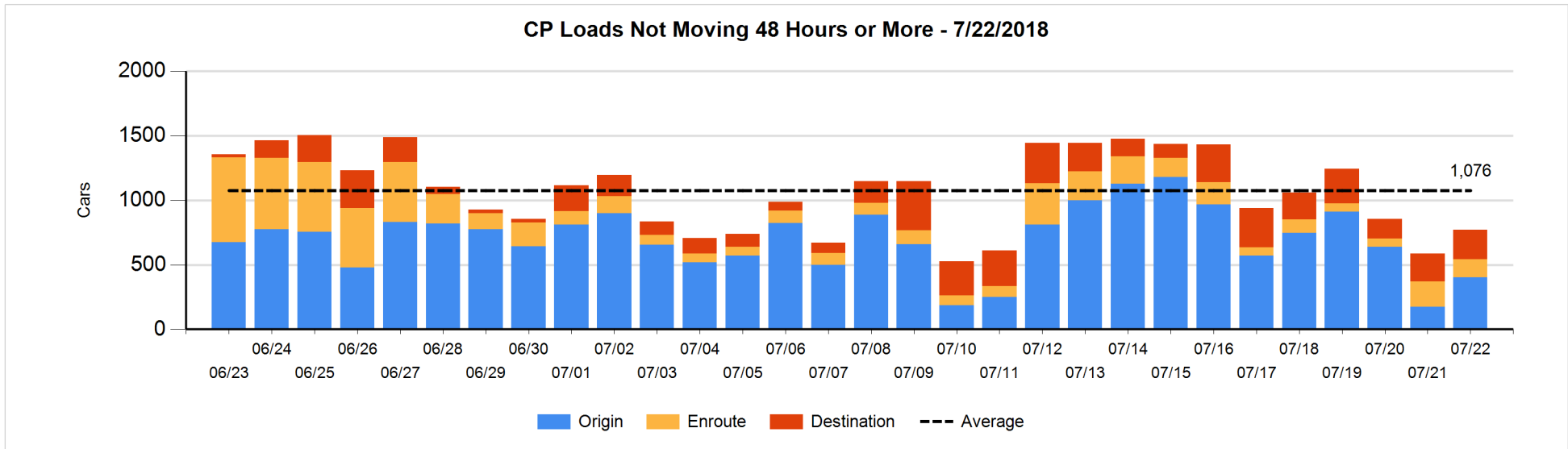
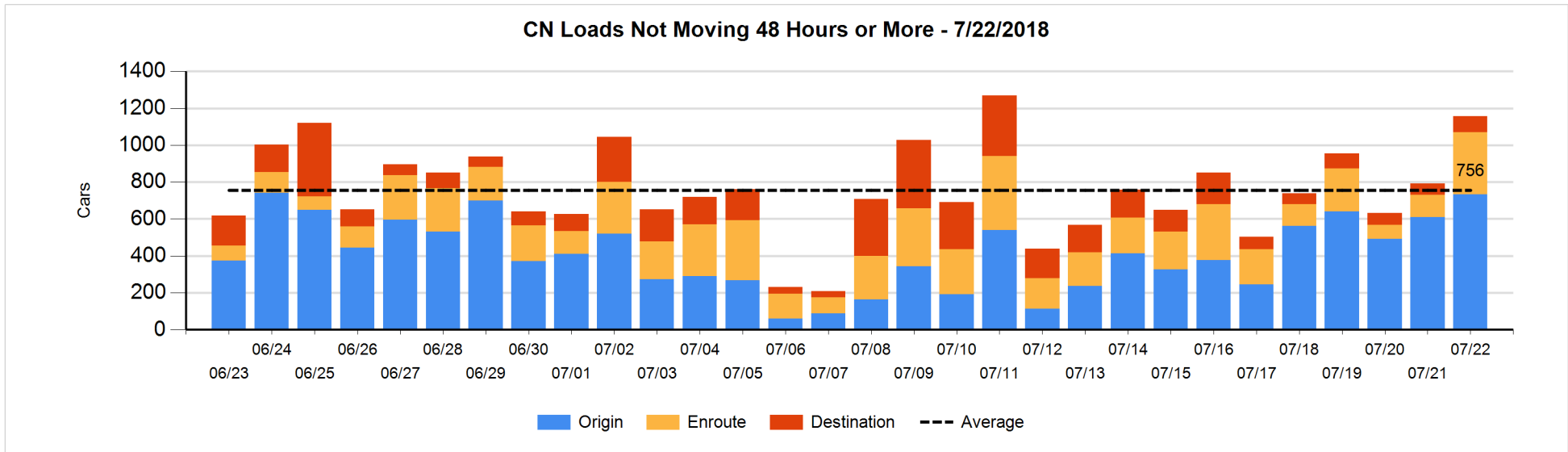


Loads Not Moving 48 Hours or More - 7/22/2018

	E Canada	Prince Rupert	Thunder Bay	USA/MEX	Vancouver	Total
CN						
Origin		100	49	88	495	732
Enroute	13	52	50	4	219	338
Destination	47			7	33	87
	60	152	99	99	747	1157
CP						
Origin	26			162	216	404
Enroute	4		7	22	107	140
Destination	1		107	9	108	225
	31		114	193	431	769
US Rail / Short Line						
Origin						
Enroute	2			34		36
Destination				53	2	55
	2			87	2	91

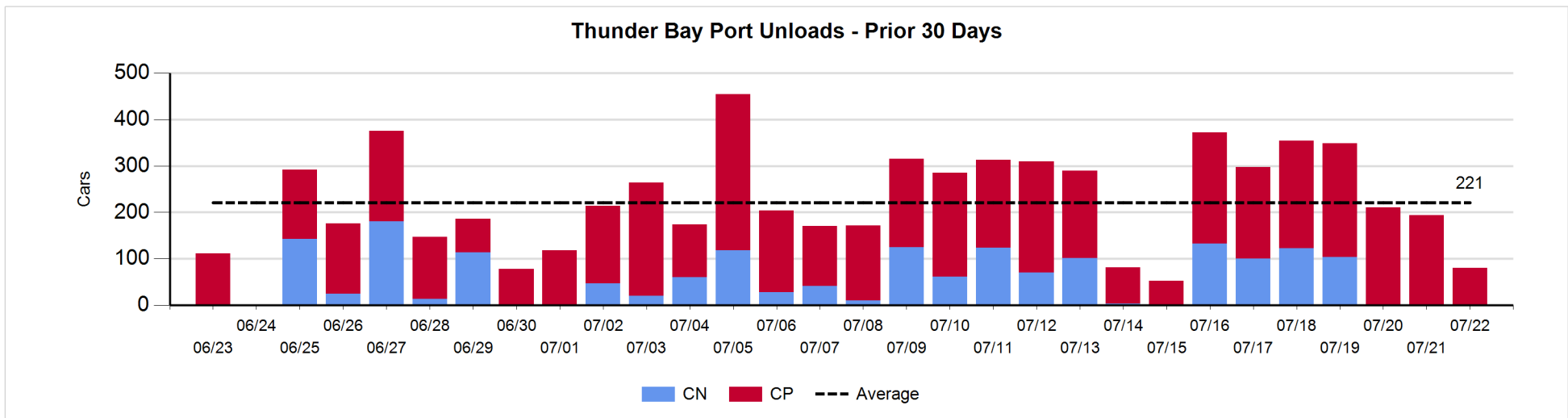
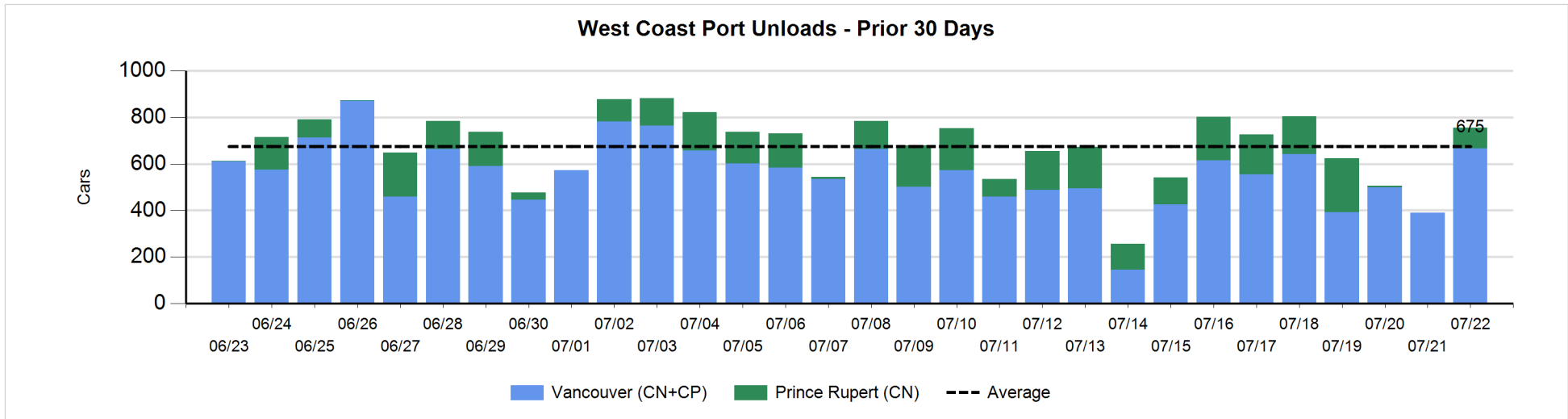
Change in Loads Not Moving 48 Hours or More - 7/22/2018

	E Canada	Prince Rupert	Thunder Bay	USA/MEX	Vancouver	Total
CN						
Origin	-26	100	-21	75	-5	123
Enroute	-28	34	0	0	212	218
Destination	-3			3	23	23
	-57	134	-21	78	230	364
CP						
Origin	25			132	72	229
Enroute	-46		-24	1	14	-55
Destination	0		12	0	-3	9
	-21		-12	133	83	183
US Rail / Short Line						
Origin						
Enroute	0			2		2
Destination				6	1	7
	0			8	1	9



Port Unloads - 7/22/2018

	Prince Rupert	Vancouver	West Coast Total	Thunder Bay	Total
CN	88	393	481		481
CP		274	274	80	354
	88	667	755	80	835



Port Terminal Status

Vancouver

Daily Activity for 7/22/2018

	Cars Arrived	Cars Received in Interchange	Cars Delivered in Interchange	Cars Placed for Unloading	Loads on Wheels at Destination As of 7/22/2018
CN	23	120	148	215	302
CP	344	144	120	231	557
SRY		4		1	7

Port Unloads

	07/22	07/21	Week To Date	Last Week
CN	393	150	2,299	2,576
CP	274	240	1,459	511
SRY			44	58

Age Profile of Loaded Cars Waiting Placement for Unloading

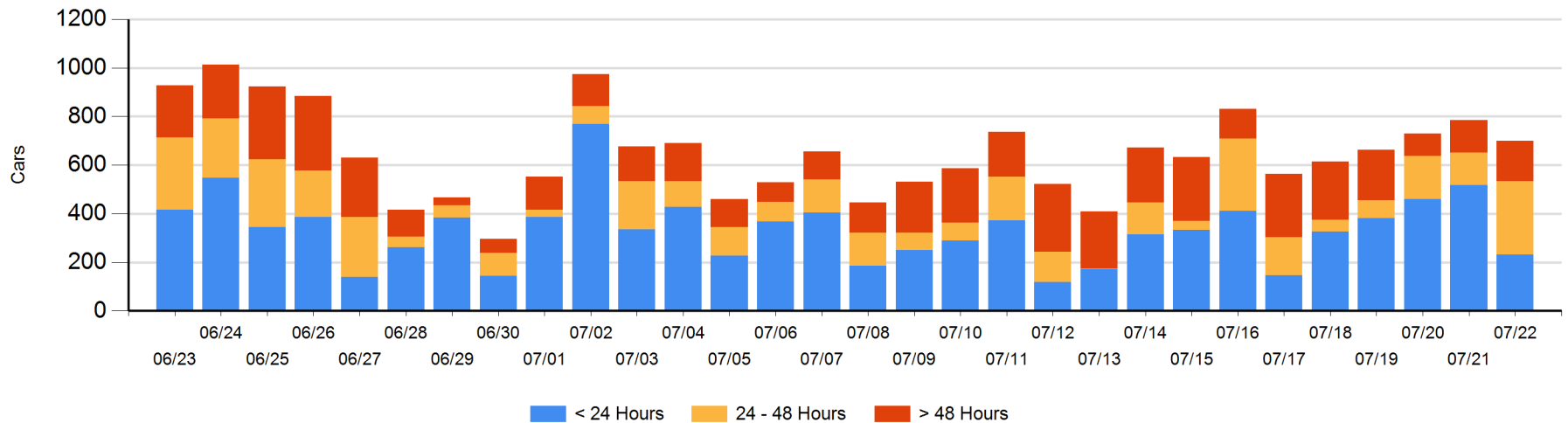
Today

	< 24 Hrs	24 - 48 Hrs	> 48-72 Hrs	> 72 Hrs	Total On Hand
CN	23	240	74	28	365
CP	209	62	39	22	332
SRY					0

Change in Last 24 Hours

	< 24 Hrs	24-48 Hrs	48 - 72 Hrs	> 72 Hrs
CN	-372	166	69	4
CP	87	2	-43	1
SRY		-1		

Loaded Cars on Hand Vancouver Waiting for Placement - Last 30 Days All Railways



Port Terminal Status

Prince Rupert

Daily Activity for 7/22/2018

	Cars Arrived	Cars Received in Interchange	Cars Delivered in Interchange	Cars Placed for Unloading	Loads on Wheels at Destination As of 7/22/2018
CN	168			168	221

Port Unloads

	07/22	07/21	Week To Date	Last Week
CN	88		848	1,004

Age Profile of Loaded Cars Waiting Placement for Unloading

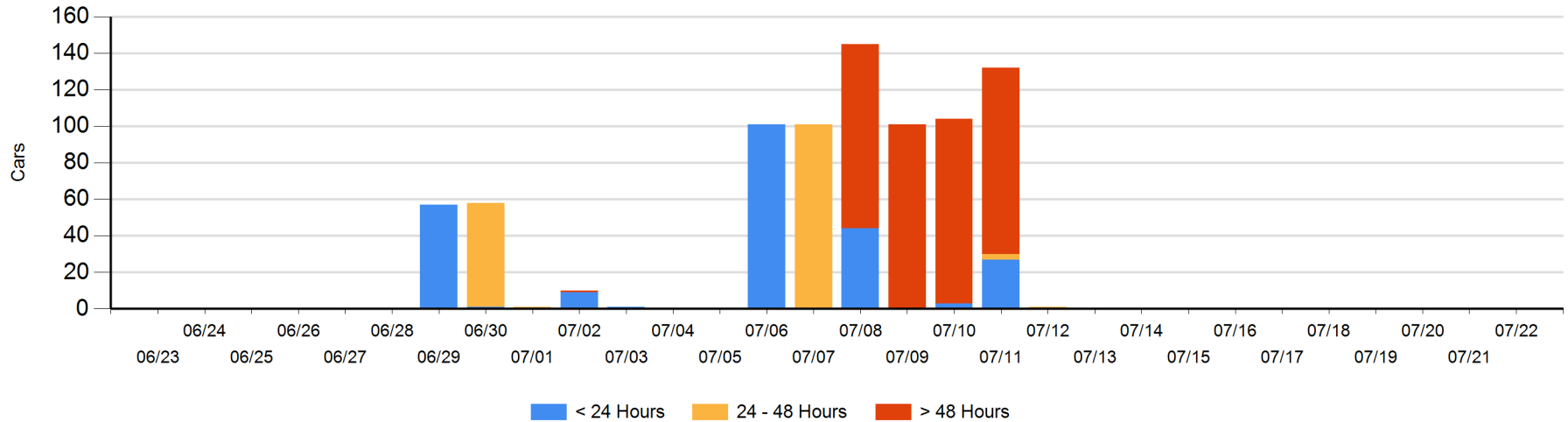
Today

	< 24 Hrs	24 - 48 Hrs	> 48-72 Hrs	> 72 Hrs	Total On Hand
CN					0

Change in Last 24 Hours

	< 24 Hrs	24-48 Hrs	48 - 72 Hrs	> 72 Hrs
CN				

Loaded Cars on Hand Prince Rupert Waiting for Placement - Last 30 Days All Railways



Port Terminal Status

Thunder Bay

Daily Activity for 7/22/2018

	Cars Arrived	Cars Received in Interchange	Cars Delivered in Interchange	Cars Placed for Unloading	Loads on Wheels at Destination As of 7/22/2018
CN					
CP	162			267	407

Port Unloads

	07/22	07/21	Week To Date	Last Week
CN			460	485
CP	80	194	1,397	1,162

Age Profile of Loaded Cars Waiting Placement for Unloading

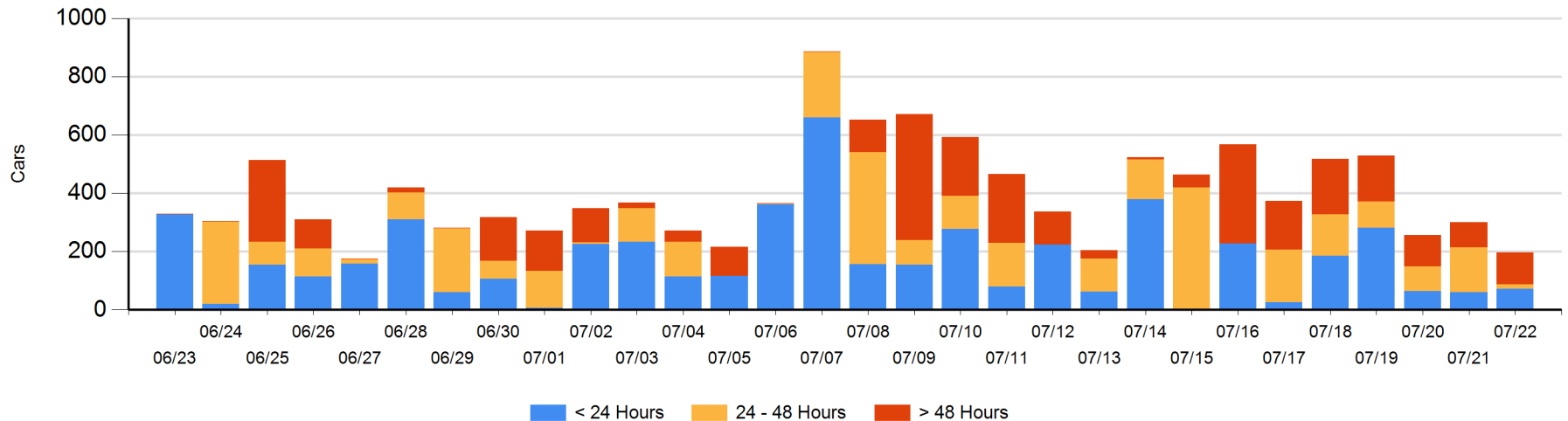
Today

	< 24 Hrs	24 - 48 Hrs	> 48-72 Hrs	> 72 Hrs	Total On Hand
CN					0
CP	72	15	76	33	196

Change in Last 24 Hours

	< 24 Hrs	24-48 Hrs	48 - 72 Hrs	> 72 Hrs
CN				
CP	12	-140	-7	30

Loaded Cars on Hand Thunder Bay Waiting for Placement - Last 30 Days All Railways



Measurement Definitions

Loads on Wheels	<p>Count of loaded rail cars including all rail cars that have been released loaded at origin and have not been reported by the railway as unloaded at destination.</p> <p>Counts include all rail cars (hopper cars and boxcars) moving within a pipeline.</p>
Loads Not Moving	<p>Loaded rail cars for which the railways have not reported a movement event for 48 hours or more whether the rail car is at origin, enroute or at destination.</p>
Port Unloads	<p>Count of rail cars reported by railways as unloaded at the western port destinations of Vancouver, Prince Rupert and Thunder Bay.</p> <p>Unload counts include all rail cars (hopper cars and boxcars) unloaded by all receivers including major port terminals, transloaders and other receivers.</p>
Cars Arrived	<p>Count of rail cars reported as arrived at the destination railway terminal.</p>
Cars Received in Interchange	<p>Count of rail cars received in interchange by each railway within a destination railway terminal. Interchange activity is tracked for the Vancouver and Thunder Bay pipelines as applicable.</p>
Cars Delivered in Interchange	<p>Count of rail cars delivered in interchange by each railway within a destination railway terminal. Interchange activity is tracked for the Vancouver and Thunder Bay pipelines as applicable.</p>
Cars Placed for Unloading	<p>Count of rail cars reported by the railways as placed loaded at the receiver's facility for unloading.</p>
Loads on Wheels at Destination	<p>Count of rail cars that remain under load within the destination railway terminal including rail cars that have been reported as placed for unloading but not yet reported as unloaded.</p>
Waiting Placement for Unloading	<p>Count of rail cars that have been reported as arrived at the destination railway terminal but not reported as placed for unloading by the railway.</p> <p>For the Ports of Vancouver, Prince Rupert and Thunder Bay the count of rail cars waiting placement for unloading is categorized by age – i.e. the elapsed time from arrival at destination to the current report date.</p>