

**Note to Reader**

Prince Rupert unloads have been lower than normal for a number of weeks as a result of ongoing maintenance at the terminal which is reducing unload capacity. Over the prior 3 weeks unloads have averaged approximately 900 unloads per week in line with the expected levels given the reduced capacity.

**SPEED READ**

- Loads on wheels declined overnight for the second consecutive day reflecting a slight increase on CN and a decline on CP. The overall downturn in volumes is attributable lower volumes in the Vancouver and Thunder Bay corridors.
- The count of loads on wheels is expected to continue to rise in the coming days most notably on CP where shipper orders last week and this week combined totaled more than 9,300 as compared to less than 7,000 on CN for the same time period. The rise in Thunder Bay volumes is expected to continue with orders over the last two weeks (44/45) totaling more than 3,800 for the two railways combined. Prince Rupert volumes should also increase to some extent with week 45 orders coming in above 700 as compared to an average of just over 500 for the prior two weeks.
- Network fluidity improved on both railways with the most significant improvement seen on CN. Idle car counts remain above 1,400 cars with CP accounting for 75% of the total.
- Week 45 unloads are off to a somewhat sluggish start beginning the week some 250 unloads behind last week's pace. This is a reflection of effectively no unloads at Prince Rupert for the third consecutive day and lower unloads at Vancouver offset by slightly higher unloads at Thunder Bay where unloads exceeded 350 cars yesterday. Prince Rupert's pipeline remains thin although there are currently 200 cars west of Prince George. The timeliness of the movement of these cars enroute to Prince Rupert will dictate the level of unloads in the coming days.
- The Thunder Bay pipeline remains robust with more than 600 cars on site and 200 more inbound currently east of Winnipeg. Assuming no terminal issues the Port is positioned to continue to see strong unloads in the coming days.

=====

**Loads on Wheels**

- Loads on wheels declined slightly overnight for the second consecutive day - now at 7,718 and 13% below the trailing 30 day average
- The reduction in loads on wheels reflects a nominal increase on CN and lower volumes on CP.
- On a net basis the decline in loads on wheels reflects lower volumes in the Vancouver (-141) and Thunder Bay (-244) corridors.
- CN volumes increased slightly reflecting an increase in Vancouver traffic offset by a decline in the Thunder Bay corridor. System wide CN loads on wheels now at 3,478 - 18% below the trailing 30 day average.
- CP volumes declined 6% overnight reflecting declines in both the Vancouver and Thunder Bay corridors offset by increases in other corridors. CP system wide loads on wheels now at 3,900 - 10% below the trailing 30 day average.
- Vancouver now at 4,532 - 16% below the trailing 30 day average.
- The Prince Rupert pipeline currently sits at 648 - up nominally overnight and 27% below the trailing 30 day average.
- Thunder Bay volumes declined for the first time in six days - remains above 1,100 and in line with the trailing 30 day average - with 60% of traffic currently on CP.

**Hopper Car Rationing**

- No hopper car rationing has been reported for either CN or CP in week 43.

**Loads Not Moving**

- **The count of cars not moving for 48+ hours declined for the first time in three days dropping 29% (587 cars) overnight reflecting declines on both railways led by CN. The count of idle cars now stands at 1,410.**
- CN
  - **The count of idle cars fell by 56% (447 cars) - idle car counts now at 350.**
  - The number of cars idle for 4+ days up 50% overnight - now at 150 cars.
  - The count of cars not moving for 7+ days up slightly overnight - remains below 100 cars.
  - Vancouver represents only 30% of all idle cars.
- CP
  - **CP counts declined 12% (140 cars) overnight. The count of idle cars on CP now at 1,060.**
  - The number of cars idle for 4+ days nearly doubled overnight - now above 500 cars.
  - The count of cars idle for 7+ days unchanged overnight - remains below 50 cars (\* number of idle cars for 7+ days reported yesterday restated due to late reporting of data).
  - Vancouver continues to account for the majority of all idle cars (61%).
  - In total 60% of all idle cars are dwelling at origin locations.

### **Port Performance**

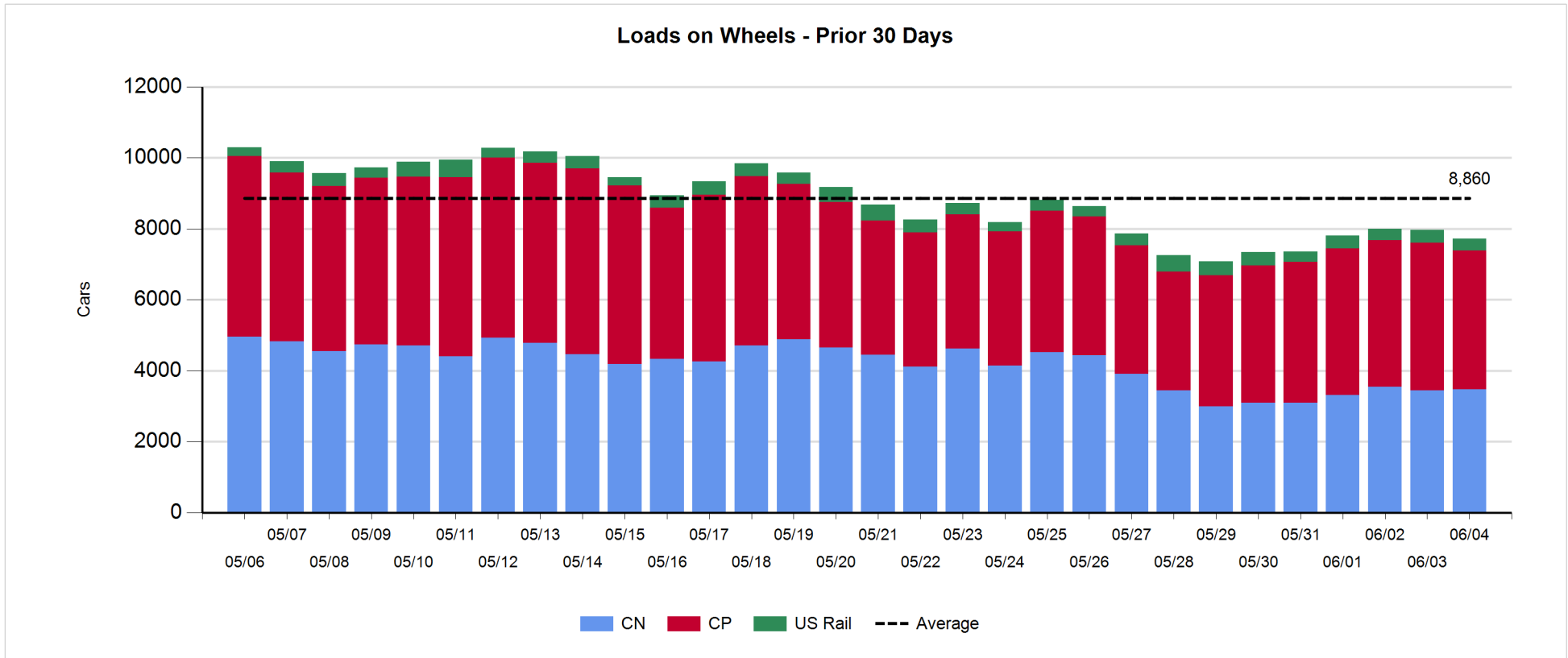
- CN and CP reported a total of 895 cars unloaded at the three western ports. Week 45 unloads begin the week some 250 unloads behind last week's pace reflecting lower unloads at Prince Rupert and Vancouver offset by slightly higher unloads at Thunder Bay.
- Vancouver
  - 528 cars reported unloaded by CN and CP at the Port of Vancouver; CN - 284 and CP - 244.
  - There are 500+ cars on hand at Vancouver waiting placement for unloading with 600+ cars arriving at the port in the last 24 hours.
  - CN and CP have 1,200+ cars enroute to Vancouver west of Alberta - only 350 Kamloops and west - with 75% of traffic currently moving on CP.
- Prince Rupert
  - Only 1 car reported unloaded at Prince Rupert resulting in week 45 unloads lagging last week by more than 100 unloads one day in.
  - Loads on wheels at 648 - the highest in a week.
  - There are 200 cars west of Jasper - all Prince George and west.
  - With few cars on site and given the location of inbound cars - the timely movement of inbound cars will determine unloads in the coming days.
- Thunder Bay
  - 366 unloads reported at Thunder Bay - above 300 unloads for the first time in a week. Week 45 unloads slightly ahead of last week's pace one day in.
  - There are 500 cars on site at Thunder Bay with 200+ cars arriving at the Port in the prior 24 hours.
  - There are now 300+ cars enroute to Thunder Bay - 200 Winnipeg and east. Given the number of cars on hand and the proximity of inbound cars the Port is positioned for continued strong unloads in the coming days.

**Daily Loads on Wheels - 6/4/2018**

	E Canada	Prince Rupert	Thunder Bay	USA/MEX	Vancouver	Total
CN	345	648	418	93	1,974	3,478
CP	182		731	445	2,542	3,900
Short Line	13				16	29
US Rail				311		311
	540	648	1,149	849	4,532	7,718

**Change in Loads on Wheels - Prior 24 Hours**

	E Canada	Prince Rupert	Thunder Bay	USA/MEX	Vancouver	Total
CN	29	35	-143	1	114	36
CP	51		-101	49	-253	-254
Short Line	-7				-2	-9
US Rail				-15		-15
	73	35	-244	35	-141	-242

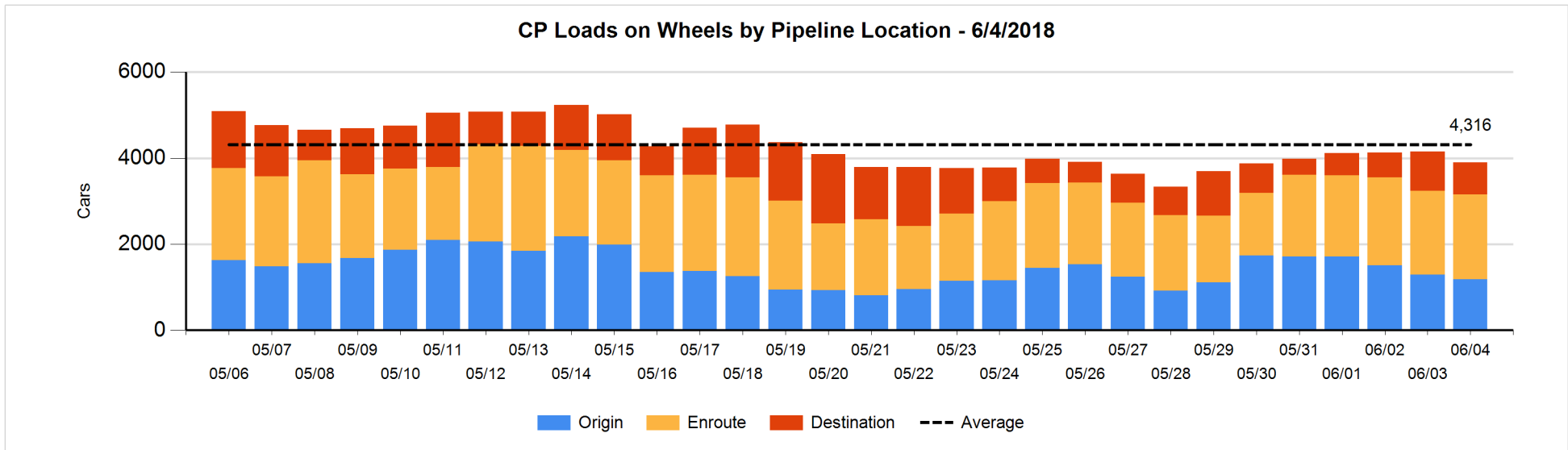
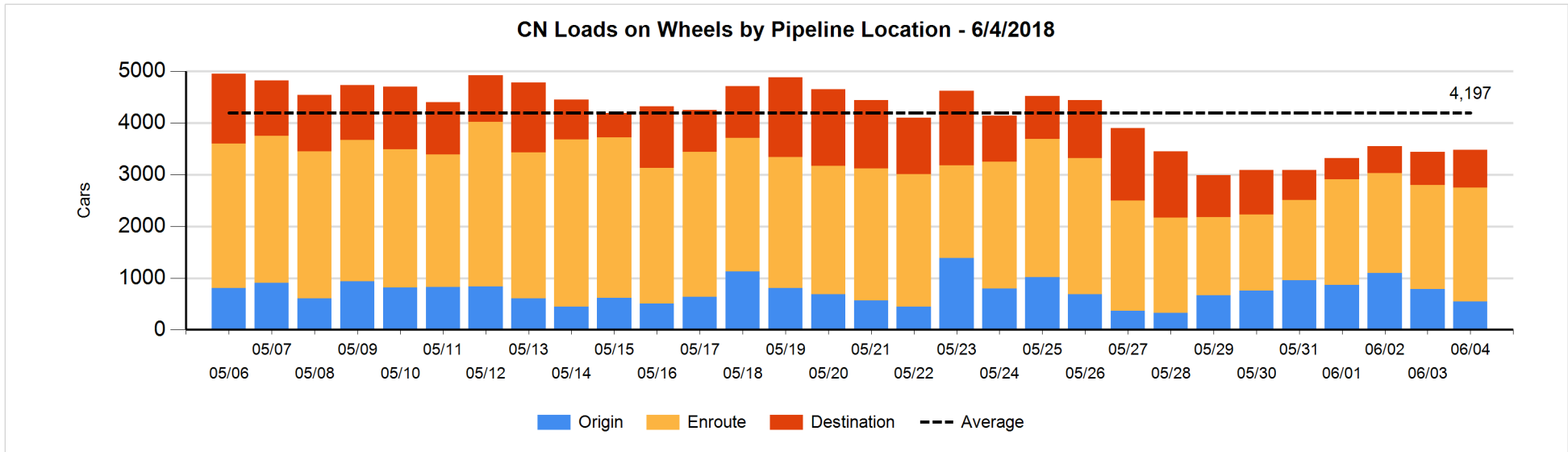


**Daily Loads on Wheels By Pipeline Location - 6/4/2018**

	E Canada	Prince Rupert	Thunder Bay	USA/MEX	Vancouver	Total
CN						
Origin	76	102	113	10	243	544
Enroute	237	524	128	72	1,244	2,205
Destination	32	22	177	11	487	729
	345	648	418	93	1,974	3,478
CP						
Origin	107		177	192	705	1,181
Enroute	75		185	243	1,471	1,974
Destination			369	10	366	745
	182		731	445	2,542	3,900
US Rail / Short Line						
Origin						
Enroute	10			203		213
Destination	3			108	16	127
	13			311	16	340

**Change in Daily Loads on Wheels By Pipeline Location - Prior 24 Hours**

	E Canada	Prince Rupert	Thunder Bay	USA/MEX	Vancouver	Total
CN						
Origin	28	-62	-105	-4	-101	-244
Enroute	-5	76	-20	6	137	194
Destination	6	21	-18	-1	78	86
	29	35	-143	1	114	36
CP						
Origin	51		10	61	-230	-108
Enroute	0		22	24	-26	20
Destination			-133	-36	3	-166
	51		-101	49	-253	-254
US Rail / Short Line						
Origin	-5					-5
Enroute	5			-28		-23
Destination	-7			13	-2	4
	-7			-15	-2	-24

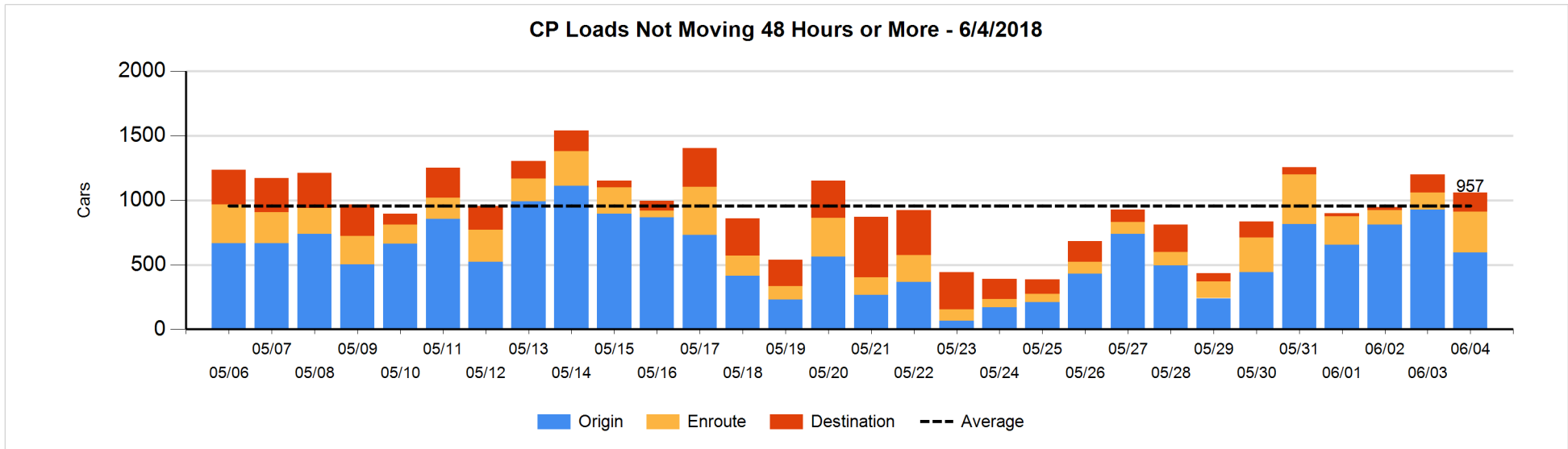
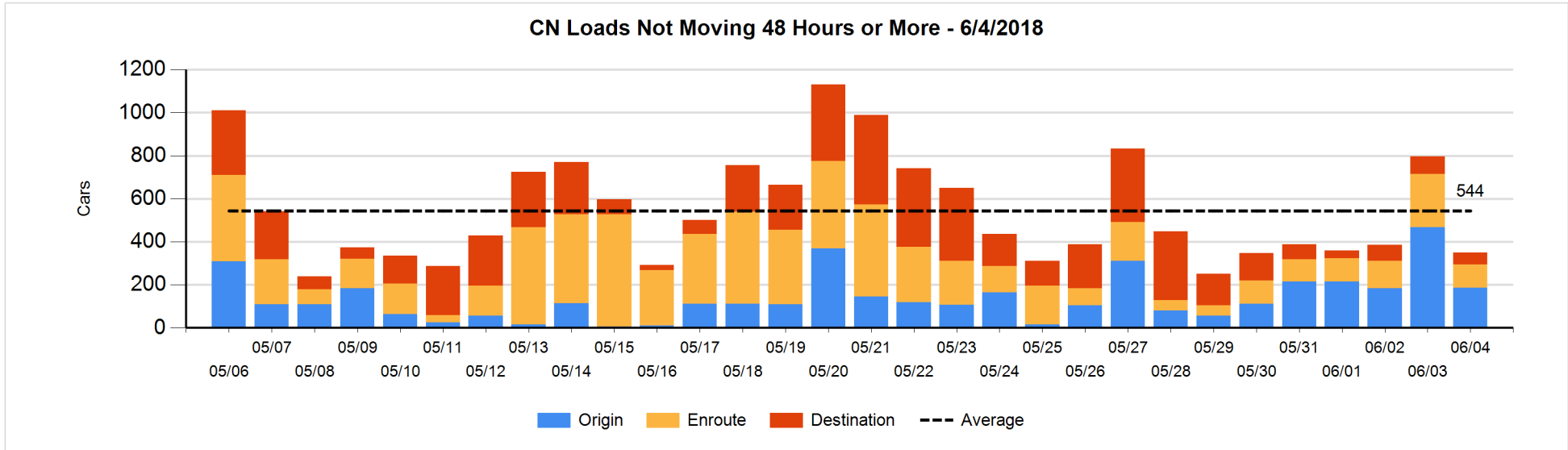


**Loads Not Moving 48 Hours or More - 6/4/2018**

	E Canada	Prince Rupert	Thunder Bay	USA/MEX	Vancouver	Total
<b>CN</b>						
Origin	25	66	25	7	62	185
Enroute	71	12		6	21	110
Destination	5		19	10	21	55
	101	78	44	23	104	350
<b>CP</b>						
Origin	56		55	106	376	593
Enroute	58		17	22	221	318
Destination			123	9	17	149
	114		195	137	614	1060
<b>US Rail / Short Line</b>						
Origin						
Enroute	5			34		39
Destination				47	6	53
	5			81	6	92

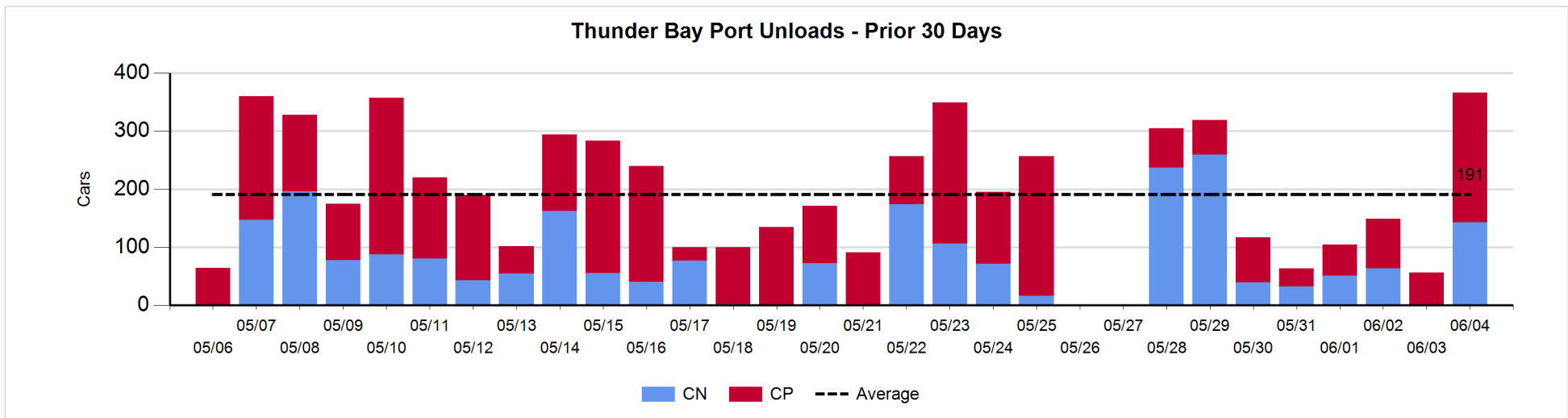
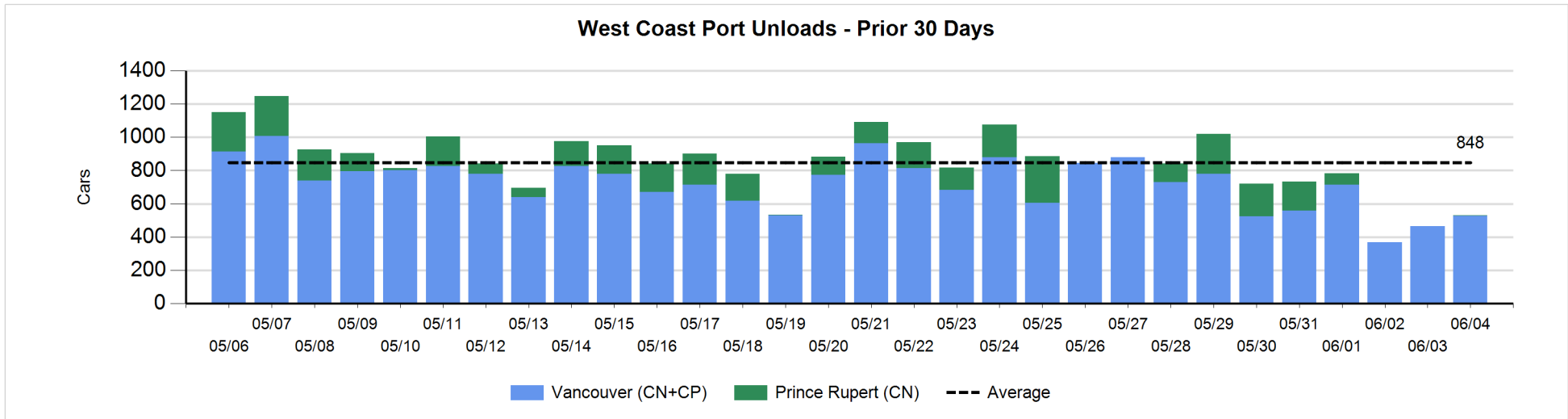
**Change in Loads Not Moving 48 Hours or More - 6/4/2018**

	E Canada	Prince Rupert	Thunder Bay	USA/MEX	Vancouver	Total
<b>CN</b>						
Origin	-23	-98	0	-7	-155	-283
Enroute	-12	1		0	-127	-138
Destination	-12	-1	17	-1	-29	-26
	-47	-98	17	-8	-311	-447
<b>CP</b>						
Origin	0		0	0	-334	-334
Enroute	52		-43	-5	182	186
Destination			14	-2	-4	8
	52		-29	-7	-156	-140
<b>US Rail / Short Line</b>						
Origin	-5					-5
Enroute	0			3		3
Destination	-8			-17	0	-25
	-13			-14	0	-27



**Port Unloads - 6/4/2018**

	Prince Rupert	Vancouver	West Coast Total	Thunder Bay	Total
CN	1	284	285	143	428
CP		244	244	223	467
	1	528	529	366	895





**Port Terminal Status**

**Vancouver**

Daily Activity for 6/4/2018

	Cars Arrived	Cars Received in Interchange	Cars Delivered in Interchange	Cars Placed for Unloading	Loads on Wheels at Destination As of 6/4/2018
CN	273	339	65	353	487
CP	351	65	340	257	366
SRY	2	1		2	16

**Port Unloads**

	06/04	06/03	Week To Date	Last Week
CN	284	170	284	1,997
CP	244	295	244	2,142
SRY	10	2	10	44

**Age Profile of Loaded Cars Waiting Placement for Unloading**

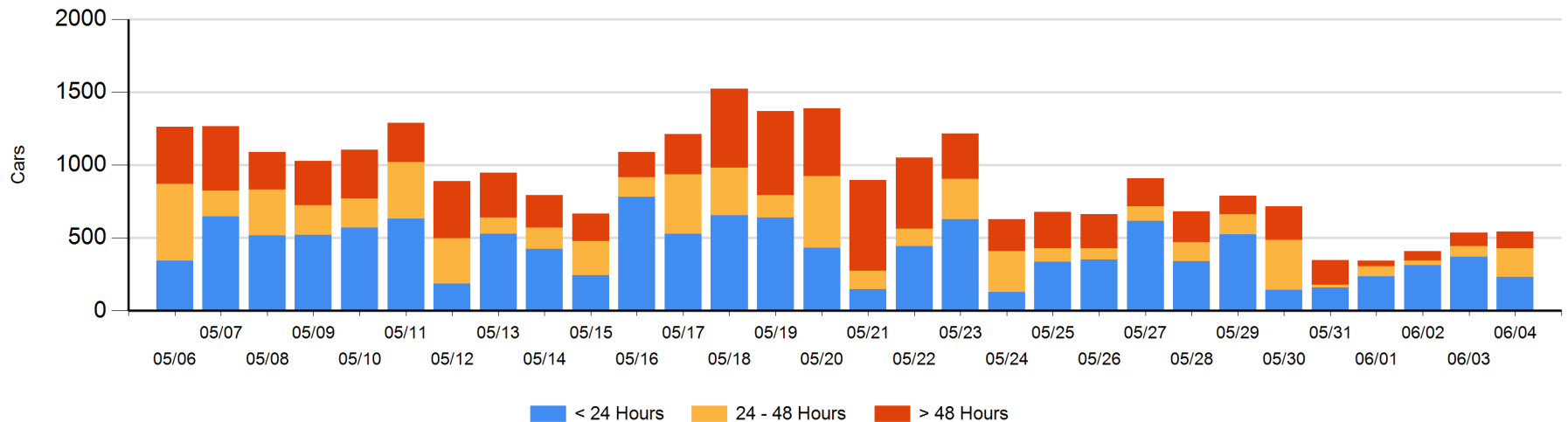
**Today**

	< 24 Hrs	24 - 48 Hrs	> 48-72 Hrs	> 72 Hrs	Total On Hand
CN	146	120	27	48	341
CP	87	76	8	31	202
SRY					0

**Change in Last 24 Hours**

	< 24 Hrs	24-48 Hrs	48 - 72 Hrs	> 72 Hrs
CN	-11	83	25	-8
CP	-127	40	-17	24
SRY				

**Loaded Cars on Hand Vancouver Waiting for Placement - Last 30 Days All Railways**



**Port Terminal Status**

**Prince Rupert**

Daily Activity for 6/4/2018

	Cars Arrived	Cars Received in Interchange	Cars Delivered in Interchange	Cars Placed for Unloading	Loads on Wheels at Destination As of 6/4/2018
CN	22			21	22

**Port Unloads**

	06/04	06/03	Week To Date	Last Week
CN	1		1	788

**Age Profile of Loaded Cars Waiting Placement for Unloading**

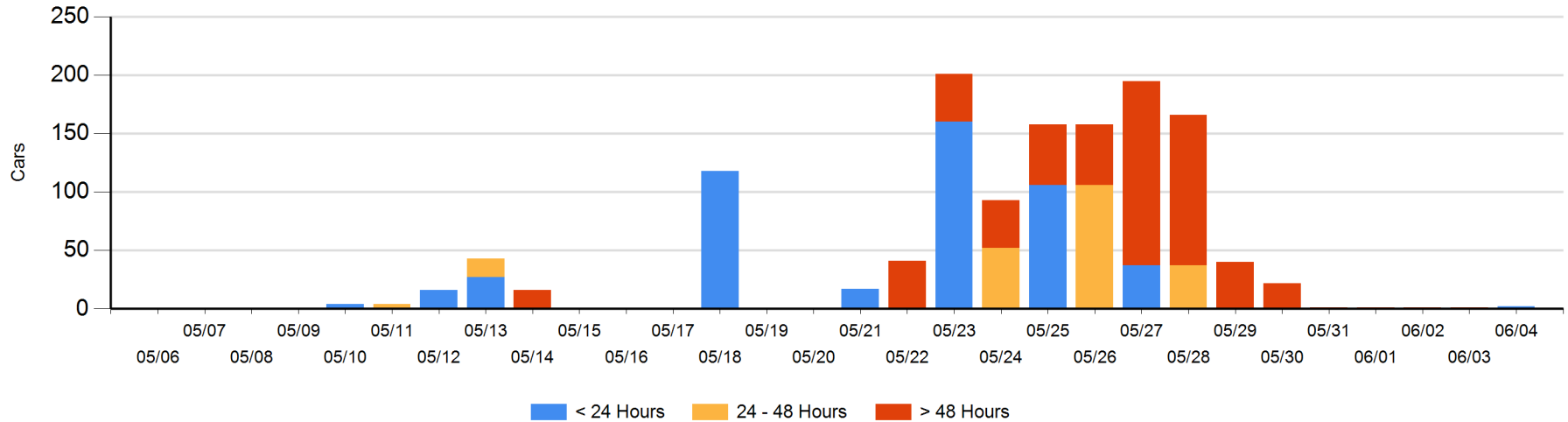
**Today**

	< 24 Hrs	24 - 48 Hrs	> 48-72 Hrs	> 72 Hrs	Total On Hand
CN	2				2

**Change in Last 24 Hours**

	< 24 Hrs	24-48 Hrs	48 - 72 Hrs	> 72 Hrs
CN	2			-1

Loaded Cars on Hand Prince Rupert Waiting for Placement - Last 30 Days All Railways



**Port Terminal Status**

**Thunder Bay**

Daily Activity for 6/4/2018

	Cars Arrived	Cars Received in Interchange	Cars Delivered in Interchange	Cars Placed for Unloading	Loads on Wheels at Destination As of 6/4/2018
CN	125			113	177
CP	90			114	369

**Port Unloads**

	06/04	06/03	Week To Date	Last Week
CN	143		143	681
CP	223	56	223	432

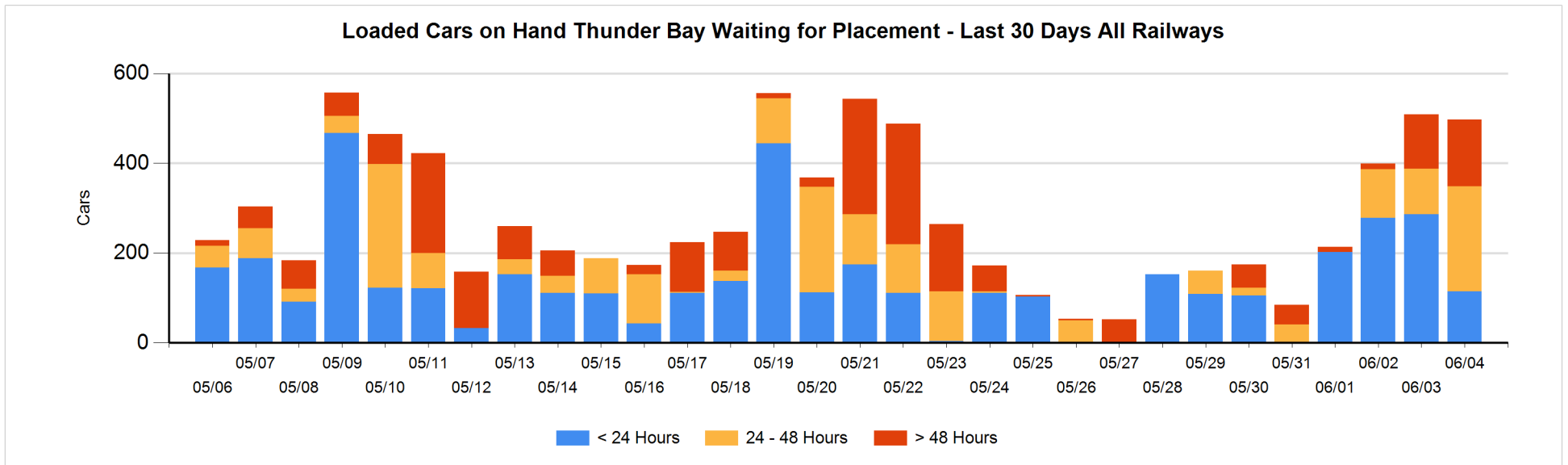
**Age Profile of Loaded Cars Waiting Placement for Unloading**

**Today**

	< 24 Hrs	24 - 48 Hrs	> 48-72 Hrs	> 72 Hrs	Total On Hand
CN	25	78	17		120
CP	90	156	79	52	377

**Change in Last 24 Hours**

	< 24 Hrs	24-48 Hrs	48 - 72 Hrs	> 72 Hrs
CN	-53	60	17	-12
CP	-118	72	-30	52



## Measurement Definitions

Loads on Wheels	<p>Count of loaded rail cars including all rail cars that have been released loaded at origin and have not been reported by the railway as unloaded at destination.</p> <p>Counts include all rail cars (hopper cars and boxcars) moving within a pipeline.</p>
Loads Not Moving	<p>Loaded rail cars for which the railways have not reported a movement event for 48 hours or more whether the rail car is at origin, enroute or at destination.</p>
Port Unloads	<p>Count of rail cars reported by railways as unloaded at the western port destinations of Vancouver, Prince Rupert and Thunder Bay.</p> <p>Unload counts include all rail cars (hopper cars and boxcars) unloaded by all receivers including major port terminals, transloaders and other receivers.</p>
Cars Arrived	<p>Count of rail cars reported as arrived at the destination railway terminal.</p>
Cars Received in Interchange	<p>Count of rail cars received in interchange by each railway within a destination railway terminal. Interchange activity is tracked for the Vancouver and Thunder Bay pipelines as applicable.</p>
Cars Delivered in Interchange	<p>Count of rail cars delivered in interchange by each railway within a destination railway terminal. Interchange activity is tracked for the Vancouver and Thunder Bay pipelines as applicable.</p>
Cars Placed for Unloading	<p>Count of rail cars reported by the railways as placed loaded at the receiver's facility for unloading.</p>
Loads on Wheels at Destination	<p>Count of rail cars that remain under load within the destination railway terminal including rail cars that have been reported as placed for unloading but not yet reported as unloaded.</p>
Waiting Placement for Unloading	<p>Count of rail cars that have been reported as arrived at the destination railway terminal but not reported as placed for unloading by the railway.</p> <p>For the Ports of Vancouver, Prince Rupert and Thunder Bay the count of rail cars waiting placement for unloading is categorized by age – i.e. the elapsed time from arrival at destination to the current report date.</p>