

Note to Reader

Prince Rupert unloads continue to be lower than normal as a result of ongoing maintenance at the terminal resulting in reduced unload capacity. While unloads have averaged 770 per week over the course of the last four weeks, they have now risen above the 900 car mark for two consecutive weeks consistent with an increase in hopper car orders in this corridor which have risen above 1,000 cars in week 48 for only the second time in the last six weeks. Alliance Grain Terminal in Vancouver has now begun planned maintenance which is expected to continue until mid-August.

SPEED READ

- Loads on wheels count was largely unchanged overnight, reflecting an increase in CN volumes cancel out by lower CP volumes. On a net basis, the rise in Vancouver traffic levels was offset by reduced volumes at Prince Rupert, USA/MEX and Thunder Bay corridors.
- Network fluidity declined overnight for the fifth time in the last six days, led by a drop in both CN and CP idle car counts by 38% and 19%, respectively. The count of cars for 4+ days increased for three consecutive days - now at more than 1,100 cars.
- Week 48 unloads now ahead of the prior week's performance after three days by more than 250 unloads reflecting an improved week over week performance at Vancouver and Thunder Bay offset by lower unloads at Prince Rupert.

=====

Loads on Wheels

- Loads on wheels showed negligible change (-3) overnight. The fall displays greater traffic at CN cancel out by lower volumes at CP - currently sits at 8,959 and 9% above the trailing 30 day average.
- On a net basis, the decline in loads on wheels shows higher traffic at Vancouver corridor compensate by lower volumes at Prince Rupert, USA/MEX and Thunder Bay corridors.
- CN volumes increased marginally by 2% (+79) overnight with greater traffic levels at Vancouver corridor offset by lower traffic at Thunder Bay and Prince Rupert corridors. System wide CN loads on wheels currently sits at 4,177 and 8% above the trailing 30 day average.
- CP volumes declined slightly by 2% (-82) overnight for the second consecutive day driven by an increase at Thunder Bay corridor offset by a decline at USA/MEX and Vancouver corridors. CP system wide loads on wheels currently sits at 4,381 and 9% above the trailing 30 day average.
- Vancouver now at 5,151, rose 5% overnight and 5% above the trailing 30 day average.
- The Prince Rupert pipeline sits at 933, declined significantly by 12% overnight and 14% above the trailing 30 day average.
- Thunder Bay volumes declined 4% overnight - now at 1,410, above the 1,000 car threshold for the sixth consecutive day and 26% above the trailing 30 day average with 76% of traffic moving on CP.

Hopper Car Rationing

- No hopper car rationing has been reported for either CN or CP in week 47 and none expected in week 48.

Loads Not Moving

- **The count of cars not moving for 48+ hours rose significantly by 26% (+480) overnight, indicating greater counts from both major railways. Idle car counts now at 2,361.**
- CN
 - **The count of idle cars up significantly by 38% (+246) overnight - idle car counts now at 897.**
 - The number of cars idle for 4+ days decreased 8% overnight, marking the first day of improvement after four consecutive days of increasing counts -

- currently sits at more than 400 cars.
- The count of cars not moving for 7+ days increased significantly by 121% overnight - currently sits at just under 100 cars.
- Vancouver represents 55% of all idle cars.
- CP
 - **CP counts increased significantly by 19% (+234) overnight - idle car counts currently at 1,464.**
 - The number of cars idle for 4+ days increased significantly by 10% overnight - now at more than 700 cars, the highest level seen in the last 30 days.
 - The number of cars idle for 7+ days up 6% overnight for the second consecutive day - currently sits at more than 100 cars.
 - Vancouver accounts for 91% of all idle cars.
 - In total 55% of all idle cars are dwelling at origin locations.

Port Performance

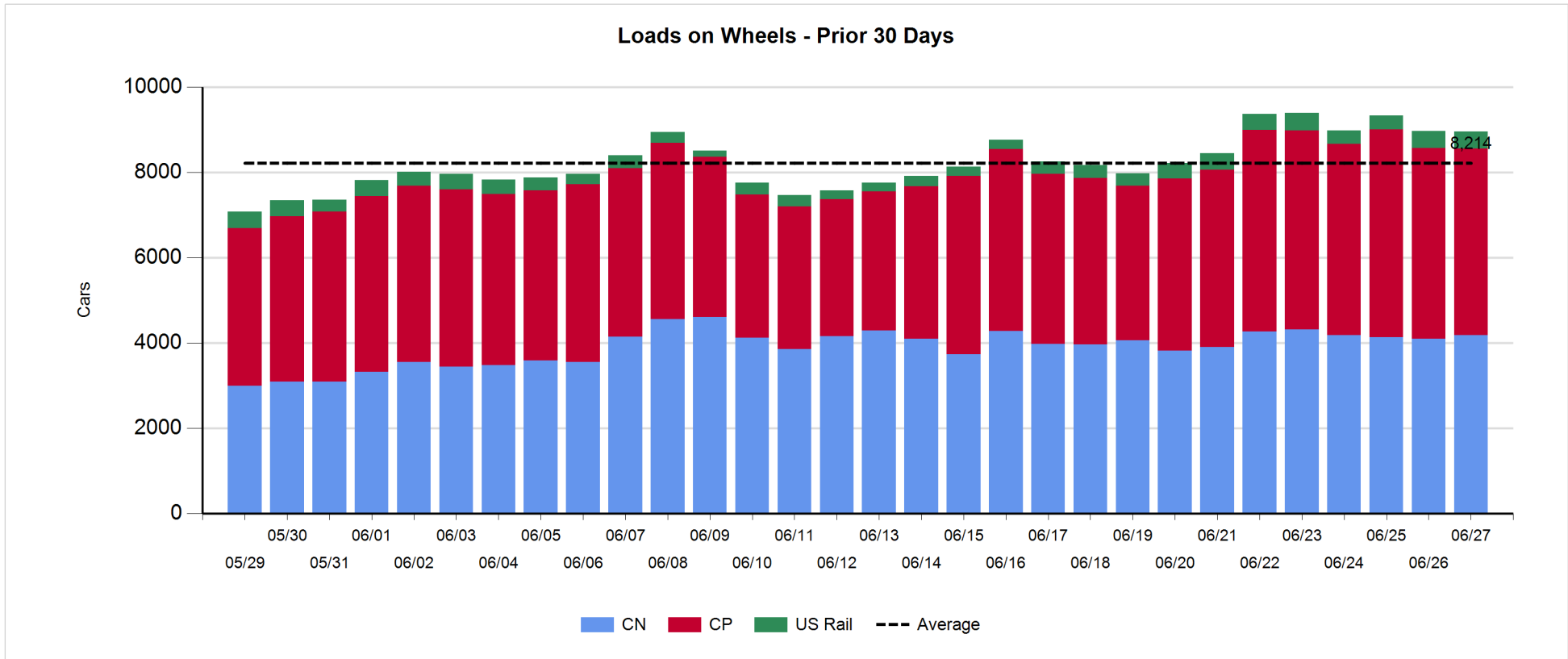
- CN and CP reported a total of 1,023 cars unloaded at the three western ports - above the 1,000 car threshold for the third consecutive day. Three days in Week 48 unloads track greater than 250 unloads ahead of last week's pace, reflecting increased unloads at Vancouver and Thunder Bay offset by lower unloads at Prince Rupert.
- Vancouver
 - 459 unloads reported by CN and CP at the Port of Vancouver; CN - 100 and CP - 359.
 - There are fewer than 650 cars on hand at Vancouver waiting placement for unloading with more than 300 cars arriving at the port in the last 24 hours.
 - CN and CP have nearly 500 cars enroute to Vancouver west of Alberta - about 200 Kamloops and west - with 65% of traffic currently moving on CP.
- Prince Rupert
 - Prince Rupert reported 189 unloads, above the 100 car threshold for the first time in Week 48 and now trail last week's unloads after three days by about 200.
 - Loads on wheels now slightly below 1,000 cars.
 - There are nearly 400 cars west of Jasper - mostly Prince George and west.
 - There are currently zero cars on site with nearly 100 cars arriving at the port in the last 24 hours. Given the structure of the pipeline, there is a chance unloads may be challenged in the next few days.
- Thunder Bay
 - 375 unloads reported at Thunder Bay yesterday. Three days in Week 48 unloads track ahead of last week's pace by more than 150 unloads.
 - There are nearly 200 cars on site at Thunder Bay with around 200 cars arriving at the port in the prior 24 hours.
 - There are more than 300 cars enroute to Thunder Bay - all Winnipeg and east. Cars on hand and those enroute should support unloads for another day or two.

Daily Loads on Wheels - 6/27/2018

	E Canada	Prince Rupert	Thunder Bay	USA/MEX	Vancouver	Total
CN	338	933	333	161	2,412	4,177
CP	92		1,077	502	2,710	4,381
Short Line	11				29	40
US Rail				361		361
	441	933	1,410	1,024	5,151	8,959

Change in Loads on Wheels - Prior 24 Hours

	E Canada	Prince Rupert	Thunder Bay	USA/MEX	Vancouver	Total
CN	44	-128	-165	-1	329	79
CP	0		107	-130	-59	-82
Short Line	-17				-5	-22
US Rail				22		22
	27	-128	-58	-109	265	-3

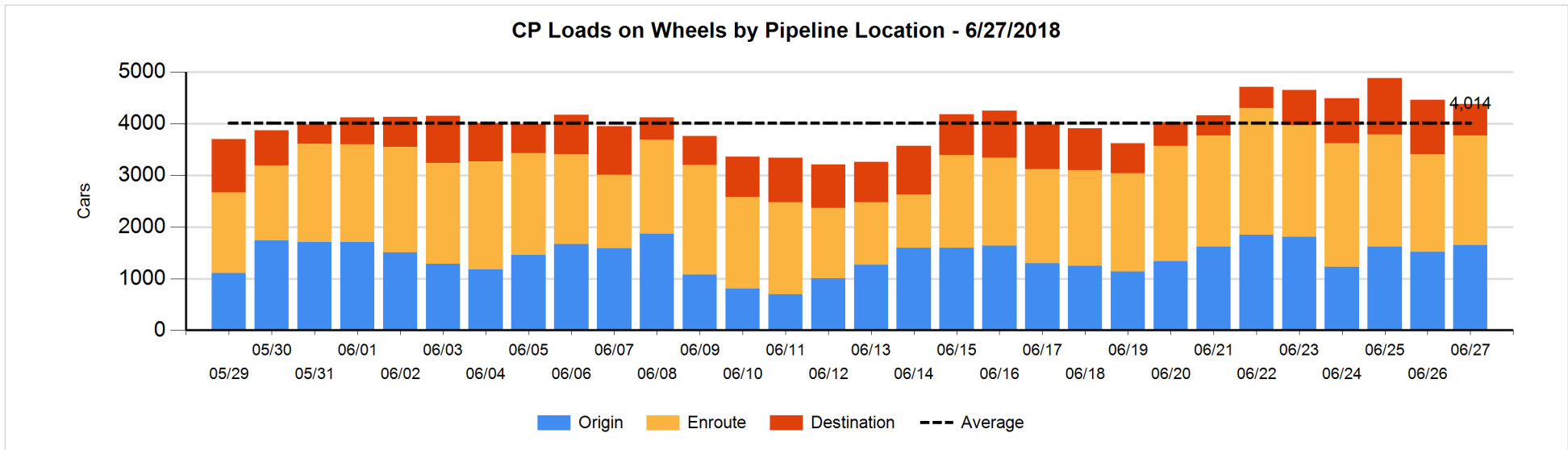
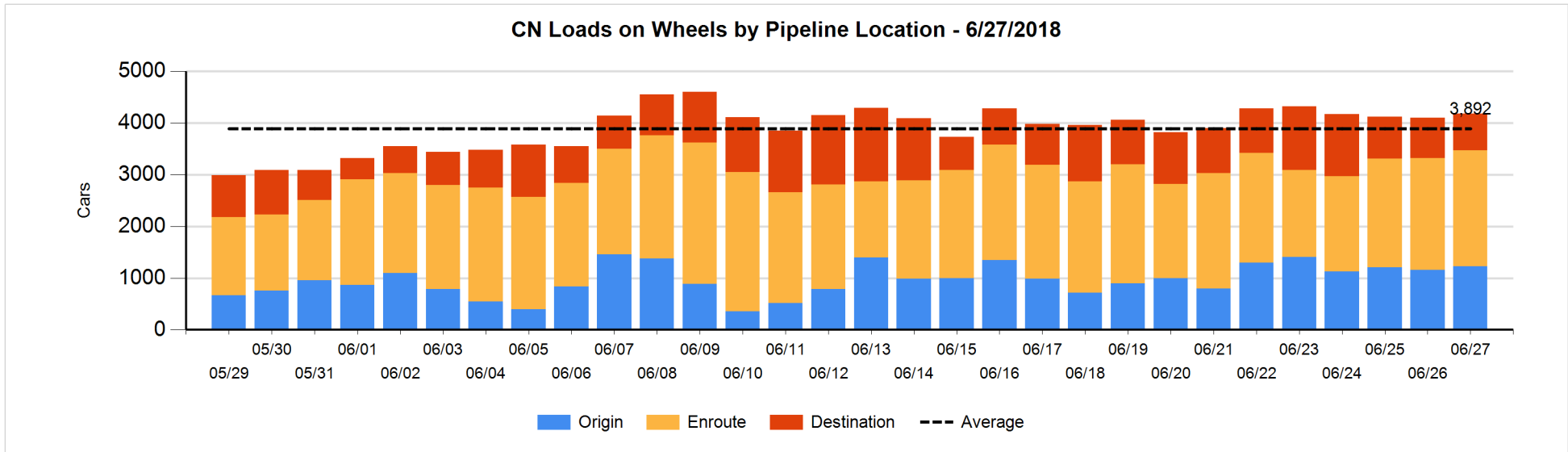


Daily Loads on Wheels By Pipeline Location - 6/27/2018

	E Canada	Prince Rupert	Thunder Bay	USA/MEX	Vancouver	Total
CN						
Origin	51	258	109	13	793	1,224
Enroute	236	596	162	145	1,103	2,242
Destination	51	79	62	3	516	711
	338	933	333	161	2,412	4,177
CP						
Origin	19		517	104	1,008	1,648
Enroute	73		352	354	1,341	2,120
Destination			208	44	361	613
	92		1,077	502	2,710	4,381
US Rail / Short Line						
Origin						
Enroute	2			242		244
Destination	9			119	29	157
	11			361	29	401

Change in Daily Loads on Wheels By Pipeline Location - Prior 24 Hours

	E Canada	Prince Rupert	Thunder Bay	USA/MEX	Vancouver	Total
CN						
Origin	0	-40	-10	6	115	71
Enroute	38	17	-76	-7	104	76
Destination	6	-105	-79	0	110	-68
	44	-128	-165	-1	329	79
CP						
Origin	-4		118	-25	40	129
Enroute	4		72	1	157	234
Destination			-83	-106	-256	-445
	0		107	-130	-59	-82
US Rail / Short Line						
Origin						
Enroute	-5			-31		-36
Destination	-12			53	-5	36
	-17			22	-5	0

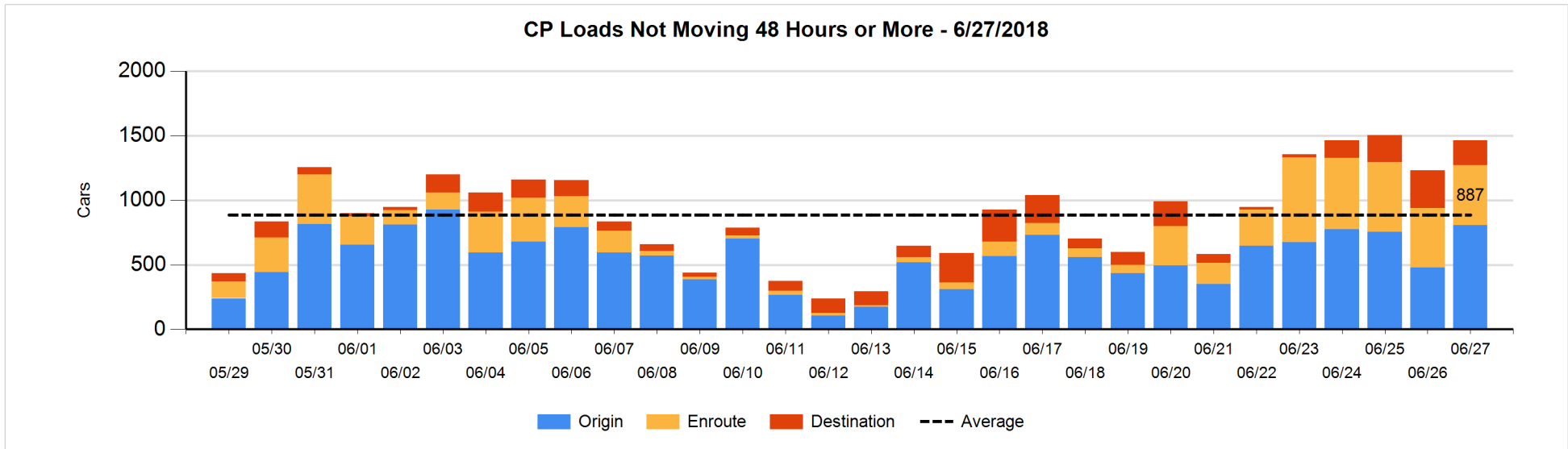
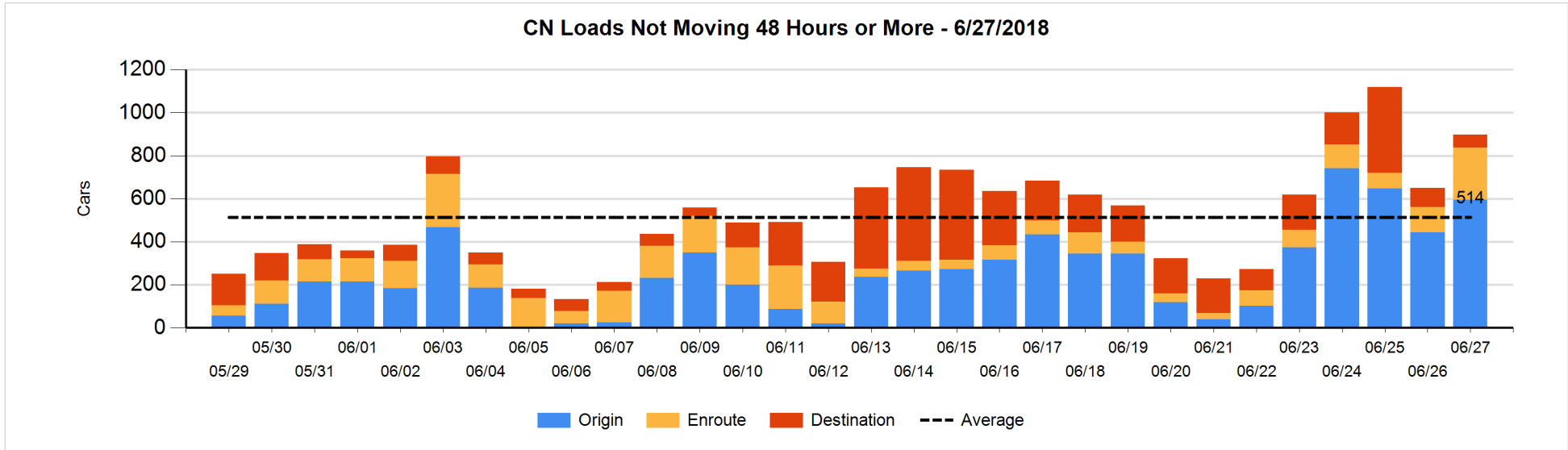


Loads Not Moving 48 Hours or More - 6/27/2018

	E Canada	Prince Rupert	Thunder Bay	USA/MEX	Vancouver	Total
CN						
Origin	25	242		7	321	595
Enroute	6	97	1	19	120	243
Destination	6		2		51	59
	37	339	3	26	492	897
CP						
Origin	19		44		742	805
Enroute	1		6	63	396	466
Destination					193	193
	20		50	63	1331	1464
US Rail / Short Line						
Origin						
Enroute	2			20		22
Destination	3			15	9	27
	5			35	9	49

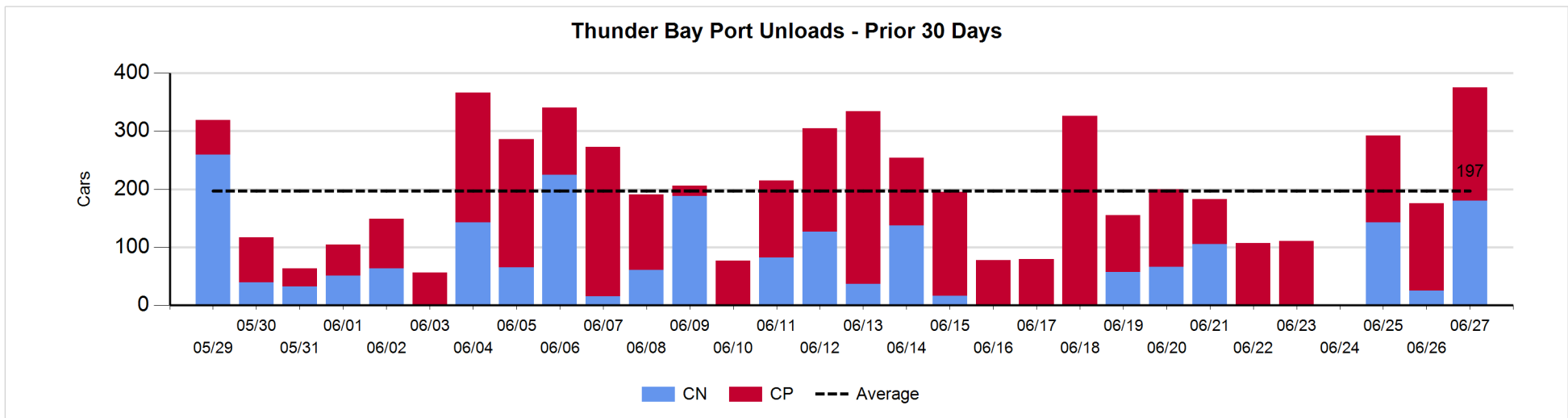
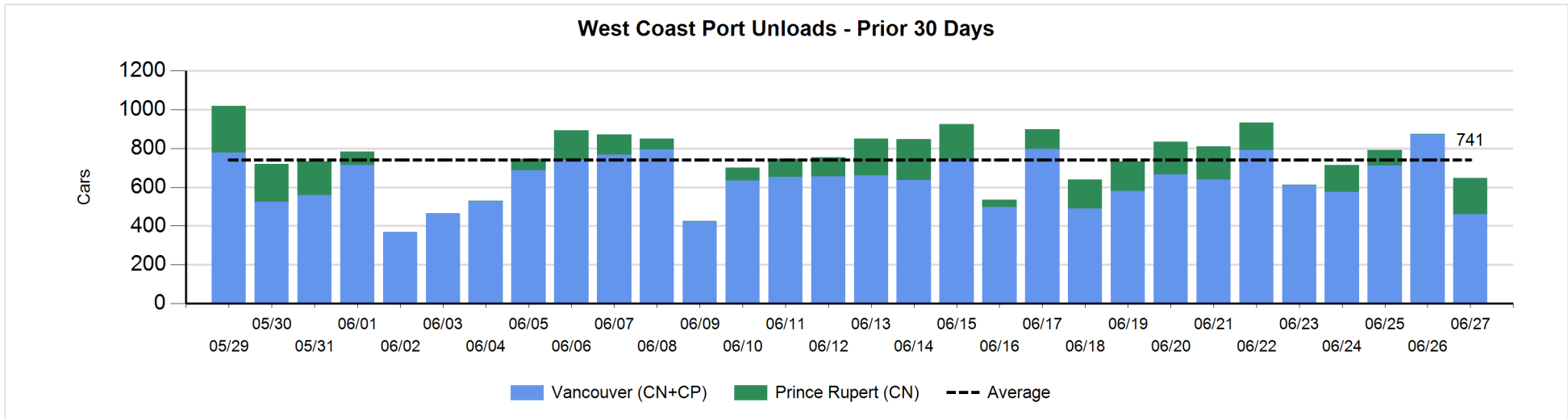
Change in Loads Not Moving 48 Hours or More - 6/27/2018

	E Canada	Prince Rupert	Thunder Bay	USA/MEX	Vancouver	Total
CN						
Origin	25	215		3	-92	151
Enroute	-2	86	0	-31	74	127
Destination	-7		0		-25	-32
	16	301	0	-28	-43	246
CP						
Origin	-1		40	-2	291	328
Enroute	0		0	-46	50	4
Destination			-50	-2	-46	-98
	-1		-10	-50	295	234
US Rail / Short Line						
Origin						
Enroute	1			-22		-21
Destination	3			1	-1	3
	4			-21	-1	-18



Port Unloads - 6/27/2018

	Prince Rupert	Vancouver	West Coast Total	Thunder Bay	Total
CN	189	100	289	180	469
CP		359	359	195	554
	189	459	648	375	1,023



Port Terminal Status

Vancouver

Daily Activity for 6/27/2018

	Cars Arrived	Cars Received in Interchange	Cars Delivered in Interchange	Cars Placed for Unloading	Loads on Wheels at Destination As of 6/27/2018
CN	290	28	105	230	516
CP	28	105	28	346	361
SRY	1			18	29

Port Unloads

	06/27	06/26	Week To Date	Last Week
CN	100	496	961	2,571
CP	359	376	1,082	1,780
SRY	10	8	22	55

Age Profile of Loaded Cars Waiting Placement for Unloading

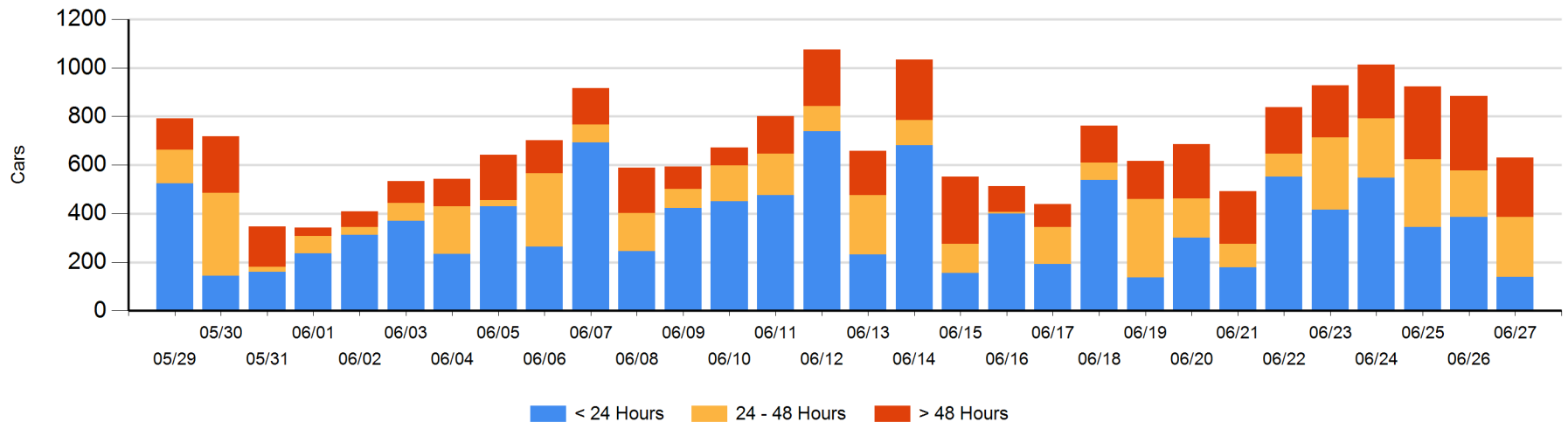
Today

	< 24 Hrs	24 - 48 Hrs	> 48-72 Hrs	> 72 Hrs	Total On Hand
CN	112	200	87	19	418
CP	28	45	49	90	212
SRY					0

Change in Last 24 Hours

	< 24 Hrs	24-48 Hrs	48 - 72 Hrs	> 72 Hrs
CN	-120	113	84	-31
CP	-127	-59	-112	-1
SRY				

Loaded Cars on Hand Vancouver Waiting for Placement - Last 30 Days All Railways



Port Terminal Status

Prince Rupert

Daily Activity for 6/27/2018

	Cars Arrived	Cars Received in Interchange	Cars Delivered in Interchange	Cars Placed for Unloading	Loads on Wheels at Destination As of 6/27/2018
CN	84			84	79

Port Unloads

	06/27	06/26	Week To Date	Last Week
CN	189	1	269	922

Age Profile of Loaded Cars Waiting Placement for Unloading

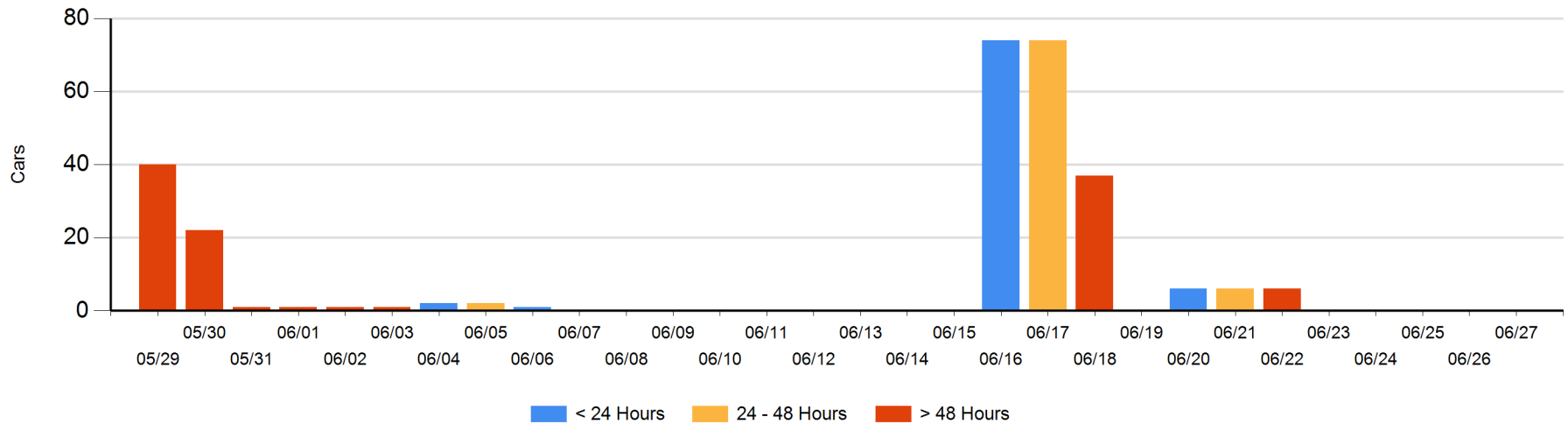
Today

	< 24 Hrs	24 - 48 Hrs	> 48-72 Hrs	> 72 Hrs	Total On Hand
CN					0

Change in Last 24 Hours

	< 24 Hrs	24-48 Hrs	48 - 72 Hrs	> 72 Hrs
CN				

Loaded Cars on Hand Prince Rupert Waiting for Placement - Last 30 Days All Railways



Port Terminal Status

Thunder Bay

Daily Activity for 6/27/2018

	Cars Arrived	Cars Received in Interchange	Cars Delivered in Interchange	Cars Placed for Unloading	Loads on Wheels at Destination As of 6/27/2018
CN	101			55	62
CP	112			252	208

Port Unloads

	06/27	06/26	Week To Date	Last Week
CN	180	25	348	228
CP	195	151	495	855

Age Profile of Loaded Cars Waiting Placement for Unloading

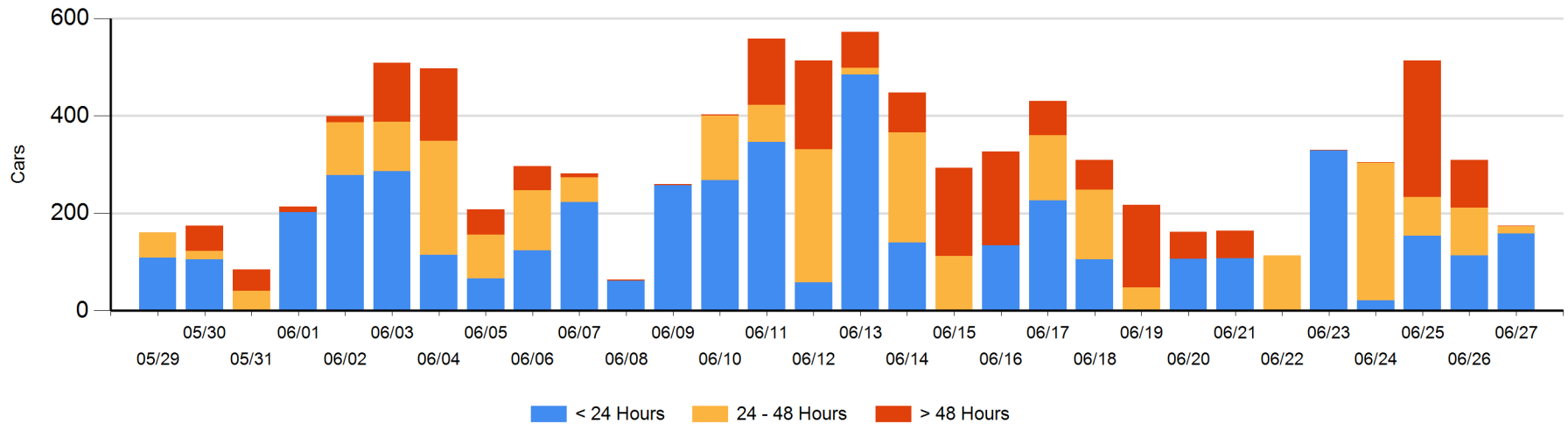
Today

	< 24 Hrs	24 - 48 Hrs	> 48-72 Hrs	> 72 Hrs	Total On Hand
CN	46				46
CP	112	16		1	129

Change in Last 24 Hours

	< 24 Hrs	24-48 Hrs	48 - 72 Hrs	> 72 Hrs
CN	46			
CP	-2	-81	-8	-90

Loaded Cars on Hand Thunder Bay Waiting for Placement - Last 30 Days All Railways



Measurement Definitions

Loads on Wheels	<p>Count of loaded rail cars including all rail cars that have been released loaded at origin and have not been reported by the railway as unloaded at destination.</p> <p>Counts include all rail cars (hopper cars and boxcars) moving within a pipeline.</p>
Loads Not Moving	<p>Loaded rail cars for which the railways have not reported a movement event for 48 hours or more whether the rail car is at origin, enroute or at destination.</p>
Port Unloads	<p>Count of rail cars reported by railways as unloaded at the western port destinations of Vancouver, Prince Rupert and Thunder Bay.</p> <p>Unload counts include all rail cars (hopper cars and boxcars) unloaded by all receivers including major port terminals, transloaders and other receivers.</p>
Cars Arrived	<p>Count of rail cars reported as arrived at the destination railway terminal.</p>
Cars Received in Interchange	<p>Count of rail cars received in interchange by each railway within a destination railway terminal. Interchange activity is tracked for the Vancouver and Thunder Bay pipelines as applicable.</p>
Cars Delivered in Interchange	<p>Count of rail cars delivered in interchange by each railway within a destination railway terminal. Interchange activity is tracked for the Vancouver and Thunder Bay pipelines as applicable.</p>
Cars Placed for Unloading	<p>Count of rail cars reported by the railways as placed loaded at the receiver's facility for unloading.</p>
Loads on Wheels at Destination	<p>Count of rail cars that remain under load within the destination railway terminal including rail cars that have been reported as placed for unloading but not yet reported as unloaded.</p>
Waiting Placement for Unloading	<p>Count of rail cars that have been reported as arrived at the destination railway terminal but not reported as placed for unloading by the railway.</p> <p>For the Ports of Vancouver, Prince Rupert and Thunder Bay the count of rail cars waiting placement for unloading is categorized by age – i.e. the elapsed time from arrival at destination to the current report date.</p>