

### **Note to Reader**

Prince Rupert unloads continue to be lower than normal as a result of ongoing maintenance at the terminal resulting in reduced unload capacity. While unloads have averaged 770 per week over the course of the last four weeks, they have now risen above the 900 car mark for two consecutive weeks consistent with an increase in hopper car orders in this corridor which have risen above 1,000 cars in week 48 for only the second time in the last six weeks. Alliance Grain Terminal in Vancouver has now begun planned maintenance which is expected to continue until mid-August.

### **SPEED READ**

- Loads on wheels dropped overnight, marking a slight decline in both CN and CP volumes. On a net basis, volumes decreased marginally across all corridors other than Thunder Bay.
- Network fluidity improved overnight, led by a fall in both CN and CP idle car counts by 5% and 26%, respectively. The count of cars for 4+ days decreased for the first time in the last four days - currently at 868 cars.
- Week 48 unloads now ahead of prior week's performance after four days by more than 200 unloads, reflecting an improvement in week over week performance at Vancouver and Thunder Bay offset by reduced unloads at Prince Rupert.

=====

### **Loads on Wheels**

- Loads on wheels dropped 3% (-253) overnight. The decline reflects reduced traffic levels on both CN and CP - currently at 8,746 and 6% above the trailing 30 day average.
- On a net basis, the fall in loads on wheels indicates lower volumes across all corridors other than Thunder Bay.
- CN volumes decreased slightly by 1% (-40) overnight with lower traffic in Prince Rupert and Vancouver corridors offset by increased volumes in USA/MEX corridor. System wide CN loads on wheels - now at 4,138 and 5% above the trailing 30 day average.
- CP volumes dropped 3% (-124) overnight for the third consecutive day driven by decreased volumes in the Vancouver corridor offset by a gain in traffic in the Thunder Bay and USA/MEX corridors. CP system wide loads on wheels - now at 4,295 and 7% above the trailing 30 day average.
- Vancouver - currently at 4,957, down 4% overnight and is in line with the trailing 30 day average.
- The Prince Rupert pipeline - currently at 887, declined 5% overnight, below the 1,000 car threshold for the second consecutive day, and 7% above the trailing 30 day average.
- Thunder Bay volumes increased 4% overnight - now at 1,476, the highest seen in the last 30 days, above the 1,000 car threshold for the seventh consecutive day and 29% above the trailing 30 day average with 78% of traffic moving on CP.

### **Hopper Car Rationing**

- No hopper car rationing has been reported for either CN or CP in week 47 and none expected in week 48.

### **Loads Not Moving**

- **The count of cars not moving for 48+ hours decreased 18% (-440) overnight, reflecting reduced counts from both major railways. Idle car counts currently at 1,947.**
- CN
  - **The count of idle cars dropped 5% (-47) overnight - idle car counts - now at 850.**
  - The number of cars idle for 4+ days declined 22% overnight and have now declined for two consecutive days - currently at 332 cars.

- The count of cars not moving for 7+ days up significantly by 102% overnight and have now increased for the second consecutive day - now at 174 cars.
- Vancouver represents 55% of all idle cars.
- CP
  - **CP counts down 26% (-393) overnight - idle car counts now at 1,097.**
  - The number of cars idle for 4+ days down 26% overnight - now at 536 cars.
  - The number of cars idle for 7+ days increased significantly by 176% overnight and have now increased for the third consecutive day - currently at 340 cars, the highest seen in the last 30 days.
  - Vancouver accounts for 76% of all idle cars.
  - In total 74% of all idle cars are dwelling at origin locations.

### **Port Performance**

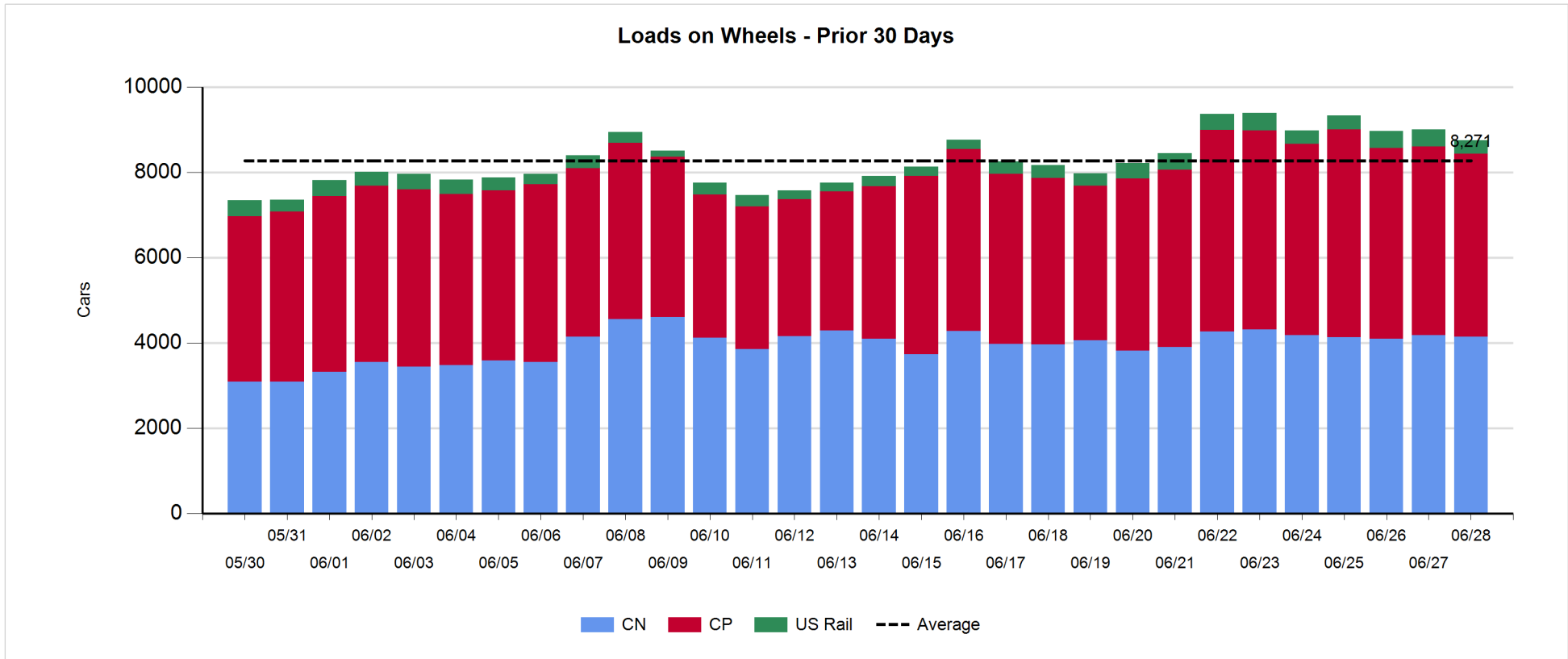
- CN and CP reported a total of 930 cars unloaded at the three western ports, below the 1,000 car threshold for the first time in the last five days. Four days in Week 48 unloads are tracking ahead of last week's pace by more than 200, reflecting an increase in unloads at Vancouver and Thunder Bay offset by a fall in unloads at Prince Rupert.
- Vancouver
  - 664 unloads reported by CN and CP at the Port of Vancouver; CN - 413 and CP - 251.
  - There are more than 400 cars on hand in Vancouver waiting placement for unloading with nearly 400 cars arriving at the port in the last 24 hours.
  - CN and CP have nearly 800 cars, west of Alberta, enroute to Vancouver, with about 500 Kamloops and west; and 63% of traffic currently moving on CP.
- Prince Rupert
  - Prince Rupert reported 119 unloads, above the 100 car threshold for the second consecutive day and now behind last week's unloads after four days by around 250.
  - Loads on wheels now below 1,000 cars.
  - There are more than 300 cars west of Jasper - predominantly Prince George and west.
  - There are currently 120 cars on site with fewer than 200 cars arriving at the port in the last 24 hours. Given the structure of the pipeline, it would appear that there should be sufficient cars to support unloads for the balance of the week.
- Thunder Bay
  - 147 unloads reported at Thunder Bay yesterday. Four days in Week 48 unloads track ahead of last week's pace by about 130 unloads.
  - There are more than 400 cars on site at Thunder Bay with about 300 cars arriving at the port in the prior 24 hours.
  - There are more than 100 cars enroute to Thunder Bay from Winnipeg and east. Cars on hand and those enroute should support unloads for another day or two.

**Daily Loads on Wheels - 6/28/2018**

	E Canada	Prince Rupert	Thunder Bay	USA/MEX	Vancouver	Total
CN	331	887	326	192	2,402	4,138
CP	73		1,150	551	2,521	4,295
Short Line	6				34	40
US Rail				273		273
	410	887	1,476	1,016	4,957	8,746

**Change in Loads on Wheels - Prior 24 Hours**

	E Canada	Prince Rupert	Thunder Bay	USA/MEX	Vancouver	Total
CN	-7	-46	-7	31	-11	-40
CP	-19		61	50	-216	-124
Short Line	-5				5	0
US Rail				-89		-89
	-31	-46	54	-8	-222	-253

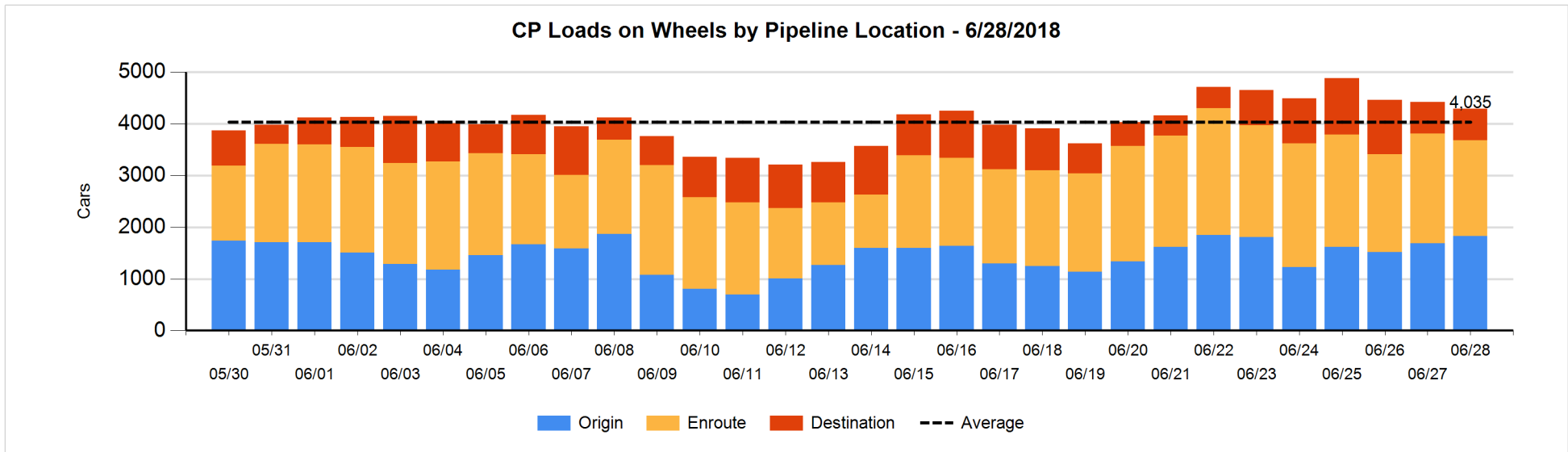
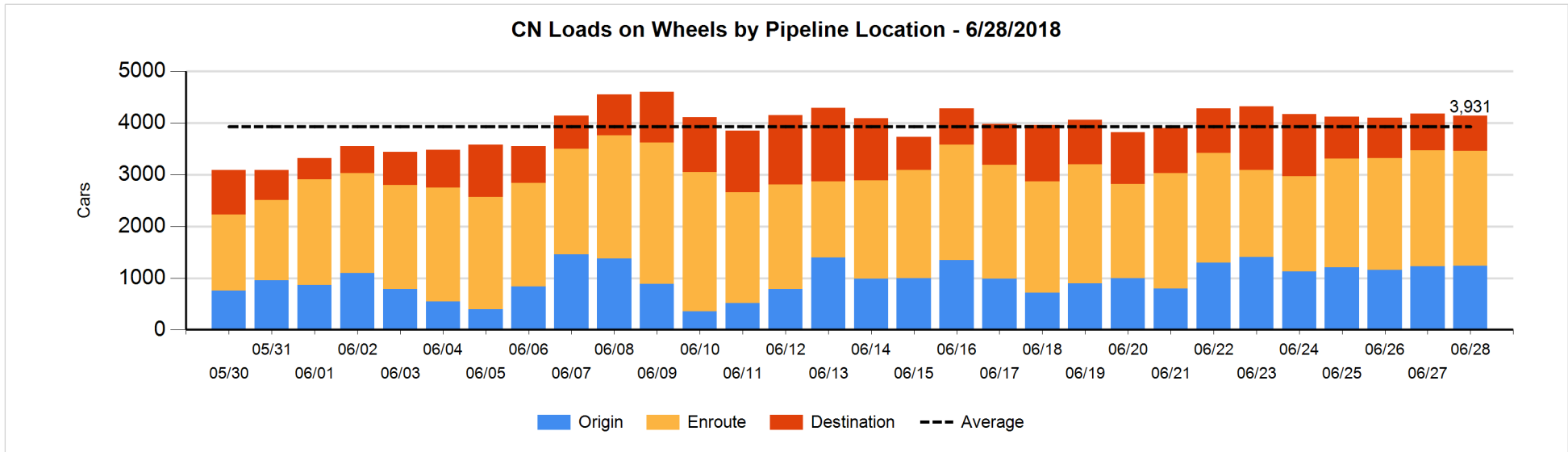


**Daily Loads on Wheels By Pipeline Location - 6/28/2018**

	E Canada	Prince Rupert	Thunder Bay	USA/MEX	Vancouver	Total
CN						
Origin	1	199	109	42	884	1,235
Enroute	257	568	87	125	1,184	2,221
Destination	73	120	130	25	334	682
	331	887	326	192	2,402	4,138
CP						
Origin	1		672	118	1,041	1,832
Enroute	16		176	408	1,246	1,846
Destination	56		302	25	234	617
	73		1,150	551	2,521	4,295
US Rail / Short Line						
Origin						
Enroute	3			128		131
Destination	3			145	34	182
	6			273	34	313

**Change in Daily Loads on Wheels By Pipeline Location - Prior 24 Hours**

	E Canada	Prince Rupert	Thunder Bay	USA/MEX	Vancouver	Total
CN						
Origin	-50	-59	0	29	90	10
Enroute	21	-28	-75	-20	81	-21
Destination	22	41	68	22	-182	-29
	-7	-46	-7	31	-11	-40
CP						
Origin	-18		143	14	6	145
Enroute	-57		-176	55	-95	-273
Destination	56		94	-19	-127	4
	-19		61	50	-216	-124
US Rail / Short Line						
Origin						
Enroute	1			-115		-114
Destination	-6			26	5	25
	-5			-89	5	-89

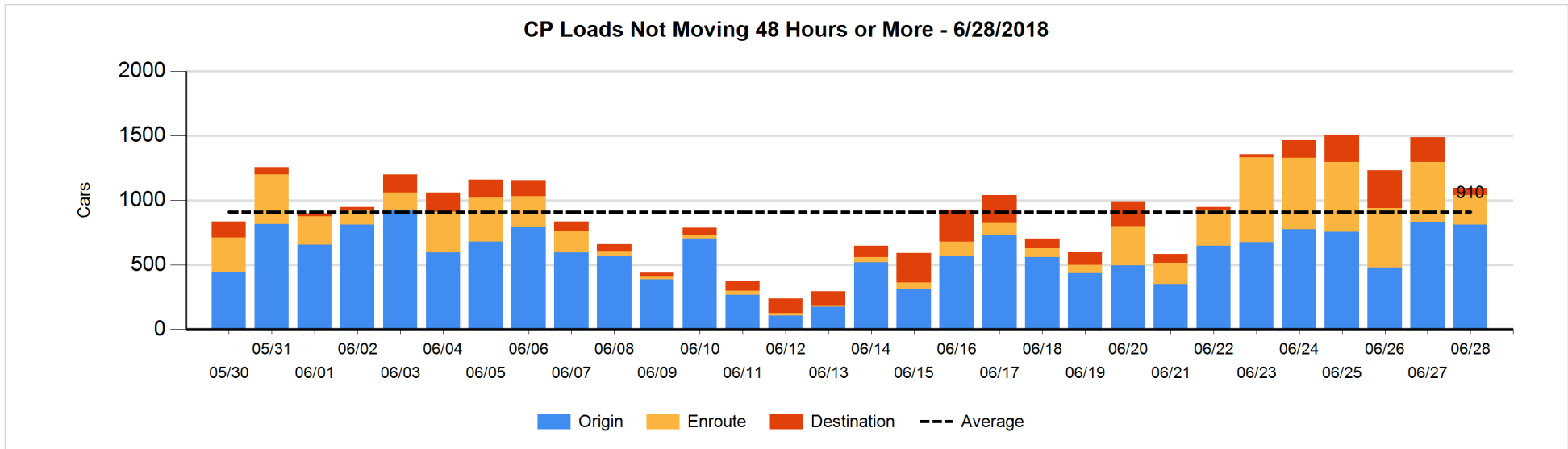
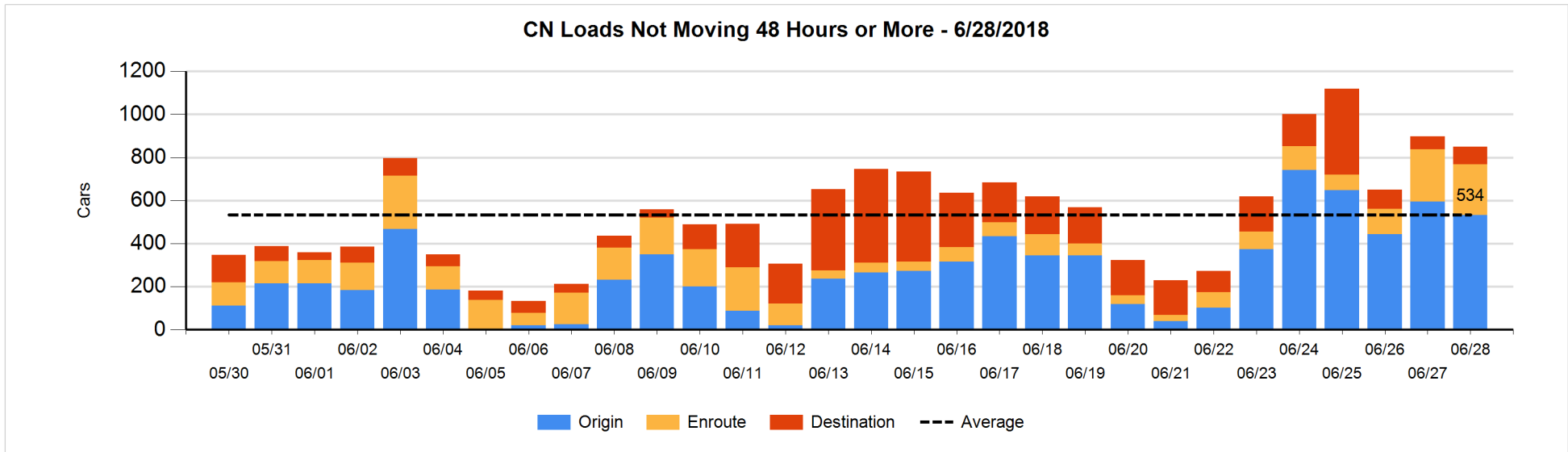


**Loads Not Moving 48 Hours or More - 6/28/2018**

	E Canada	Prince Rupert	Thunder Bay	USA/MEX	Vancouver	Total
<b>CN</b>						
Origin		103	94	7	328	532
Enroute	65	61		18	91	235
Destination	27		2	2	52	83
	92	164	96	27	471	850
<b>CP</b>						
Origin			171	1	638	810
Enroute	1		3	58	167	229
Destination			16	8	34	58
	1		190	67	839	1097
<b>US Rail / Short Line</b>						
Origin						
Enroute	2			23		25
Destination				17	13	30
	2			40	13	55

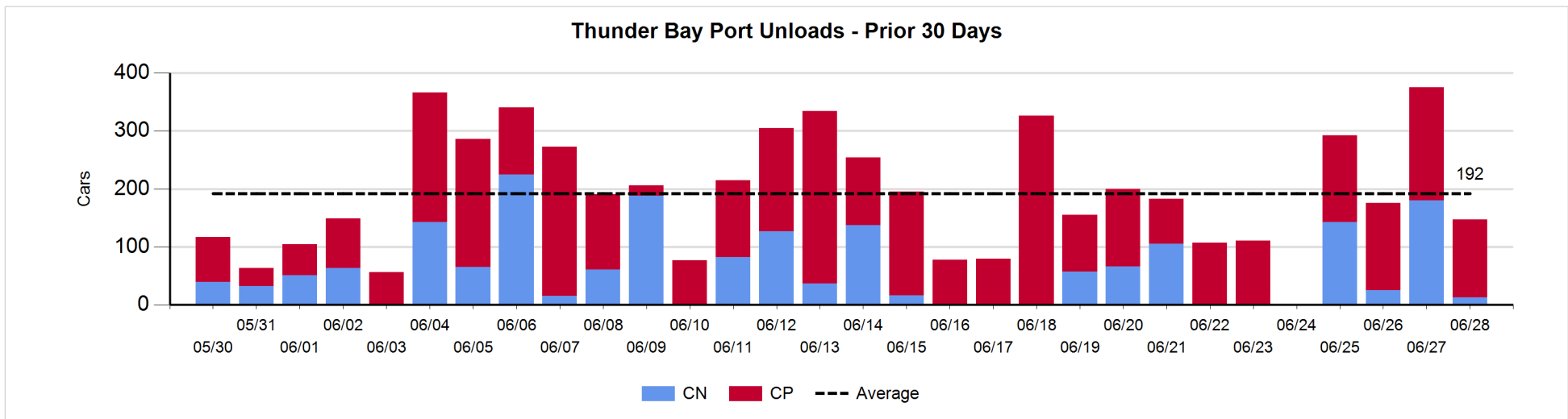
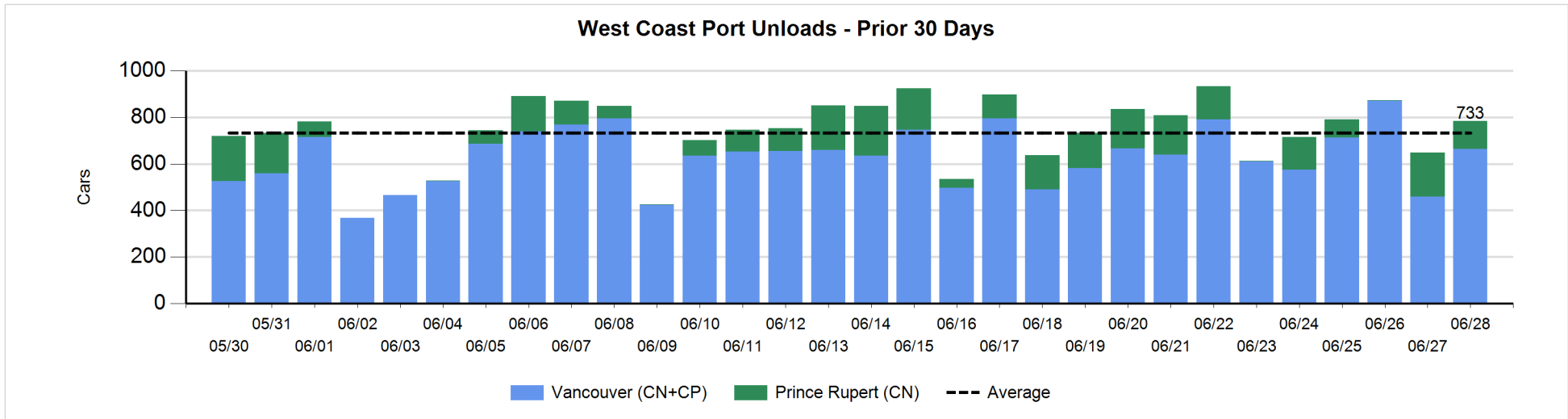
**Change in Loads Not Moving 48 Hours or More - 6/28/2018**

	E Canada	Prince Rupert	Thunder Bay	USA/MEX	Vancouver	Total
<b>CN</b>						
Origin	-25	-139	94	0	7	-63
Enroute	59	-36	-1	-1	-29	-8
Destination	21		0	2	1	24
	55	-175	93	1	-21	-47
<b>CP</b>						
Origin	-19		127	1	-130	-21
Enroute	0		-3	-5	-229	-237
Destination			16	8	-159	-135
	-19		140	4	-518	-393
<b>US Rail / Short Line</b>						
Origin						
Enroute	0			3		3
Destination	-3			2	4	3
	-3			5	4	6



**Port Unloads - 6/28/2018**

	Prince Rupert	Vancouver	West Coast Total	Thunder Bay	Total
CN	119	413	532	13	545
CP		251	251	134	385
	119	664	783	147	930





**Port Terminal Status**

**Vancouver**

Daily Activity for 6/28/2018

	Cars Arrived	Cars Received in Interchange	Cars Delivered in Interchange	Cars Placed for Unloading	Loads on Wheels at Destination As of 6/28/2018
CN	102	135	6	318	334
CP	269		139	253	234
SRY		10		11	34

**Port Unloads**

	06/28	06/27	Week To Date	Last Week
CN	413	100	1,374	2,571
CP	251	359	1,333	1,780
SRY	11	10	33	55

**Age Profile of Loaded Cars Waiting Placement for Unloading**

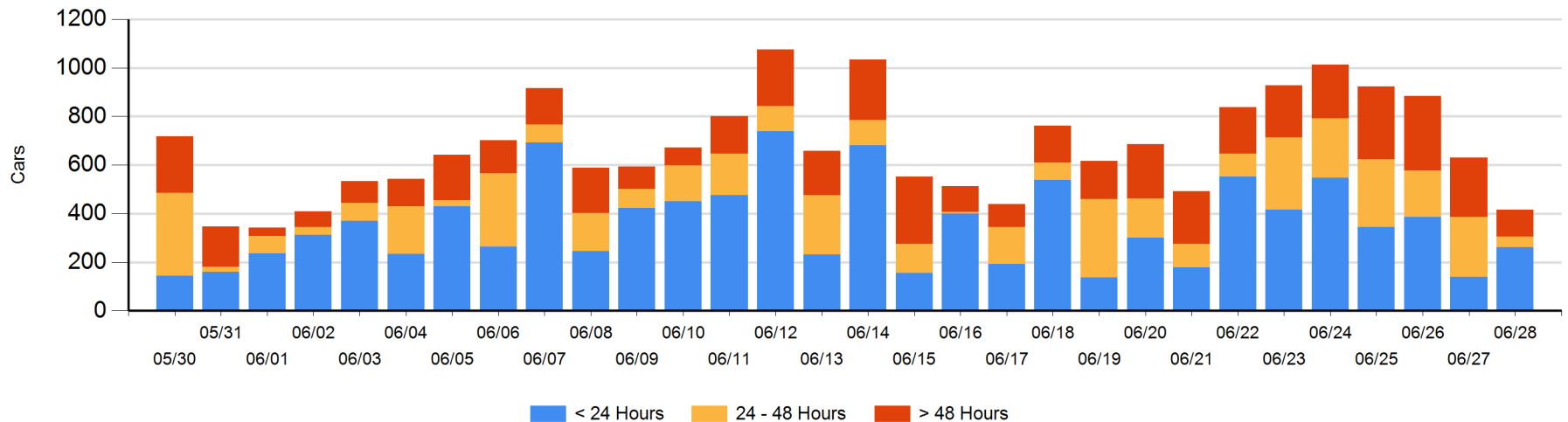
**Today**

	< 24 Hrs	24 - 48 Hrs	> 48-72 Hrs	> 72 Hrs	Total On Hand
CN	102	17	71	16	206
CP	159	28	4	19	210
SRY					0

**Change in Last 24 Hours**

	< 24 Hrs	24-48 Hrs	48 - 72 Hrs	> 72 Hrs
CN	-10	-183	-16	-3
CP	131	-17	-45	-71
SRY				

**Loaded Cars on Hand Vancouver Waiting for Placement - Last 30 Days All Railways**



**Port Terminal Status**

**Prince Rupert**

Daily Activity for 6/28/2018

	Cars Arrived	Cars Received in Interchange	Cars Delivered in Interchange	Cars Placed for Unloading	Loads on Wheels at Destination As of 6/28/2018
CN	160			160	120

**Port Unloads**

	06/28	06/27	Week To Date	Last Week
CN	119	189	388	922

**Age Profile of Loaded Cars Waiting Placement for Unloading**

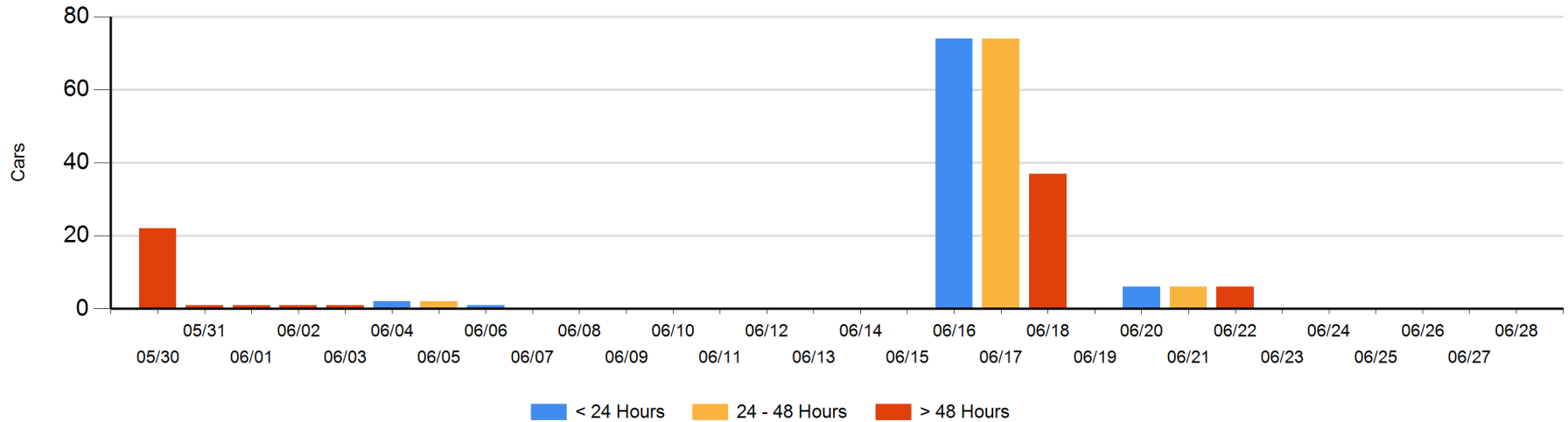
**Today**

	< 24 Hrs	24 - 48 Hrs	> 48-72 Hrs	> 72 Hrs	Total On Hand
CN					0

**Change in Last 24 Hours**

	< 24 Hrs	24-48 Hrs	48 - 72 Hrs	> 72 Hrs
CN				

Loaded Cars on Hand Prince Rupert Waiting for Placement - Last 30 Days All Railways



**Port Terminal Status**

**Thunder Bay**

Daily Activity for 6/28/2018

	Cars Arrived	Cars Received in Interchange	Cars Delivered in Interchange	Cars Placed for Unloading	Loads on Wheels at Destination As of 6/28/2018
CN	81				130
CP	229			65	302

**Port Unloads**

	06/28	06/27	Week To Date	Last Week
CN	13	180	361	228
CP	134	195	629	855

**Age Profile of Loaded Cars Waiting Placement for Unloading**

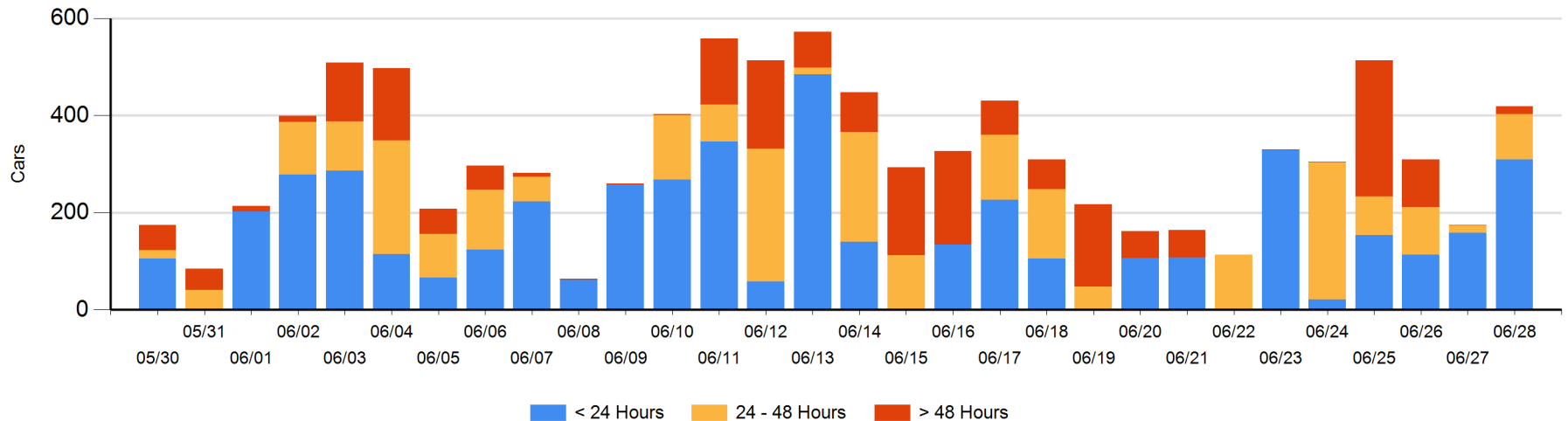
**Today**

	< 24 Hrs	24 - 48 Hrs	> 48-72 Hrs	> 72 Hrs	Total On Hand
CN	81	46			127
CP	229	47	16		292

**Change in Last 24 Hours**

	< 24 Hrs	24-48 Hrs	48 - 72 Hrs	> 72 Hrs
CN	35	46		
CP	117	31	16	-1

Loaded Cars on Hand Thunder Bay Waiting for Placement - Last 30 Days All Railways



## Measurement Definitions

Loads on Wheels	<p>Count of loaded rail cars including all rail cars that have been released loaded at origin and have not been reported by the railway as unloaded at destination.</p> <p>Counts include all rail cars (hopper cars and boxcars) moving within a pipeline.</p>
Loads Not Moving	<p>Loaded rail cars for which the railways have not reported a movement event for 48 hours or more whether the rail car is at origin, enroute or at destination.</p>
Port Unloads	<p>Count of rail cars reported by railways as unloaded at the western port destinations of Vancouver, Prince Rupert and Thunder Bay.</p> <p>Unload counts include all rail cars (hopper cars and boxcars) unloaded by all receivers including major port terminals, transloaders and other receivers.</p>
Cars Arrived	<p>Count of rail cars reported as arrived at the destination railway terminal.</p>
Cars Received in Interchange	<p>Count of rail cars received in interchange by each railway within a destination railway terminal. Interchange activity is tracked for the Vancouver and Thunder Bay pipelines as applicable.</p>
Cars Delivered in Interchange	<p>Count of rail cars delivered in interchange by each railway within a destination railway terminal. Interchange activity is tracked for the Vancouver and Thunder Bay pipelines as applicable.</p>
Cars Placed for Unloading	<p>Count of rail cars reported by the railways as placed loaded at the receiver's facility for unloading.</p>
Loads on Wheels at Destination	<p>Count of rail cars that remain under load within the destination railway terminal including rail cars that have been reported as placed for unloading but not yet reported as unloaded.</p>
Waiting Placement for Unloading	<p>Count of rail cars that have been reported as arrived at the destination railway terminal but not reported as placed for unloading by the railway.</p> <p>For the Ports of Vancouver, Prince Rupert and Thunder Bay the count of rail cars waiting placement for unloading is categorized by age – i.e. the elapsed time from arrival at destination to the current report date.</p>