

## Loads on Wheels

- Loads on wheels declined slightly (206 cars) overnight - loads on wheels now at 10,050 - 4% below the trailing 30 day average
- The decline in loads on wheels reflects reduced volumes on CP (-220) and a slight increase on CN (+65).
- The change in CN volumes reflects principally increases in the Vancouver and Thunder Bay corridors offset by a decline in the Prince Rupert corridor. System wide CN loads on wheels now at 5,000 - 6% below the trailing 30 day average.
- The decline in CP volumes reflects a decrease in the Vancouver corridor (-380) offset by an increase in other corridors most notably Thunder Bay (+109). CP system wide loads on wheels now at 4,727 - in line with the trailing 30 day average.
- Vancouver now at 6,088 - remaining above the 6,000 car threshold but falling 11% below the trailing 30 day average.
- The Prince Rupert pipeline currently sits at 1,144 - now 9% below the trailing 30 day average.
- Thunder Bay volumes increased on both CN and CP and now stand at 702. The volume of traffic moving to Thunder Bay continues to increase in preparation for the opening of the Seaway. CN and CP have accepted nearly 1,200 orders to Thunder Bay for week 34 as such it is expected that volumes in this corridor should increase steadily throughout the week.

## Hopper Car Rationing

- CN rationed more than 700 orders last week (week 33) and early indications are that rationing is continuing in both weeks 34 and 35.

## Loads Not Moving

- The count of cars not moving for 48+ hours on CN and CP declined marginally on both railways. The count of idle cars now stands at 2,968 - near the same levels seen 10 days ago. While total idle car counts have changed little over this time period CN has steadily reduced its counts while CP counts have increased. Total idle cars for both railways remain above the 2,400 car mark for the 12th consecutive day.
- CN
  - The count of idle cars decreased marginally (-47) in the prior 24 hours - idle cars on CN now at 415 - the lowest level in the last 30 days.
  - The number of cars idle for 4+ days declined by 40% overnight but remains above the 100 car mark.
  - The count of cars not moving for 7+ days declined 50% overnight - now less than 100 cars.
  - 51% of all idle cars are destined to Vancouver. Approximately 42% of all idle cars are currently dwelling at origin.
- CP
  - CP counts declined slightly (-73) overnight - idle cars now at 2,553.
  - The number of cars idle for 4+ days increased by 25% overnight - now nearing 1,500 cars - the highest level in the last 30 days.
  - The count of cars idle for 7+ days increased 33% overnight - now nearing 500 cars.
  - Vancouver continues to account for the majority of idle cars (70%) with 87% of all idle cars dwelling at origin locations - as has been the case for much of the past 30 days.

## Port Performance

- CN and CP reported 1,070 cars unloaded at the three western ports - four days in, week 34 unloads are running about 100 unloads behind last week reflecting higher unloads at Prince Rupert and lower unloads at Vancouver.
- Vancouver
  - 800 cars reported unloaded by CN and CP at the Port of Vancouver; CN - 405 and CP - 395
  - There are 500 cars on hand at Vancouver waiting placement for unloading - with 700+ cars arriving at the port in the last 24 hours.

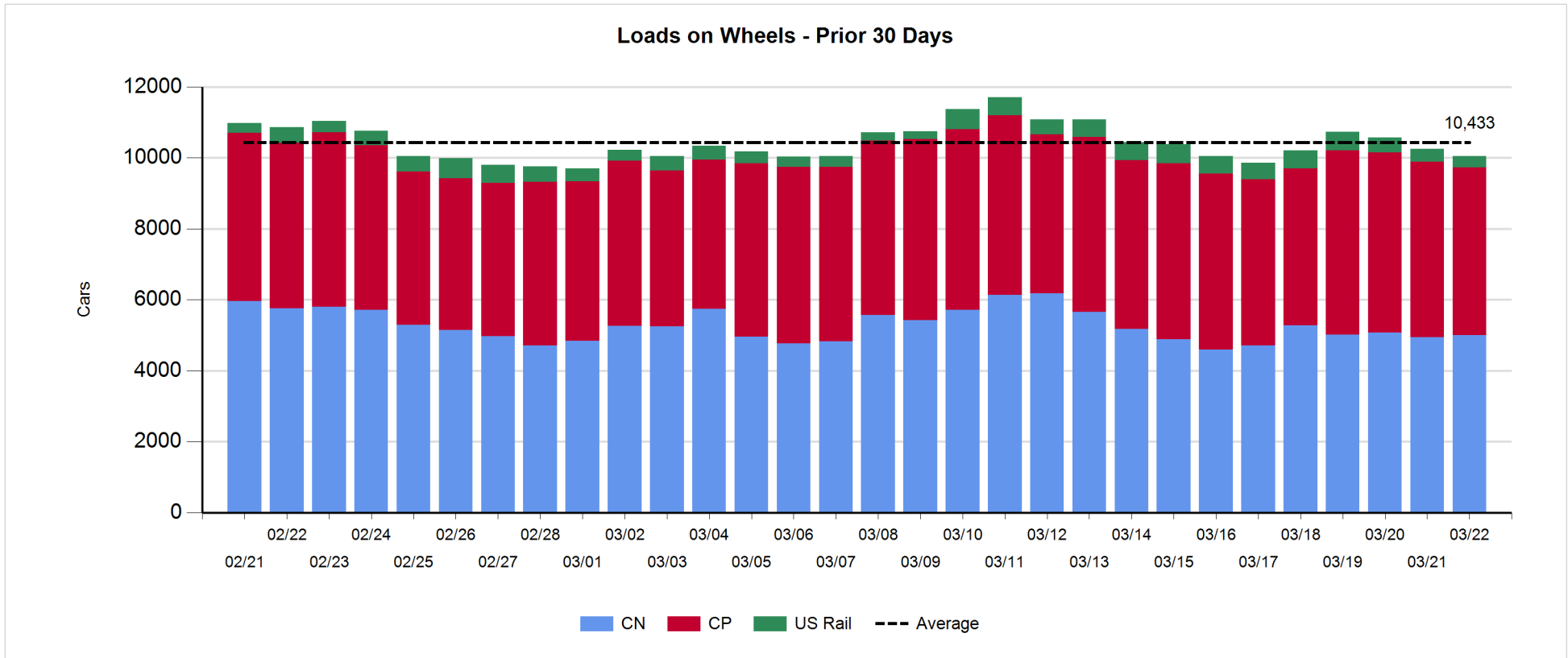
- 
- CN and CP have nearly 1,000 cars enroute to Vancouver west of Alberta with 75% of cars currently moving on CP; 40% (2,500 cars) of all cars destined to Vancouver are currently at origin locations awaiting movement with 1,700 of these - 90% of which are situated on CP lines - not having moved for 48+ hours.
  - Prince Rupert
    - Prince Rupert unloads week to date have averaged 250 cars per day putting them on a pace to exceed last week's unload total of 1,200.
    - Loads on wheels have declined slightly overnight but remain above 1,100.
    - There are currently 375 loads west of Jasper - all west of Prince George - destined to Prince Rupert which should continue to support strong unload activity.

**Daily Loads on Wheels - 3/22/2018**

	E Canada	Prince Rupert	Thunder Bay	USA/MEX	Vancouver	Total
CN	485	1,144	167	538	2,666	5,000
CP	244		535	588	3,360	4,727
Short Line	23				62	85
US Rail				238		238
	752	1,144	702	1,364	6,088	10,050

**Change in Loads on Wheels - Prior 24 Hours**

	E Canada	Prince Rupert	Thunder Bay	USA/MEX	Vancouver	Total
CN	25	-203	66	13	164	65
CP	-5		109	56	-380	-220
Short Line	-16				-2	-18
US Rail				-33		-33
	4	-203	175	36	-218	-206

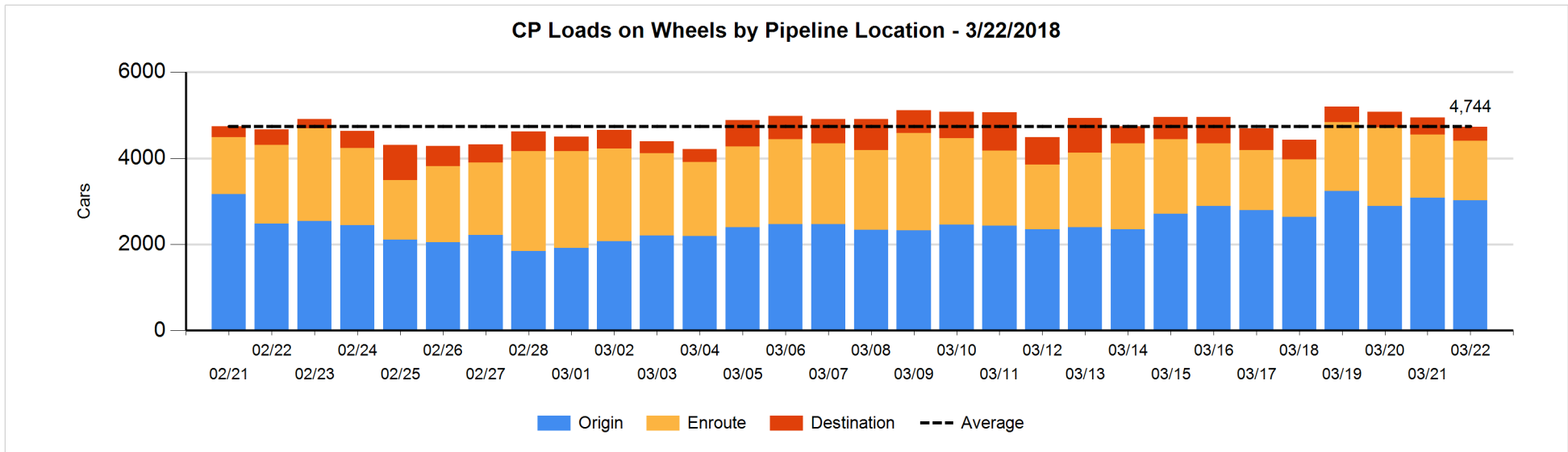
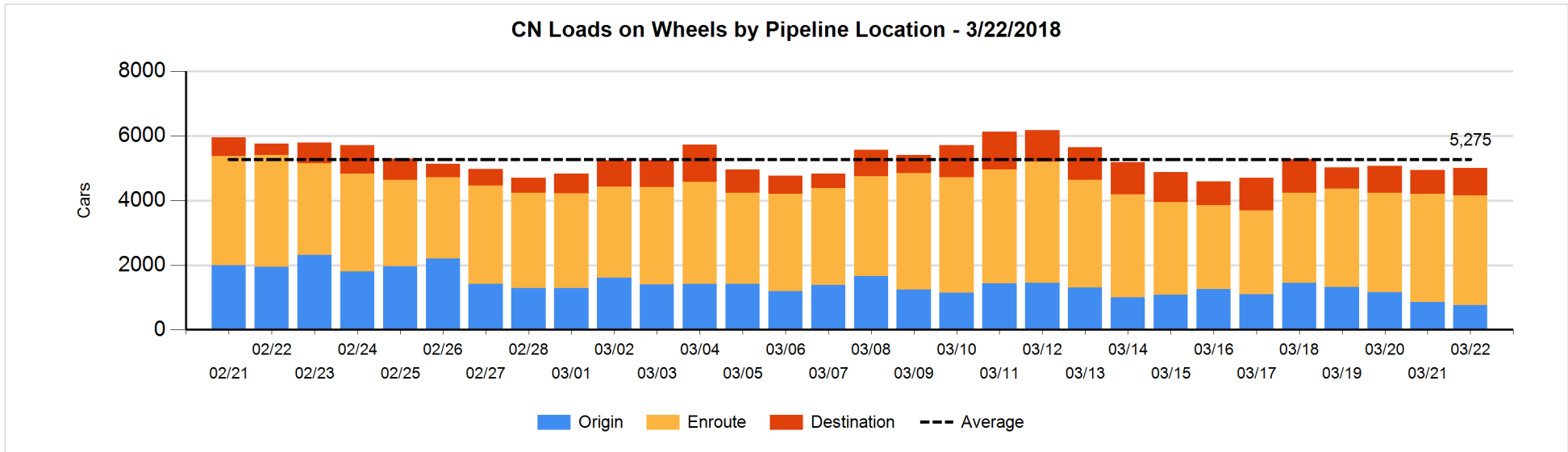


**Daily Loads on Wheels By Pipeline Location - 3/22/2018**

	E Canada	Prince Rupert	Thunder Bay	USA/MEX	Vancouver	Total
CN						
Origin	97	88	96	29	452	762
Enroute	339	886		481	1,691	3,397
Destination	49	170	71	28	523	841
	485	1,144	167	538	2,666	5,000
CP						
Origin	168		420	386	2,051	3,025
Enroute	75		115	140	1,048	1,378
Destination	1			62	261	324
	244		535	588	3,360	4,727
US Rail / Short Line						
Origin						
Enroute	9			174		183
Destination	14			64	62	140
	23			238	62	323

**Change in Daily Loads on Wheels By Pipeline Location - Prior 24 Hours**

	E Canada	Prince Rupert	Thunder Bay	USA/MEX	Vancouver	Total
CN						
Origin	37	-240	96	10	1	-96
Enroute	0	-15	-99	9	148	43
Destination	-12	52	69	-6	10	113
	25	-203	66	13	159	60
CP						
Origin	-52		-2	100	-98	-52
Enroute	47		111	-58	-193	-93
Destination	0			14	-89	-75
	-5		109	56	-380	-220
US Rail / Short Line						
Origin						
Enroute	0			15		15
Destination	-16			-48	-2	-66
	-16			-33	-2	-51

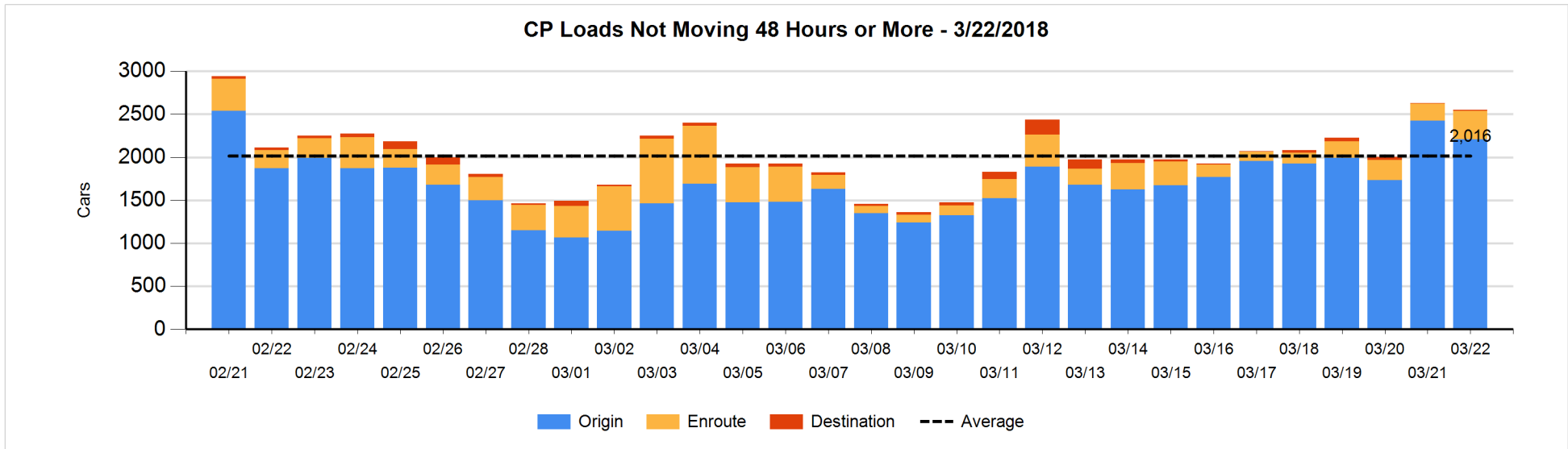
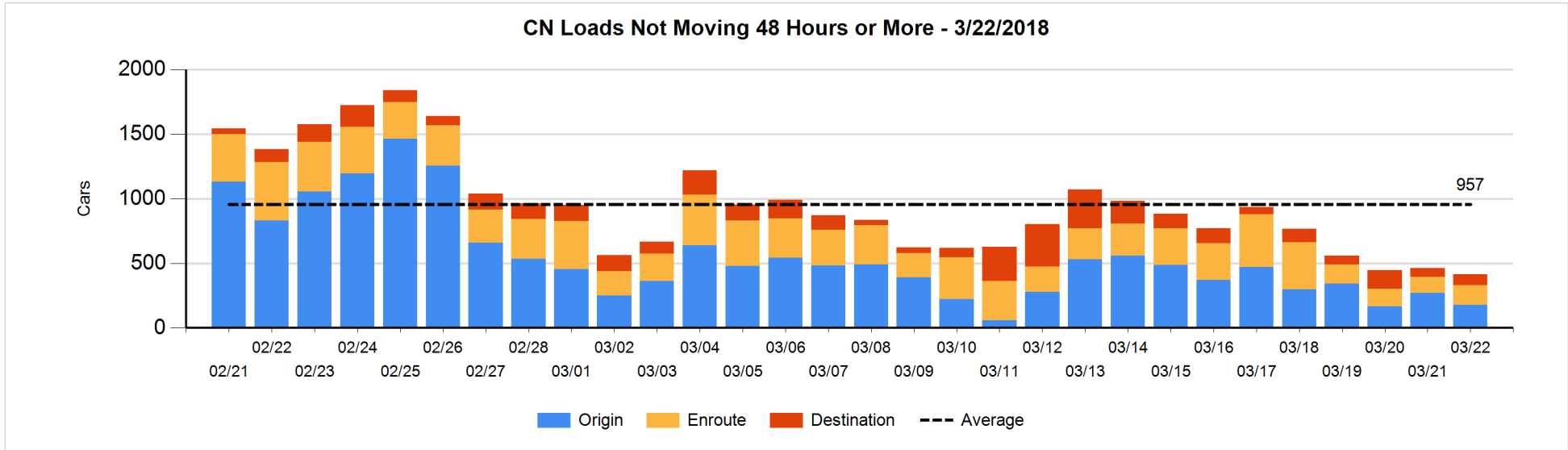


**Loads Not Moving 48 Hours or More - 3/22/2018**

	E Canada	Prince Rupert	Thunder Bay	USA/MEX	Vancouver	Total
<b>CN</b>						
Origin		47		1	128	176
Enroute	60	22		25	46	153
Destination	33	2		14	37	86
	93	71		40	211	415
<b>CP</b>						
Origin	166		224	258	1563	2211
Enroute				93	236	329
Destination				10	3	13
	166		224	361	1802	2553
<b>US Rail / Short Line</b>						
Origin						
Enroute	3			17		20
Destination				38	53	91
	3			55	53	111

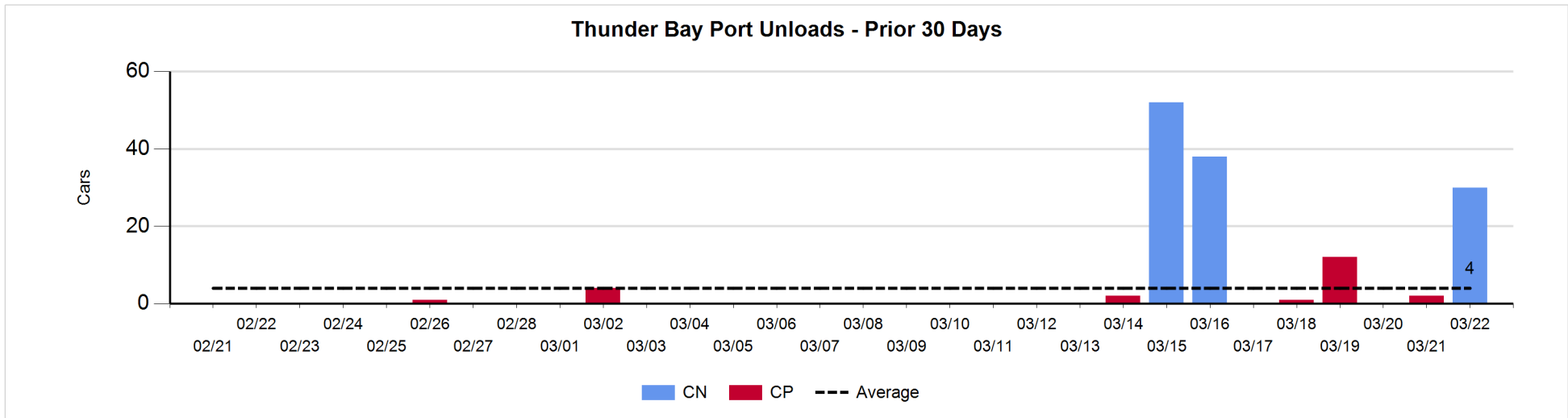
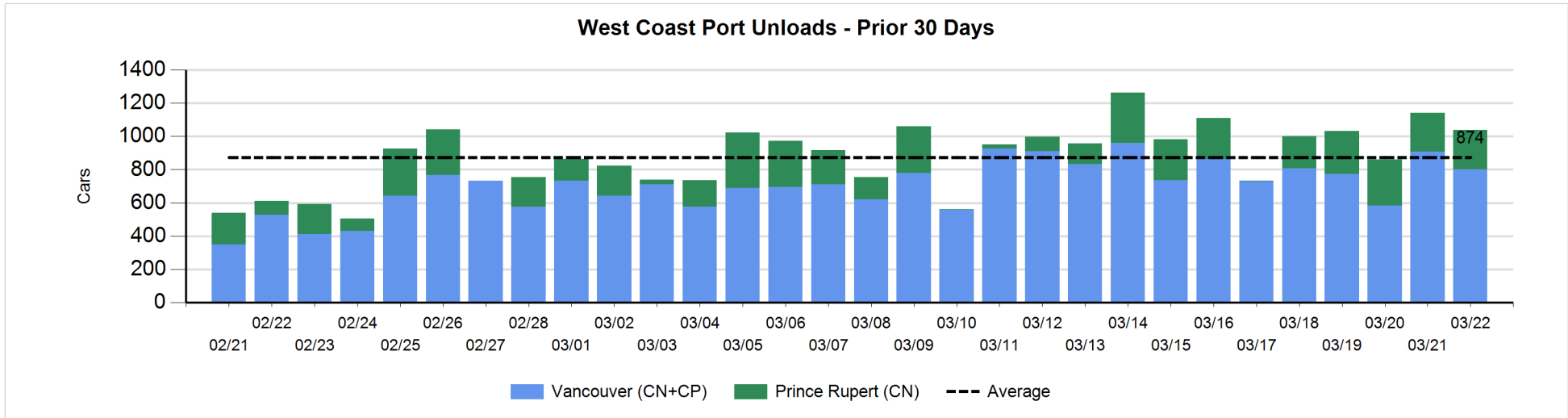
**Change in Loads Not Moving 48 Hours or More - 3/22/2018**

	E Canada	Prince Rupert	Thunder Bay	USA/MEX	Vancouver	Total
<b>CN</b>						
Origin		-12		-1	-82	-95
Enroute	-5	5		5	23	28
Destination	-4	-1	-2	5	22	20
	-9	-8	-2	9	-37	-47
<b>CP</b>						
Origin	-52		-111	8	-61	-216
Enroute				39	94	133
Destination				10	0	10
	-52		-111	57	33	-73
<b>US Rail / Short Line</b>						
Origin						
Enroute	-4			-1		-5
Destination	-1			17	7	23
	-5			16	7	18



Port Unloads - 3/22/2018

	Prince Rupert	Vancouver	West Coast Total	Thunder Bay	Total
CN	240	405	645	30	675
CP		395	395		395
	240	800	1,040	30	1,070





**Port Terminal Status**

**Vancouver**

Daily Activity for 3/22/2018

	Cars Arrived	Cars Received in Interchange	Cars Delivered in Interchange	Cars Placed for Unloading	Loads on Wheels at Destination As of 3/22/2018
CN	340	257	4	446	523
CP	388	2	267	352	261
SRY		12		9	62

**Port Unloads**

	03/22	03/21	Week To Date	Last Week
CN	405	531	1,663	3,106
CP	395	378	1,404	2,740
SRY	9	11	52	84

**Age Profile of Loaded Cars Waiting Placement for Unloading**

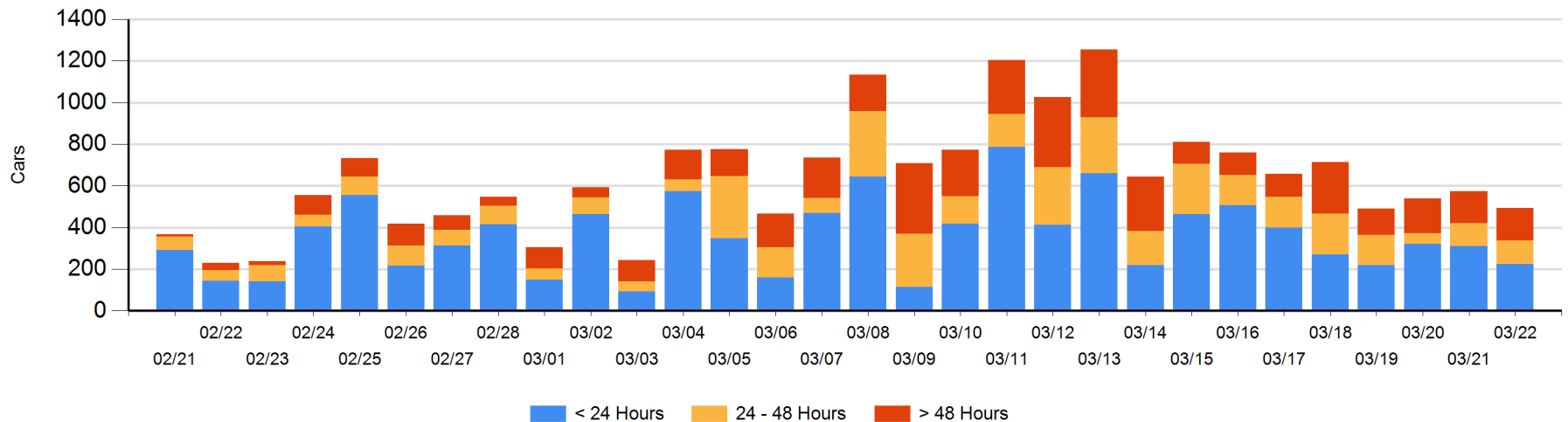
**Today**

	< 24 Hrs	24 - 48 Hrs	> 48-72 Hrs	> 72 Hrs	Total On Hand
CN	106	58	83	35	282
CP	119	55	11	26	211
SRY					0

**Change in Last 24 Hours**

	< 24 Hrs	24-48 Hrs	48 - 72 Hrs	> 72 Hrs
CN	-43	-35	64	-8
CP	-43	37	-11	-43
SRY				

**Loaded Cars on Hand Vancouver Waiting for Placement - Last 30 Days All Railways**



**Port Terminal Status**

**Prince Rupert**

Daily Activity for 3/22/2018

	Cars Arrived	Cars Received in Interchange	Cars Delivered in Interchange	Cars Placed for Unloading	Loads on Wheels at Destination As of 3/22/2018
CN	294			221	170

**Port Unloads**

	03/22	03/21	Week To Date	Last Week
CN	240	231	1,007	1,201

**Age Profile of Loaded Cars Waiting Placement for Unloading**

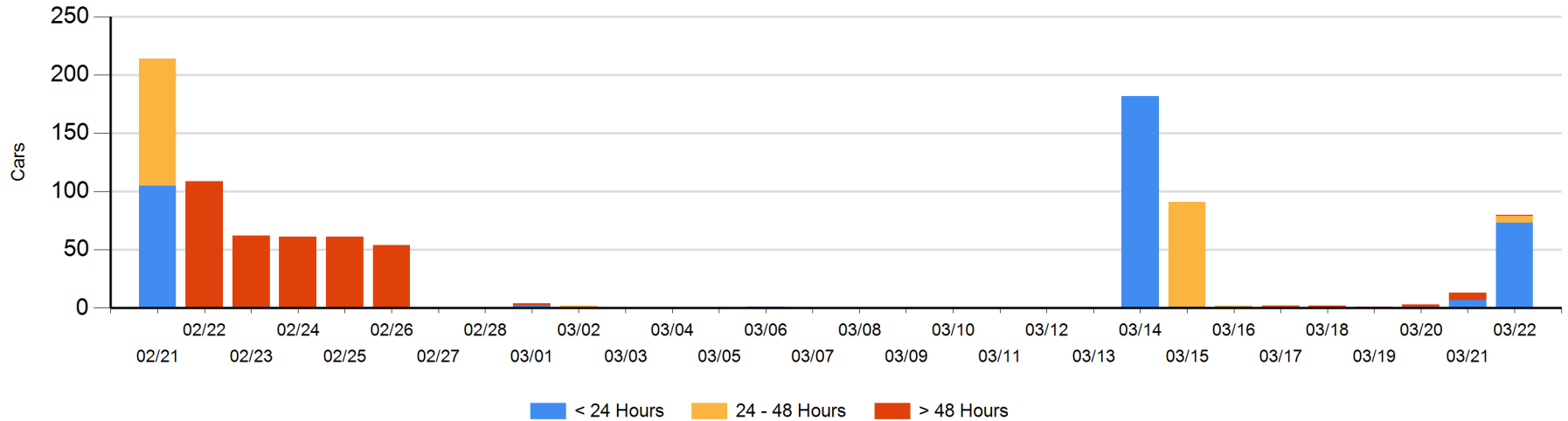
**Today**

	< 24 Hrs	24 - 48 Hrs	> 48-72 Hrs	> 72 Hrs	Total On Hand
CN	73	6		1	80

**Change in Last 24 Hours**

	< 24 Hrs	24-48 Hrs	48 - 72 Hrs	> 72 Hrs
CN	66	6		-5

Loaded Cars on Hand Prince Rupert Waiting for Placement - Last 30 Days All Railways



**Port Terminal Status**

**Thunder Bay**

Daily Activity for 3/22/2018

	Cars Arrived	Cars Received in Interchange	Cars Delivered in Interchange	Cars Placed for Unloading	Loads on Wheels at Destination As of 3/22/2018
CN	99			99	71
CP					

**Port Unloads**

	03/22	03/21	Week To Date	Last Week
CN	30		30	90
CP		2	14	3

**Age Profile of Loaded Cars Waiting Placement for Unloading**

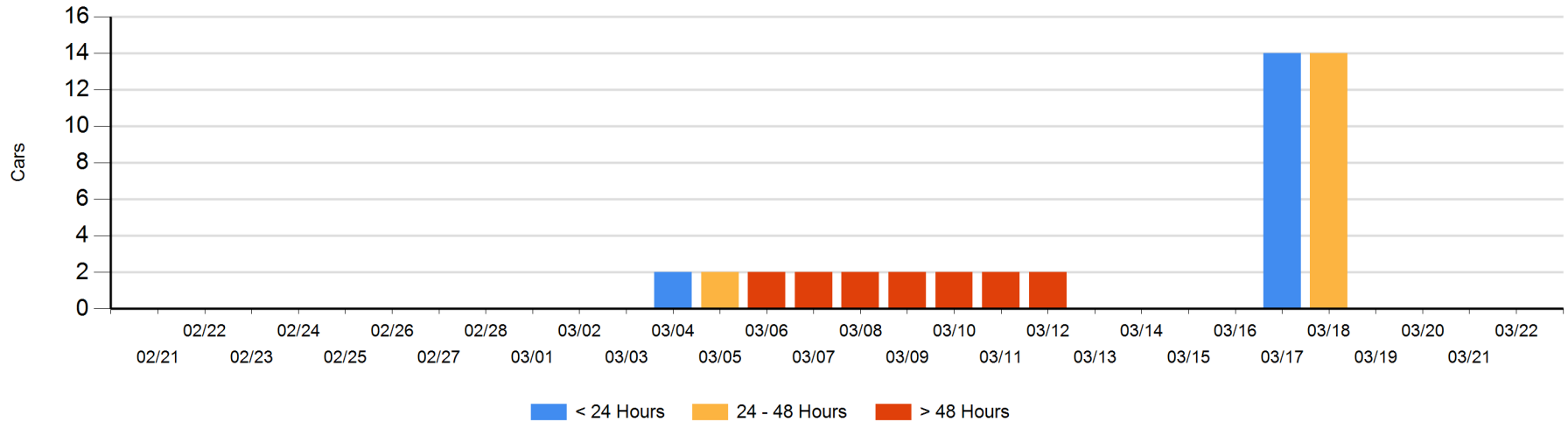
**Today**

	< 24 Hrs	24 - 48 Hrs	> 48-72 Hrs	> 72 Hrs	Total On Hand
CN					0
CP					0

**Change in Last 24 Hours**

	< 24 Hrs	24-48 Hrs	48 - 72 Hrs	> 72 Hrs
CN				
CP				

**Loaded Cars on Hand Thunder Bay Waiting for Placement - Last 30 Days All Railways**



## Measurement Definitions

Loads on Wheels	<p>Count of loaded rail cars including all rail cars that have been released loaded at origin and have not been reported by the railway as unloaded at destination.</p> <p>Counts include all rail cars (hopper cars and boxcars) moving within a pipeline.</p>
Loads Not Moving	<p>Loaded rail cars for which the railways have not reported a movement event for 48 hours or more whether the rail car is at origin, enroute or at destination.</p>
Port Unloads	<p>Count of rail cars reported by railways as unloaded at the western port destinations of Vancouver, Prince Rupert and Thunder Bay.</p> <p>Unload counts include all rail cars (hopper cars and boxcars) unloaded by all receivers including major port terminals, transloaders and other receivers.</p>
Cars Arrived	<p>Count of rail cars reported as arrived at the destination railway terminal.</p>
Cars Received in Interchange	<p>Count of rail cars received in interchange by each railway within a destination railway terminal. Interchange activity is tracked for the Vancouver and Thunder Bay pipelines as applicable.</p>
Cars Delivered in Interchange	<p>Count of rail cars delivered in interchange by each railway within a destination railway terminal. Interchange activity is tracked for the Vancouver and Thunder Bay pipelines as applicable.</p>
Cars Placed for Unloading	<p>Count of rail cars reported by the railways as placed loaded at the receiver's facility for unloading.</p>
Loads on Wheels at Destination	<p>Count of rail cars that remain under load within the destination railway terminal including rail cars that have been reported as placed for unloading but not yet reported as unloaded.</p>
Waiting Placement for Unloading	<p>Count of rail cars that have been reported as arrived at the destination railway terminal but not reported as placed for unloading by the railway.</p> <p>For the Ports of Vancouver, Prince Rupert and Thunder Bay the count of rail cars waiting placement for unloading is categorized by age – i.e. the elapsed time from arrival at destination to the current report date.</p>