

## Loads on Wheels

- Loads on wheels increased 3% (308 cars) overnight rising for the second consecutive day following declining volumes in 3 of the prior 4 days - loads on wheels now at 10,837 - 4% above the trailing 30 day average
- The decline in loads on wheels reflects little change on CN and higher volumes on CP (+234).
- CN volumes reflect little net change however volumes in the E Canada corridor rose (+162) offset by a decline in the Prince Rupert corridor (-153). System wide CN loads on wheels now at 4,991 - 4% below the trailing 30 day average.
- The increase in CP volumes reflects increases in the US (+154) and Thunder Bay (+169) corridors offset by a decline in Vancouver traffic (-84). CP system wide loads on wheels now at 5,397 - the highest level in the last 30 days and 13% above the trailing 30 day average.
- Vancouver now at 5,870 - below the 6,000 car threshold for the 3rd consecutive day and falling 13% below the trailing 30 day average.
- The Prince Rupert pipeline currently sits at 1,306 - now 7% above the trailing 30 day average.
- Thunder Bay volumes increased for the 7th consecutive day and are now above 1,100 with 75% of traffic moving on CP. The volume of traffic moving to Thunder Bay continues to increase in preparation for the opening of the Seaway. CN and CP have accepted nearly 2,200 orders to Thunder Bay in weeks 34/35 combined, as such it is expected that volumes in this corridor should increase steadily throughout the week.

## Hopper Car Rationing

- CN rationed more than 700 orders in week 33 and early indications are that rationing is continuing in both weeks 34 and 35.

## Loads Not Moving

- The count of cars not moving for 48+ hours on CN and CP increased slightly overnight reflecting an increase on CN and a slight decrease on CP. The count of idle cars now stands at 2,707 - remaining at levels seen 10 days ago. Over the last four days CP counts have declined 16% while CN counts have risen 57%. Total idle cars for both railways remain above the 2,400 car mark for the 15th consecutive day.
- CN
  - The count of idle cars increased by 140 cars in the prior 24 hours - idle cars on CN now at 655 - returning to levels of 7 days ago and marking 3 consecutive days of increase.
  - The number of cars idle for 4+ days was unchanged overnight and remains above the 150 car mark.
  - The count of cars not moving for 7+ days was unchanged overnight - remains below 100 cars.
  - Approximately 27% of all idle cars are currently dwelling at origin.
- CP
  - CP counts declined slightly (-59) overnight - idle cars now at 2,052- the lowest level seen in the last 6 days.
  - The number of cars idle for 4+ days declined slightly overnight yet remains near 1,300 cars effectively at the same level as 7 days ago.
  - The count of cars idle for 7+ days increased slightly overnight - now above 500 cars for the 3rd consecutive day and 60% higher than 7 days ago.
  - Vancouver continues to account for the majority of idle cars (71%) with 80% of all idle cars dwelling at origin locations - as has been the case for much of the past 30 days.

## Port Performance

- CN and CP reported 957 cars unloaded at the three western ports - week 34 unloads at 6,700 were some 525 unloads lower than the prior week reflecting 150 more unloads at Prince Rupert and some 700 fewer unloads at Vancouver as compared to the prior week.
- Vancouver

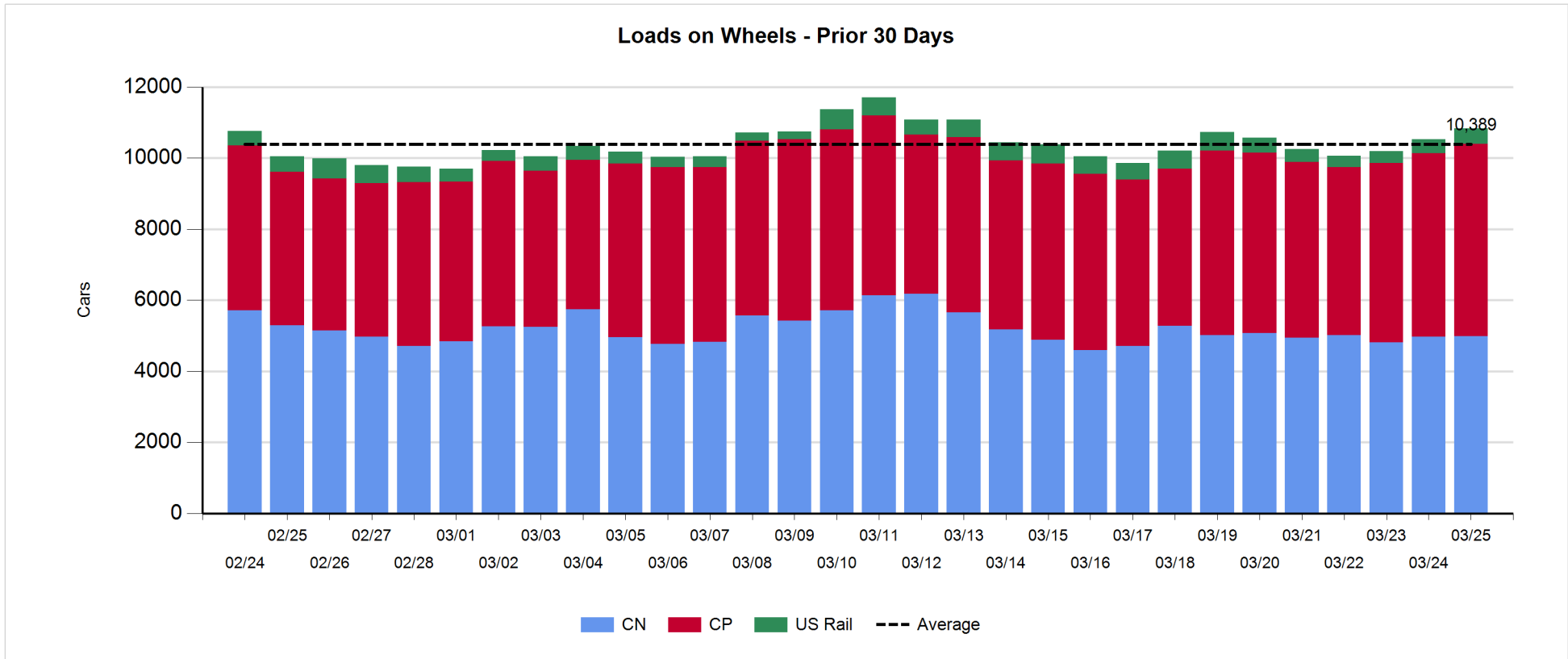
- 804 cars reported unloaded by CN and CP at the Port of Vancouver; CN - 373 and CP - 431
- There are 800 cars on hand at Vancouver waiting placement for unloading - with 1,000+ cars arriving at the port in the last 24 hours.
- CN and CP have 800 cars enroute to Vancouver west of Alberta with 75% of cars currently moving on CP; 42% (2,400 cars) of all cars destined to Vancouver are currently at origin locations awaiting movement with 1,200 of these - 95% of which are situated on CP lines - not having moved for 48+ hours.
- Prince Rupert
  - Prince Rupert unloads in week 34 surpassed the prior week's total by some 150 unloads finishing the week at 1,360.
  - Loads on wheels have declined slightly overnight but remain above 1,300.
  - There are currently less than 100 cars west of Jasper - destined to Prince Rupert however 300+ cars arrived at the Port yesterday which should support unload activity for the next few days.

**Daily Loads on Wheels - 3/25/2018**

	E Canada	Prince Rupert	Thunder Bay	USA/MEX	Vancouver	Total
CN	633	1,306	308	381	2,363	4,991
CP	467		809	681	3,440	5,397
Short Line	9				67	76
US Rail				373		373
	1,109	1,306	1,117	1,435	5,870	10,837

**Change in Loads on Wheels - Prior 24 Hours**

	E Canada	Prince Rupert	Thunder Bay	USA/MEX	Vancouver	Total
CN	162	-153	1	-63	67	14
CP	-5		169	154	-84	234
Short Line	3				11	14
US Rail				46		46
	160	-153	170	137	-6	308

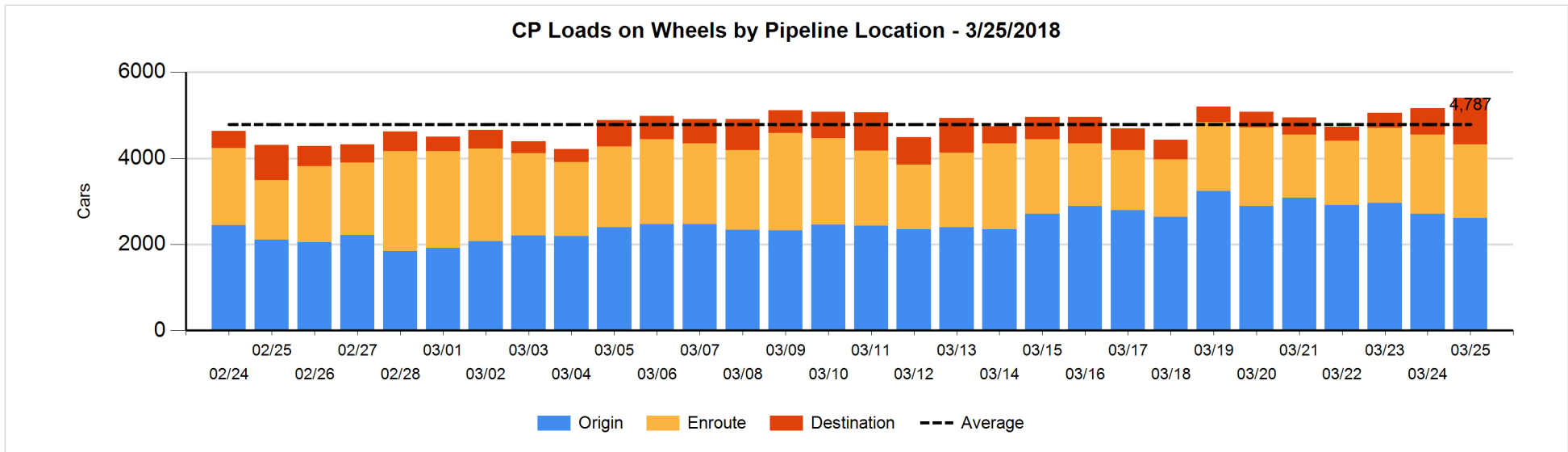
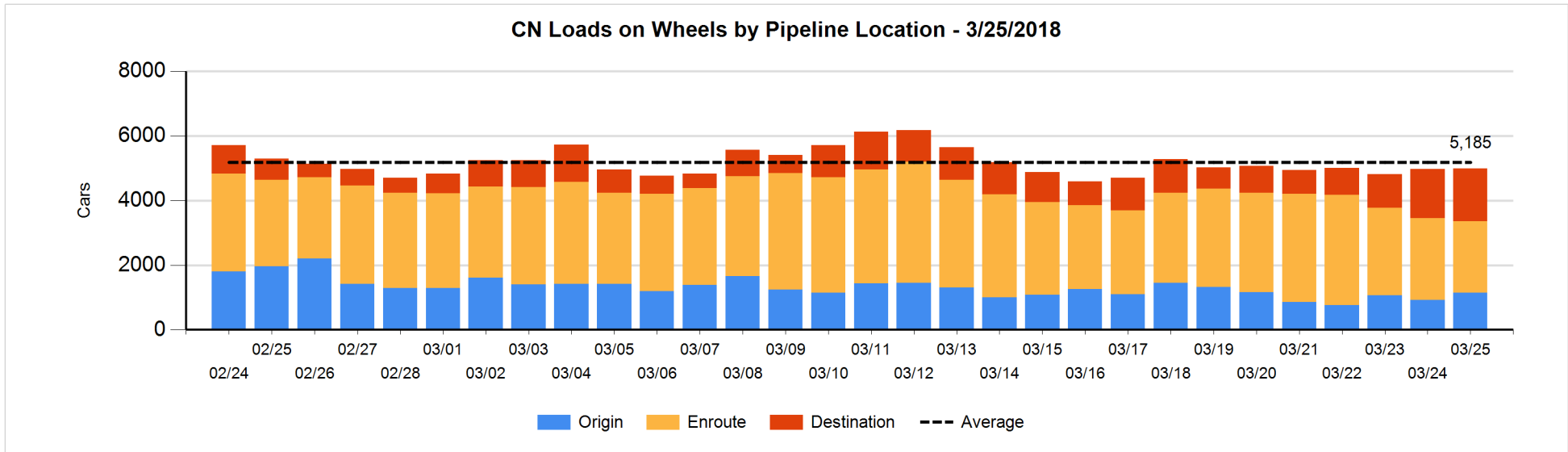


**Daily Loads on Wheels By Pipeline Location - 3/25/2018**

	E Canada	Prince Rupert	Thunder Bay	USA/MEX	Vancouver	Total
CN						
Origin	148	141	99	24	726	1,138
Enroute	391	495	98	275	963	2,222
Destination	94	670	111	82	674	1,631
	633	1,306	308	381	2,363	4,991
CP						
Origin	332		351	196	1,736	2,615
Enroute	132		29	459	1,091	1,711
Destination	3		429	26	613	1,071
	467		809	681	3,440	5,397
US Rail / Short Line						
Origin						
Enroute	6			243		249
Destination	3			130	67	200
	9			373	67	449

**Change in Daily Loads on Wheels By Pipeline Location - Prior 24 Hours**

	E Canada	Prince Rupert	Thunder Bay	USA/MEX	Vancouver	Total
CN						
Origin	99	-122	1	-25	267	220
Enroute	67	-176	0	-74	-127	-310
Destination	-4	145	0	36	-73	104
	162	-153	1	-63	67	14
CP						
Origin	-18		141	-44	-171	-92
Enroute	13		-169	198	-174	-132
Destination	0		197	0	261	458
	-5		169	154	-84	234
US Rail / Short Line						
Origin						
Enroute	3			37		40
Destination	0			9	11	20
	3			46	11	60

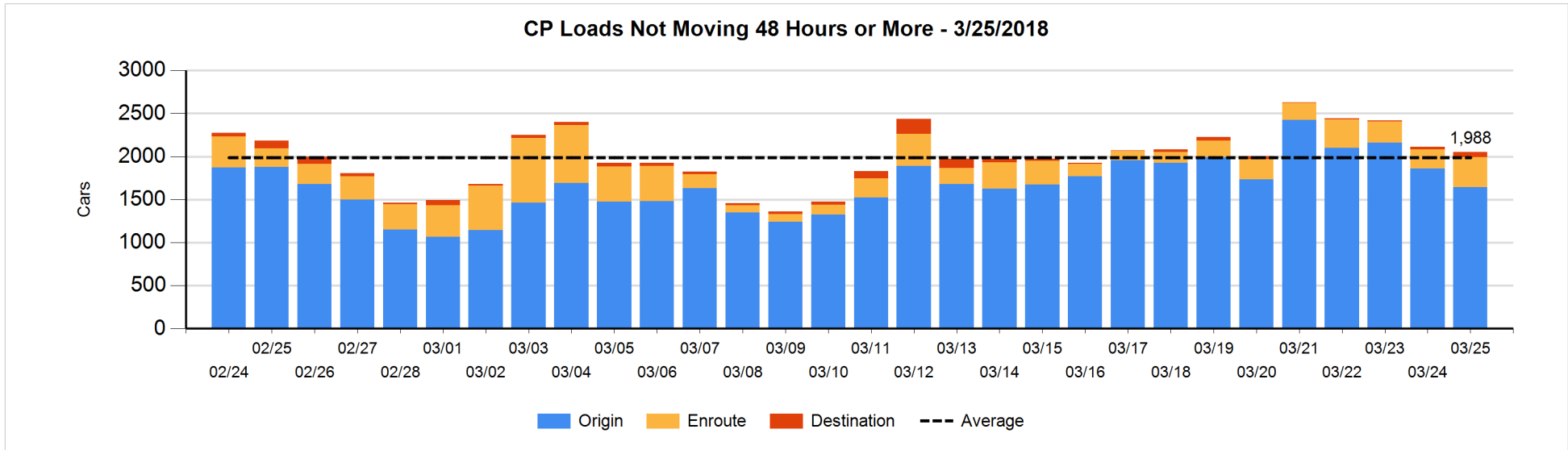
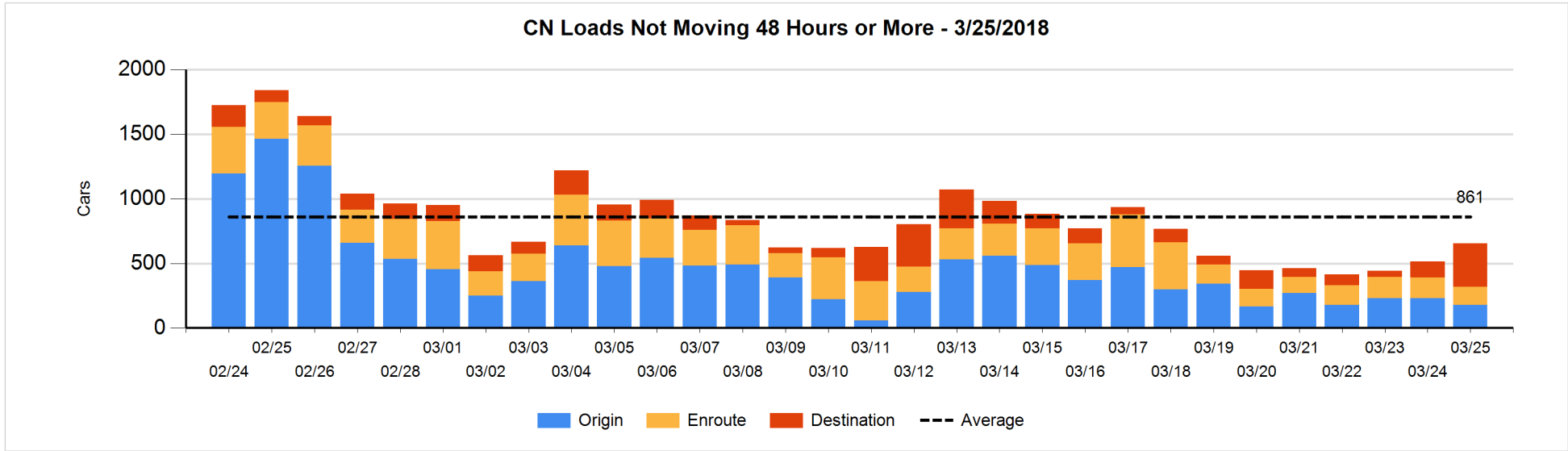


**Loads Not Moving 48 Hours or More - 3/25/2018**

	E Canada	Prince Rupert	Thunder Bay	USA/MEX	Vancouver	Total
CN						
Origin	49	46		24	59	178
Enroute	39	48		28	24	139
Destination	27	231	15	22	43	338
	115	325	15	74	126	655
CP						
Origin	282		133	41	1190	1646
Enroute	2		1	107	235	345
Destination	1			23	37	61
	285		134	171	1462	2052
US Rail / Short Line						
Origin						
Enroute	1			43		44
Destination	1			44	35	80
	2			87	35	124

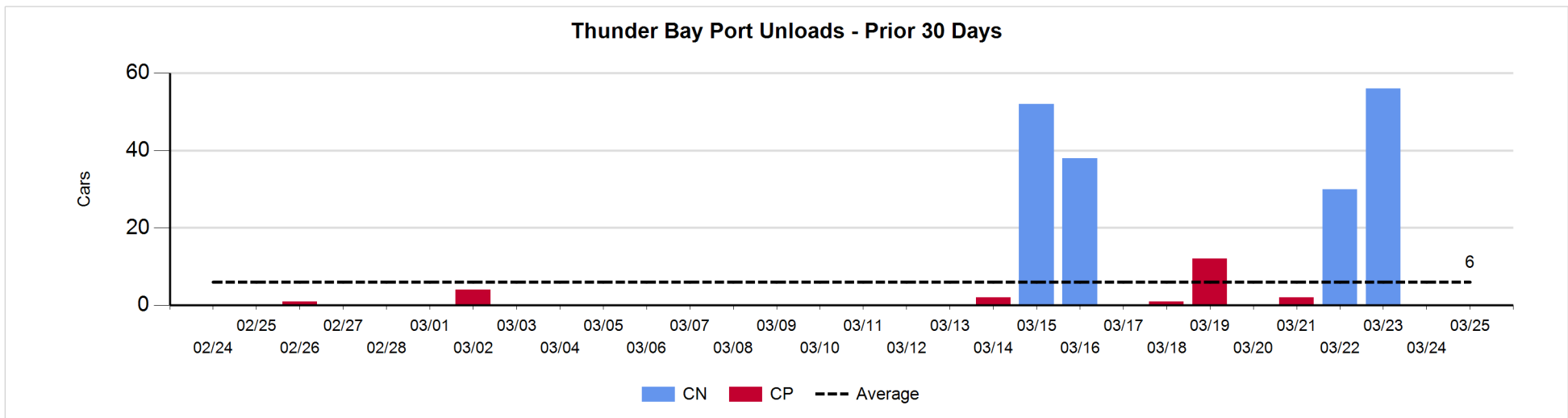
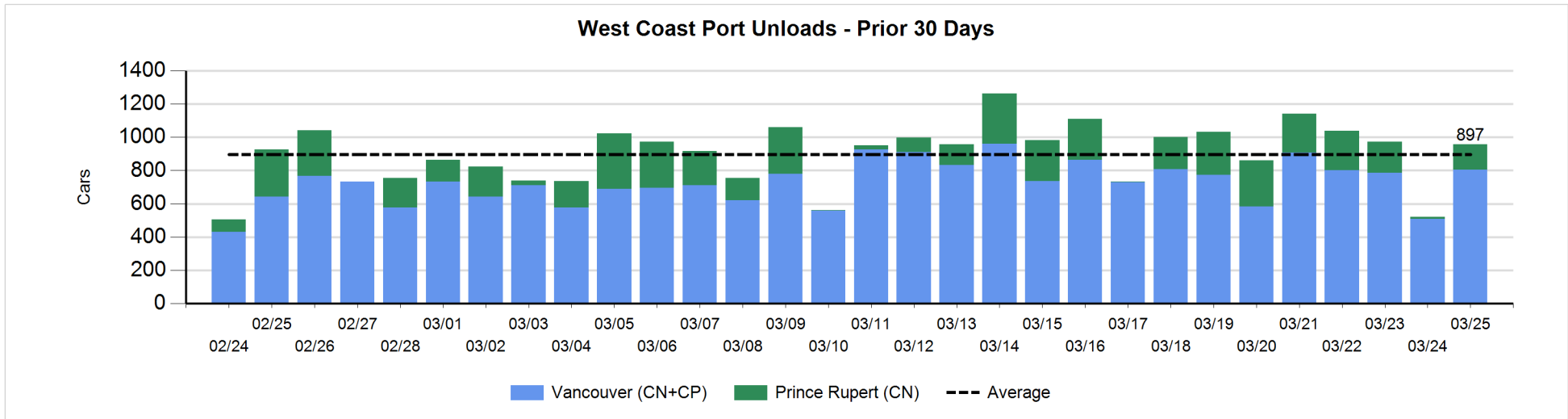
**Change in Loads Not Moving 48 Hours or More - 3/25/2018**

	E Canada	Prince Rupert	Thunder Bay	USA/MEX	Vancouver	Total
CN						
Origin	0	-21		1	-32	-52
Enroute	-54	40		-2	-7	-23
Destination	9	203	0	3	0	215
	-45	222	0	2	-39	140
CP						
Origin	166		24	-199	-205	-214
Enroute	-1		-3	28	101	125
Destination	0			0	30	30
	165		21	-171	-74	-59
US Rail / Short Line						
Origin						
Enroute	0			-18		-18
Destination	0			5	-13	-8
	0			-13	-13	-26



**Port Unloads - 3/25/2018**

	Prince Rupert	Vancouver	West Coast Total	Thunder Bay	Total
CN	153	373	526		526
CP		431	431		431
	153	804	957		957





**Port Terminal Status**

**Vancouver**

Daily Activity for 3/25/2018

	Cars Arrived	Cars Received in Interchange	Cars Delivered in Interchange	Cars Placed for Unloading	Loads on Wheels at Destination As of 3/25/2018
CN	293	9	136	260	674
CP	711	136	39	606	613
SRY	1	30		7	67

**Port Unloads**

	03/25	03/24	Week To Date	Last Week
CN	373	172	2,599	3,106
CP	431	337	2,566	2,740
SRY	9	2	73	84

**Age Profile of Loaded Cars Waiting Placement for Unloading**

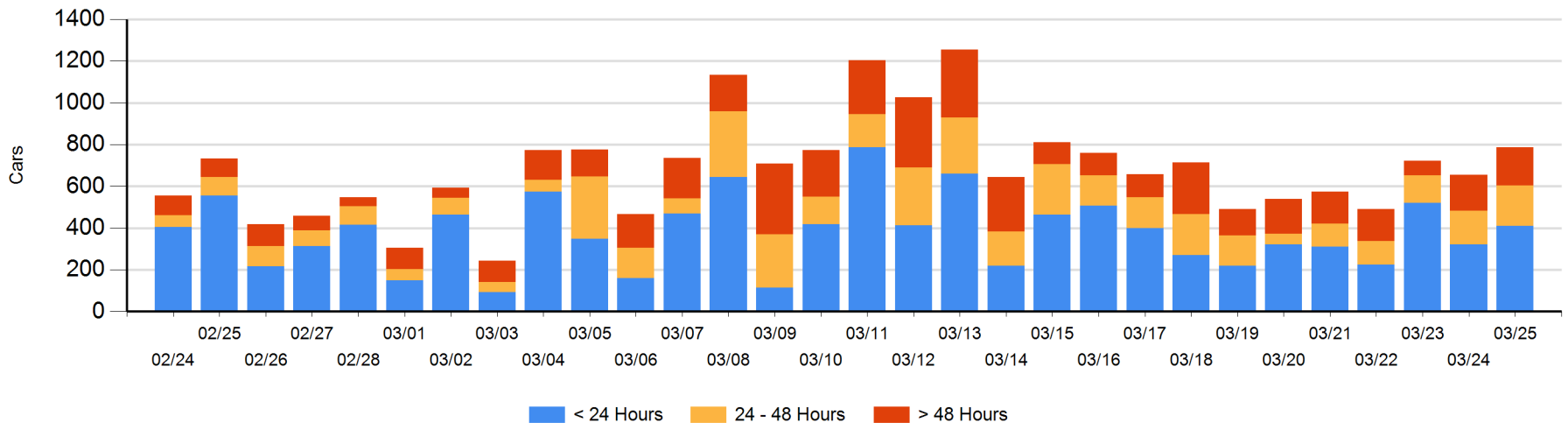
**Today**

	< 24 Hrs	24 - 48 Hrs	> 48-72 Hrs	> 72 Hrs	Total On Hand
CN	180	121	44	79	424
CP	229	75	33	26	363
SRY					0

**Change in Last 24 Hours**

	< 24 Hrs	24-48 Hrs	48 - 72 Hrs	> 72 Hrs
CN	59	77	-63	42
CP	30	-44	33	-2
SRY				

**Loaded Cars on Hand Vancouver Waiting for Placement - Last 30 Days All Railways**



**Port Terminal Status**

**Prince Rupert**

Daily Activity for 3/25/2018

	Cars Arrived	Cars Received in Interchange	Cars Delivered in Interchange	Cars Placed for Unloading	Loads on Wheels at Destination As of 3/25/2018
CN	298			107	670

**Port Unloads**

	03/25	03/24	Week To Date	Last Week
CN	153	11	1,359	1,201

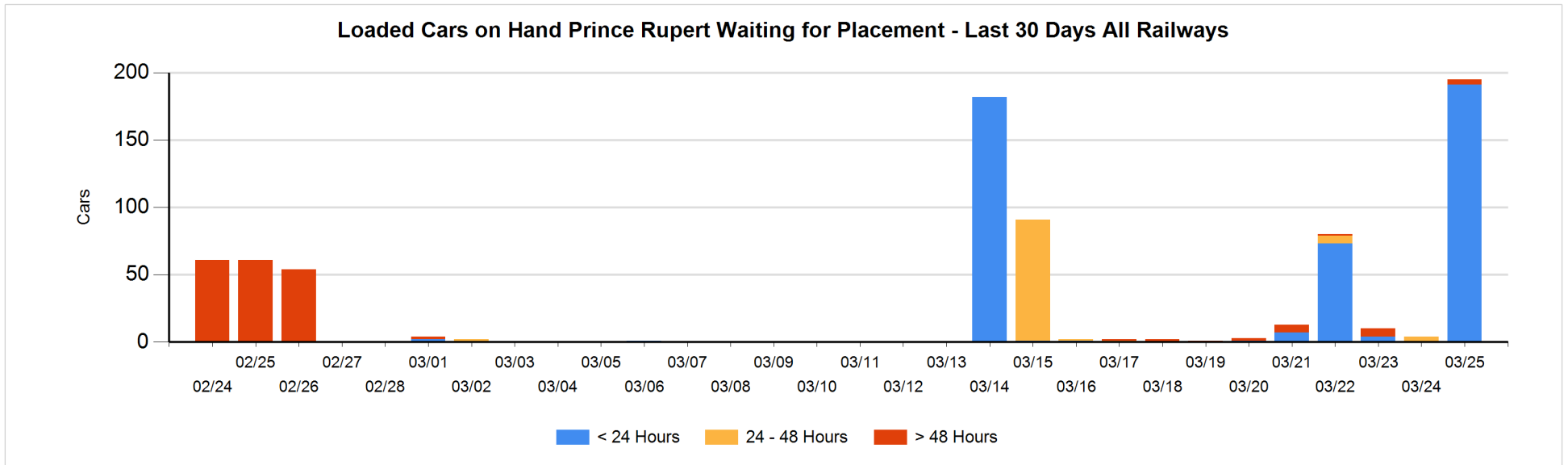
**Age Profile of Loaded Cars Waiting Placement for Unloading**

**Today**

	< 24 Hrs	24 - 48 Hrs	> 48-72 Hrs	> 72 Hrs	Total On Hand
CN	191		4		195

**Change in Last 24 Hours**

	< 24 Hrs	24-48 Hrs	48 - 72 Hrs	> 72 Hrs
CN	191	-4	4	



**Port Terminal Status**

**Thunder Bay**

Daily Activity for 3/25/2018

	Cars Arrived	Cars Received in Interchange	Cars Delivered in Interchange	Cars Placed for Unloading	Loads on Wheels at Destination As of 3/25/2018
CN					111
CP	197			182	429

**Port Unloads**

	03/25	03/24	Week To Date	Last Week
CN			86	90
CP			14	3

**Age Profile of Loaded Cars Waiting Placement for Unloading**

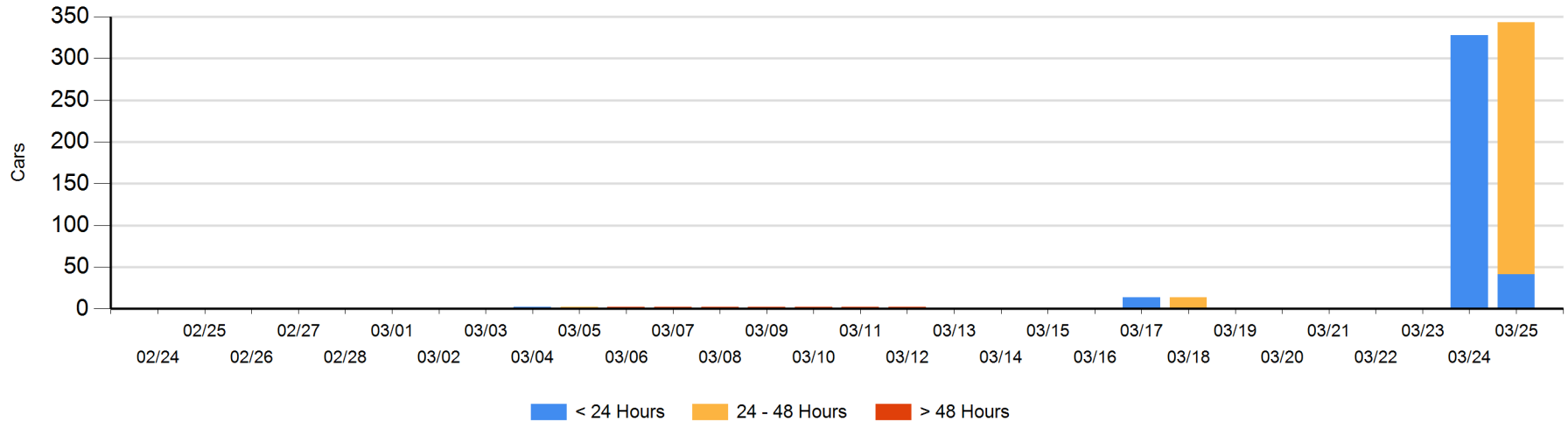
**Today**

	< 24 Hrs	24 - 48 Hrs	> 48-72 Hrs	> 72 Hrs	Total On Hand
CN		96			96
CP	41	206			247

**Change in Last 24 Hours**

	< 24 Hrs	24-48 Hrs	48 - 72 Hrs	> 72 Hrs
CN	-96	96		
CP	-191	206		

**Loaded Cars on Hand Thunder Bay Waiting for Placement - Last 30 Days All Railways**



## Measurement Definitions

Loads on Wheels	<p>Count of loaded rail cars including all rail cars that have been released loaded at origin and have not been reported by the railway as unloaded at destination.</p> <p>Counts include all rail cars (hopper cars and boxcars) moving within a pipeline.</p>
Loads Not Moving	<p>Loaded rail cars for which the railways have not reported a movement event for 48 hours or more whether the rail car is at origin, enroute or at destination.</p>
Port Unloads	<p>Count of rail cars reported by railways as unloaded at the western port destinations of Vancouver, Prince Rupert and Thunder Bay.</p> <p>Unload counts include all rail cars (hopper cars and boxcars) unloaded by all receivers including major port terminals, transloaders and other receivers.</p>
Cars Arrived	<p>Count of rail cars reported as arrived at the destination railway terminal.</p>
Cars Received in Interchange	<p>Count of rail cars received in interchange by each railway within a destination railway terminal. Interchange activity is tracked for the Vancouver and Thunder Bay pipelines as applicable.</p>
Cars Delivered in Interchange	<p>Count of rail cars delivered in interchange by each railway within a destination railway terminal. Interchange activity is tracked for the Vancouver and Thunder Bay pipelines as applicable.</p>
Cars Placed for Unloading	<p>Count of rail cars reported by the railways as placed loaded at the receiver's facility for unloading.</p>
Loads on Wheels at Destination	<p>Count of rail cars that remain under load within the destination railway terminal including rail cars that have been reported as placed for unloading but not yet reported as unloaded.</p>
Waiting Placement for Unloading	<p>Count of rail cars that have been reported as arrived at the destination railway terminal but not reported as placed for unloading by the railway.</p> <p>For the Ports of Vancouver, Prince Rupert and Thunder Bay the count of rail cars waiting placement for unloading is categorized by age – i.e. the elapsed time from arrival at destination to the current report date.</p>