

SPEED READ

- Loads on wheels declined for the fourth consecutive day reflecting lower volumes on CN and little change on CP. Loads on wheels have declined 17% - nearly 1,700 cars - in the last four days reaching their lowest levels in more than 30 days. More than 75% of this decline is attributable to lower traffic volumes in the Vancouver corridor for both CN and CP
- It is anticipated that CN volumes will continue to decline this week as week 43 hopper car orders fell to their lowest level since August of last year - below 3,000 cars. This is most evident in the Prince Rupert corridor where orders have fallen below 600 cars for week 43 - 40% lower than the 3 week trailing average.
- Network fluidity improved somewhat overnight for CN with little change seen on CP. Idle car counts now below 1,700 cars with 80%+ of all idle cars for both railways destined to Vancouver.
- Through the first two days of week 43 western port unloads are tracking slightly behind last week's pace reflecting lower unloads at Thunder Bay offset by higher unloads at Vancouver.

Loads on Wheels

- Loads on wheels declined for the fourth consecutive day falling 6% (488 cars) overnight - now at 8,194 - the lowest level in more than 30 days and 17% below the trailing 30 day average
- The change in loads on wheels reflects lower volumes on CN (-388) and little change on CP.
- On a net basis the decline in loads on wheels reflects lower volumes principally in the Vancouver corridor with minor changes in all other corridors.
- CN volumes declined in four of five corridors led by Vancouver (-255) . System wide CN loads on wheels now at 4,053 - the lowest level in more than 30 days and 15% below the trailing 30 day average.
- CP volumes were largely unchanged in total reflecting lower Vancouver traffic levels offset by an increase in US destined traffic. CP system wide loads on wheels now at 3,782 - below the 4,000 car threshold for the second consecutive day and 20% below the trailing 30 day average.
- Vancouver now at 4,635 - the lowest level in more than 30 days and 22% below the trailing 30 day average.
- The Prince Rupert pipeline currently sits at 1,107 - above the 1,100 car threshold for the fourth consecutive day and in line with the trailing 30 day average.
- Thunder Bay volumes down slightly falling just below the 1,000 car threshold - 22% below the trailing 30 day average - 60% of traffic moving on CP.

Hopper Car Rationing

- No hopper car rationing has been reported for either CN or CP in week 41.

Loads Not Moving

- **The count of cars not moving for 48+ hours declined by 10% (198 cars) reflecting a decline on CN and a slight increase on CP. The count of idle cars now stands at 1,665.**
- CN
 - **The count of idle cars declined 25% (250 cars) marking the second consecutive day of reduced counts. Idle car counts now at 740.**
 - The number of cars idle for 4+ days up slightly overnight - remains above 350 cars.
 - The count of cars not moving for 7+ days down overnight - remains just above 100 cars.
 - Vancouver represents 73% of all idle cars.

- CP
 - **CP counts rose slightly (52 cars) overnight. The count of idle cars on CP now at 925.**
 - The number of cars idle for 4+ days up 20% overnight - now above 350 cars.
 - The count of cars idle for 7+ days up slightly - now above 50 cars.
 - Vancouver continues to account for the majority of all idle cars (84%).
 - In total only 40% of all idle cars are dwelling at origin locations.

Port Performance

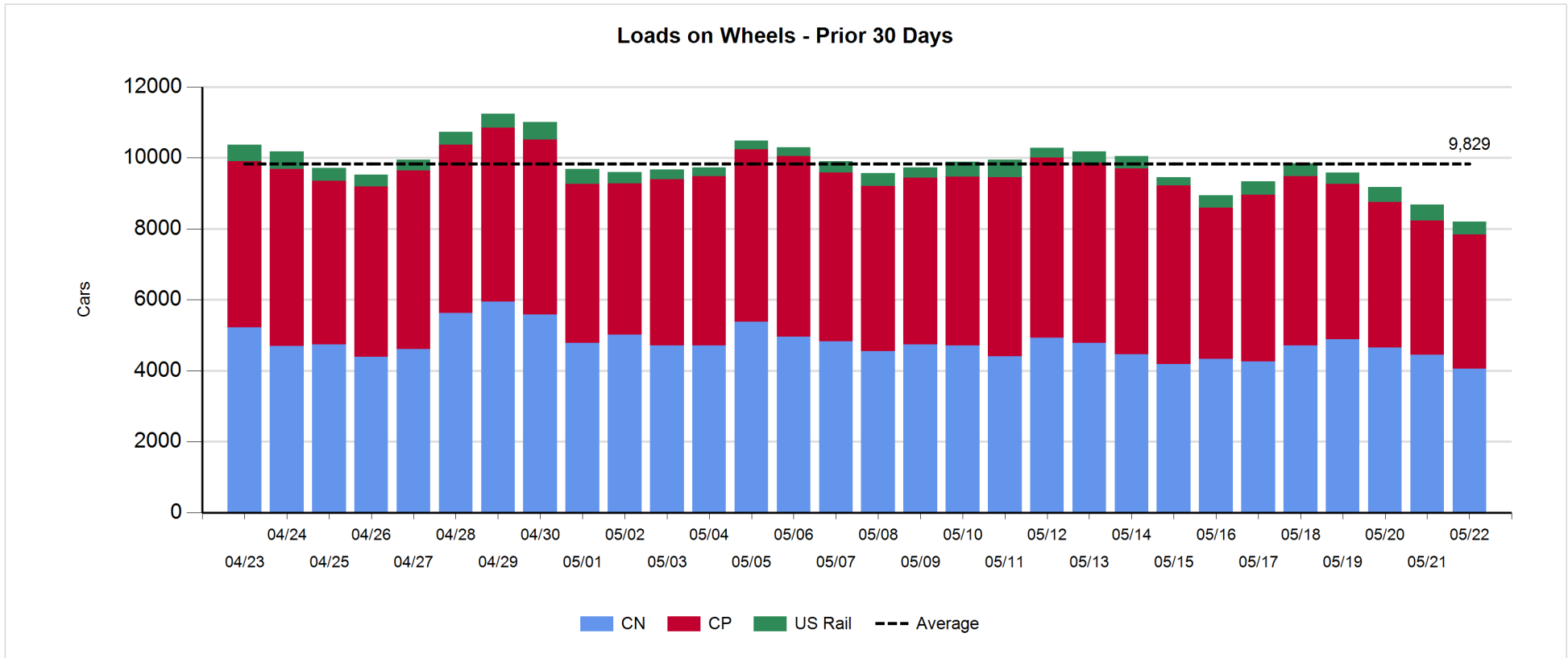
- CN and CP reported a total of 1,226 cars unloaded at the three western ports. Two days in to week 43 port unloads are trailing last week's pace slightly driven primarily by lower unloads at Thunder Bay.
- Vancouver
 - 813 cars reported unloaded by CN and CP at the Port of Vancouver; CN - 484 and CP - 329.
 - There are nearly 1,100 cars on hand at Vancouver waiting placement for unloading - with 850+ cars arriving at the port in the last 24 hours.
 - CN and CP have 1,000+ cars enroute to Vancouver west of Alberta - 850+ Kamloops and west - with traffic split evenly between the railways.
- Prince Rupert
 - Prince Rupert unloads once again below 200 and currently tracking at the same pace as last week.
 - Loads on wheels above 1,100 cars for the fourth consecutive day.
 - There are 250+ cars west of Jasper - nearly all west of Prince George.
 - Given the cars on hand and the location of cars enroute - assuming timely movement of inbound traffic it is expected that Rupert unloads should maintain at this pace given the reduced unload capacity due to ongoing maintenance.
- Thunder Bay
 - 257 unloads reported by CN and CP yesterday - week 43 unloads currently trailing last week's pace by more than 200 unloads.
 - There are currently 450+ cars on hand waiting placement for unload with only 130 cars arriving at the Port in the last 24 hours.
 - There are 350+ cars enroute to Thunder Bay - less than half of which are Winnipeg and east.
 - Given the ample cars on hand at the Port and the status of the inbound pipeline we would expect to see continued strong unloading performance in the coming days.

Daily Loads on Wheels - 5/22/2018

	E Canada	Prince Rupert	Thunder Bay	USA/MEX	Vancouver	Total
CN	395	1,107	336	74	2,141	4,053
CP	142		656	535	2,449	3,782
Short Line	11				45	56
US Rail				303		303
	548	1,107	992	912	4,635	8,194

Change in Loads on Wheels - Prior 24 Hours

	E Canada	Prince Rupert	Thunder Bay	USA/MEX	Vancouver	Total
CN	7	-51	-74	-15	-255	-388
CP	6		40	128	-179	-5
Short Line	-19				28	9
US Rail				-104		-104
	-6	-51	-34	9	-406	-488

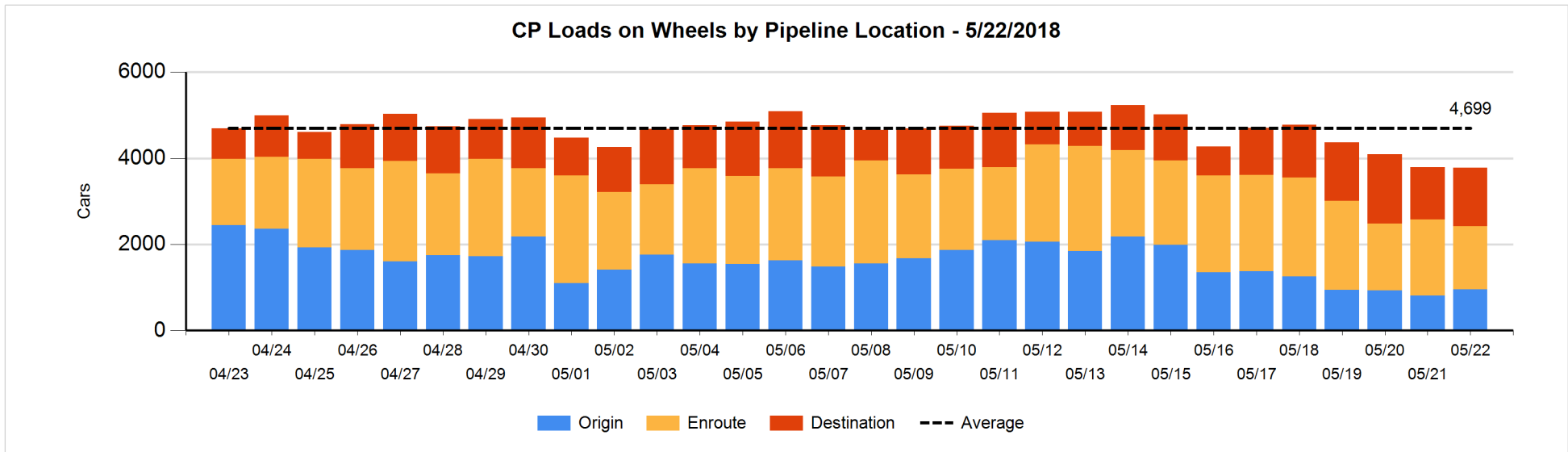
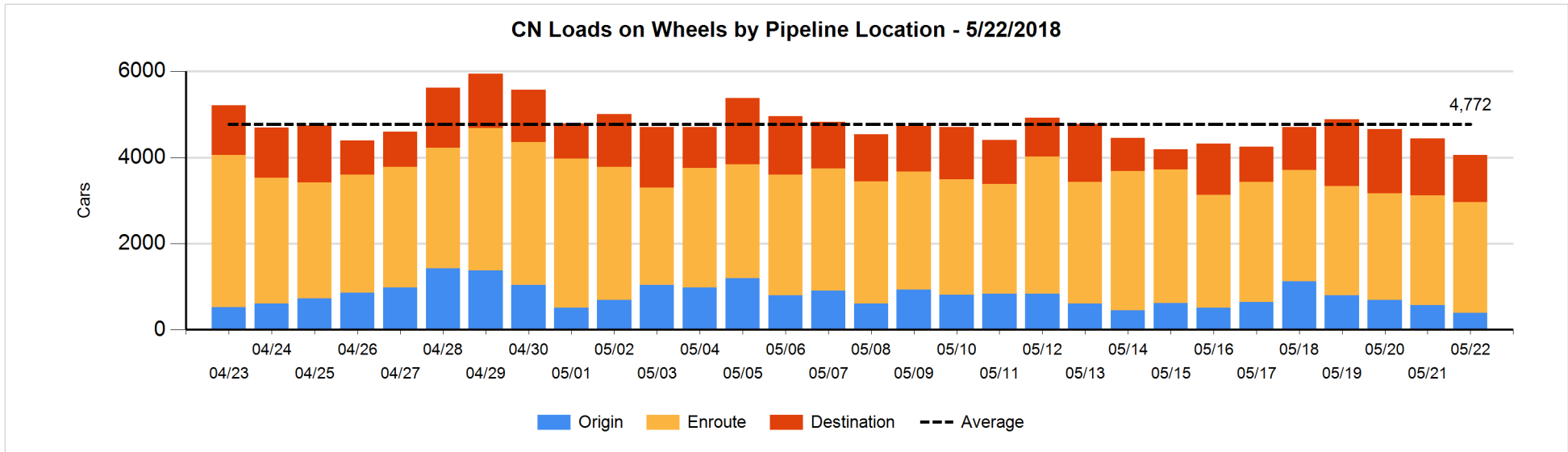


Daily Loads on Wheels By Pipeline Location - 5/22/2018

	E Canada	Prince Rupert	Thunder Bay	USA/MEX	Vancouver	Total
CN						
Origin	3	105		6	277	391
Enroute	293	710	247	63	1,255	2,568
Destination	99	292	89	5	609	1,094
	395	1,107	336	74	2,141	4,053
CP						
Origin	114		19	169	652	954
Enroute	25		117	315	1,006	1,463
Destination	3		520	51	791	1,365
	142		656	535	2,449	3,782
US Rail / Short Line						
Origin						
Enroute	1			212		213
Destination	10			91	45	146
	11			303	45	359

Change in Daily Loads on Wheels By Pipeline Location - Prior 24 Hours

	E Canada	Prince Rupert	Thunder Bay	USA/MEX	Vancouver	Total
CN						
Origin	0	105		4	-283	-174
Enroute	2	-82	100	-19	16	17
Destination	5	-74	-174	0	12	-231
	7	-51	-74	-15	-255	-388
CP						
Origin	56		12	76	-4	140
Enroute	-51		-21	23	-251	-300
Destination	1		49	29	76	155
	6		40	128	-179	-5
US Rail / Short Line						
Origin						
Enroute	-1			-11		-12
Destination	-18			-93	28	-83
	-19			-104	28	-95

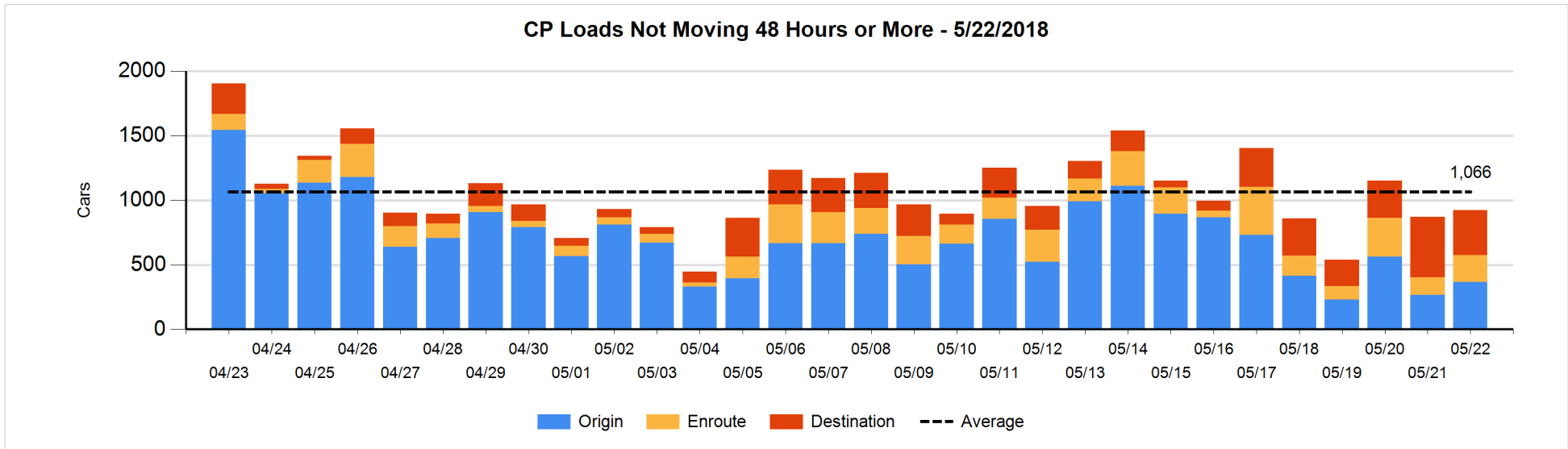
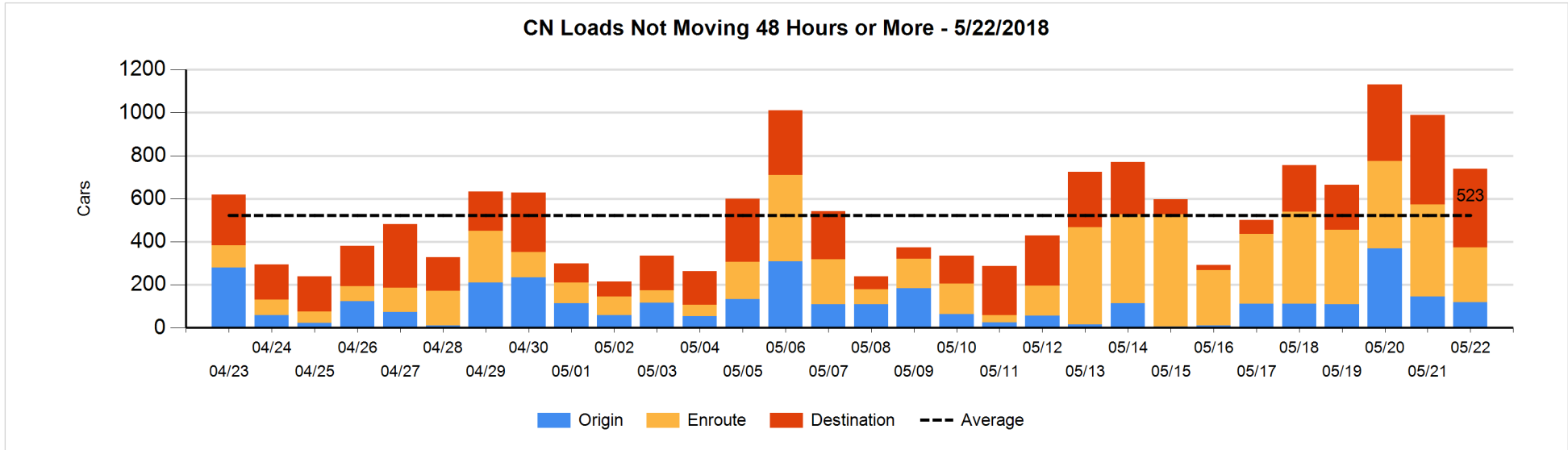


Loads Not Moving 48 Hours or More - 5/22/2018

	E Canada	Prince Rupert	Thunder Bay	USA/MEX	Vancouver	Total
CN						
Origin	3			1	115	119
Enroute	28	4	1	14	208	255
Destination	48	101	2	1	214	366
	79	105	3	16	537	740
CP						
Origin	56		7	44	260	367
Enroute	18		6	2	180	206
Destination	1			14	337	352
	75		13	60	777	925
US Rail / Short Line						
Origin						
Enroute	1			30		31
Destination				45	5	50
	1			75	5	81

Change in Loads Not Moving 48 Hours or More - 5/22/2018

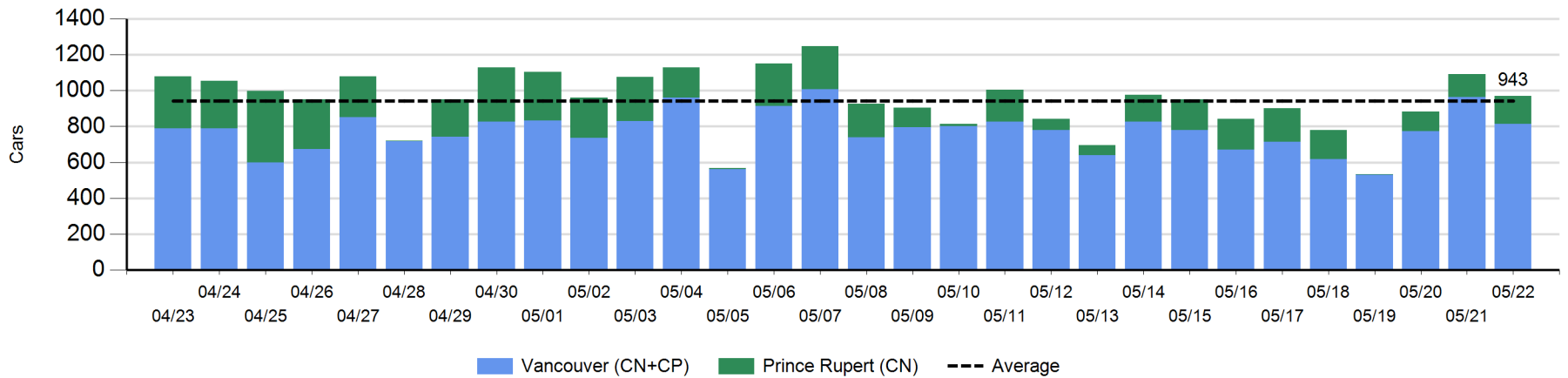
	E Canada	Prince Rupert	Thunder Bay	USA/MEX	Vancouver	Total
CN						
Origin	0			0	-26	-26
Enroute	1	-14	-1	1	-161	-174
Destination	25	1	1	0	-77	-50
	26	-13	0	1	-264	-250
CP						
Origin	-2		0	-23	125	100
Enroute	18		0	2	51	71
Destination	-1			-8	-110	-119
	15		0	-29	66	52
US Rail / Short Line						
Origin						
Enroute	0			-8		-8
Destination	-27			-16	-4	-47
	-27			-24	-4	-55



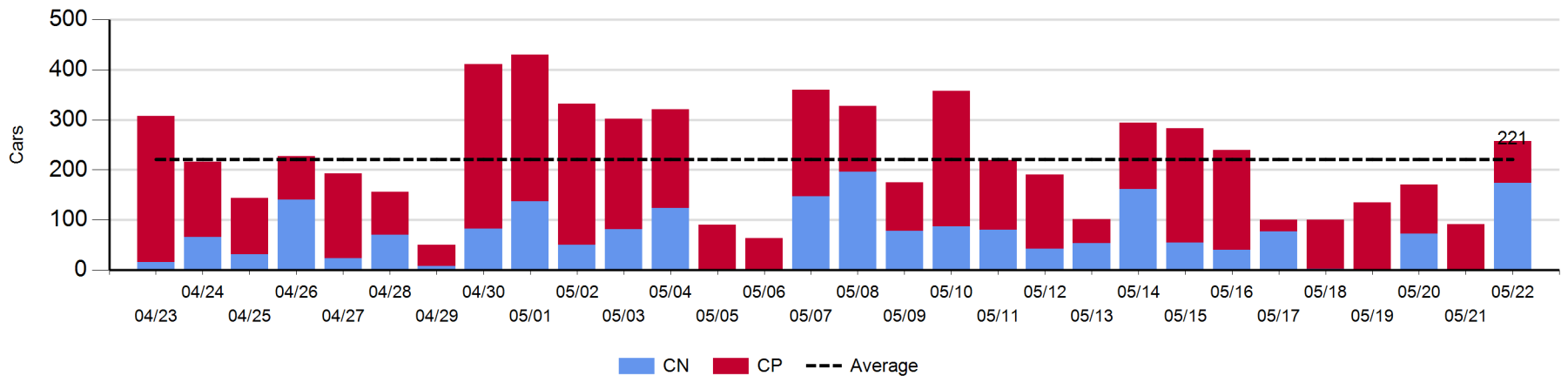
Port Unloads - 5/22/2018

	Prince Rupert	Vancouver	West Coast Total	Thunder Bay	Total
CN	156	484	640	174	814
CP		329	329	83	412
	156	813	969	257	1,226

West Coast Port Unloads - Prior 30 Days



Thunder Bay Port Unloads - Prior 30 Days



Port Terminal Status

Vancouver

Daily Activity for 5/22/2018

	Cars Arrived	Cars Received in Interchange	Cars Delivered in Interchange	Cars Placed for Unloading	Loads on Wheels at Destination As of 5/22/2018
CN	366	171	314	394	609
CP	489	285	182	345	791
SRY		40		5	45

Port Unloads

	05/22	05/21	Week To Date	Last Week
CN	484	478	962	2,264
CP	329	485	814	2,651
SRY	2	15	17	82

Age Profile of Loaded Cars Waiting Placement for Unloading

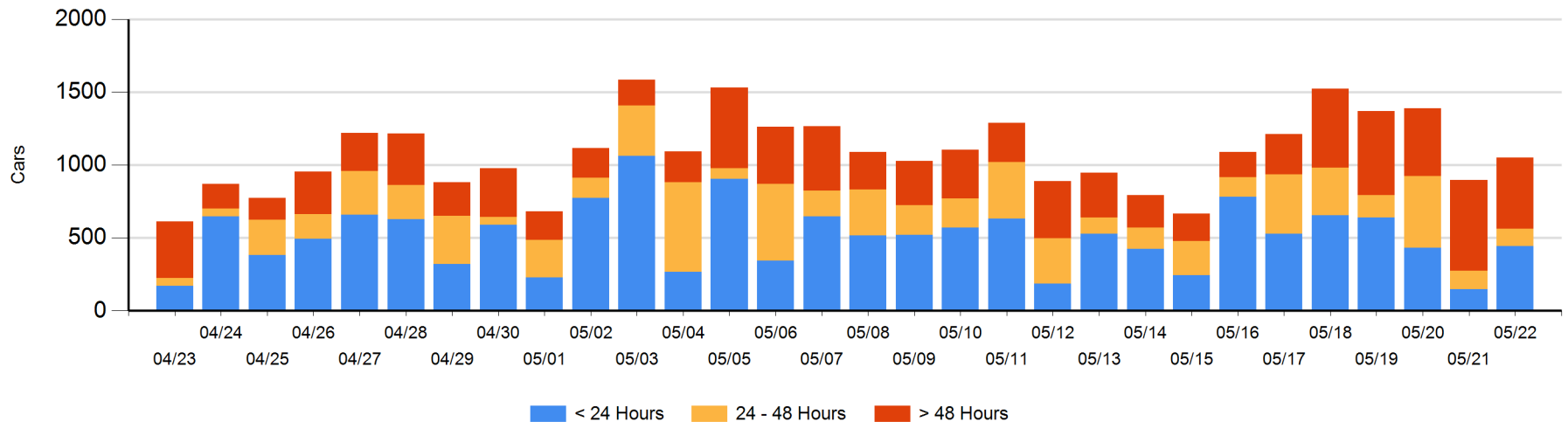
Today

	< 24 Hrs	24 - 48 Hrs	> 48-72 Hrs	> 72 Hrs	Total On Hand
CN	194	93	16	206	509
CP	249	28	54	210	541
SRY					0

Change in Last 24 Hours

	< 24 Hrs	24-48 Hrs	48 - 72 Hrs	> 72 Hrs
CN	73	34	-181	95
CP	235	-38	-87	34
SRY				

Loaded Cars on Hand Vancouver Waiting for Placement - Last 30 Days All Railways



Port Terminal Status

Prince Rupert

Daily Activity for 5/22/2018

	Cars Arrived	Cars Received in Interchange	Cars Delivered in Interchange	Cars Placed for Unloading	Loads on Wheels at Destination As of 5/22/2018
CN	41			58	292

Port Unloads

	05/22	05/21	Week To Date	Last Week
CN	156	130	286	950

Age Profile of Loaded Cars Waiting Placement for Unloading

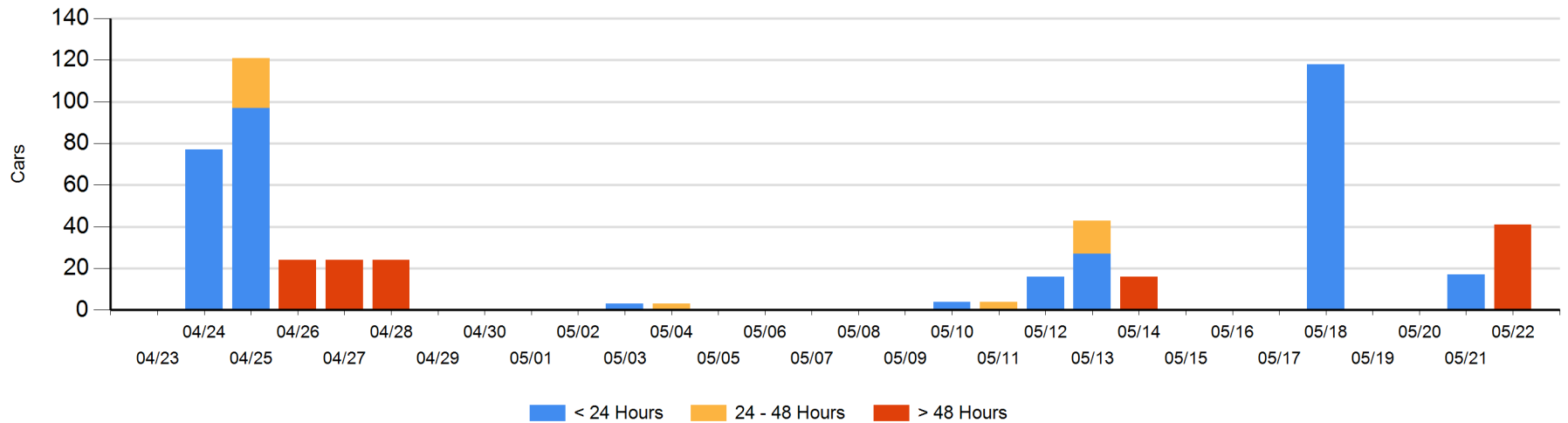
Today

	< 24 Hrs	24 - 48 Hrs	> 48-72 Hrs	> 72 Hrs	Total On Hand
CN			41		41

Change in Last 24 Hours

	< 24 Hrs	24-48 Hrs	48 - 72 Hrs	> 72 Hrs
CN	-17			41

Loaded Cars on Hand Prince Rupert Waiting for Placement - Last 30 Days All Railways



Port Terminal Status

Thunder Bay

Daily Activity for 5/22/2018

	Cars Arrived	Cars Received in Interchange	Cars Delivered in Interchange	Cars Placed for Unloading	Loads on Wheels at Destination As of 5/22/2018
CN				15	89
CP	132			172	520

Port Unloads

	05/22	05/21	Week To Date	Last Week
CN	174		174	408
CP	83	91	174	915

Age Profile of Loaded Cars Waiting Placement for Unloading

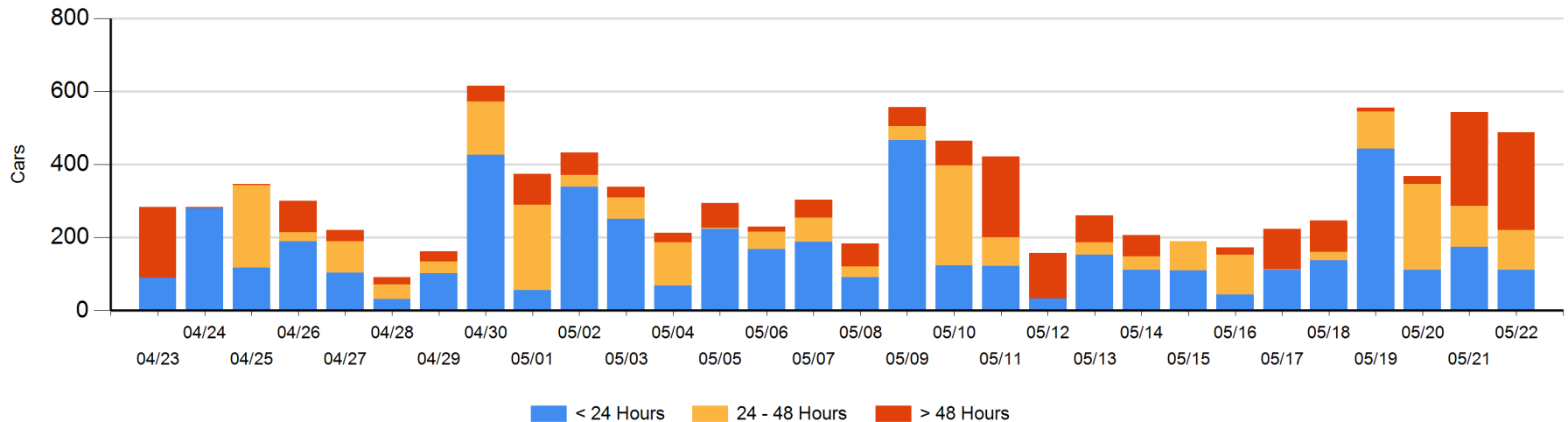
Today

	< 24 Hrs	24 - 48 Hrs	> 48-72 Hrs	> 72 Hrs	Total On Hand
CN		72			72
CP	111	37	112	156	416

Change in Last 24 Hours

	< 24 Hrs	24-48 Hrs	48 - 72 Hrs	> 72 Hrs
CN	-87	72		
CP	23	-75	-123	135

Loaded Cars on Hand Thunder Bay Waiting for Placement - Last 30 Days All Railways



Measurement Definitions

Loads on Wheels	<p>Count of loaded rail cars including all rail cars that have been released loaded at origin and have not been reported by the railway as unloaded at destination.</p> <p>Counts include all rail cars (hopper cars and boxcars) moving within a pipeline.</p>
Loads Not Moving	<p>Loaded rail cars for which the railways have not reported a movement event for 48 hours or more whether the rail car is at origin, enroute or at destination.</p>
Port Unloads	<p>Count of rail cars reported by railways as unloaded at the western port destinations of Vancouver, Prince Rupert and Thunder Bay.</p> <p>Unload counts include all rail cars (hopper cars and boxcars) unloaded by all receivers including major port terminals, transloaders and other receivers.</p>
Cars Arrived	<p>Count of rail cars reported as arrived at the destination railway terminal.</p>
Cars Received in Interchange	<p>Count of rail cars received in interchange by each railway within a destination railway terminal. Interchange activity is tracked for the Vancouver and Thunder Bay pipelines as applicable.</p>
Cars Delivered in Interchange	<p>Count of rail cars delivered in interchange by each railway within a destination railway terminal. Interchange activity is tracked for the Vancouver and Thunder Bay pipelines as applicable.</p>
Cars Placed for Unloading	<p>Count of rail cars reported by the railways as placed loaded at the receiver's facility for unloading.</p>
Loads on Wheels at Destination	<p>Count of rail cars that remain under load within the destination railway terminal including rail cars that have been reported as placed for unloading but not yet reported as unloaded.</p>
Waiting Placement for Unloading	<p>Count of rail cars that have been reported as arrived at the destination railway terminal but not reported as placed for unloading by the railway.</p> <p>For the Ports of Vancouver, Prince Rupert and Thunder Bay the count of rail cars waiting placement for unloading is categorized by age – i.e. the elapsed time from arrival at destination to the current report date.</p>