

### **Note to Reader**

CP announced yesterday that it has now reached tentative agreements with both unions resulting in workers returning to work Thursday May 31.

Prince Rupert unloads have been lower than normal for a number of weeks as a result of ongoing maintenance at the terminal which is reducing unload capacity. Over the prior 3 weeks unloads have averaged approximately 900 unloads per week in line with the expected levels given the reduced capacity.

### **SPEED READ**

- Loads on wheels rose slightly overnight with the increase attributable to increases seen on both CN and CP. While traffic levels rose for the first time in 5 days loads on wheels remain below the 8,000 car threshold for the fourth consecutive day.
- The count of loads on wheels is expected to begin to rise in the coming days most notably on CP as a result of the resolution of the labour disruption and the resumption of freight operations effective with Thursday morning. CN traffic levels however are thought to remain at similar levels in the coming days with CN order volumes totaling only 6,000 cars in the last 2 weeks.
- Network fluidity deteriorated somewhat overnight, most notably on CP where the count of idle cars nearly doubled overnight. The increase seen in the last 24 hours is likely a reflection of the 36 hour work stoppage that ended as of this morning. Counts may increase again over the next 24-48 hours as operations on CP resume however we would expect to see counts begin to decline again within 72 hours.
- Week 44 unloads now tracking behind last week's pace by some 250 unloads reflecting lower unloads at Vancouver and higher unloads at Prince Rupert and Thunder Bay. Based on the current structure of the three port pipelines it is expected that unloads may be challenged at all three port locations in the coming days with Vancouver and Thunder Bay in particular likely to see some short term impact as a result of the CP labour disruption.

=====

### **Loads on Wheels**

- Loads on wheels increased slightly (263 cars) overnight - now at 7,338 - remains below the 8,000 car threshold for the fourth consecutive day and 21% below the trailing 30 day average
- The change in loads on wheels reflects slightly higher volumes on both CN (+105) and CP (+171).
- On a net basis the increase in loads on wheels reflects principally higher volumes in the E Canada (+138) and Thunder Bay (+204) corridors.
- CN volumes increased nominally in all corridors other than Vancouver which declined nominally. System wide CN loads on wheels now at 3,092 - 31% below the trailing 30 day average.
- CP volumes increased in 3 of 4 corridors led by Thunder Bay (+141). CP system wide loads on wheels now at 3,872 - below the 4,000 car threshold for the tenth consecutive day and 22% below the trailing 30 day average.
- Vancouver now at 4,332 - 23% below the trailing 30 day average.
- The Prince Rupert pipeline currently sits at 592 - unchanged overnight and 39% below the trailing 30 day average.
- Thunder Bay volumes increased 27% overnight rising above 900 - 16% below the trailing 30 day average - with 70% of traffic currently on CP.

### **Hopper Car Rationing**

- No hopper car rationing has been reported for either CN or CP in week 43.

### **Loads Not Moving**

- **The count of cars not moving for 48+ hours rose 70% (495 cars) overnight reflecting increases on both CN and CP. The count of idle cars now**

**stands at 1,180.**

- CN
  - **The count of idle cars rose 38% overnight - idle car counts now at 346.**
  - The number of cars idle for 4+ days down slightly overnight - remains above 100 cars.
  - The count of cars not moving for 7+ days unchanged - remains below 50 cars.
  - Vancouver represents only 51% of all idle cars.
  
- CP
  - **CP counts increased 90% overnight. The count of idle cars on CP now at 834.**
  - The number of cars idle for 4+ days up 70% overnight - now above 350 cars.
  - The count of cars idle for 7+ days unchanged - remains below 100 cars.
  - Vancouver continues to account for the majority of all idle cars (77%).
  - In total 53% of all idle cars are dwelling at origin locations.

**Port Performance**

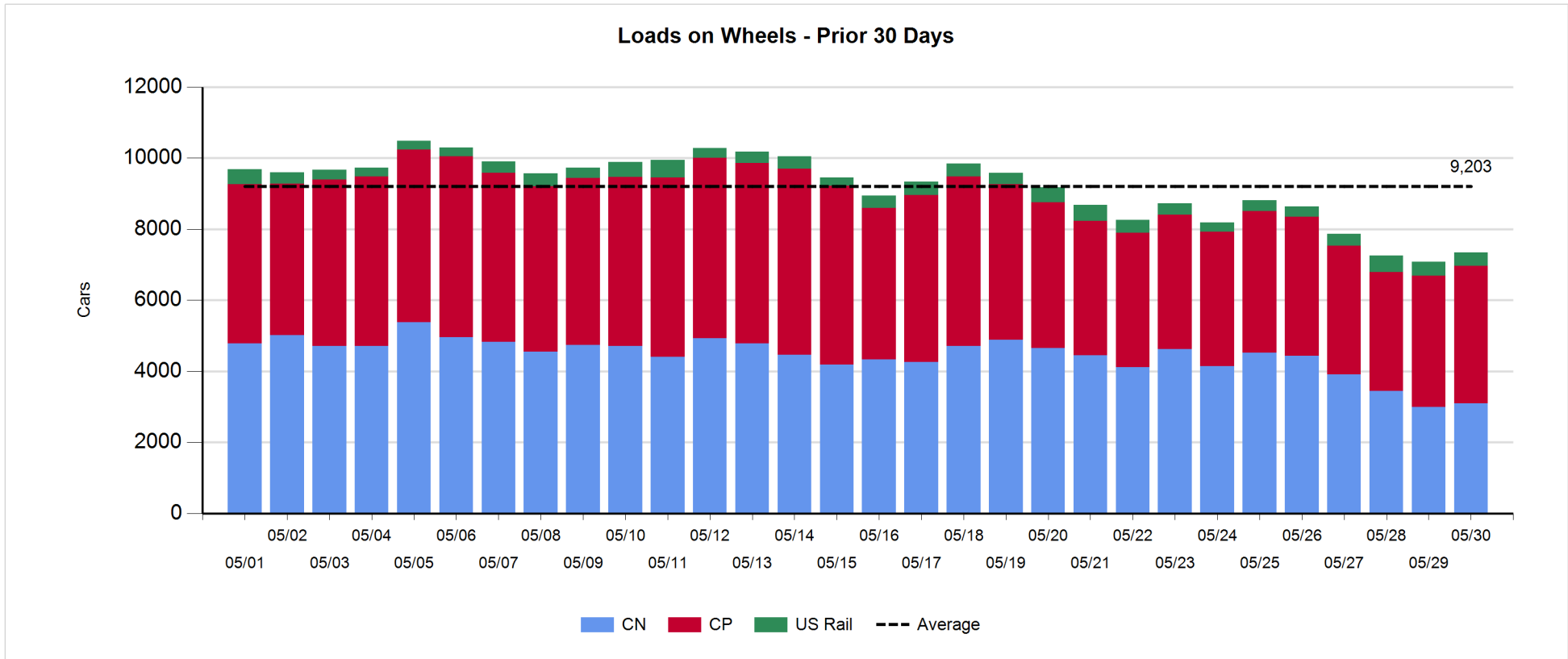
- CN and CP reported a total of 837 cars unloaded at the three western ports. Three days into week 44 unloads are nominally lagging last week's performance by some 250 unloads continuing to reflect lower unloads at Vancouver and higher unloads at Thunder Bay and Prince Rupert.
- Vancouver
  - 525 cars reported unloaded by CN and CP at the Port of Vancouver; CN - 283 and CP - 242.
  - There are 700+ cars on hand at Vancouver waiting placement for unloading - with only 250+ cars arriving at the port in the last 24 hours.
  - CN and CP have fewer than 200 cars enroute to Vancouver west of Alberta - fewer than 100 Kamloops and west - with traffic evenly split between the railways.
- Prince Rupert
  - 195 unloads reported at Prince Rupert resulting in week to date unloads continuing to run ahead of last week's pace.
  - Loads on wheels remain below 600 cars.
  - There are fewer than 100 cars west of Jasper - with about half of these Prince George and west.
  - There are currently fewer than 200 cars on site at the Port combined with cars enroute may support unloads for the next two days at best. Beyond this there are no cars currently west of Edmonton which may negatively impact unloads by the end of the week.
- Thunder Bay
  - 117 unloads reported at Thunder Bay - all CN - now tracking nominally ahead of last week's pace.
  - There are fewer than 200 cars on site at Thunder Bay with only 105 cars arriving at the Port in the prior 24 hours.
  - There are now 300+ cars enroute to Thunder Bay - all of which are currently in Winnipeg on CP.

**Daily Loads on Wheels - 5/30/2018**

	E Canada	Prince Rupert	Thunder Bay	USA/MEX	Vancouver	Total
CN	333	592	263	107	1,797	3,092
CP	121		683	544	2,524	3,872
Short Line	6				11	17
US Rail				357		357
	460	592	946	1,008	4,332	7,338

**Change in Loads on Wheels - Prior 24 Hours**

	E Canada	Prince Rupert	Thunder Bay	USA/MEX	Vancouver	Total
CN	99	7	63	5	-69	105
CP	39		141	-84	75	171
Short Line	0				-14	-14
US Rail				1		1
	138	7	204	-78	-8	263

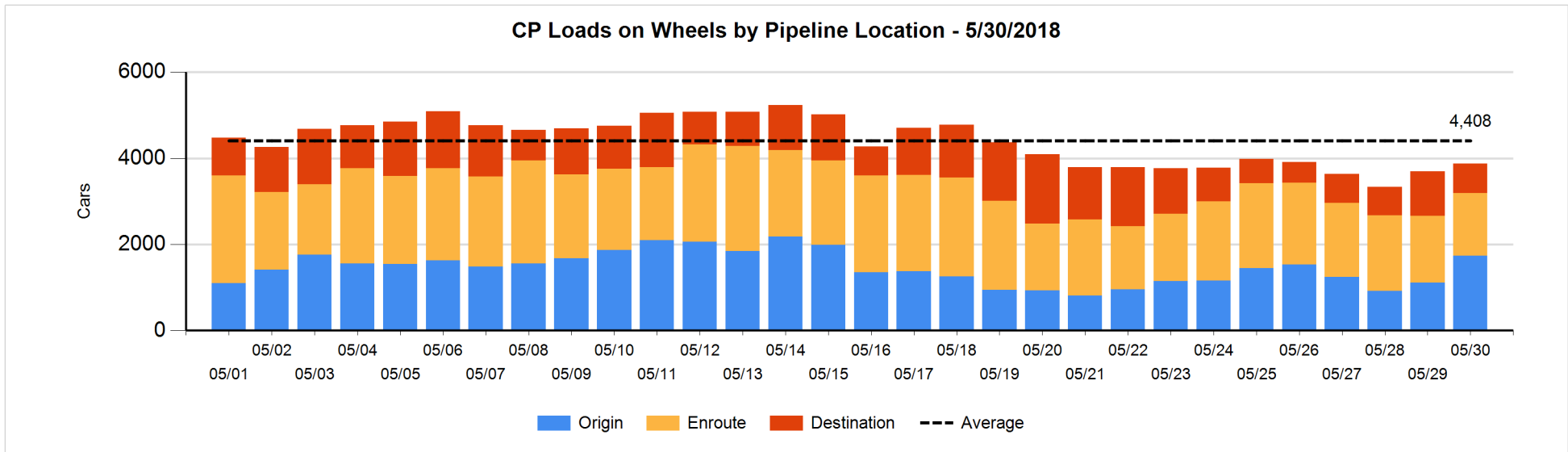
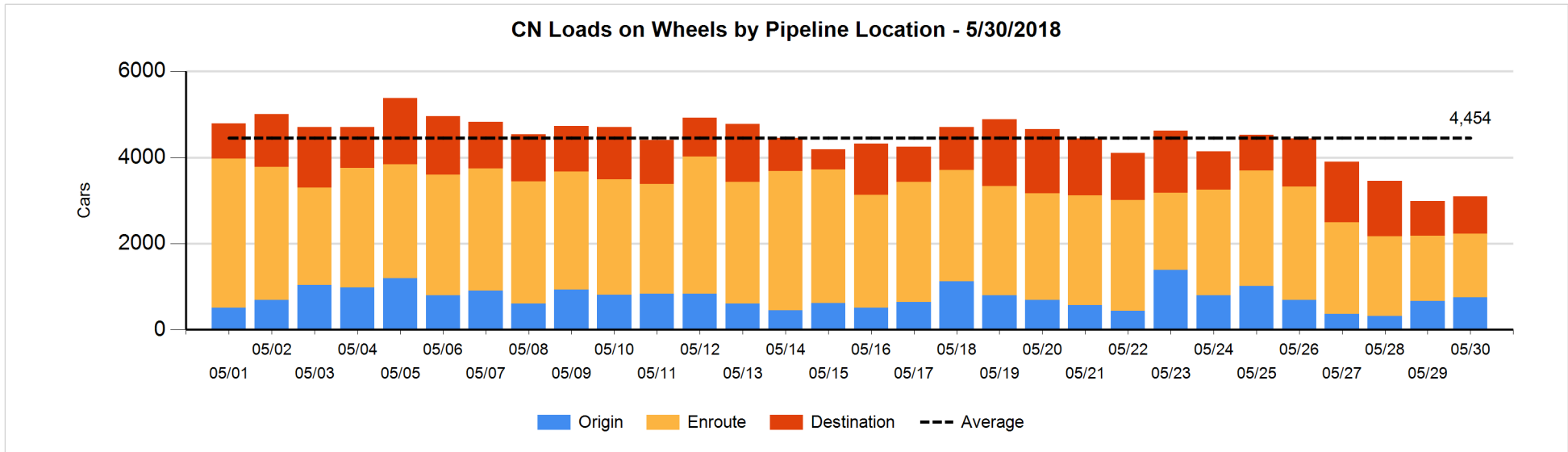


**Daily Loads on Wheels By Pipeline Location - 5/30/2018**

	E Canada	Prince Rupert	Thunder Bay	USA/MEX	Vancouver	Total
CN						
Origin	5	208	102	11	426	752
Enroute	269	227	1	85	897	1,479
Destination	59	157	160	11	474	861
	333	592	263	107	1,797	3,092
CP						
Origin	57		340	110	1,234	1,741
Enroute	64		312	352	718	1,446
Destination			31	82	572	685
	121		683	544	2,524	3,872
US Rail / Short Line						
Origin						
Enroute	2			116		118
Destination	4			241	11	256
	6			357	11	374

**Change in Daily Loads on Wheels By Pipeline Location - Prior 24 Hours**

	E Canada	Prince Rupert	Thunder Bay	USA/MEX	Vancouver	Total
CN						
Origin	-21	125	102	-17	-104	85
Enroute	121	-42	-105	16	-20	-30
Destination	-1	-76	66	6	55	50
	99	7	63	5	-69	105
CP						
Origin	57		219	54	301	631
Enroute	-15		0	-96	0	-111
Destination	-3		-78	-42	-226	-349
	39		141	-84	75	171
US Rail / Short Line						
Origin						
Enroute	0			2		2
Destination	0			-1	-14	-15
	0			1	-14	-13

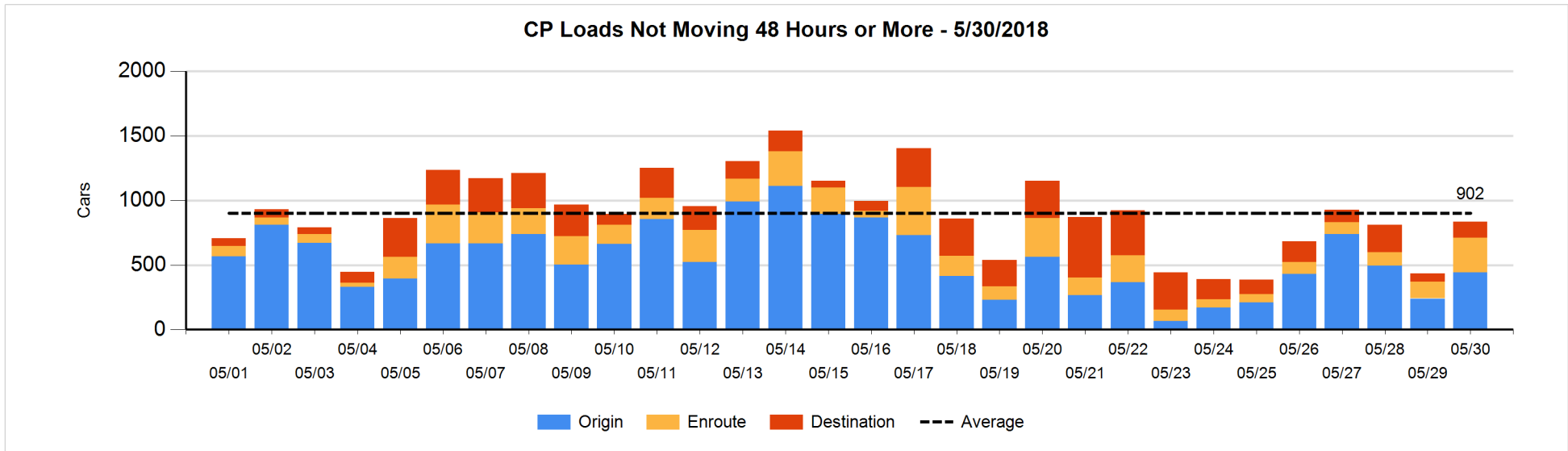
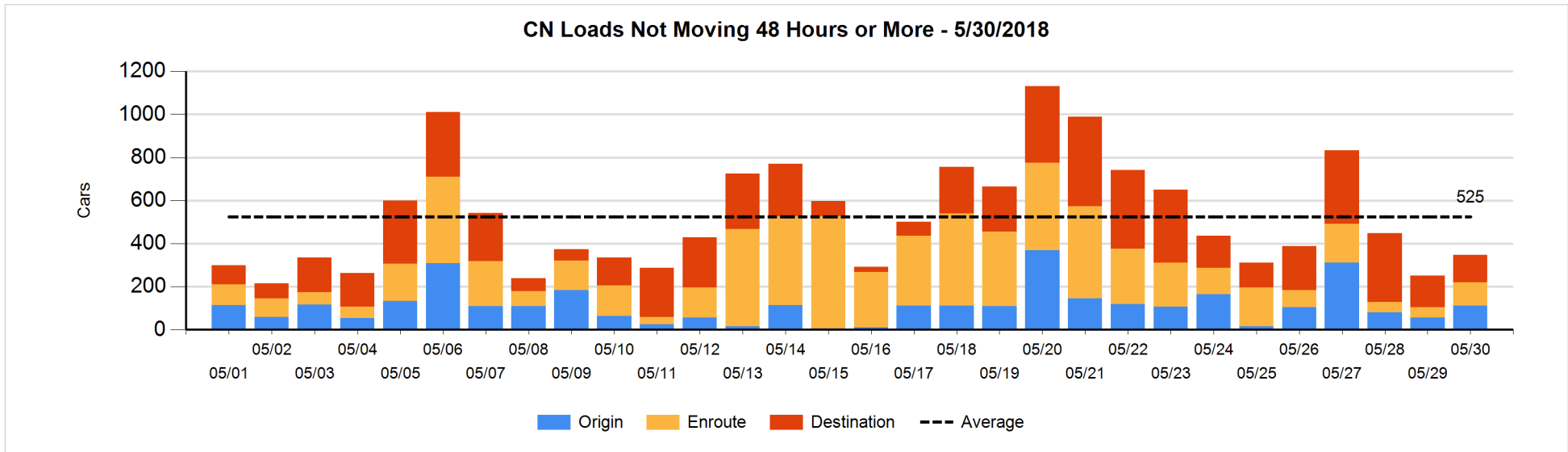


**Loads Not Moving 48 Hours or More - 5/30/2018**

	E Canada	Prince Rupert	Thunder Bay	USA/MEX	Vancouver	Total
<b>CN</b>						
Origin	1	8			102	111
Enroute	81	6		9	12	108
Destination	37	21	3	3	63	127
	119	35	3	12	177	346
<b>CP</b>						
Origin			12	7	423	442
Enroute	15		12	123	119	269
Destination				20	103	123
	15		24	150	645	834
<b>US Rail / Short Line</b>						
Origin						
Enroute	2			28		30
Destination	4			27	10	41
	6			55	10	71

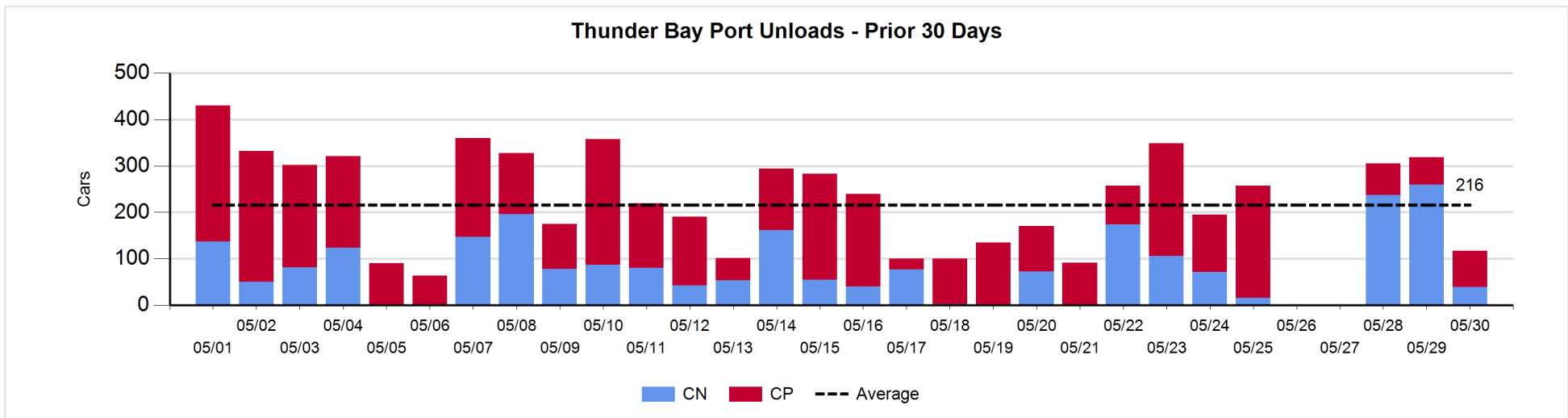
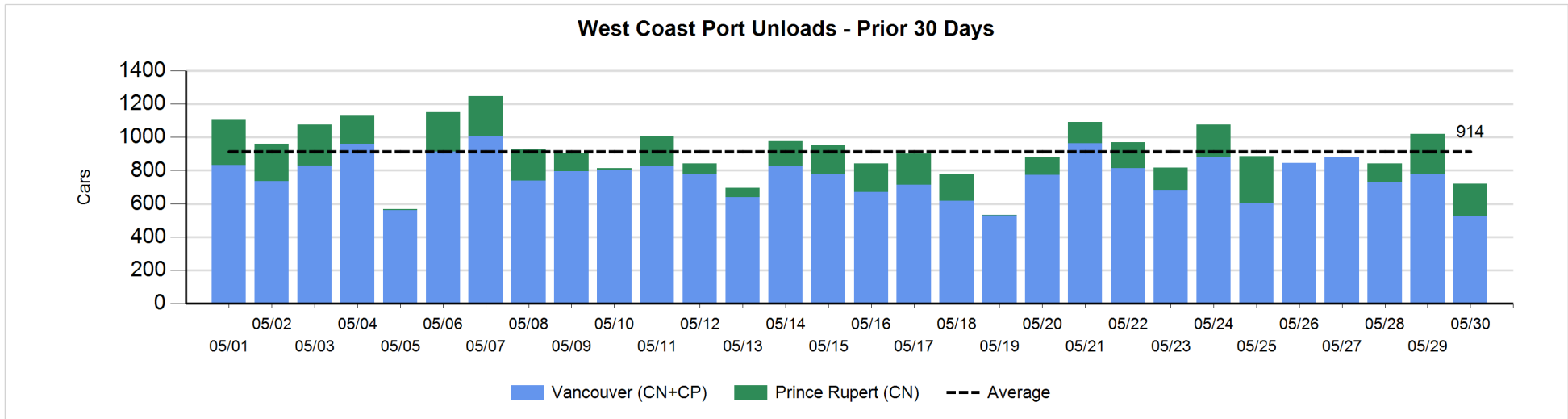
**Change in Loads Not Moving 48 Hours or More - 5/30/2018**

	E Canada	Prince Rupert	Thunder Bay	USA/MEX	Vancouver	Total
<b>CN</b>						
Origin	0	-23		-25	102	54
Enroute	54	4		1	1	60
Destination	1	0	0	-2	-17	-18
	55	-19	0	-26	86	96
<b>CP</b>						
Origin			6	7	189	202
Enroute	-3		8	98	37	140
Destination				0	57	57
	-3		14	105	283	399
<b>US Rail / Short Line</b>						
Origin						
Enroute	0			-7		-7
Destination	0			6	-4	2
	0			-1	-4	-5



**Port Unloads - 5/30/2018**

	Prince Rupert	Vancouver	West Coast Total	Thunder Bay	Total
CN	195	283	478	39	517
CP		242	242	78	320
	195	525	720	117	837





**Port Terminal Status**

**Vancouver**

Daily Activity for 5/30/2018

	Cars Arrived	Cars Received in Interchange	Cars Delivered in Interchange	Cars Placed for Unloading	Loads on Wheels at Destination As of 5/30/2018
CN	262	77		216	474
CP			77	206	572
SRY	1			13	11

**Port Unloads**

	05/30	05/29	Week To Date	Last Week
CN	283	447	1,054	2,856
CP	242	332	979	2,809
SRY	18	6	40	74

**Age Profile of Loaded Cars Waiting Placement for Unloading**

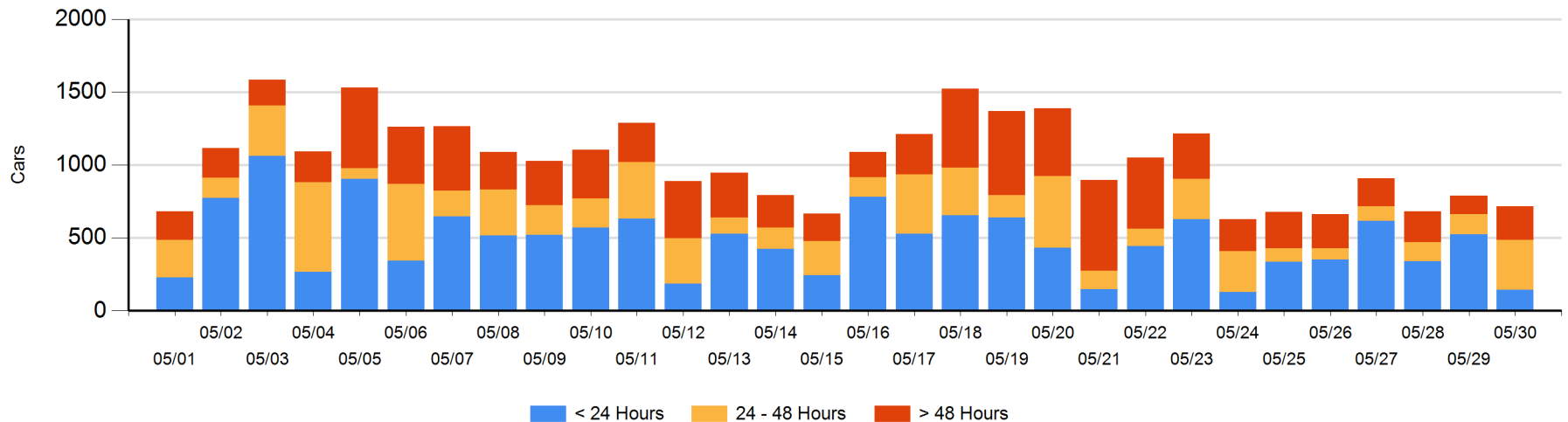
**Today**

	< 24 Hrs	24 - 48 Hrs	> 48-72 Hrs	> 72 Hrs	Total On Hand
CN	145	161	64	26	396
CP		180	69	72	321
SRY					0

**Change in Last 24 Hours**

	< 24 Hrs	24-48 Hrs	48 - 72 Hrs	> 72 Hrs
CN	-89	92	57	-6
CP	-291	111	0	52
SRY				

**Loaded Cars on Hand Vancouver Waiting for Placement - Last 30 Days All Railways**



**Port Terminal Status**

**Prince Rupert**

Daily Activity for 5/30/2018

	Cars Arrived	Cars Received in Interchange	Cars Delivered in Interchange	Cars Placed for Unloading	Loads on Wheels at Destination As of 5/30/2018
CN	119			137	157

**Port Unloads**

	05/30	05/29	Week To Date	Last Week
CN	195	240	547	901

**Age Profile of Loaded Cars Waiting Placement for Unloading**

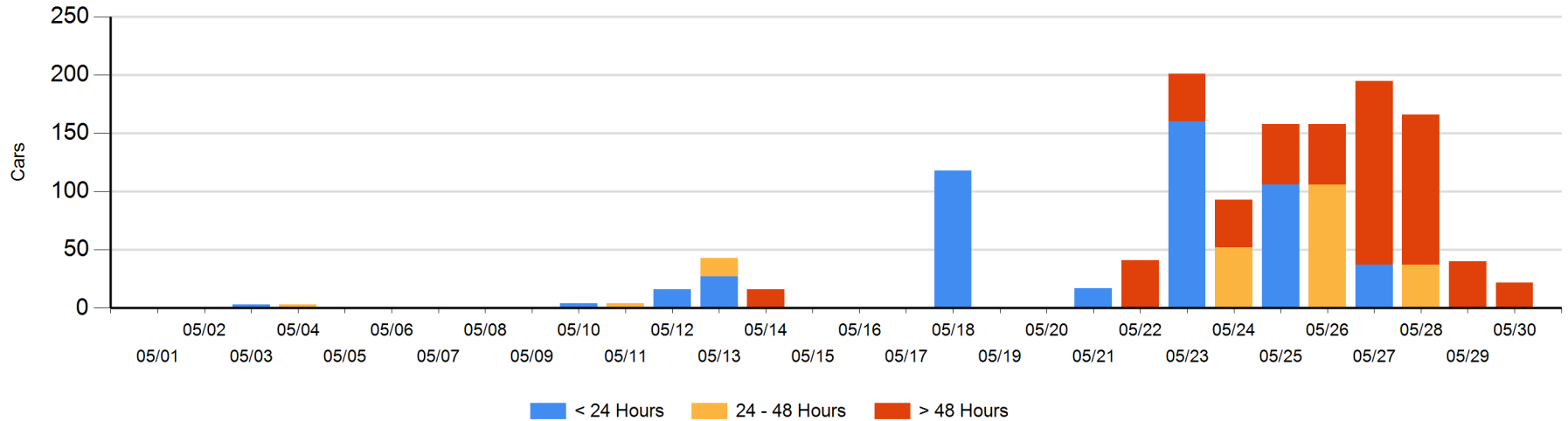
**Today**

	< 24 Hrs	24 - 48 Hrs	> 48-72 Hrs	> 72 Hrs	Total On Hand
CN				22	22

**Change in Last 24 Hours**

	< 24 Hrs	24-48 Hrs	48 - 72 Hrs	> 72 Hrs
CN			-37	19

Loaded Cars on Hand Prince Rupert Waiting for Placement - Last 30 Days All Railways



**Port Terminal Status**

**Thunder Bay**

Daily Activity for 5/30/2018

	Cars Arrived	Cars Received in Interchange	Cars Delivered in Interchange	Cars Placed for Unloading	Loads on Wheels at Destination As of 5/30/2018
CN	105				160
CP				91	31

**Port Unloads**

	05/30	05/29	Week To Date	Last Week
CN	39	259	535	367
CP	78	60	206	782

**Age Profile of Loaded Cars Waiting Placement for Unloading**

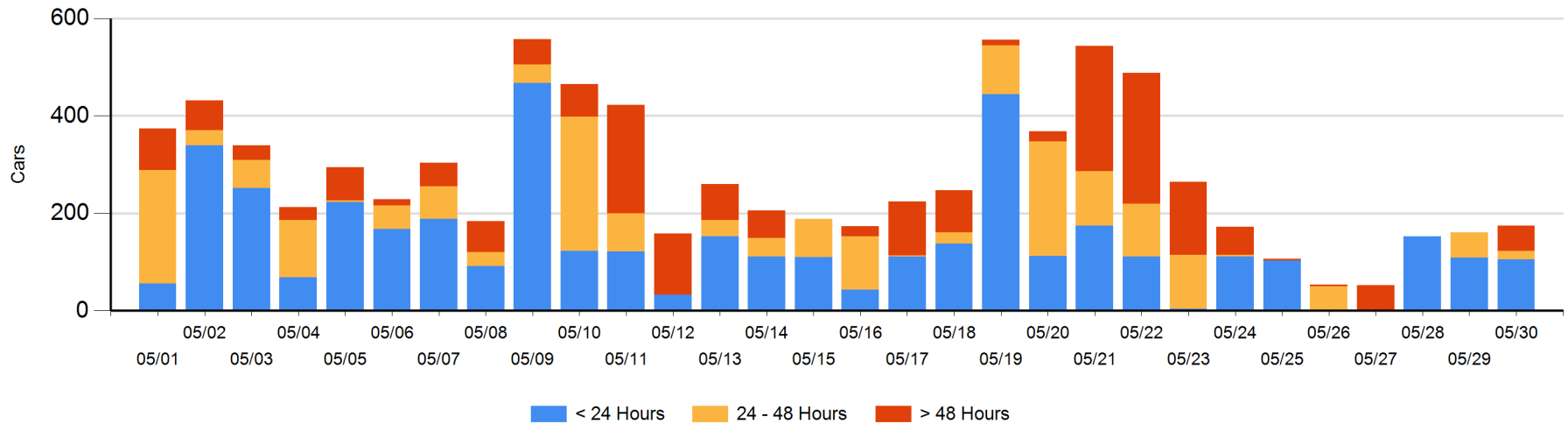
**Today**

	< 24 Hrs	24 - 48 Hrs	> 48-72 Hrs	> 72 Hrs	Total On Hand
CN	105		52		157
CP		18			18

**Change in Last 24 Hours**

	< 24 Hrs	24-48 Hrs	48 - 72 Hrs	> 72 Hrs
CN	105	-52	52	
CP	-109	18		

**Loaded Cars on Hand Thunder Bay Waiting for Placement - Last 30 Days All Railways**



## Measurement Definitions

Loads on Wheels	<p>Count of loaded rail cars including all rail cars that have been released loaded at origin and have not been reported by the railway as unloaded at destination.</p> <p>Counts include all rail cars (hopper cars and boxcars) moving within a pipeline.</p>
Loads Not Moving	<p>Loaded rail cars for which the railways have not reported a movement event for 48 hours or more whether the rail car is at origin, enroute or at destination.</p>
Port Unloads	<p>Count of rail cars reported by railways as unloaded at the western port destinations of Vancouver, Prince Rupert and Thunder Bay.</p> <p>Unload counts include all rail cars (hopper cars and boxcars) unloaded by all receivers including major port terminals, transloaders and other receivers.</p>
Cars Arrived	<p>Count of rail cars reported as arrived at the destination railway terminal.</p>
Cars Received in Interchange	<p>Count of rail cars received in interchange by each railway within a destination railway terminal. Interchange activity is tracked for the Vancouver and Thunder Bay pipelines as applicable.</p>
Cars Delivered in Interchange	<p>Count of rail cars delivered in interchange by each railway within a destination railway terminal. Interchange activity is tracked for the Vancouver and Thunder Bay pipelines as applicable.</p>
Cars Placed for Unloading	<p>Count of rail cars reported by the railways as placed loaded at the receiver's facility for unloading.</p>
Loads on Wheels at Destination	<p>Count of rail cars that remain under load within the destination railway terminal including rail cars that have been reported as placed for unloading but not yet reported as unloaded.</p>
Waiting Placement for Unloading	<p>Count of rail cars that have been reported as arrived at the destination railway terminal but not reported as placed for unloading by the railway.</p> <p>For the Ports of Vancouver, Prince Rupert and Thunder Bay the count of rail cars waiting placement for unloading is categorized by age – i.e. the elapsed time from arrival at destination to the current report date.</p>