

SPEED READ

- Loads on wheels declined 6% in the last 24 hours reflecting lower volumes on CP and slightly higher volumes on CN. Volumes are down in all corridors other than the US corridor which is unchanged overnight.
- CN rationed no hopper car orders in week 40 although signs of rationing are now appearing on CP.
- Network fluidity improved overnight for both CN and CP with idle car counts declining by more than 343 cars in total and have now declined by nearly 900 cars in the last two days reversing the increases seen earlier in the week.
- Western port unloads in week 42 continue to lag the prior week by some 300 unloads through 3 days with unloads down mostly in Vancouver which trails last week's performance by more than 200 unloads through the first three days of the week.
- Shipper demand continues to be lower in the Prince Rupert corridor with total orders for week 42 once again below the 1,000 car threshold for the third consecutive week. This compares to a weekly average of 1,500 for the preceding four weeks.

Loads on Wheels

- Loads on wheels declined 6% (526 cars) overnight having now declined for four consecutive days declining by more than 1,300 cars (13%) during that time period - now at 8,930 - below 9,000 cars for the first time in more than 30 days and 12% below the trailing 30 day average
- The change in loads on wheels reflects slightly higher volumes on CN (+135) and lower volumes on CP (-756).
- On a net basis reduced loads on wheels reflects lower volumes in all corridors other than the US which remained unchanged.
- CN volumes reflect higher volumes in the Vancouver corridor (+251) offset by slight declines in other corridors. System wide CN loads on wheels now at 4,324 - 13% below the trailing 30 day average.
- CP volumes declined 15% overnight reflecting lower volumes in all corridors other than E Canada led by Vancouver (-477) and Thunder Bay (-200). CP system wide loads on wheels now at 4,267 -11% below the trailing 30 day average.
- Vancouver now at 5,707 - 6% below the trailing 30 day average.
- The Prince Rupert pipeline currently sits at 931 - 24% below the trailing 30 day average.
- Thunder Bay volumes down for the fourth consecutive day having now fallen below 900 cars, the lowest level in 4 weeks - 33% below the trailing 30 day average - 66% of traffic moving on CP.

Hopper Car Rationing

- No hopper car rationing by CN occurred in week 40 although evidence of rationing is now appearing on CP.

Loads Not Moving

- **The count of cars not moving for 48+ hours fell 19% (343 cars) reflecting declines on both CN and CP although largely accounted for by the decline on CN. The count of idle cars now stands at 1,406.**
- CN
 - **The count of idle cars declined 51% (304 cars) overnight marking the second consecutive day of decline. Idle car counts now at 292 - the lowest level in a week.**
 - The number of cars idle for 4+ days fell 25% overnight - now below 300 cars.
 - The count of cars not moving for 7+ days unchanged - remains below 25 cars.
 - Vancouver represents 83% of all idle cars with the majority of cars dwelling on line.

- CP
 - **CP counts declined modestly (39 cars) overnight yet remain above the 1,000 car threshold for the fifth time in six days. The count of idle cars on CP now at 1,114.**
 - The number of cars idle for 4+ days largely unchanged remaining above the 600 car mark
 - The count of cars idle for 7+ days up 50% overnight - now approaching 200 cars.
 - Vancouver continues to account for the majority of all idle cars (75%).
 - In total 77% of all idle cars are dwelling at origin locations.

Port Performance

- CN and CP reported a total of 1,081 cars unloaded at the three western ports - through three days week 42 unloads continue to track some 300 unloads behind last week's pace reflecting lower unloads at all three western ports with the most significant decline seen in Vancouver unloads which lag last week's performance by more than 200 unloads.
- Vancouver
 - 672 cars reported unloaded by CN and CP at the Port of Vancouver; CN - 244 and CP - 428.
 - There are nearly 1,100 cars on hand at Vancouver waiting placement for unloading - with 1,200+ cars arriving at the port in the last 24 hours.
 - CN and CP have 1,300 cars enroute to Vancouver west of Alberta - 850+ Kamloops and west - with traffic split evenly between the railways.
- Prince Rupert
 - Prince Rupert unloads were below 200 for the third consecutive day this week but trail last week's performance by fewer than 50 unloads week to date.
 - Loads on wheels remain below 1,000 cars.
 - There are 400+ cars west of Jasper - 300+ west of Prince George.
 - Given the cars on hand and the location of cars enroute - assuming timely movement of inbound traffic it is expected that Rupert unloads should maintain at this pace given the reduced unload capacity due to ongoing maintenance.
- Thunder Bay
 - 240 unloads reported by CN and CP yesterday - week 42 unloads continue to trail last week's performance by approximately 100 unloads.
 - There are currently fewer than 200 cars on hand waiting placement for unload with less than 100 cars arriving at the Port in the last 24 hours.
 - There are 400+ cars enroute to Thunder Bay - only 150 Winnipeg and east - all moving on CP.
 - Given the cars on hand at the Port and the status of the inbound pipeline we would expect to see unloads remain at current levels in the coming days.

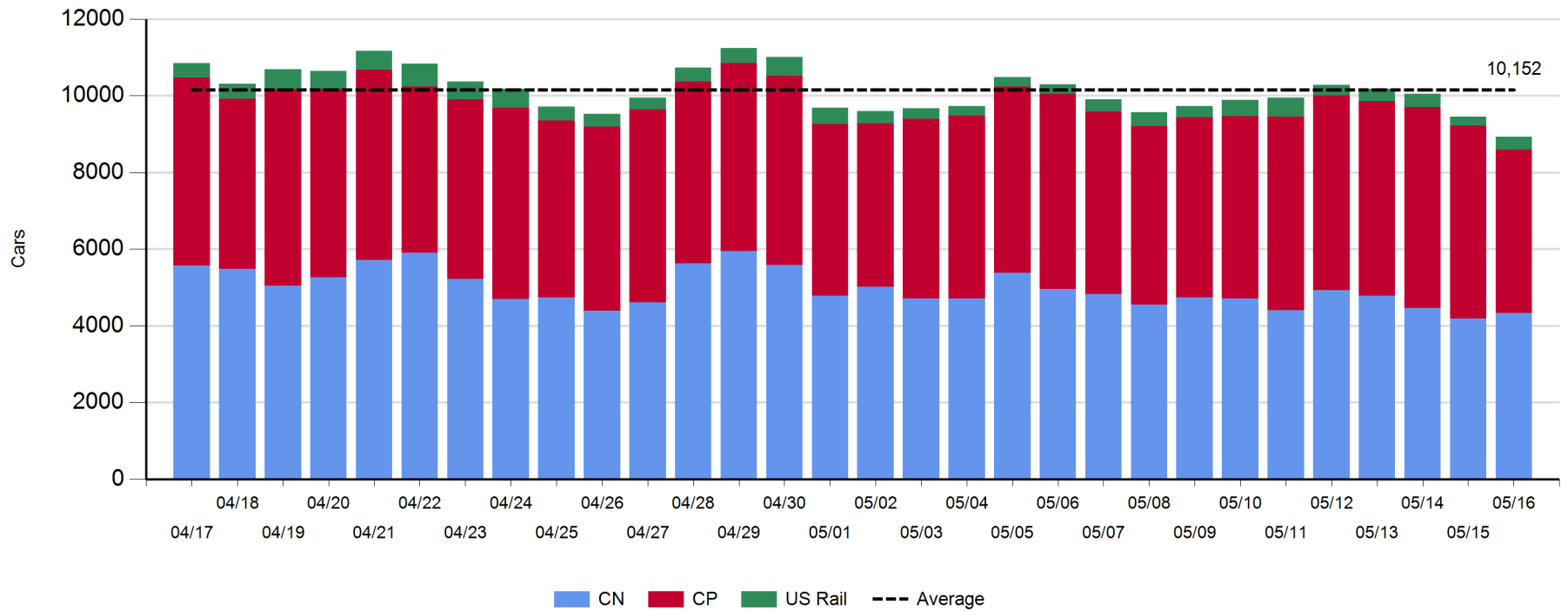
Daily Loads on Wheels - 5/16/2018

	E Canada	Prince Rupert	Thunder Bay	USA/MEX	Vancouver	Total
CN	324	931	283	159	2,627	4,324
CP	121		558	538	3,050	4,267
Short Line	7				30	37
US Rail				302		302
	452	931	841	999	5,707	8,930

Change in Loads on Wheels - Prior 24 Hours

	E Canada	Prince Rupert	Thunder Bay	USA/MEX	Vancouver	Total
CN	-39	-61	11	-27	251	135
CP	0		-200	-79	-477	-756
Short Line	1				-12	-11
US Rail				106		106
	-38	-61	-189	0	-238	-526

Loads on Wheels - Prior 30 Days

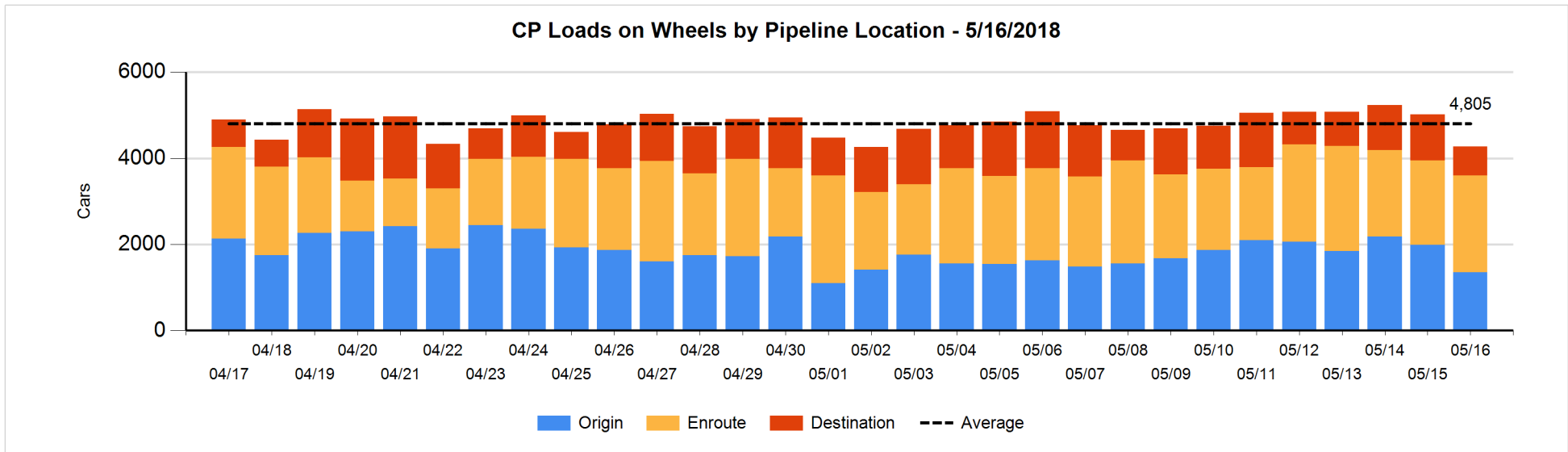
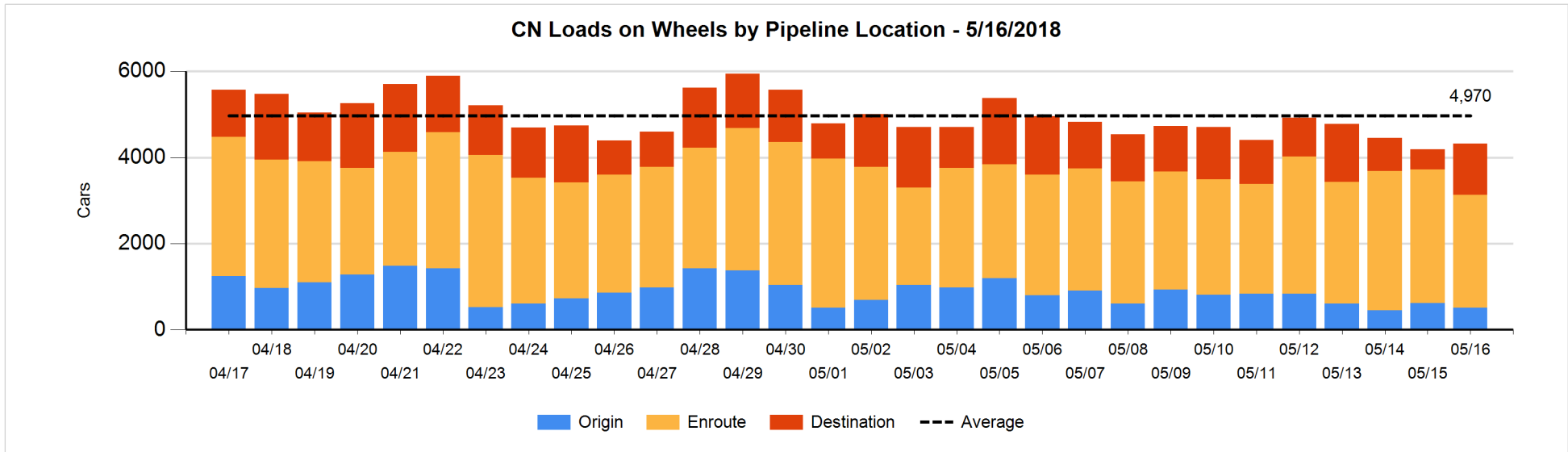


Daily Loads on Wheels By Pipeline Location - 5/16/2018

	E Canada	Prince Rupert	Thunder Bay	USA/MEX	Vancouver	Total
CN						
Origin	27	205	51	3	221	507
Enroute	281	616	151	140	1,438	2,626
Destination	16	110	81	16	968	1,191
	324	931	283	159	2,627	4,324
CP						
Origin	16		154	156	1,020	1,346
Enroute	105		271	293	1,584	2,253
Destination			133	89	446	668
	121		558	538	3,050	4,267
US Rail / Short Line						
Origin						
Enroute	1			202		203
Destination	6			100	30	136
	7			302	30	339

Change in Daily Loads on Wheels By Pipeline Location - Prior 24 Hours

	E Canada	Prince Rupert	Thunder Bay	USA/MEX	Vancouver	Total
CN						
Origin	-1	99	-100	-7	-100	-109
Enroute	-1	-113	54	-6	-410	-476
Destination	-37	-47	57	-14	761	720
	-39	-61	11	-27	251	135
CP						
Origin	-40		-127	22	-495	-640
Enroute	40		126	-109	229	286
Destination			-199	8	-211	-402
	0		-200	-79	-477	-756
US Rail / Short Line						
Origin						
Enroute	1			76		77
Destination	0			30	-12	18
	1			106	-12	95

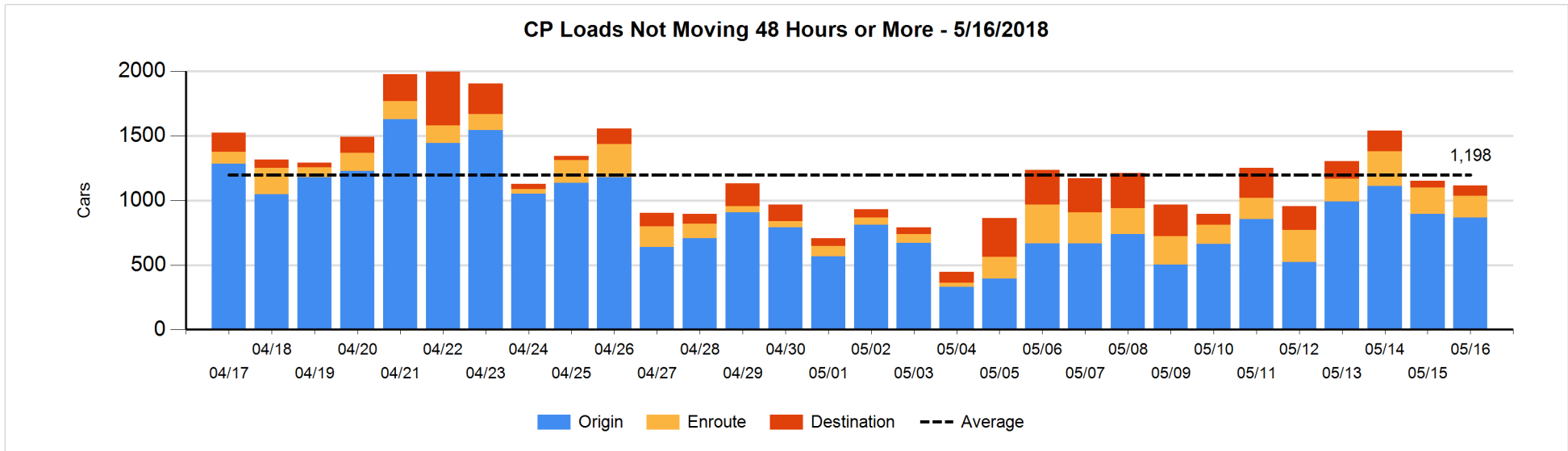
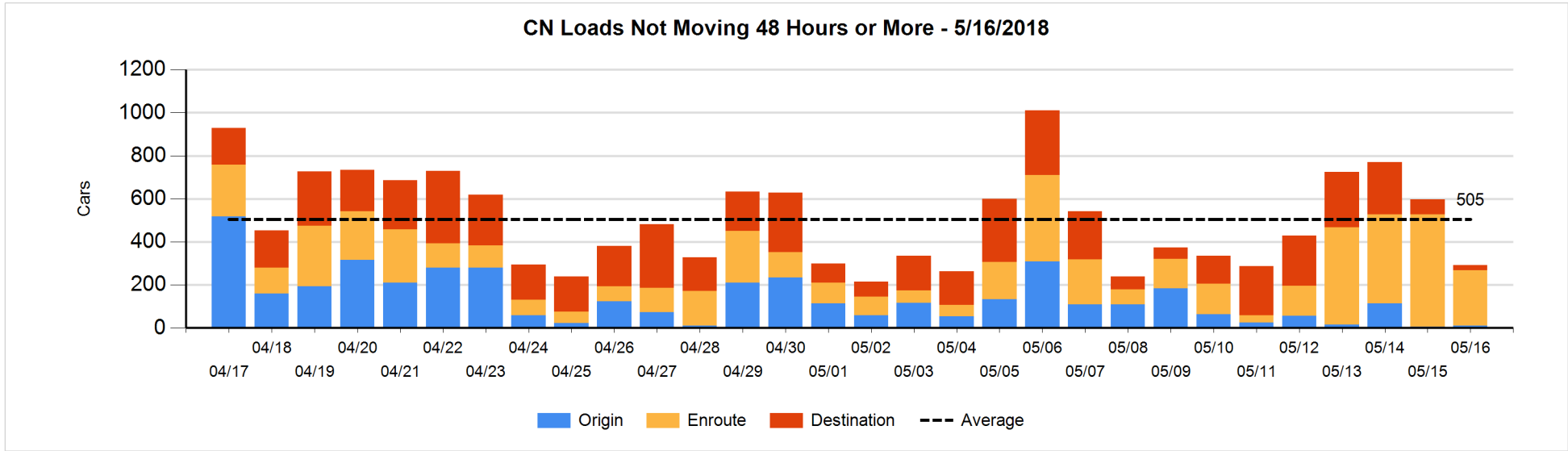


Loads Not Moving 48 Hours or More - 5/16/2018

	E Canada	Prince Rupert	Thunder Bay	USA/MEX	Vancouver	Total
CN						
Origin	1			1	9	11
Enroute	2	13		23	220	258
Destination	1	2	1	7	12	23
	4	15	1	31	241	292
CP						
Origin	16		57	111	682	866
Enroute	22		3	19	125	169
Destination			20	30	29	79
	38		80	160	836	1114
US Rail / Short Line						
Origin						
Enroute				41		41
Destination	5			32	10	47
	5			73	10	88

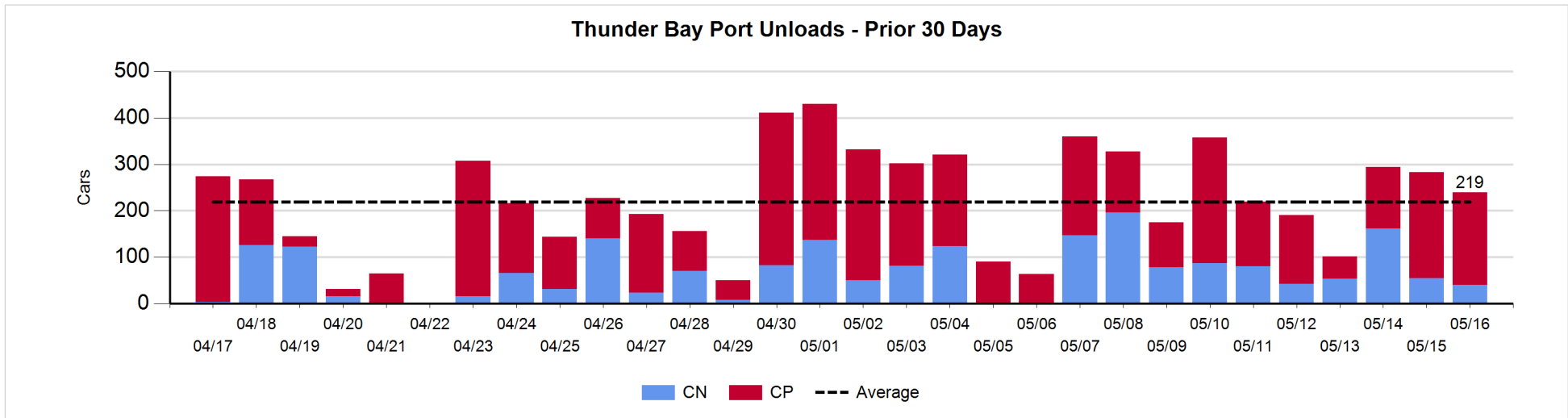
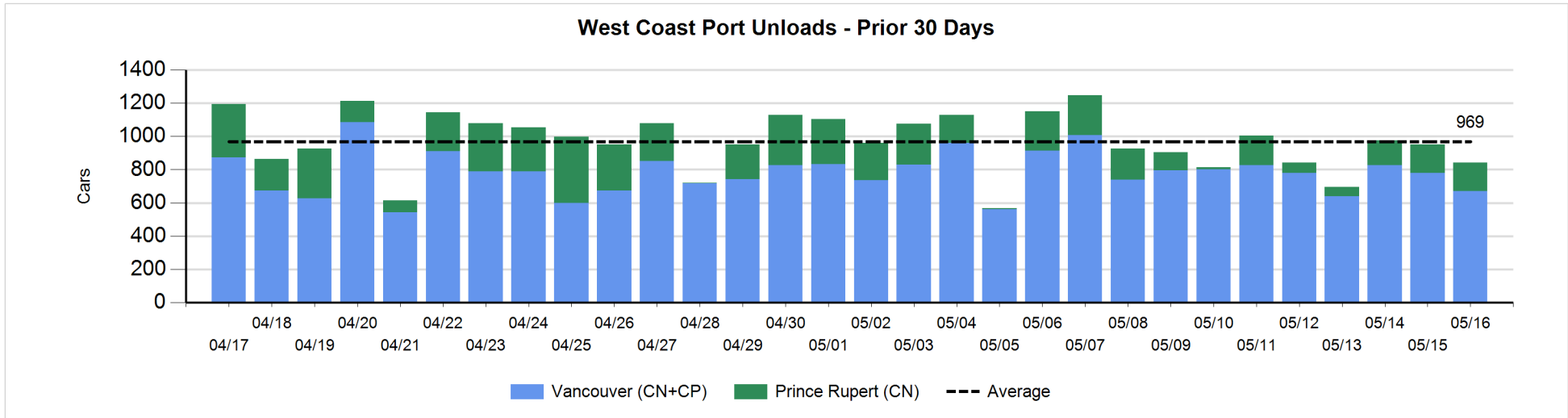
Change in Loads Not Moving 48 Hours or More - 5/16/2018

	E Canada	Prince Rupert	Thunder Bay	USA/MEX	Vancouver	Total
CN						
Origin	0	-1		1	6	6
Enroute	0	-159		-1	-104	-264
Destination	-26	0	1	1	-22	-46
	-26	-160	1	1	-120	-304
CP						
Origin	16		0	60	-105	-29
Enroute	5		-1	8	-47	-35
Destination			20	10	-5	25
	21		19	78	-157	-39
US Rail / Short Line						
Origin						
Enroute				-1		-1
Destination	2			13	7	22
	2			12	7	21



Port Unloads - 5/16/2018

	Prince Rupert	Vancouver	West Coast Total	Thunder Bay	Total
CN	169	244	413	40	453
CP		428	428	200	628
	169	672	841	240	1,081



Port Terminal Status

Vancouver

Daily Activity for 5/16/2018

	Cars Arrived	Cars Received in Interchange	Cars Delivered in Interchange	Cars Placed for Unloading	Loads on Wheels at Destination As of 5/16/2018
CN	701	253	210	347	968
CP	521	203	261	439	446
SRY	1	15		14	30

Port Unloads

	05/16	05/15	Week To Date	Last Week
CN	244	447	1,056	2,534
CP	428	334	1,224	3,054
SRY	15	21	49	35

Age Profile of Loaded Cars Waiting Placement for Unloading

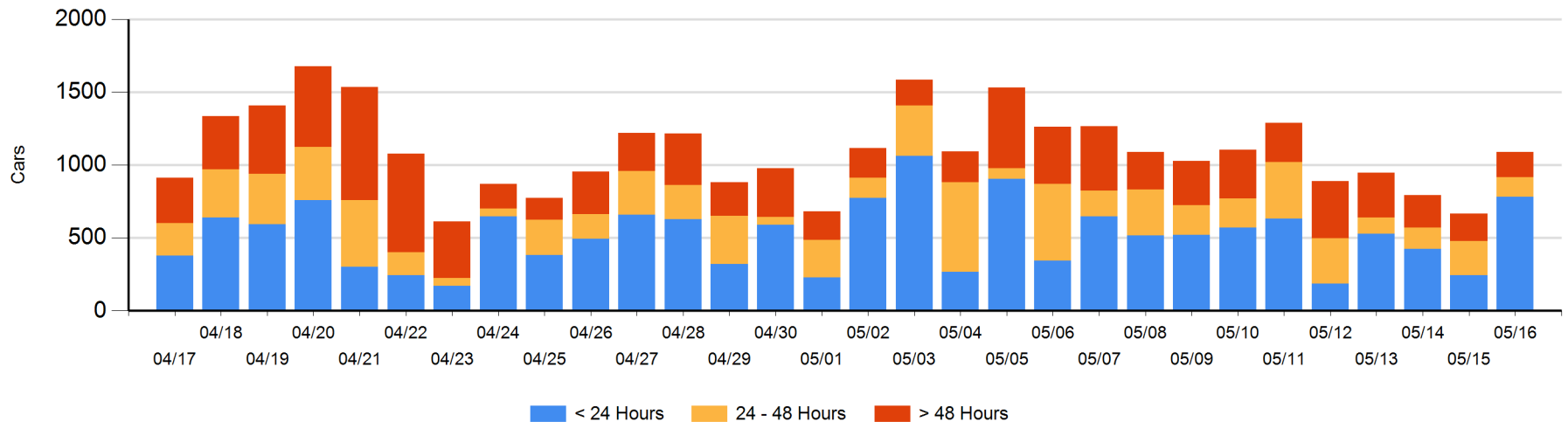
Today

	< 24 Hrs	24 - 48 Hrs	> 48-72 Hrs	> 72 Hrs	Total On Hand
CN	461	85	43	34	623
CP	322	49	85	11	467
SRY					0

Change in Last 24 Hours

	< 24 Hrs	24-48 Hrs	48 - 72 Hrs	> 72 Hrs
CN	382	42	-46	-36
CP	159	-146	69	-1
SRY				

Loaded Cars on Hand Vancouver Waiting for Placement - Last 30 Days All Railways



Port Terminal Status

Prince Rupert

Daily Activity for 5/16/2018

	Cars Arrived	Cars Received in Interchange	Cars Delivered in Interchange	Cars Placed for Unloading	Loads on Wheels at Destination As of 5/16/2018
CN	122			122	110

Port Unloads

	05/16	05/15	Week To Date	Last Week
CN	169	169	487	843

Age Profile of Loaded Cars Waiting Placement for Unloading

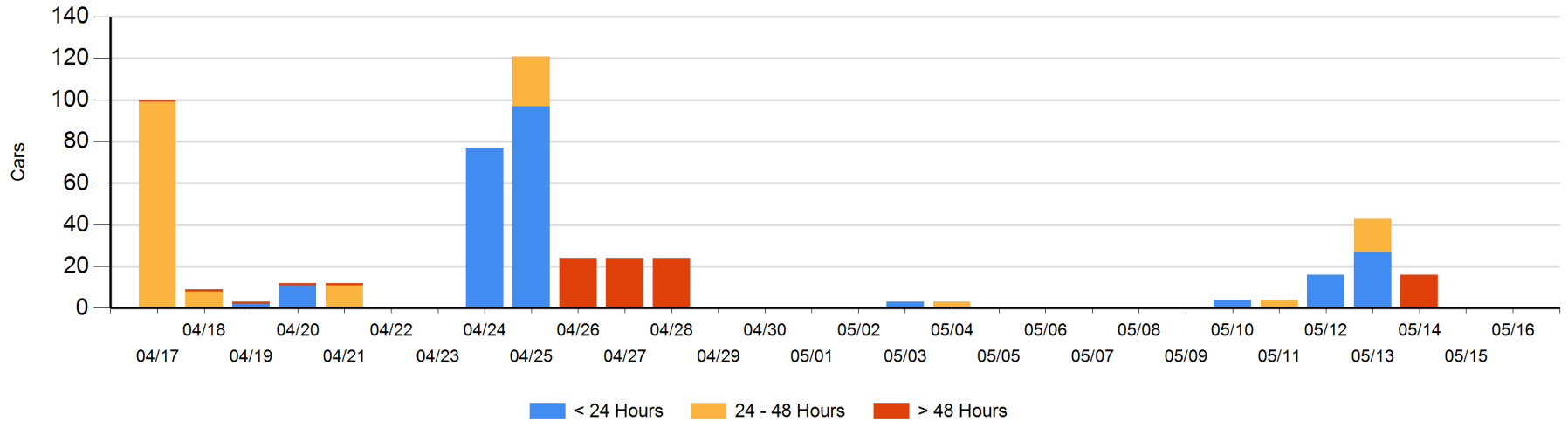
Today

	< 24 Hrs	24 - 48 Hrs	> 48-72 Hrs	> 72 Hrs	Total On Hand
CN					0

Change in Last 24 Hours

	< 24 Hrs	24-48 Hrs	48 - 72 Hrs	> 72 Hrs
CN				

Loaded Cars on Hand Prince Rupert Waiting for Placement - Last 30 Days All Railways



Port Terminal Status

Thunder Bay

Daily Activity for 5/16/2018

	Cars Arrived	Cars Received in Interchange	Cars Delivered in Interchange	Cars Placed for Unloading	Loads on Wheels at Destination As of 5/16/2018
CN	97			55	81
CP	1			59	133

Port Unloads

	05/16	05/15	Week To Date	Last Week
CN	40	55	257	685
CP	200	228	560	1,047

Age Profile of Loaded Cars Waiting Placement for Unloading

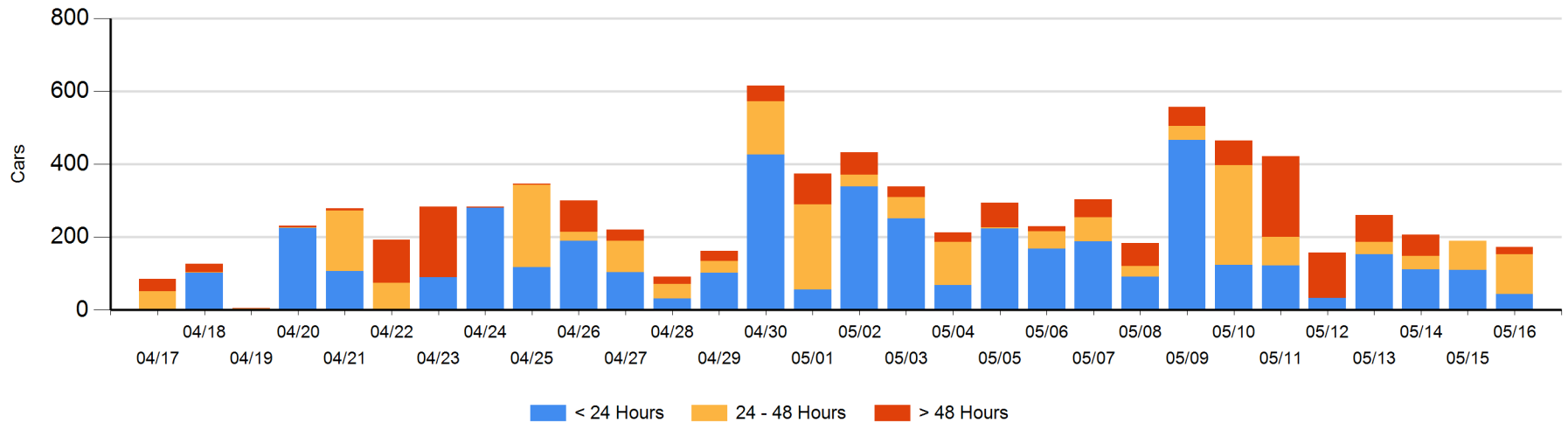
Today

	< 24 Hrs	24 - 48 Hrs	> 48-72 Hrs	> 72 Hrs	Total On Hand
CN	42				42
CP	1	110	20		131

Change in Last 24 Hours

	< 24 Hrs	24-48 Hrs	48 - 72 Hrs	> 72 Hrs
CN	42			
CP	-109	31	20	

Loaded Cars on Hand Thunder Bay Waiting for Placement - Last 30 Days All Railways



Measurement Definitions

Loads on Wheels	<p>Count of loaded rail cars including all rail cars that have been released loaded at origin and have not been reported by the railway as unloaded at destination.</p> <p>Counts include all rail cars (hopper cars and boxcars) moving within a pipeline.</p>
Loads Not Moving	<p>Loaded rail cars for which the railways have not reported a movement event for 48 hours or more whether the rail car is at origin, enroute or at destination.</p>
Port Unloads	<p>Count of rail cars reported by railways as unloaded at the western port destinations of Vancouver, Prince Rupert and Thunder Bay.</p> <p>Unload counts include all rail cars (hopper cars and boxcars) unloaded by all receivers including major port terminals, transloaders and other receivers.</p>
Cars Arrived	<p>Count of rail cars reported as arrived at the destination railway terminal.</p>
Cars Received in Interchange	<p>Count of rail cars received in interchange by each railway within a destination railway terminal. Interchange activity is tracked for the Vancouver and Thunder Bay pipelines as applicable.</p>
Cars Delivered in Interchange	<p>Count of rail cars delivered in interchange by each railway within a destination railway terminal. Interchange activity is tracked for the Vancouver and Thunder Bay pipelines as applicable.</p>
Cars Placed for Unloading	<p>Count of rail cars reported by the railways as placed loaded at the receiver's facility for unloading.</p>
Loads on Wheels at Destination	<p>Count of rail cars that remain under load within the destination railway terminal including rail cars that have been reported as placed for unloading but not yet reported as unloaded.</p>
Waiting Placement for Unloading	<p>Count of rail cars that have been reported as arrived at the destination railway terminal but not reported as placed for unloading by the railway.</p> <p>For the Ports of Vancouver, Prince Rupert and Thunder Bay the count of rail cars waiting placement for unloading is categorized by age – i.e. the elapsed time from arrival at destination to the current report date.</p>