

Correction - yesterday's report erroneously referenced port unloads for weeks 14 and 13 - this should have said weeks 13 and 12 respectively.

Loads on Wheels

- System wide loads on wheels declined for the second consecutive day and are now below 10,500 - a net decline of 131 cars in the prior 24 hours; total loads on wheels 4% below the trailing 30 day average
- CN loads on wheels declined by 474 cars - the majority in the Prince Rupert corridor although some decline was seen in all corridors other than Vancouver; CP loads on wheels increased by 344 cars - primarily in the Thunder Bay corridor
- Reduction in CN volumes seen primarily at destination locations at all three western ports.
- Vancouver remains above 6,000 cars while Thunder Bay is nearing 1,900 and Prince Rupert has dropped to below 1,300

Loads Not Moving

- The count of loaded cars not moving for 48 hours unchanged in total in the prior 24 hours - remains above 2,300
- CN counts declined offset by an increase in the number of cars not moving on CP lines
- CN
 - The count of cars not moving declined by 103 total cars - principally at Prince Rupert; total loads on wheels now idle for 48 hours or more at 820
 - Counts declined in the Eastern Canada corridor offset by a slight increase in cars not moving enroute to the Port of Vancouver
 - 60% of cars dwelling at origin locations - split between the Prince Rupert and Vancouver corridors
- CP
 - CP counts increased by a net 125 cars in the prior 24 hours - principally at the Port of Vancouver; total loads on wheels now idle for 48 hours or more at 1,447
 - As with CN the majority of CP cars (77%) not moving are dwelling at origin locations with 70% of those (754) destined to Vancouver

Port Performance

- CN and CP unloaded a total of 1,813 cars at the three western ports
- Vancouver
 - Total of 1,061 cars reported unloaded by CN and CP at the Port of Vancouver; CN - 617 and CP 444
 - There 287 cars on CP in Vancouver that have been waiting placement for unloading for more than 48 hours - 107 of which have been waiting for more than 72 hours
- Thunder Bay
 - 402 unloads at Thunder Bay; CN - 98 and CP 304

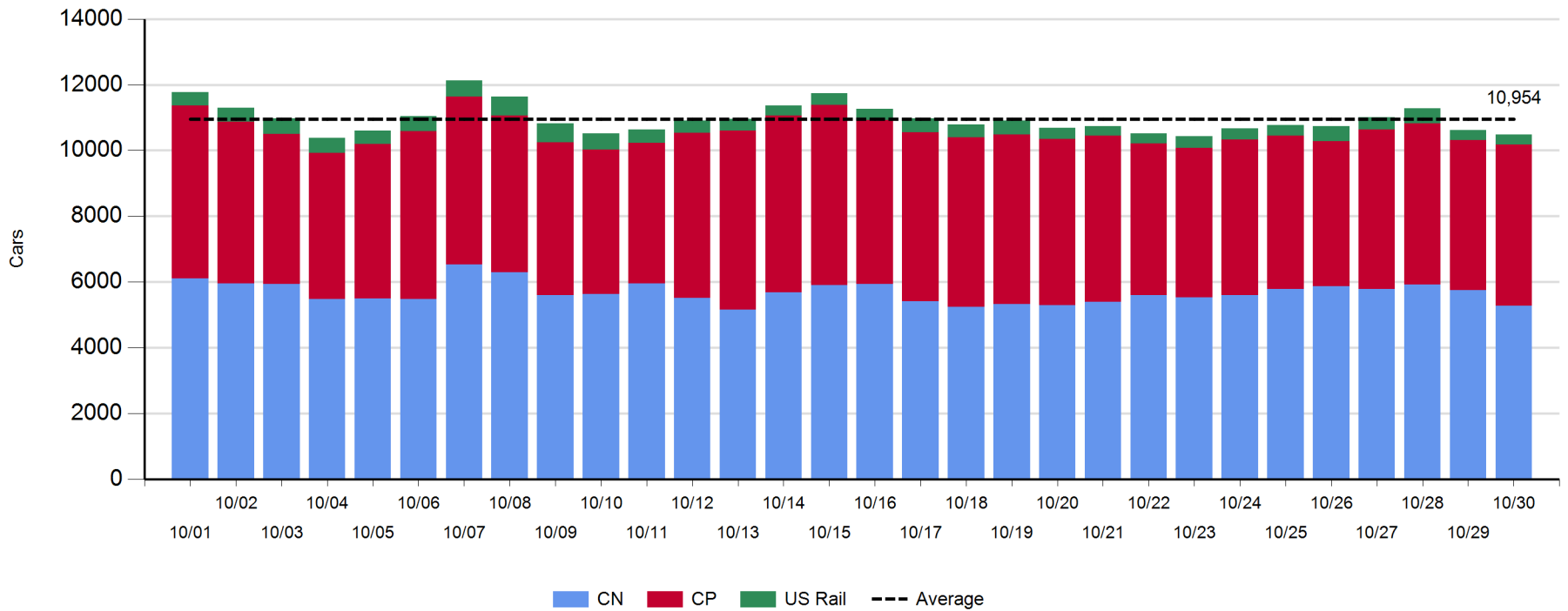
Daily Loads on Wheels - 10/30/2017

	E Canada	Prince Rupert	Thunder Bay	USA/MEX	Vancouver	Total
CN	234	1,262	565	311	2,908	5,280
CP	70		1,317	347	3,165	4,899
Short Line	15				15	30
US Rail				278		278
	319	1,262	1,882	936	6,088	10,487

Change in Loads on Wheels - Prior 24 Hours

	E Canada	Prince Rupert	Thunder Bay	USA/MEX	Vancouver	Total
CN	-35	-346	-95	-67	69	-474
CP	-5		230	98	21	344
Short Line	7				-9	-2
US Rail				1		1
	-33	-346	135	32	81	-131

Loads on Wheels - Prior 30 Days

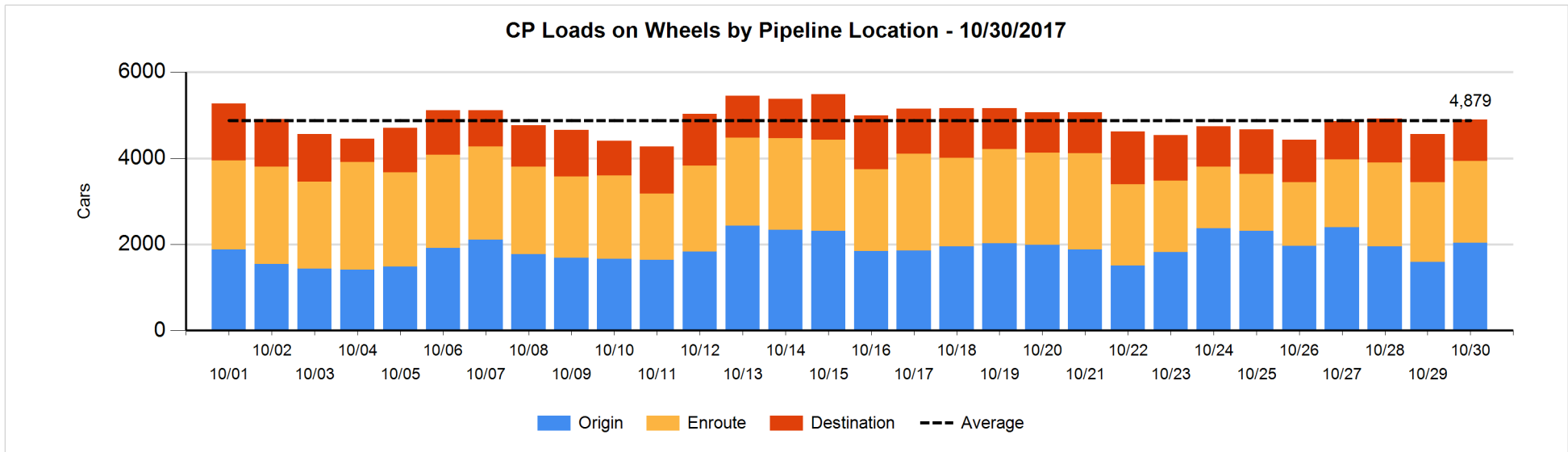
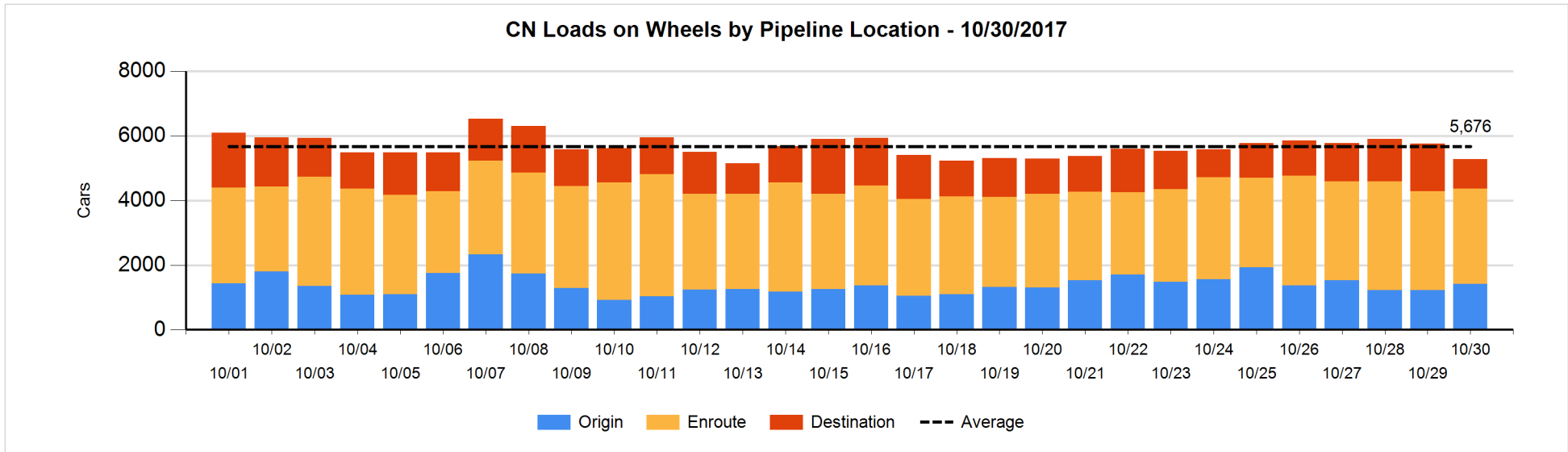


Daily Loads on Wheels By Pipeline Location - 10/30/2017

	E Canada	Prince Rupert	Thunder Bay	USA/MEX	Vancouver	Total
CN						
Origin	11	214	11	42	1,135	1,413
Enroute	190	872	329	243	1,321	2,955
Destination	33	176	225	26	452	912
	234	1,262	565	311	2,908	5,280
CP						
Origin	8		545	108	1,376	2,037
Enroute	59		410	239	1,196	1,904
Destination	3		362		593	958
	70		1,317	347	3,165	4,899
US Rail / Short Line						
Origin						
Enroute				219		219
Destination	15			59	15	89
	15			278	15	308

Change in Daily Loads on Wheels By Pipeline Location - Prior 24 Hours

	E Canada	Prince Rupert	Thunder Bay	USA/MEX	Vancouver	Total
CN						
Origin	5	-108	3	32	255	187
Enroute	-38	112	-53	-111	-19	-109
Destination	-2	-350	-45	12	-167	-552
	-35	-346	-95	-67	69	-474
CP						
Origin	-23		309	1	164	451
Enroute	21		13	97	-79	52
Destination	-3		-92		-64	-159
	-5		230	98	21	344
US Rail / Short Line						
Origin						
Enroute				-4		-4
Destination	7			5	-9	3
	7			1	-9	-1

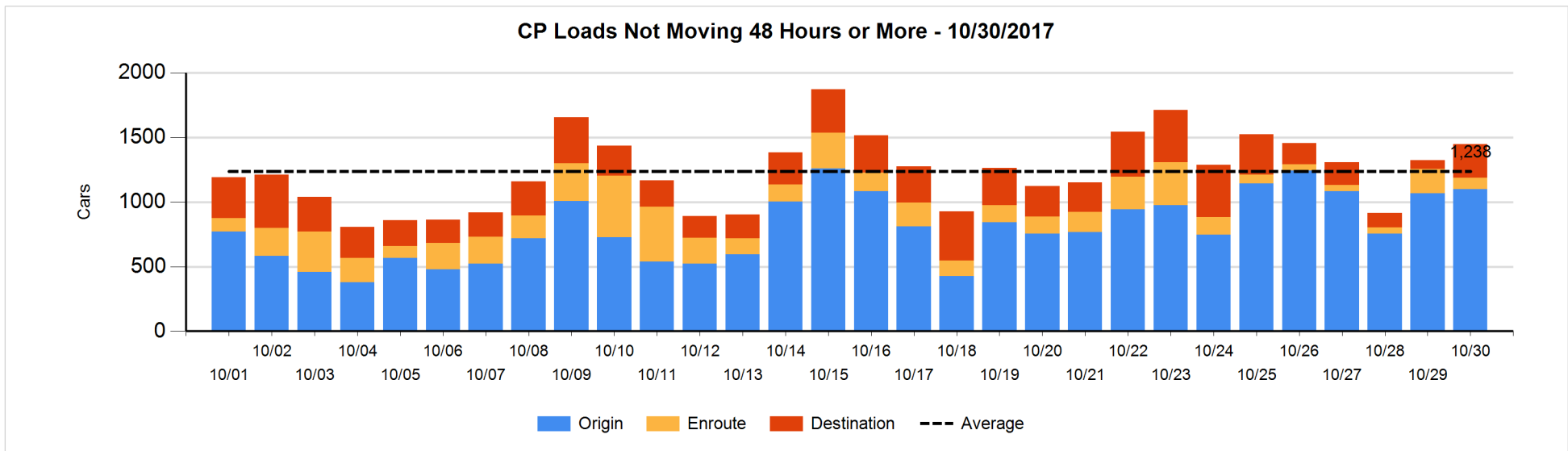
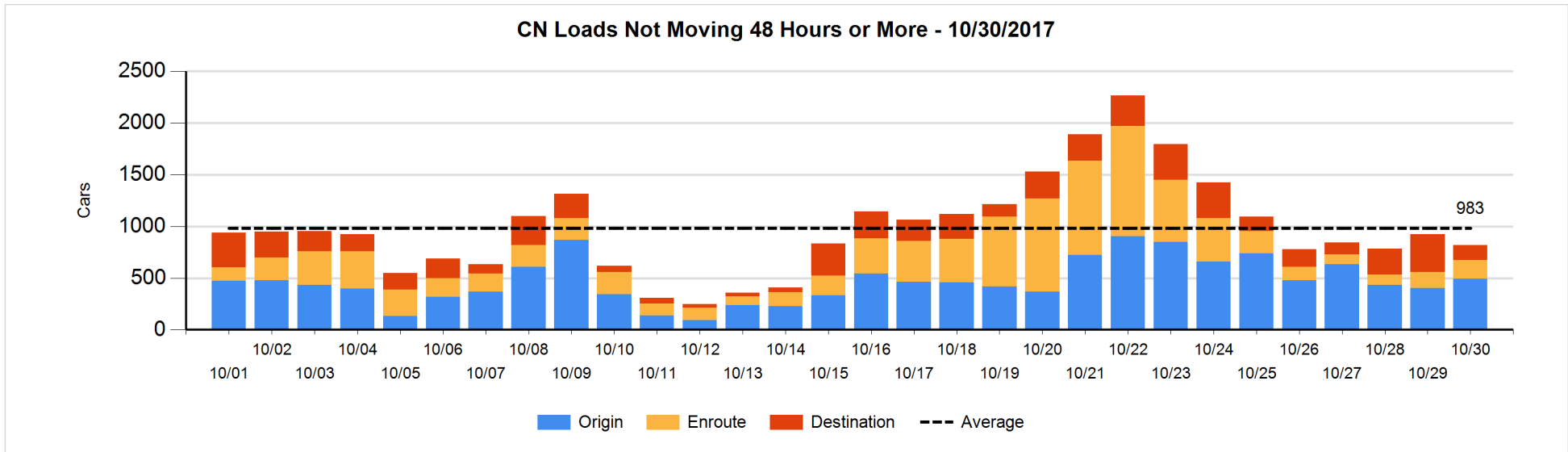


Loads Not Moving 48 Hours or More - 10/30/2017

	E Canada	Prince Rupert	Thunder Bay	USA/MEX	Vancouver	Total
CN						
Origin	2	213	8	10	258	491
Enroute	26	25	1	23	109	184
Destination	9	117	3	10	6	145
	37	355	12	43	373	820
CP						
Origin	6		234	106	754	1100
Enroute	2		3	34	50	89
Destination	1		58		199	258
	9		295	140	1003	1447
US Rail / Short Line						
Origin						
Enroute				82		82
Destination				21	6	27
				103	6	109

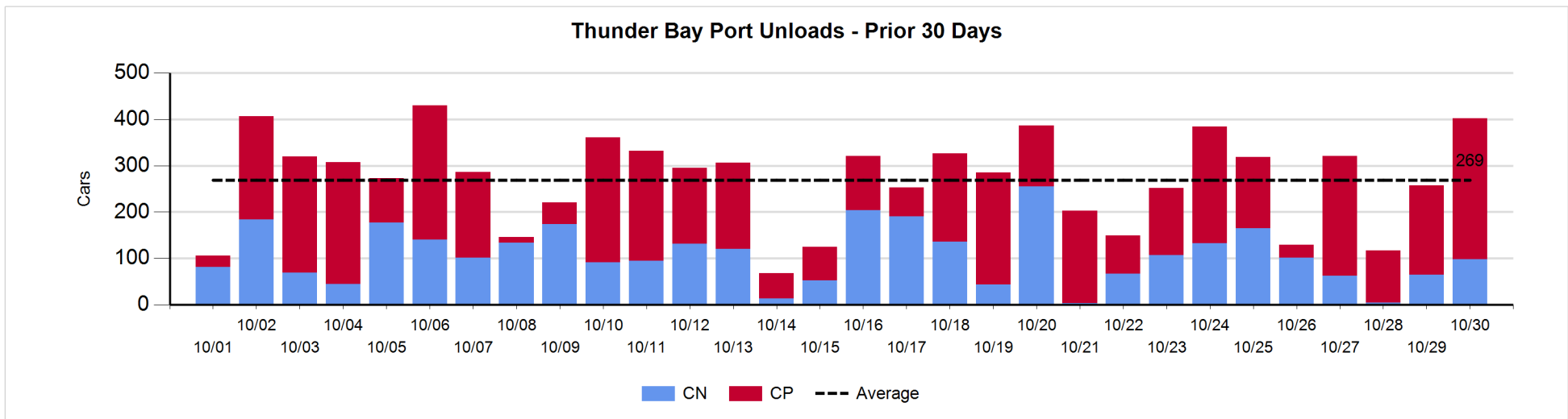
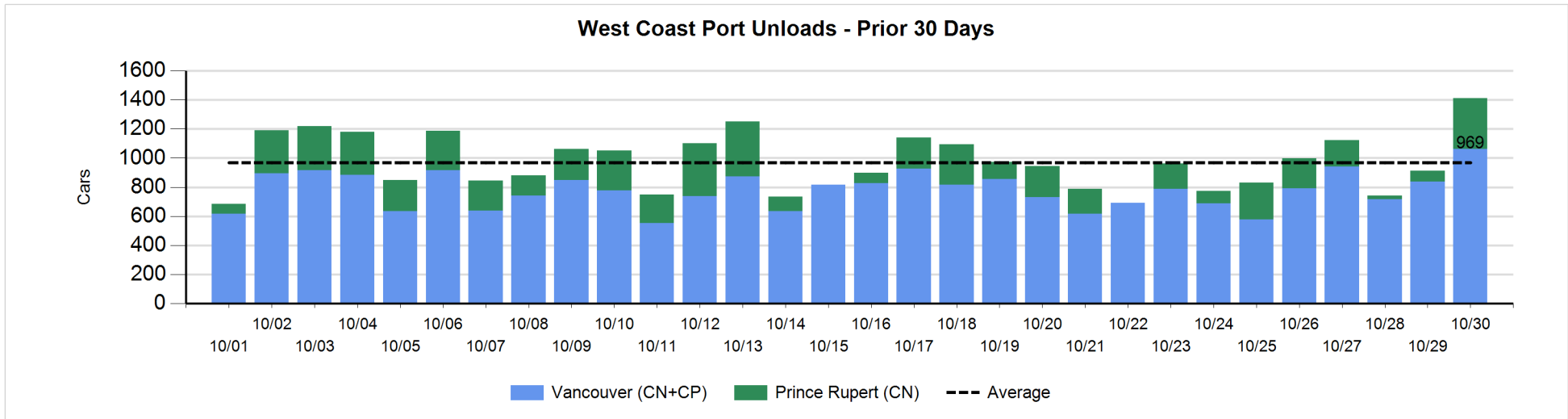
Change in Loads Not Moving 48 Hours or More - 10/30/2017

	E Canada	Prince Rupert	Thunder Bay	USA/MEX	Vancouver	Total
CN						
Origin	1	89	8	0	-9	89
Enroute	-22	4	0	-11	58	29
Destination	-25	-197	-4	4	1	-221
	-46	-104	4	-7	50	-103
CP						
Origin	-22		39	-1	15	31
Enroute	-1		0	-1	-95	-97
Destination	0		34		157	191
	-23		73	-2	77	125
US Rail / Short Line						
Origin						
Enroute				-6		-6
Destination				-4	-1	-5
				-10	-1	-11



Port Unloads - 10/30/2017

	Prince Rupert	Vancouver	West Coast Total	Thunder Bay	Total
CN	350	617	967	98	1,065
CP		444	444	304	748
	350	1,061	1,411	402	1,813



Port Terminal Status

Vancouver

Daily Activity for 10/30/2017

	Cars Arrived	Cars Received in Interchange	Cars Delivered in Interchange	Cars Placed for Unloading	Loads on Wheels at Destination As of 10/30/2017
CN	459	243	146	438	452
CP	368	146	265	525	593
SRY		22		6	15

Port Unloads

	10/30	10/29	Week To Date	Last Week
CN	617	499	617	2,728
CP	444	337	444	2,609
SRY	9	1	9	60

Age Profile of Loaded Cars Waiting Placement for Unloading

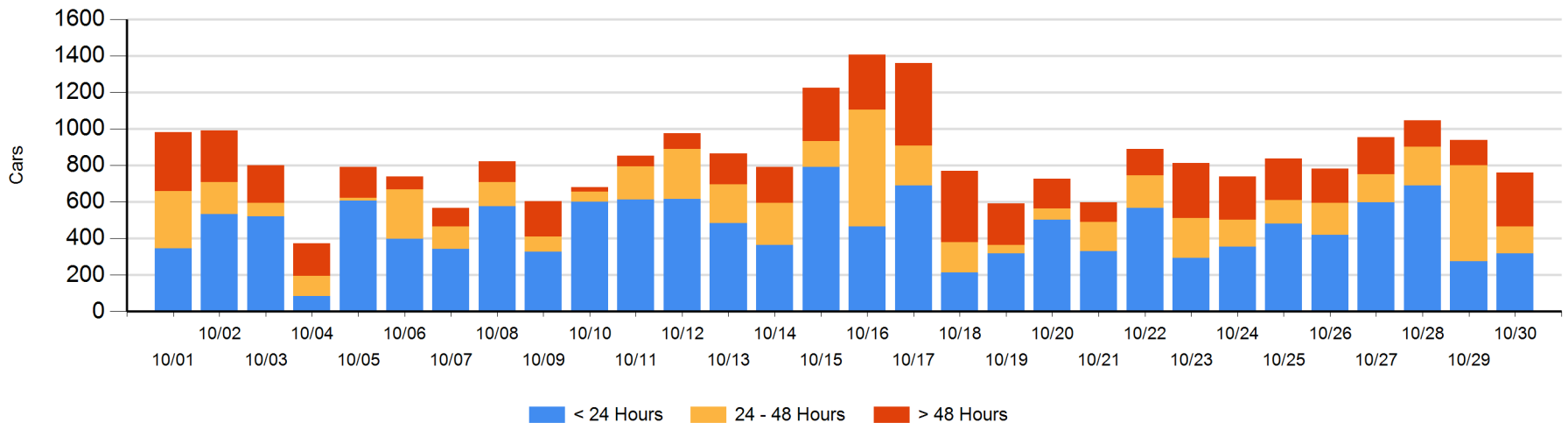
Today

	< 24 Hrs	24 - 48 Hrs	> 48-72 Hrs	> 72 Hrs	Total On Hand
CN	113	39	6		158
CP	205	110	180	107	602
SRY					0

Change in Last 24 Hours

	< 24 Hrs	24-48 Hrs	48 - 72 Hrs	> 72 Hrs
CN	24	18	-17	
CP	20	-395	158	14
SRY				

Loaded Cars on Hand Vancouver Waiting for Placement - Last 30 Days All Railways



Port Terminal Status

Prince Rupert

Daily Activity for 10/30/2017

	Cars Arrived	Cars Received in Interchange	Cars Delivered in Interchange	Cars Placed for Unloading	Loads on Wheels at Destination As of 10/30/2017
CN	11			3	176

Port Unloads

	10/30	10/29	Week To Date	Last Week
CN	350	77	350	1,002

Age Profile of Loaded Cars Waiting Placement for Unloading

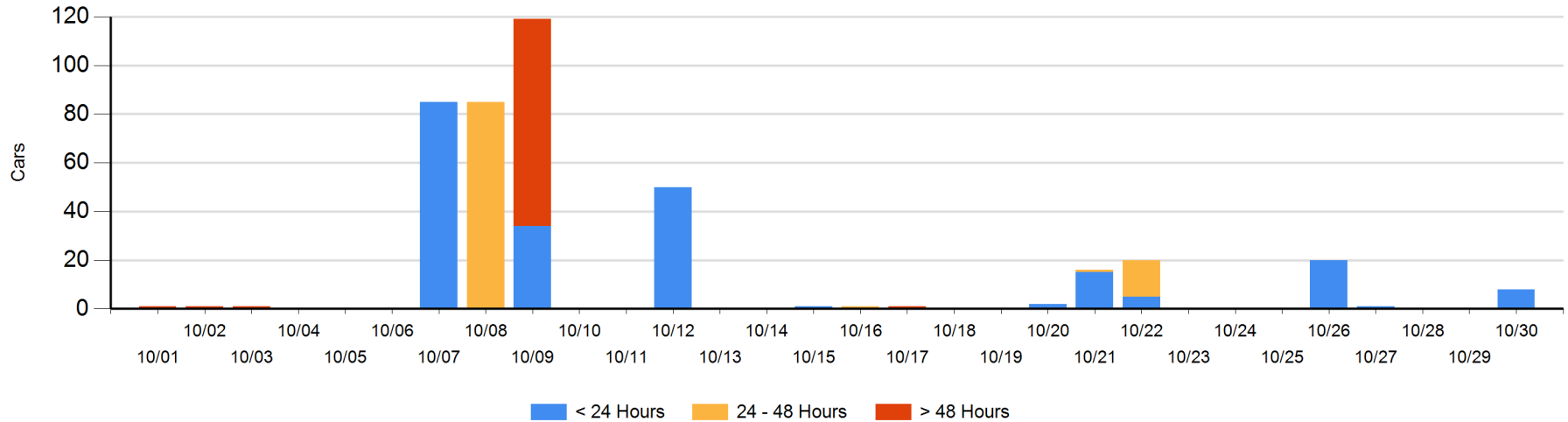
Today

	< 24 Hrs	24 - 48 Hrs	> 48-72 Hrs	> 72 Hrs	Total On Hand
CN	8				8

Change in Last 24 Hours

	< 24 Hrs	24-48 Hrs	48 - 72 Hrs	> 72 Hrs
CN	8			

Loaded Cars on Hand Prince Rupert Waiting for Placement - Last 30 Days All Railways



Port Terminal Status

Thunder Bay

Daily Activity for 10/30/2017

	Cars Arrived	Cars Received in Interchange	Cars Delivered in Interchange	Cars Placed for Unloading	Loads on Wheels at Destination As of 10/30/2017
CN	53			72	225
CP	211			279	362

Port Unloads

	10/30	10/29	Week To Date	Last Week
CN	98	65	98	639
CP	304	192	304	1,140

Age Profile of Loaded Cars Waiting Placement for Unloading

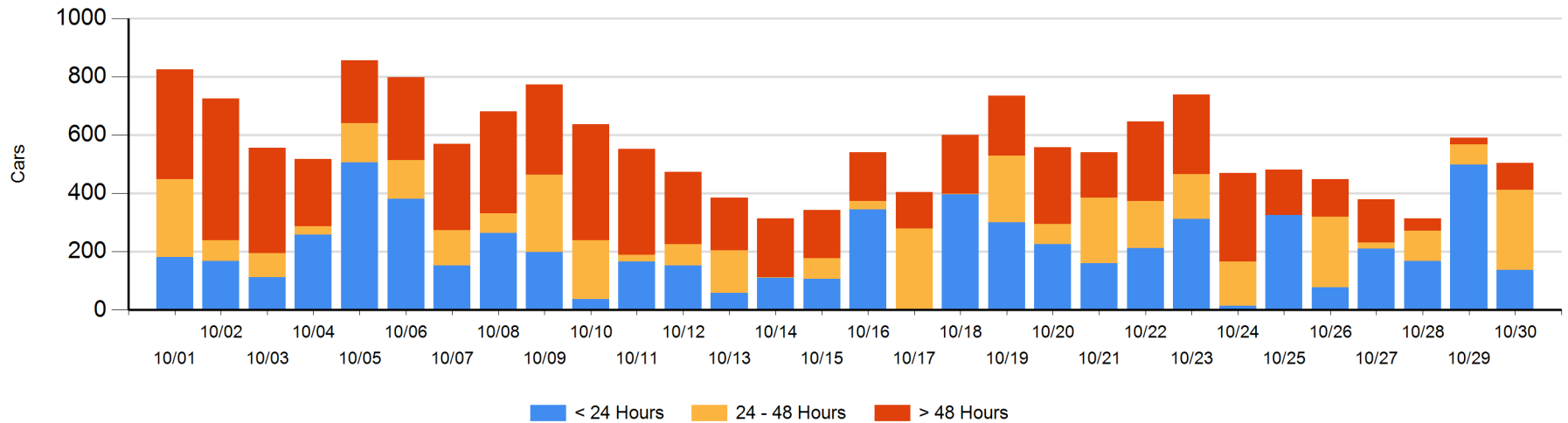
Today

	< 24 Hrs	24 - 48 Hrs	> 48-72 Hrs	> 72 Hrs	Total On Hand
CN	27	154			181
CP	111	120	69	23	323

Change in Last 24 Hours

	< 24 Hrs	24-48 Hrs	48 - 72 Hrs	> 72 Hrs
CN	-173	154		
CP	-187	50	62	7

Loaded Cars on Hand Thunder Bay Waiting for Placement - Last 30 Days All Railways



Measurement Definitions

Loads on Wheels	<p>Count of loaded rail cars including all rail cars that have been released loaded at origin and have not been reported by the railway as unloaded at destination.</p> <p>Counts include all rail cars (hopper cars and boxcars) moving within a pipeline.</p>
Loads Not Moving	<p>Loaded rail cars for which the railways have not reported a movement event for 48 hours or more whether the rail car is at origin, enroute or at destination.</p>
Port Unloads	<p>Count of rail cars reported by railways as unloaded at the western port destinations of Vancouver, Prince Rupert and Thunder Bay.</p> <p>Unload counts include all rail cars (hopper cars and boxcars) unloaded by all receivers including major port terminals, transloaders and other receivers.</p>
Cars Arrived	<p>Count of rail cars reported as arrived at the destination railway terminal.</p>
Cars Received in Interchange	<p>Count of rail cars received in interchange by each railway within a destination railway terminal. Interchange activity is tracked for the Vancouver and Thunder Bay pipelines as applicable.</p>
Cars Delivered in Interchange	<p>Count of rail cars delivered in interchange by each railway within a destination railway terminal. Interchange activity is tracked for the Vancouver and Thunder Bay pipelines as applicable.</p>
Cars Placed for Unloading	<p>Count of rail cars reported by the railways as placed loaded at the receiver's facility for unloading.</p>
Loads on Wheels at Destination	<p>Count of rail cars that remain under load within the destination railway terminal including rail cars that have been reported as placed for unloading but not yet reported as unloaded.</p>
Waiting Placement for Unloading	<p>Count of rail cars that have been reported as arrived at the destination railway terminal but not reported as placed for unloading by the railway.</p> <p>For the Ports of Vancouver, Prince Rupert and Thunder Bay the count of rail cars waiting placement for unloading is categorized by age – i.e. the elapsed time from arrival at destination to the current report date.</p>