

Loads on Wheels

- System wide loads on wheels decreased in the prior 24 hours and now sit at 9,409 - the lowest level in the prior 30 days and 11% below the trailing 30 day average
- In total loads on wheels declined by 598 cars reflecting a decrease of 711 cars on CN coupled with no change in volumes on CP and an increase in loads on wheels in the US reflecting traffic interchanged to US carriers
- CN loads on wheels declined primarily in the Vancouver (-510) and Prince Rupert (-164) corridors. System wide CN loads on wheels now below 4,800 and at their lowest level in the prior 30 days.
- CP volumes decreased marginally in the Eastern Canada and Thunder Bay corridors offset by increases in other corridors. System wide loads on wheels remain below 4,300.
- Vancouver now at 5,286 - the lowest level in the prior 30 days, Prince Rupert at 1,377 and Thunder Bay at 1,321 - all pipelines currently 10% or more lower than their trailing 30 day averages
- CN volumes in all western port corridors being impacted by hopper car rationing with CN rationing a total of 1,270 orders in week 14 and an estimated 630 orders in week 15 - rationed orders by corridor over the last 2 weeks include:
 - Vancouver (1,005), Prince Rupert (428) and Thunder Bay (468)

Loads Not Moving

- The count of loaded cars not moving for 48 hours increased marginally (80 cars) in the prior 24 hours; total cars on CN and CP not moving for 48 hours or more now at 1,770
- The majority of cars continue to dwell at origin for both railways
- CN
 - The count of cars not moving declined by 41 cars on a net basis - loads on wheels now idle for 48 hours or more at 798
 - Counts declined in all corridors other than Prince Rupert which increased by more than 200 cars and now sits at more than 350 cars almost all at origin and half of which have not moved in 7 days or more
 - More than 60% of cars are dwelling at origin locations
- CP
 - CP counts increased nominally - 75 cars in total reflecting a 163 car increase in the Vancouver corridor offset by declines in the Thunder Bay and Eastern Canada corridors - idle cars now at 972
 - More than 80% of cars dwelling at origin with 762 destined to Vancouver

Port Performance

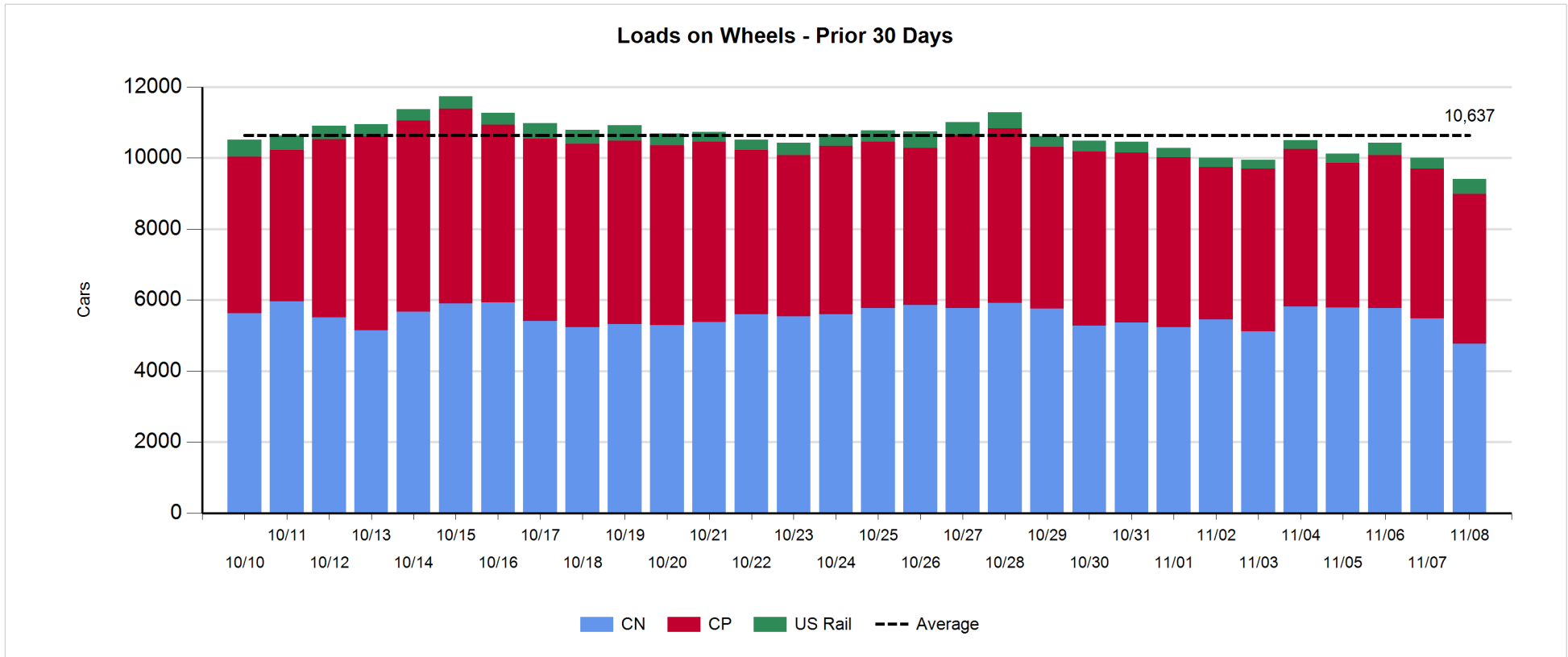
- CN and CP unloaded a total of 1,577 cars at the three western ports
- Vancouver
 - Total of 937 cars reported unloaded by CN and CP at the Port of Vancouver; CN - 543 and CP - 394
 - There are currently 1,104 cars at Vancouver waiting placement for unloading split roughly equally between CN and CP with 75% of them having arrived in the prior 24 hours
- Thunder Bay
 - 396 unloads at Thunder Bay - 96% CP
 - Cars at Thunder Bay waiting placement now at 427 split evenly between CN and CP

Daily Loads on Wheels - 11/8/2017

	E Canada	Prince Rupert	Thunder Bay	USA/MEX	Vancouver	Total
CN	202	1,377	530	233	2,430	4,772
CP	98		791	504	2,823	4,216
Short Line	19				33	52
US Rail				369		369
	319	1,377	1,321	1,106	5,286	9,409

Change in Loads on Wheels - Prior 24 Hours

	E Canada	Prince Rupert	Thunder Bay	USA/MEX	Vancouver	Total
CN	-4	-164	88	-121	-510	-711
CP	-48		-70	85	34	1
Short Line	19				-8	11
US Rail				101		101
	-33	-164	18	65	-484	-598

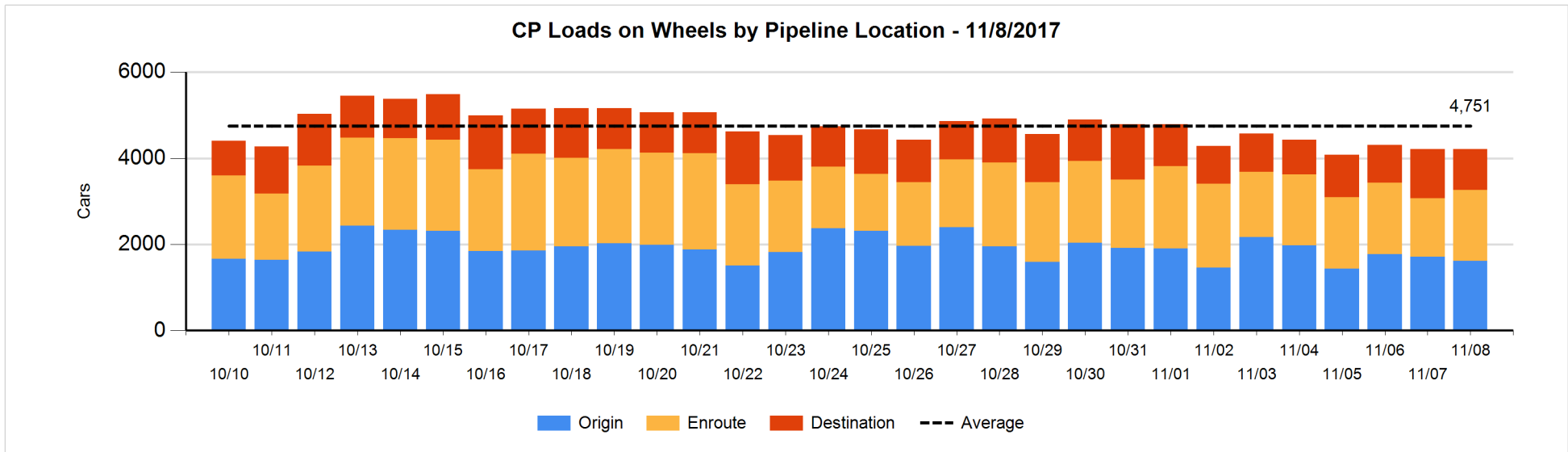
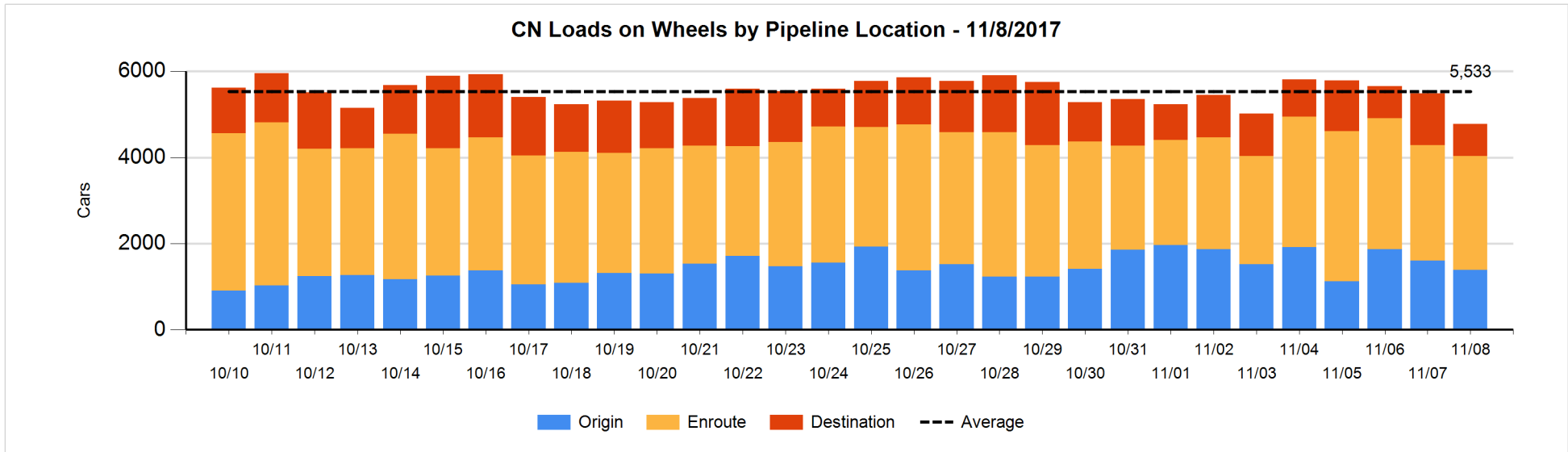


Daily Loads on Wheels By Pipeline Location - 11/8/2017

	E Canada	Prince Rupert	Thunder Bay	USA/MEX	Vancouver	Total
CN						
Origin	9	564	157	52	608	1,390
Enroute	175	773	115	176	1,406	2,645
Destination	18	40	258	5	416	737
	202	1,377	530	233	2,430	4,772
CP						
Origin	30		205	186	1,193	1,614
Enroute	66		342	318	928	1,654
Destination	2		244		701	947
	98		791	504	2,822	4,215
US Rail / Short Line						
Origin						
Enroute				199		199
Destination	19			170	33	222
	19			369	33	421

Change in Daily Loads on Wheels By Pipeline Location - Prior 24 Hours

	E Canada	Prince Rupert	Thunder Bay	USA/MEX	Vancouver	Total
CN						
Origin	-49	-60	103	7	-218	-217
Enroute	61	142	-100	-28	-109	-34
Destination	-16	-246	85	-100	-183	-460
	-4	-164	88	-121	-510	-711
CP						
Origin	-45		-12	-36	-3	-96
Enroute	-4		268	128	-103	289
Destination	1		-326	-7	140	-192
	-48		-70	85	34	1
US Rail / Short Line						
Origin						
Enroute				-20		-20
Destination	19			121	-8	132
	19			101	-8	112

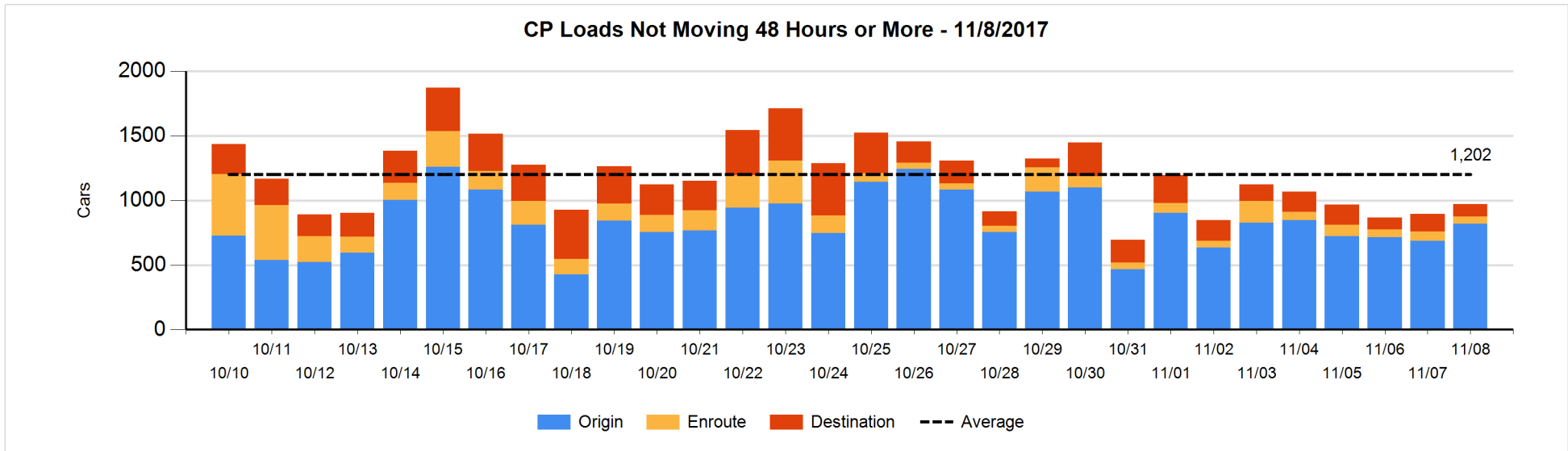
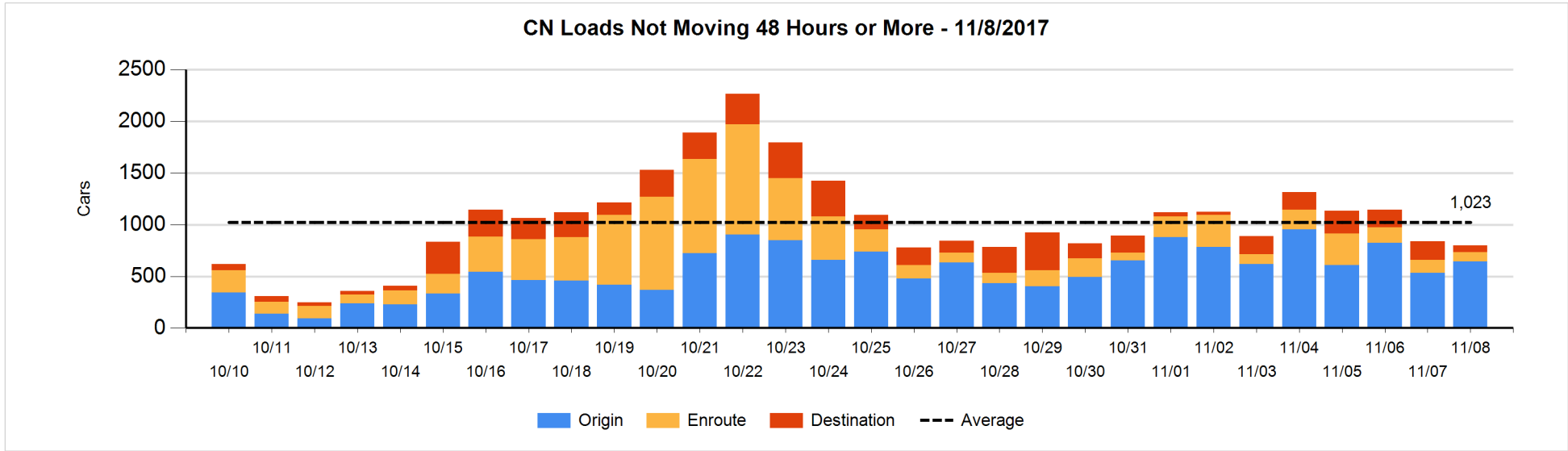


Loads Not Moving 48 Hours or More - 11/8/2017

	E Canada	Prince Rupert	Thunder Bay	USA/MEX	Vancouver	Total
CN						
Origin	6	360	1	7	271	645
Enroute	15	11		34	30	90
Destination	4	13	1	5	40	63
	25	384	2	46	341	798
CP						
Origin	5			53	762	820
Enroute	1		4	2	48	55
Destination	1		95		1	97
	7		99	55	811	972
US Rail / Short Line						
Origin						
Enroute				98		98
Destination				43	1	44
				141	1	142

Change in Loads Not Moving 48 Hours or More - 11/8/2017

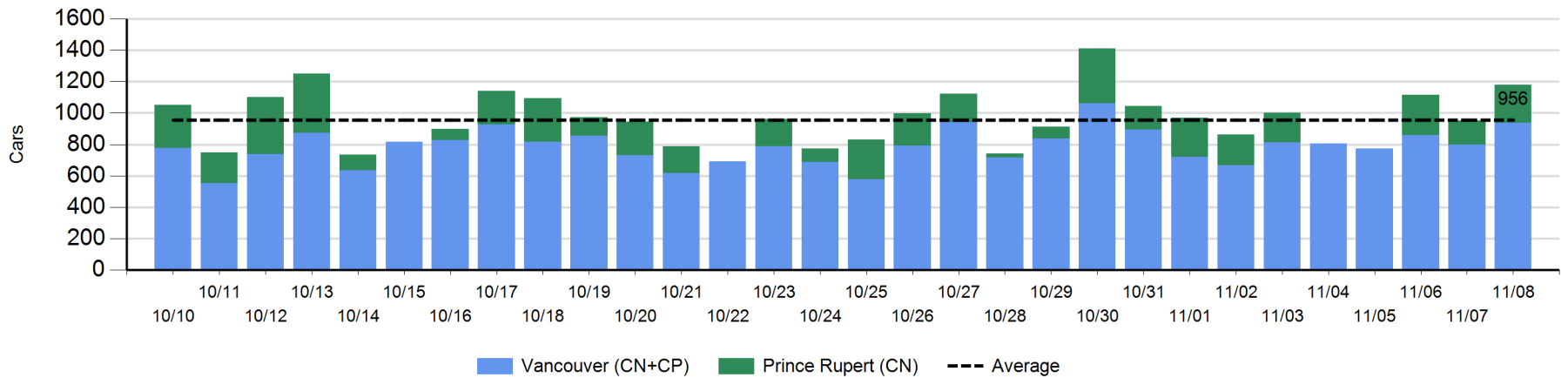
	E Canada	Prince Rupert	Thunder Bay	USA/MEX	Vancouver	Total
CN						
Origin	0	208	0	0	-94	114
Enroute	8	0		-43	-2	-37
Destination	-12	-1	-1	5	-109	-118
	-4	207	-1	-38	-205	-41
CP						
Origin	-46			1	179	134
Enroute	-1		0	0	-16	-17
Destination	0		-42		0	-42
	-47		-42	1	163	75
US Rail / Short Line						
Origin						
Enroute				7		7
Destination				38	1	39
				45	1	46



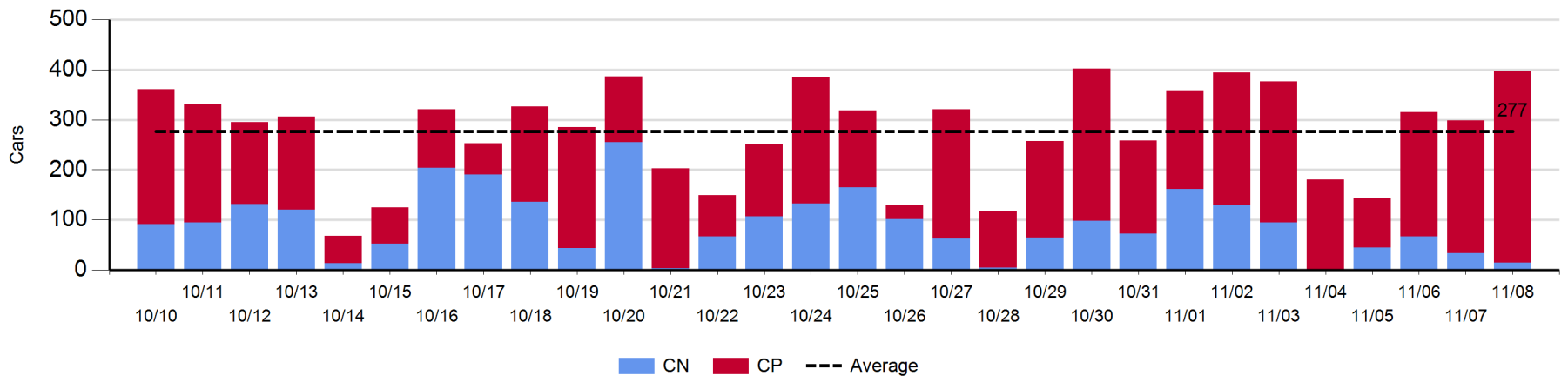
Port Unloads - 11/8/2017

	Prince Rupert	Vancouver	West Coast Total	Thunder Bay	Total
CN	244	543	787	15	802
CP		394	394	381	775
	244	937	1,181	396	1,577

West Coast Port Unloads - Prior 30 Days



Thunder Bay Port Unloads - Prior 30 Days



Port Terminal Status

Vancouver

Daily Activity for 11/8/2017

	Cars Arrived	Cars Received in Interchange	Cars Delivered in Interchange	Cars Placed for Unloading	Loads on Wheels at Destination As of 11/8/2017
CN	556	6	203	307	416
CP	343	198	6	253	701
SRY	1	5		16	33

Port Unloads

	11/08	11/07	Week To Date	Last Week
CN	543	377	1,487	3,040
CP	394	423	1,109	2,691
SRY	15	10	34	52

Age Profile of Loaded Cars Waiting Placement for Unloading

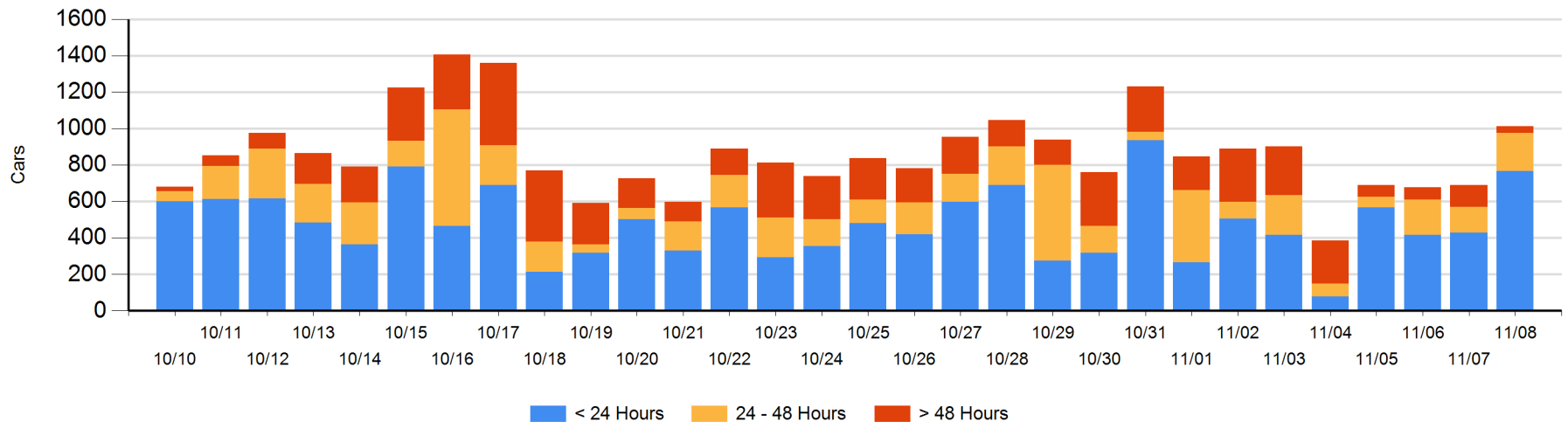
Today

	< 24 Hrs	24 - 48 Hrs	> 48-72 Hrs	> 72 Hrs	Total On Hand
CN	434	99	5	10	548
CP	334	110	9	13	466
SRY					0

Change in Last 24 Hours

	< 24 Hrs	24-48 Hrs	48 - 72 Hrs	> 72 Hrs
CN	239	2	-1	7
CP	99	66	-44	-43
SRY				

Loaded Cars on Hand Vancouver Waiting for Placement - Last 30 Days All Railways



Port Terminal Status

Prince Rupert

Daily Activity for 11/8/2017

	Cars Arrived	Cars Received in Interchange	Cars Delivered in Interchange	Cars Placed for Unloading	Loads on Wheels at Destination As of 11/8/2017
CN				108	40

Port Unloads

	11/08	11/07	Week To Date	Last Week
CN	244	153	652	1,134

Age Profile of Loaded Cars Waiting Placement for Unloading

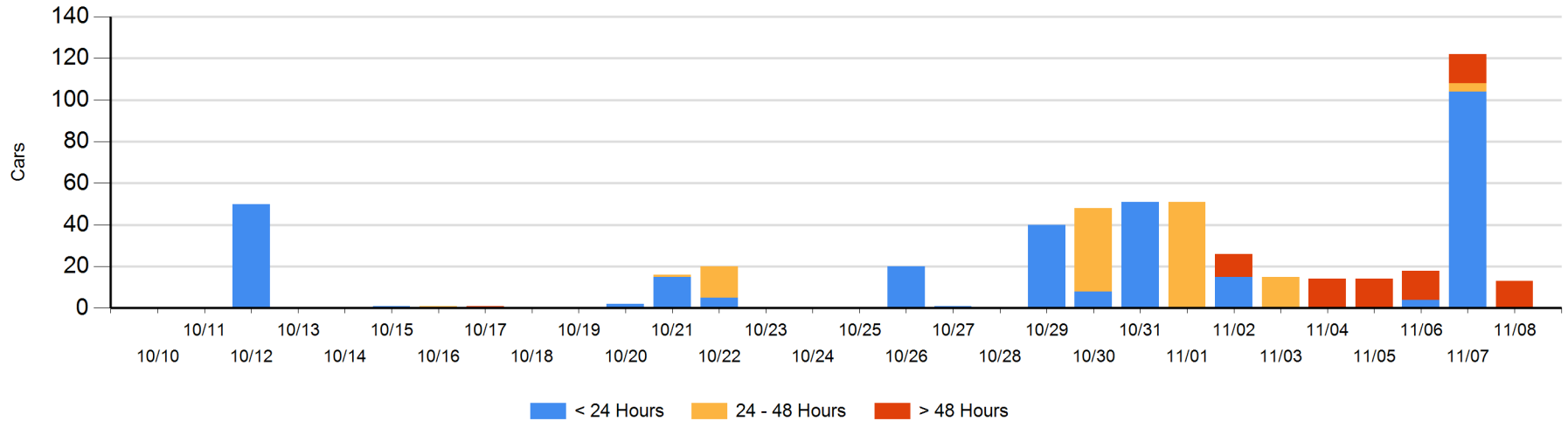
Today

	< 24 Hrs	24 - 48 Hrs	> 48-72 Hrs	> 72 Hrs	Total On Hand
CN				13	13

Change in Last 24 Hours

	< 24 Hrs	24-48 Hrs	48 - 72 Hrs	> 72 Hrs
CN	-104	-4		-1

Loaded Cars on Hand Prince Rupert Waiting for Placement - Last 30 Days All Railways



Port Terminal Status

Thunder Bay

Daily Activity for 11/8/2017

	Cars Arrived	Cars Received in Interchange	Cars Delivered in Interchange	Cars Placed for Unloading	Loads on Wheels at Destination As of 11/8/2017
CN	100			56	258
CP	56			293	244

Port Unloads

	11/08	11/07	Week To Date	Last Week
CN	15	34	116	602
CP	381	265	894	1,512

Age Profile of Loaded Cars Waiting Placement for Unloading

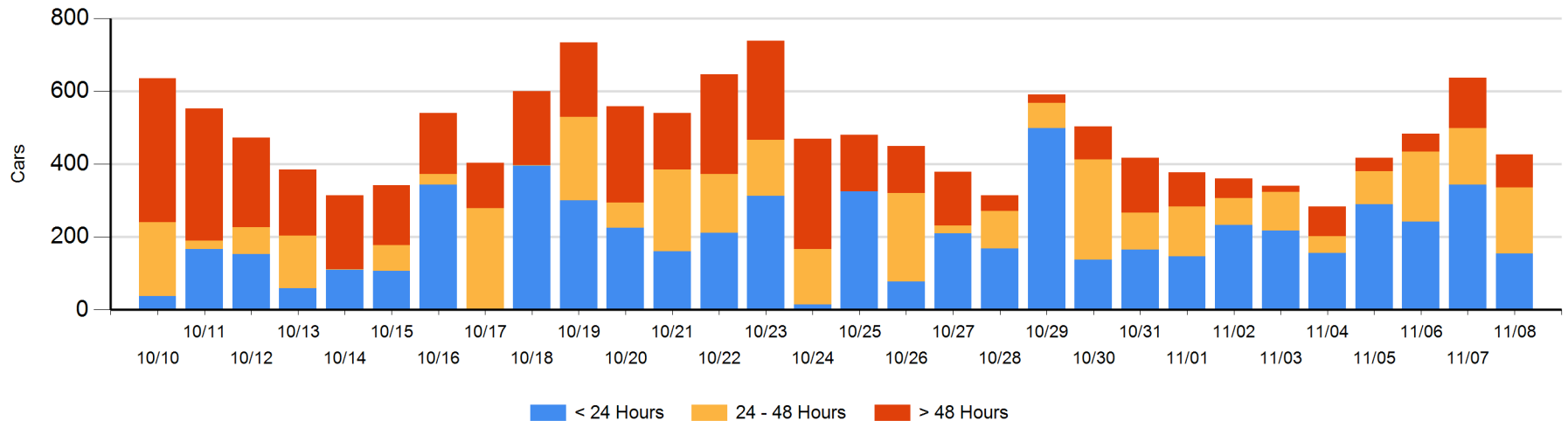
Today

	< 24 Hrs	24 - 48 Hrs	> 48-72 Hrs	> 72 Hrs	Total On Hand
CN	100	115			215
CP	55	66	79	12	212

Change in Last 24 Hours

	< 24 Hrs	24-48 Hrs	48 - 72 Hrs	> 72 Hrs
CN	-71	115		
CP	-117	-89	-21	-27

Loaded Cars on Hand Thunder Bay Waiting for Placement - Last 30 Days All Railways



Measurement Definitions

Loads on Wheels	<p>Count of loaded rail cars including all rail cars that have been released loaded at origin and have not been reported by the railway as unloaded at destination.</p> <p>Counts include all rail cars (hopper cars and boxcars) moving within a pipeline.</p>
Loads Not Moving	<p>Loaded rail cars for which the railways have not reported a movement event for 48 hours or more whether the rail car is at origin, enroute or at destination.</p>
Port Unloads	<p>Count of rail cars reported by railways as unloaded at the western port destinations of Vancouver, Prince Rupert and Thunder Bay.</p> <p>Unload counts include all rail cars (hopper cars and boxcars) unloaded by all receivers including major port terminals, transloaders and other receivers.</p>
Cars Arrived	<p>Count of rail cars reported as arrived at the destination railway terminal.</p>
Cars Received in Interchange	<p>Count of rail cars received in interchange by each railway within a destination railway terminal. Interchange activity is tracked for the Vancouver and Thunder Bay pipelines as applicable.</p>
Cars Delivered in Interchange	<p>Count of rail cars delivered in interchange by each railway within a destination railway terminal. Interchange activity is tracked for the Vancouver and Thunder Bay pipelines as applicable.</p>
Cars Placed for Unloading	<p>Count of rail cars reported by the railways as placed loaded at the receiver's facility for unloading.</p>
Loads on Wheels at Destination	<p>Count of rail cars that remain under load within the destination railway terminal including rail cars that have been reported as placed for unloading but not yet reported as unloaded.</p>
Waiting Placement for Unloading	<p>Count of rail cars that have been reported as arrived at the destination railway terminal but not reported as placed for unloading by the railway.</p> <p>For the Ports of Vancouver, Prince Rupert and Thunder Bay the count of rail cars waiting placement for unloading is categorized by age – i.e. the elapsed time from arrival at destination to the current report date.</p>