

## Loads on Wheels

- System wide loads on wheels declined in the prior 24 hours - loads now at 10,851 - 3% higher than the trailing 30 day average
- In total loads on wheels decreased by 94 cars reflecting a decline in volumes for CN (-174) with little change on CP - counts also increased for traffic moving on US carriers.
- CN volumes declined across all corridors other than Thunder Bay with the largest declines seen in the USA and Prince Rupert corridors. System wide CN loads on wheels are now at 5,240 - 4% below the trailing 30 day average.
- CP volumes were unchanged on a net basis with Vancouver down (-191) offset by increases in the Thunder Bay (+103) and US (+91) corridors. System wide loads at 5,206 - 8% above the trailing 30 day average.
- Vancouver now above 7,100 - above the 7,000 mark for the fifth consecutive day - Prince Rupert at 1,110 - down 25% in the last 5 days - and Thunder Bay at 1,205.
- CN volumes continue to be below the trailing 30 day average in two of three western port corridors - Thunder Bay (-15%) and Prince Rupert (- 25%). Volumes in these corridors continue to be impacted by CN's hopper car rationing policy.

## Loads Not Moving

- The count of loaded cars not moving on CN and CP for 48 hours or more increased by 818 cars in the prior 24 hours; total cars on CN and CP not moving for 48 hours or more now nearing 3,000
- CN
  - The count of cars not moving increased by 209 cars on a net basis - loads on wheels now idle for 48 hours or more at 1,324
  - The increase is primarily attributable to higher counts in the Vancouver corridor (+169).
  - 83% of cars (1,094) are dwelling at origin locations with nearly all of them destined to Vancouver
- CP
  - CP counts increased by 609 cars in total - attributable primarily to the Vancouver corridor (+472) - idle cars now at 1,644
  - 94% of cars are dwelling at origin - 1,543 cars - 84% of them destined to Vancouver.

## Port Performance

- CN and CP unloaded a total of 991 cars at the three western ports - in line with average Saturday performance during the prior 30 days. Through the first 6 days of week 16 west coast unloads are running more than 700 unloads behind last week attributable to lower unloads at Vancouver (-477).
- Vancouver
  - Total of 871 cars reported unloaded by CN and CP at the Port of Vancouver; CN - 357 and CP - 514
  - There are currently 1,280 cars on hand at Vancouver waiting placement for unloading with more than 1,100 cars arriving at the port in the prior 24 hours
- Thunder Bay
  - Total of 5 cars reported as unloaded in the prior 24 hours - all CP
  - Cars at Thunder Bay waiting placement now at 210 - all CP

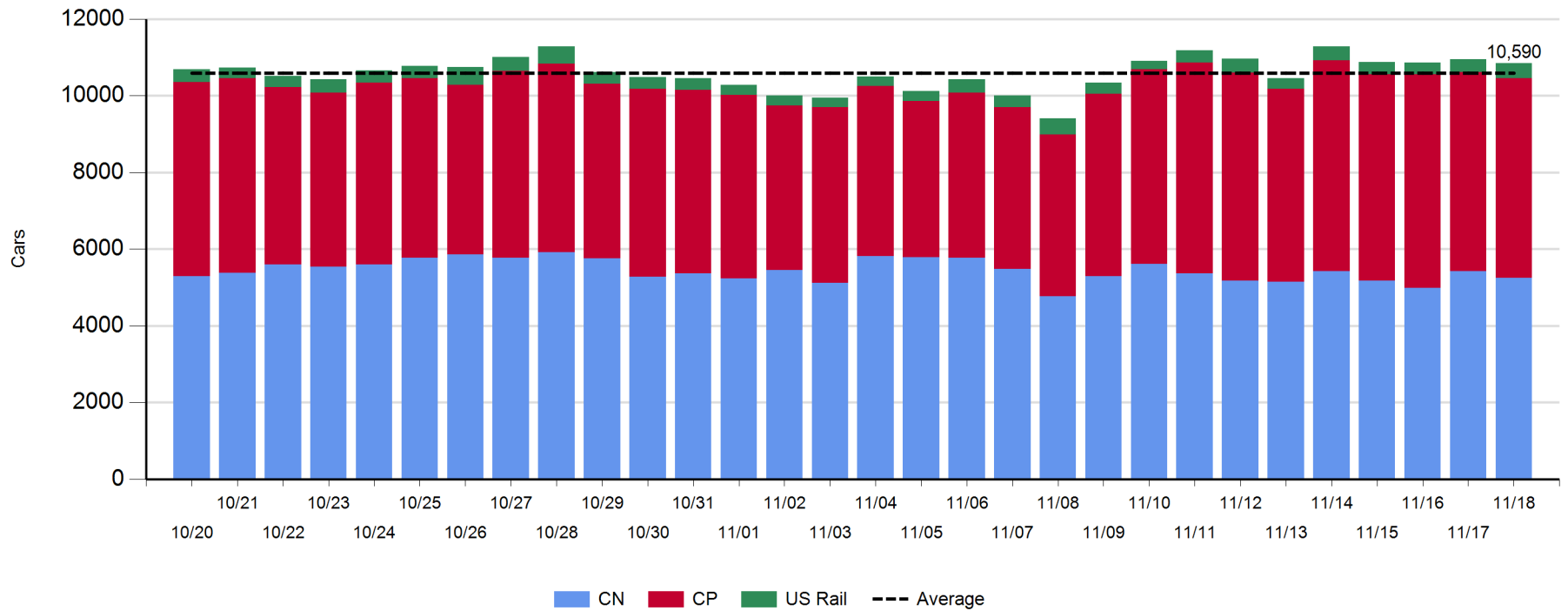
**Daily Loads on Wheels - 11/18/2017**

	E Canada	Prince Rupert	Thunder Bay	USA/MEX	Vancouver	Total
CN	350	1,110	416	400	2,964	5,240
CP	80		789	186	4,151	5,206
Short Line	6				41	47
US Rail				358		358
	436	1,110	1,205	944	7,156	10,851

**Change in Loads on Wheels - Prior 24 Hours**

	E Canada	Prince Rupert	Thunder Bay	USA/MEX	Vancouver	Total
CN	-17	-77	102	-121	-61	-174
CP	6		103	91	-191	9
Short Line	0				-3	-3
US Rail				74		74
	-11	-77	205	44	-255	-94

**Loads on Wheels - Prior 30 Days**

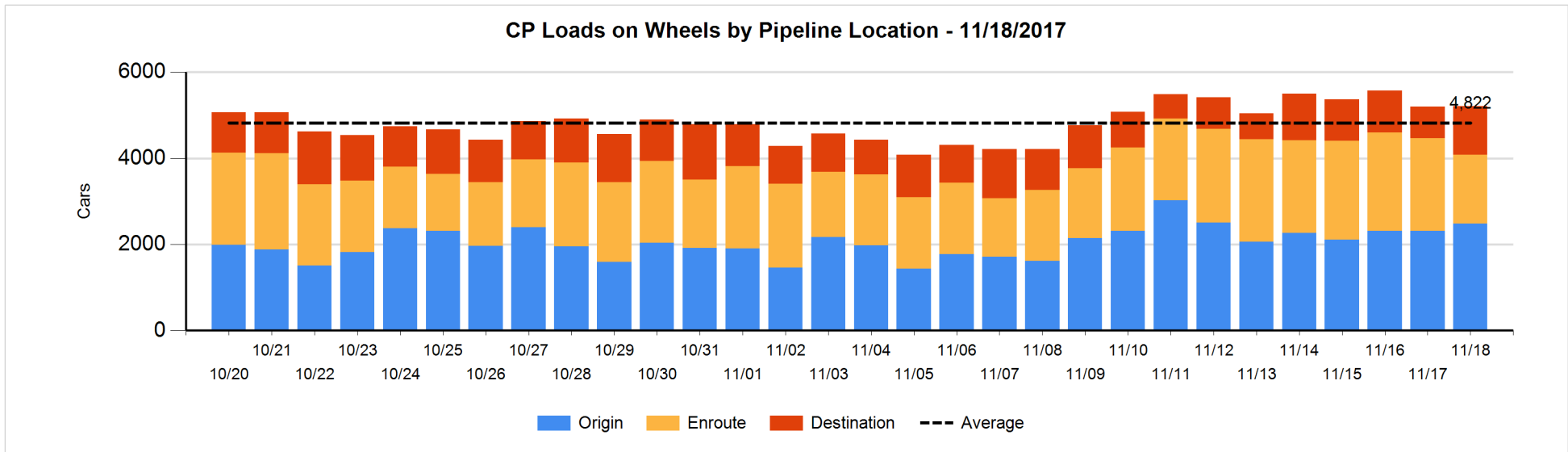
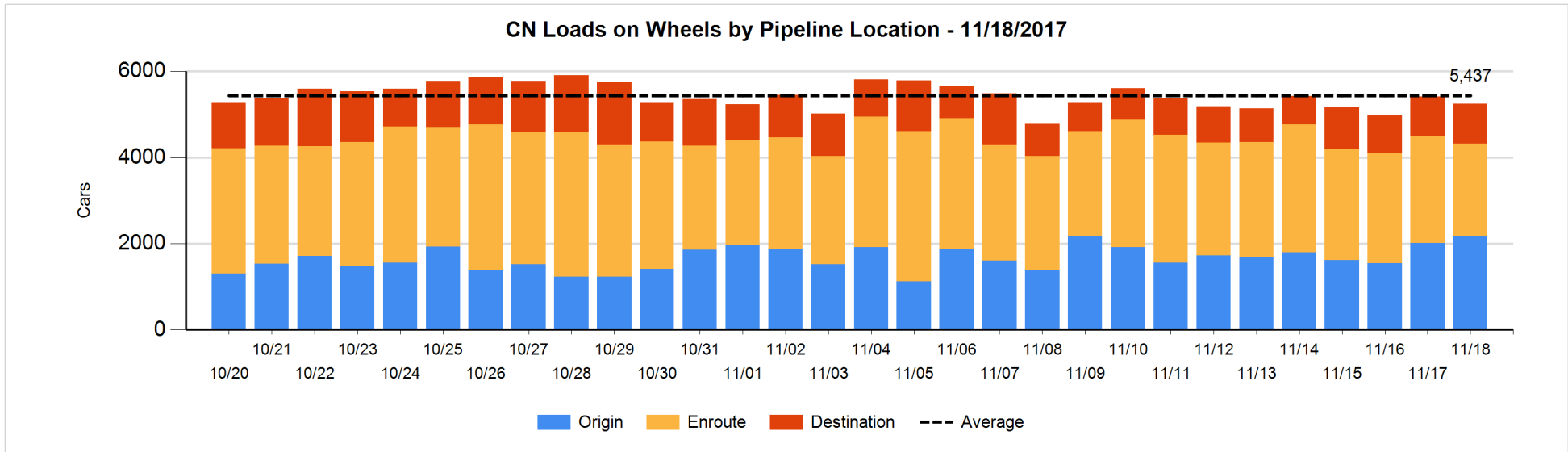


**Daily Loads on Wheels By Pipeline Location - 11/18/2017**

	E Canada	Prince Rupert	Thunder Bay	USA/MEX	Vancouver	Total
CN						
Origin		231	203	137	1,598	2,169
Enroute	275	670	153	250	807	2,155
Destination	75	209	60	13	559	916
	350	1,110	416	400	2,964	5,240
CP						
Origin	6		464	126	1,883	2,479
Enroute	54		111	32	1,399	1,596
Destination	20		214	28	868	1,130
	80		789	186	4,150	5,205
US Rail / Short Line						
Origin						
Enroute	1			273		274
Destination	5			85	41	131
	6			358	41	405

**Change in Daily Loads on Wheels By Pipeline Location - Prior 24 Hours**

	E Canada	Prince Rupert	Thunder Bay	USA/MEX	Vancouver	Total
CN						
Origin	-126	-19	3	41	259	158
Enroute	124	-143	99	-70	-346	-336
Destination	-15	85	0	-92	26	4
	-17	-77	102	-121	-61	-174
CP						
Origin	-13		-3	97	90	171
Enroute	19		-67	-11	-506	-565
Destination	0		173	5	225	403
	6		103	91	-191	9
US Rail / Short Line						
Origin						
Enroute	0			53		53
Destination	0			21	-3	18
	0			74	-3	71

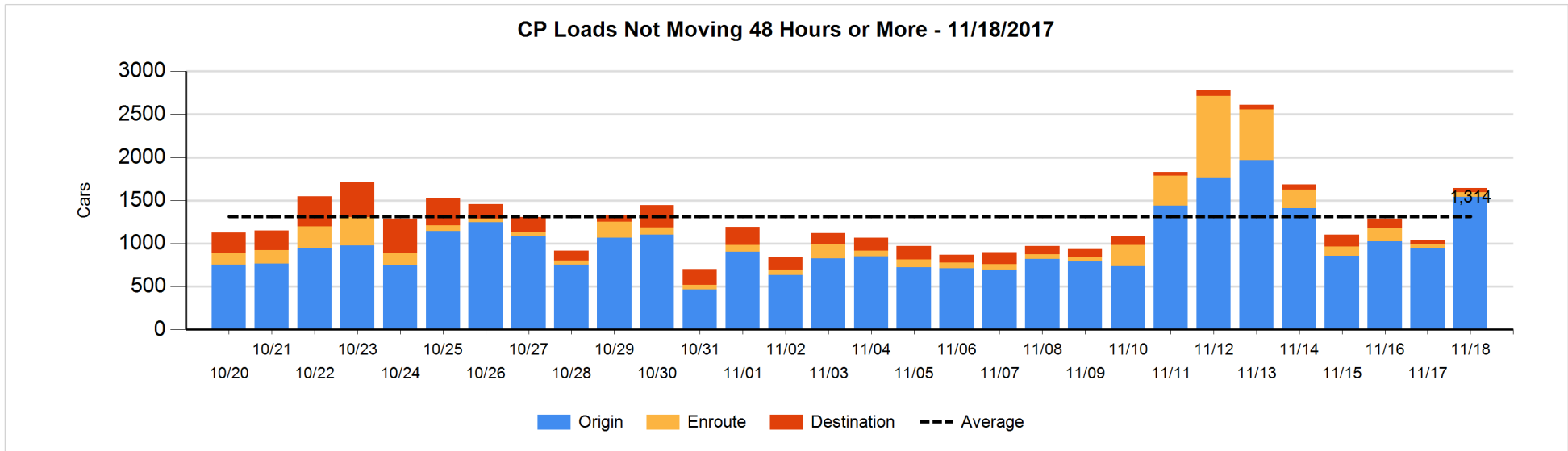
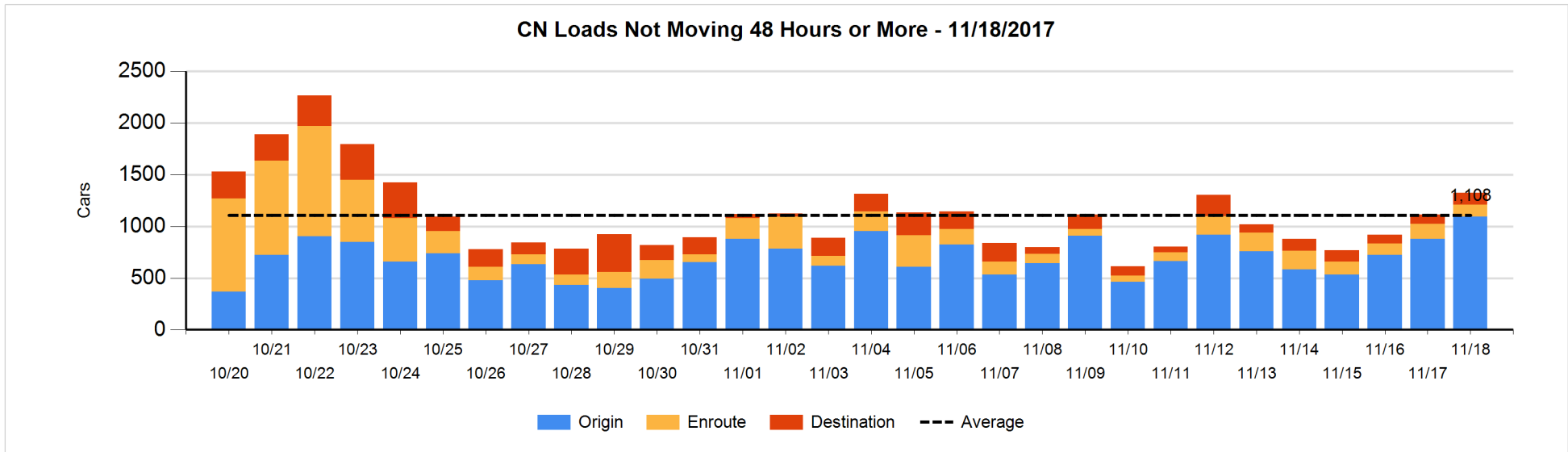


**Loads Not Moving 48 Hours or More - 11/18/2017**

	E Canada	Prince Rupert	Thunder Bay	USA/MEX	Vancouver	Total
<b>CN</b>						
Origin		94		2	998	1094
Enroute	14	25		11	64	114
Destination	68	2	3	13	30	116
	82	121	3	26	1092	1324
<b>CP</b>						
Origin			218	29	1296	1543
Enroute	9			6	36	51
Destination	9		36		5	50
	18		254	35	1337	1644
<b>US Rail / Short Line</b>						
Origin						
Enroute				30		30
Destination	5			36	3	44
	5			66	3	74

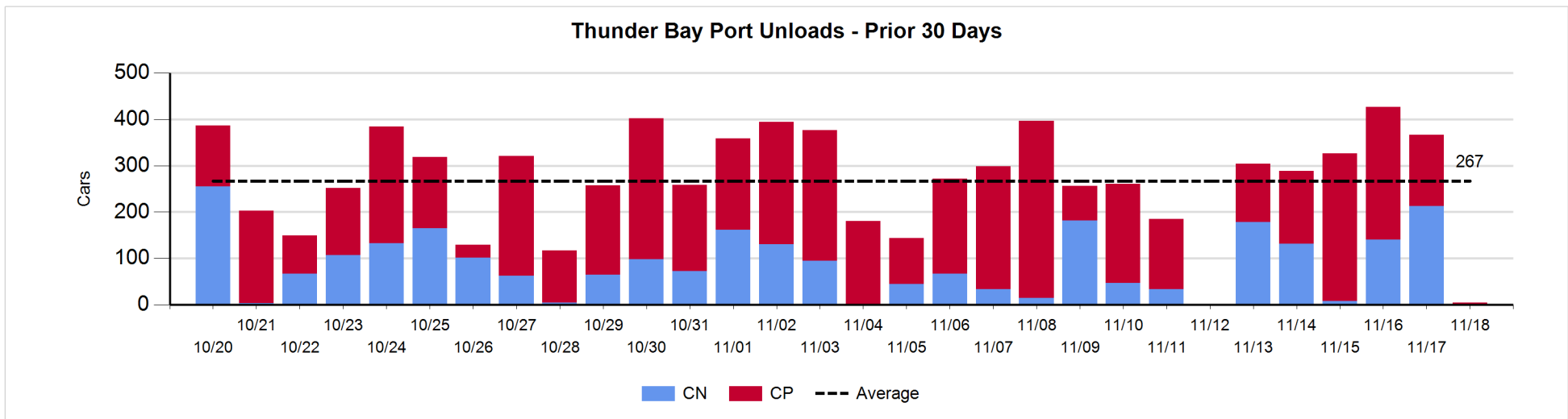
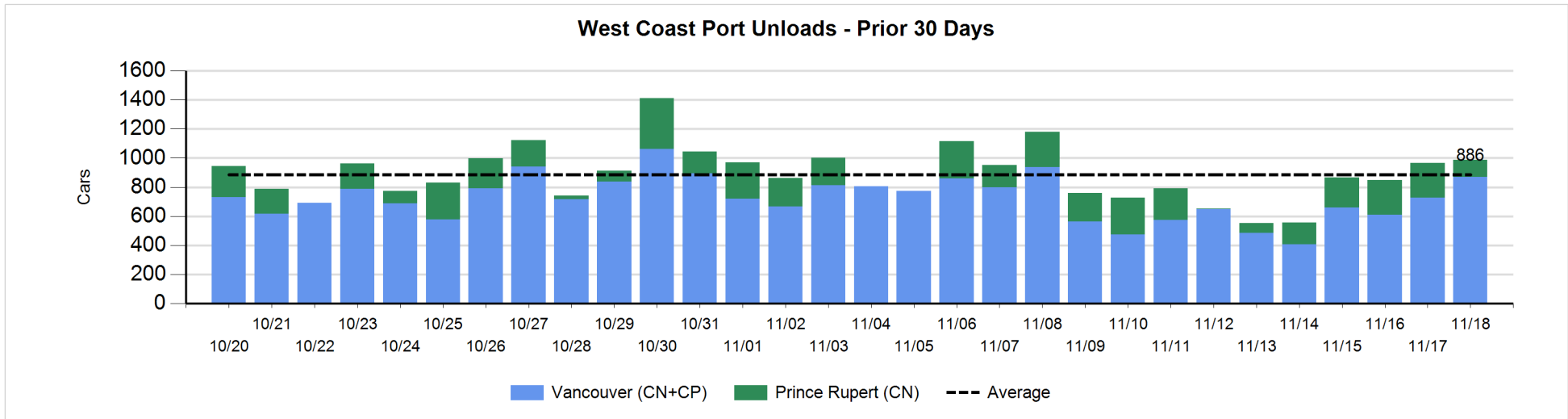
**Change in Loads Not Moving 48 Hours or More - 11/18/2017**

	E Canada	Prince Rupert	Thunder Bay	USA/MEX	Vancouver	Total
<b>CN</b>						
Origin		0		-1	218	217
Enroute	4	20		3	-62	-35
Destination	9	0	2	3	13	27
	13	20	2	5	169	209
<b>CP</b>						
Origin	-1		110	27	466	602
Enroute	1			0	4	5
Destination	0		0		2	2
	0		110	27	472	609
<b>US Rail / Short Line</b>						
Origin						
Enroute				8		8
Destination	5			-6	-2	-3
	5			2	-2	5



**Port Unloads - 11/18/2017**

	Prince Rupert	Vancouver	West Coast Total	Thunder Bay	Total
CN	115	357	472		472
CP		514	514	5	519
	115	871	986	5	991



**Port Terminal Status**

**Vancouver**

Daily Activity for 11/18/2017

	Cars Arrived	Cars Received in Interchange	Cars Delivered in Interchange	Cars Placed for Unloading	Loads on Wheels at Destination As of 11/18/2017
CN	525	111	234	236	559
CP	633	234	122	383	868
SRY		11		12	41

**Port Unloads**

	11/18	11/17	Week To Date	Last Week
CN	357	330	1,709	2,368
CP	514	396	2,046	2,491
SRY	14	1	31	55

**Age Profile of Loaded Cars Waiting Placement for Unloading**

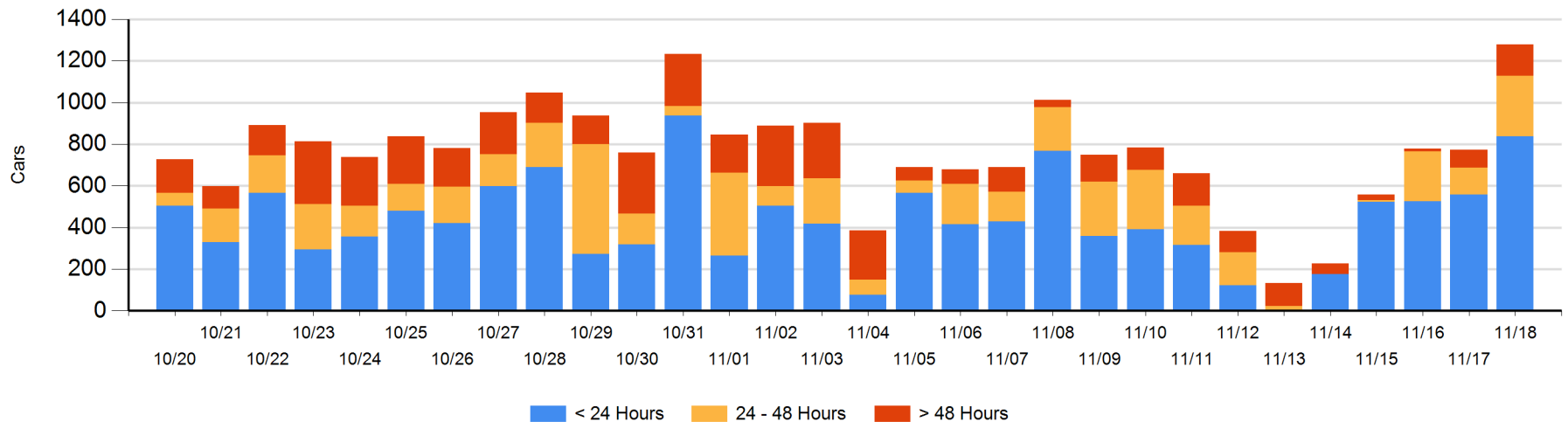
**Today**

	< 24 Hrs	24 - 48 Hrs	> 48-72 Hrs	> 72 Hrs	Total On Hand
CN	428	63	25	39	555
CP	411	227	60	27	725
SRY					0

**Change in Last 24 Hours**

	< 24 Hrs	24-48 Hrs	48 - 72 Hrs	> 72 Hrs
CN	311	-5	-22	38
CP	-30	167	31	17
SRY				

**Loaded Cars on Hand Vancouver Waiting for Placement - Last 30 Days All Railways**





**Port Terminal Status**

**Prince Rupert**

Daily Activity for 11/18/2017

	Cars Arrived	Cars Received in Interchange	Cars Delivered in Interchange	Cars Placed for Unloading	Loads on Wheels at Destination As of 11/18/2017
CN	200			206	209

**Port Unloads**

	11/18	11/17	Week To Date	Last Week
CN	115	239	1,021	1,319

**Age Profile of Loaded Cars Waiting Placement for Unloading**

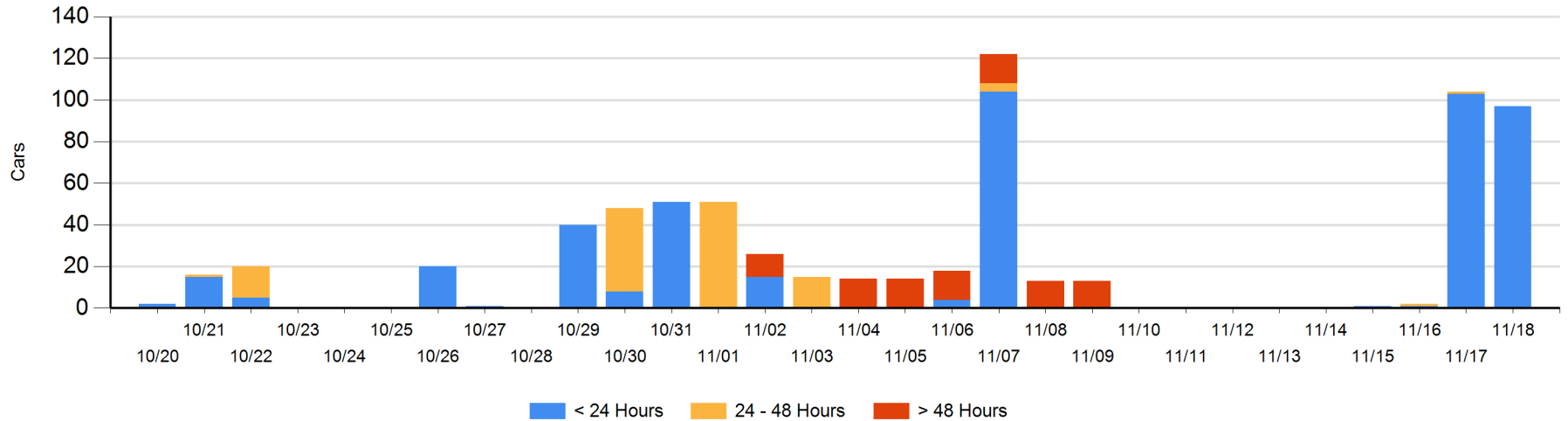
**Today**

	< 24 Hrs	24 - 48 Hrs	> 48-72 Hrs	> 72 Hrs	Total On Hand
CN	97				97

**Change in Last 24 Hours**

	< 24 Hrs	24-48 Hrs	48 - 72 Hrs	> 72 Hrs
CN	-6	-1		

Loaded Cars on Hand Prince Rupert Waiting for Placement - Last 30 Days All Railways



**Port Terminal Status**

**Thunder Bay**

Daily Activity for 11/18/2017

	Cars Arrived	Cars Received in Interchange	Cars Delivered in Interchange	Cars Placed for Unloading	Loads on Wheels at Destination As of 11/18/2017
CN					60
CP	178				214

**Port Unloads**

	11/18	11/17	Week To Date	Last Week
CN		213	671	378
CP	5	153	1,045	1,291

**Age Profile of Loaded Cars Waiting Placement for Unloading**

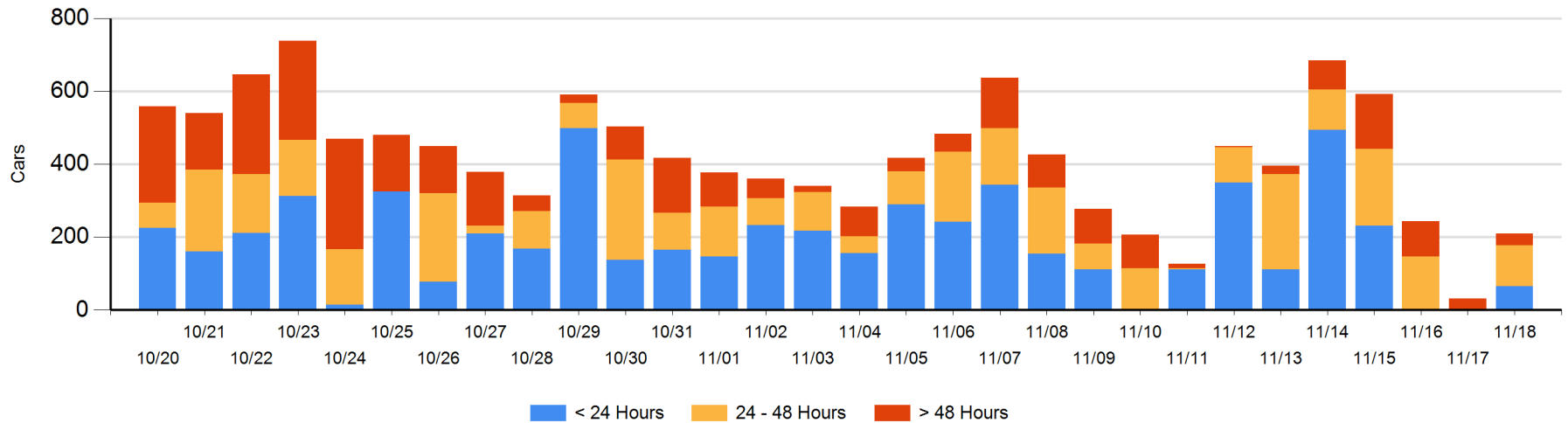
**Today**

	< 24 Hrs	24 - 48 Hrs	> 48-72 Hrs	> 72 Hrs	Total On Hand
CN			1		1
CP	66	112		31	209

**Change in Last 24 Hours**

	< 24 Hrs	24-48 Hrs	48 - 72 Hrs	> 72 Hrs
CN		-1	1	
CP	66	112	-8	8

**Loaded Cars on Hand Thunder Bay Waiting for Placement - Last 30 Days All Railways**



## Measurement Definitions

Loads on Wheels	<p>Count of loaded rail cars including all rail cars that have been released loaded at origin and have not been reported by the railway as unloaded at destination.</p> <p>Counts include all rail cars (hopper cars and boxcars) moving within a pipeline.</p>
Loads Not Moving	<p>Loaded rail cars for which the railways have not reported a movement event for 48 hours or more whether the rail car is at origin, enroute or at destination.</p>
Port Unloads	<p>Count of rail cars reported by railways as unloaded at the western port destinations of Vancouver, Prince Rupert and Thunder Bay.</p> <p>Unload counts include all rail cars (hopper cars and boxcars) unloaded by all receivers including major port terminals, transloaders and other receivers.</p>
Cars Arrived	<p>Count of rail cars reported as arrived at the destination railway terminal.</p>
Cars Received in Interchange	<p>Count of rail cars received in interchange by each railway within a destination railway terminal. Interchange activity is tracked for the Vancouver and Thunder Bay pipelines as applicable.</p>
Cars Delivered in Interchange	<p>Count of rail cars delivered in interchange by each railway within a destination railway terminal. Interchange activity is tracked for the Vancouver and Thunder Bay pipelines as applicable.</p>
Cars Placed for Unloading	<p>Count of rail cars reported by the railways as placed loaded at the receiver's facility for unloading.</p>
Loads on Wheels at Destination	<p>Count of rail cars that remain under load within the destination railway terminal including rail cars that have been reported as placed for unloading but not yet reported as unloaded.</p>
Waiting Placement for Unloading	<p>Count of rail cars that have been reported as arrived at the destination railway terminal but not reported as placed for unloading by the railway.</p> <p>For the Ports of Vancouver, Prince Rupert and Thunder Bay the count of rail cars waiting placement for unloading is categorized by age – i.e. the elapsed time from arrival at destination to the current report date.</p>