

Loads on Wheels

- System wide loads on wheels declined marginally in the prior 24 hours - loads now at 10,781 - 2% higher than the trailing 30 day average
- In total loads on wheels decreased by 70 cars reflecting an increase in volumes for CN (+252) with a corresponding decline in CP volumes (-238) - counts also decreased for traffic moving on US carriers.
- CN volumes increased in three of five corridors led by the Prince Rupert (+172) and Thunder Bay (+117) corridors. System wide CN loads on wheels are now at 5,492 - in line with the trailing 30 day average.
- CP volume decline attributable primarily to Vancouver (-267). System wide loads at 4,968 - the lowest level in the prior 10 days and 3% above the trailing 30 day average.
- Vancouver now below 7,000 for the first time in six days (6,862) - Prince Rupert at 1,282 and Thunder Bay at 1,404.

Loads Not Moving

- The count of loaded cars not moving on CN and CP for 48 hours or more declined marginally in the prior 24 hours; total cars on CN and CP not moving for 48 hours or more remain near 3,000
- CN
 - The count of cars not moving increased by 21 cars on a net basis - loads on wheels now idle for 48 hours or more at 1,345
 - The increase is primarily attributable to higher counts in the Thunder Bay corridor (+256) offset by declines in the Prince Rupert (-98) and Vancouver (-103) corridors.
 - 80% of cars (1,080) are dwelling at origin locations with 80% of them destined to Vancouver
- CP
 - CP counts decreased by 107 cars cars in total - attributable primarily to the Vancouver corridor (-112) - idle cars now at 1,537
 - 82% of cars are dwelling at origin - 1,278 cars - 80% of them destined to Vancouver.

Port Performance

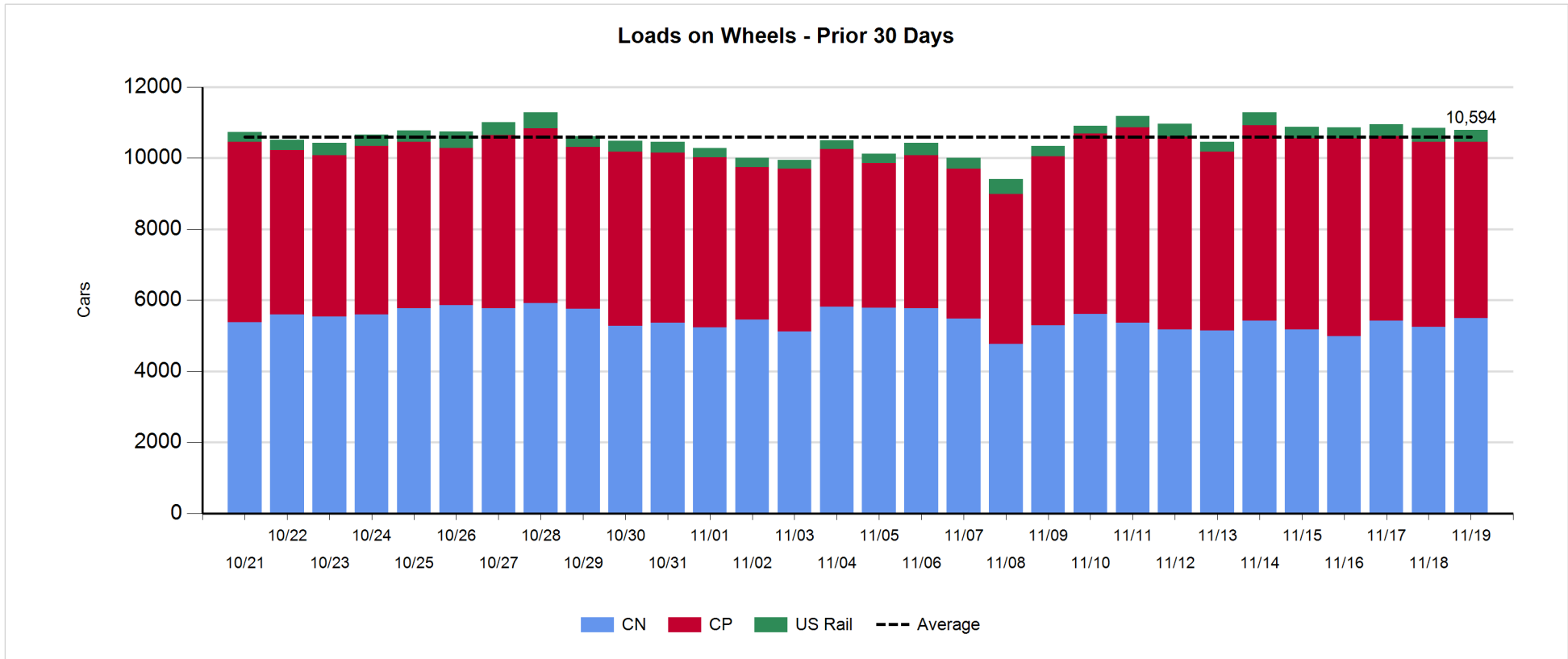
- CN and CP unloaded a total of 724 cars at the three western ports - 15% lower than average Sunday performance during the prior 30 days. Week 16 unloads totaled 7,248 - 654 fewer than the prior week reflecting lower unloads at Prince Rupert and Vancouver offset by higher unloads at Thunder Bay.
- Vancouver
 - Total of 703 cars reported unloaded by CN and CP at the Port of Vancouver; CN - 270 and CP - 433
 - There are currently 1,322 cars on hand at Vancouver waiting placement for unloading with more than 900 cars arriving at the port in the prior 24 hours
- Thunder Bay
 - No cars reported unloaded by either CN or CP in the prior 24 hours
 - Cars at Thunder Bay waiting placement now at 146 - all CP

Daily Loads on Wheels - 11/19/2017

	E Canada	Prince Rupert	Thunder Bay	USA/MEX	Vancouver	Total
CN	334	1,282	533	427	2,916	5,492
CP	45		871	168	3,884	4,968
Short Line	6				62	68
US Rail				253		253
	385	1,282	1,404	848	6,862	10,781

Change in Loads on Wheels - Prior 24 Hours

	E Canada	Prince Rupert	Thunder Bay	USA/MEX	Vancouver	Total
CN	-16	172	117	27	-48	252
CP	-35		82	-18	-267	-238
Short Line	0				21	21
US Rail				-105		-105
	-51	172	199	-96	-294	-70

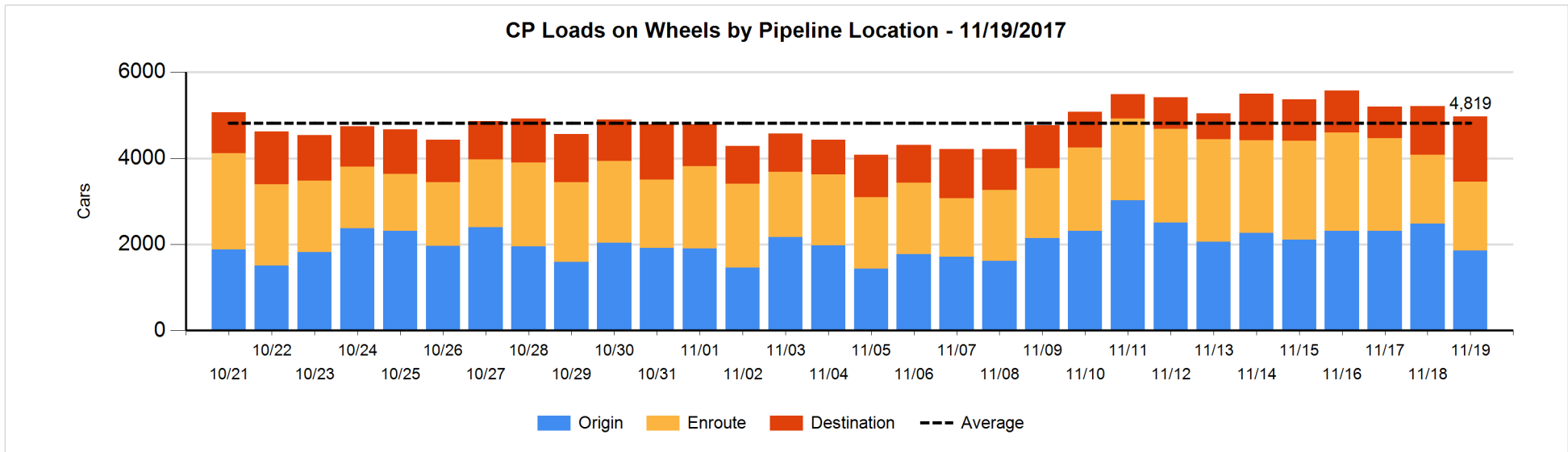
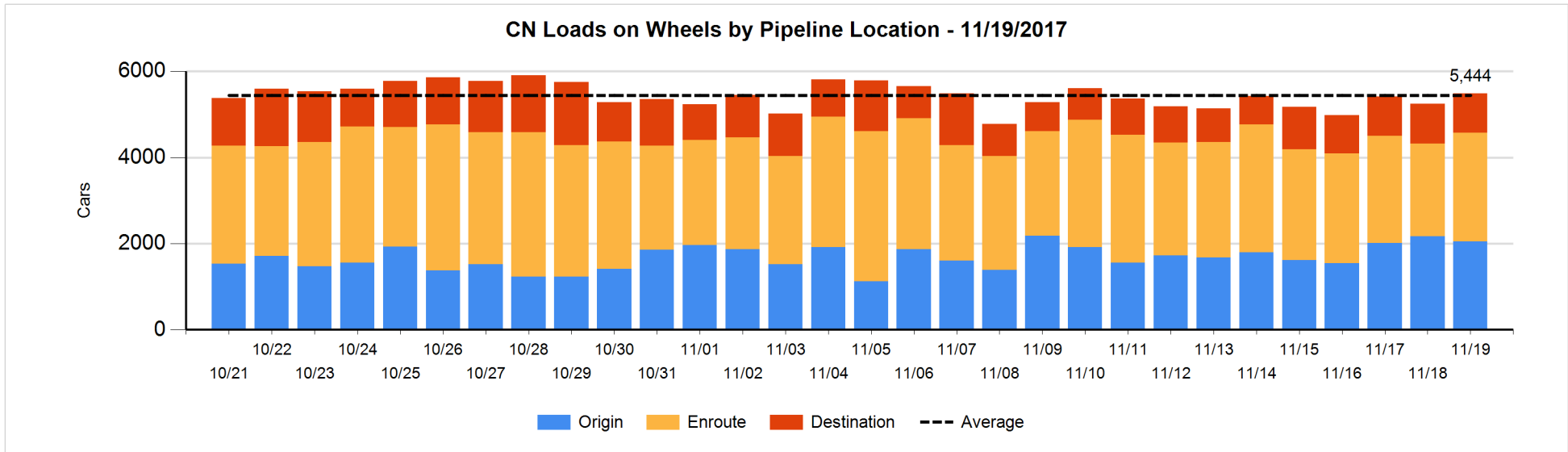


Daily Loads on Wheels By Pipeline Location - 11/19/2017

	E Canada	Prince Rupert	Thunder Bay	USA/MEX	Vancouver	Total
CN						
Origin		190	320	51	1,491	2,052
Enroute	274	785	153	351	952	2,515
Destination	60	307	60	25	473	925
	334	1,282	533	427	2,916	5,492
CP						
Origin	6		397	124	1,333	1,860
Enroute	35		149	30	1,376	1,590
Destination	4		325	14	1,174	1,517
	45		871	168	3,883	4,967
US Rail / Short Line						
Origin						
Enroute	1			160		161
Destination	5			93	62	160
	6			253	62	321

Change in Daily Loads on Wheels By Pipeline Location - Prior 24 Hours

	E Canada	Prince Rupert	Thunder Bay	USA/MEX	Vancouver	Total
CN						
Origin		-41	117	-86	-107	-117
Enroute	-1	115	0	101	145	360
Destination	-15	98	0	12	-86	9
	-16	172	117	27	-48	252
CP						
Origin	0		-67	-2	-550	-619
Enroute	-19		38	-2	-23	-6
Destination	-16		111	-14	306	387
	-35		82	-18	-267	-238
US Rail / Short Line						
Origin						
Enroute	0			-113		-113
Destination	0			8	21	29
	0			-105	21	-84

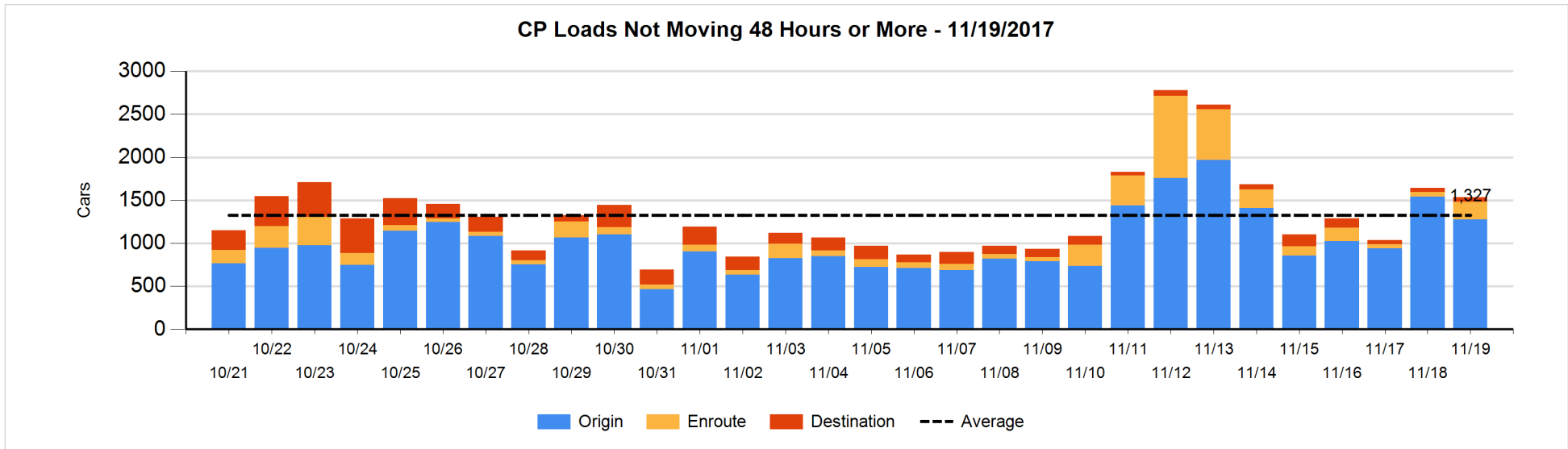
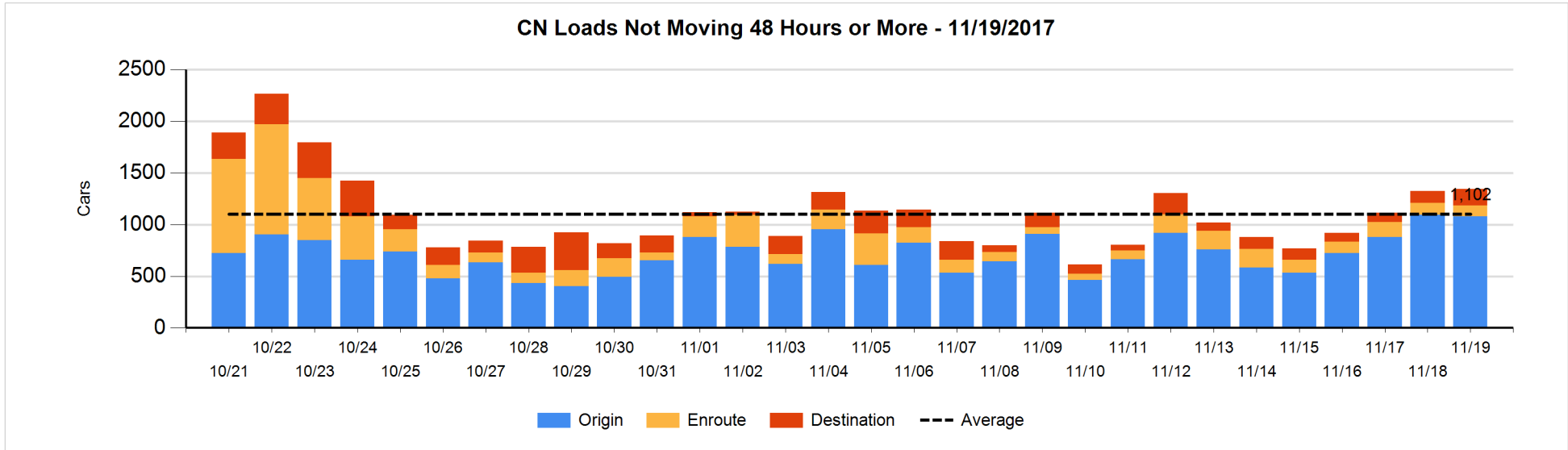


Loads Not Moving 48 Hours or More - 11/19/2017

	E Canada	Prince Rupert	Thunder Bay	USA/MEX	Vancouver	Total
CN						
Origin			200	2	878	1080
Enroute	14	21		5	64	104
Destination	40	2	59	13	47	161
	54	23	259	20	989	1345
CP						
Origin			246	27	1005	1278
Enroute	10			9	185	204
Destination	4		2	14	35	55
	14		248	50	1225	1537
US Rail / Short Line						
Origin						
Enroute	1			57		58
Destination	5			48	11	64
	6			105	11	122

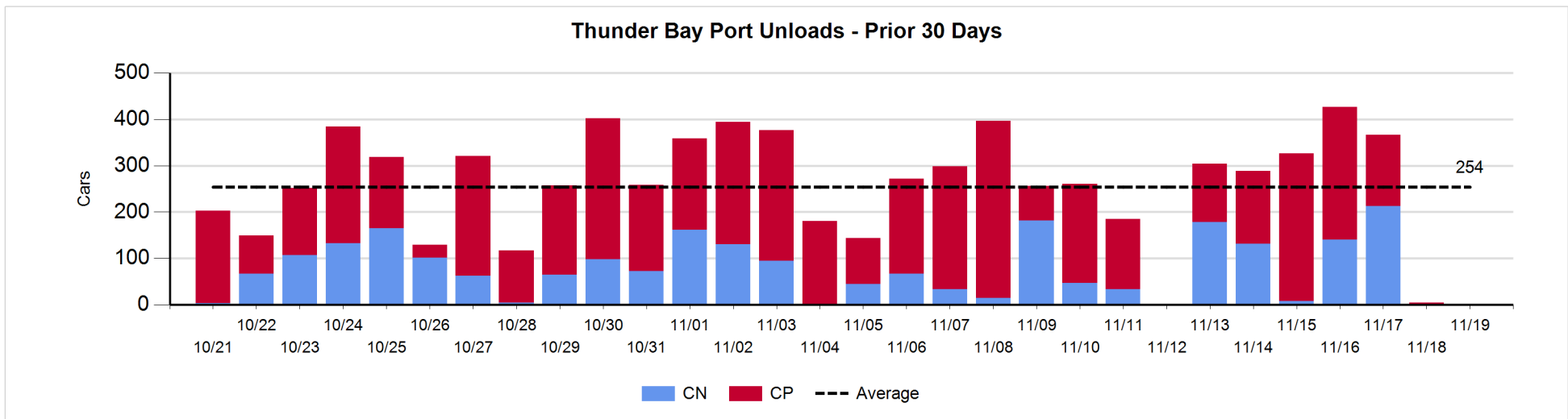
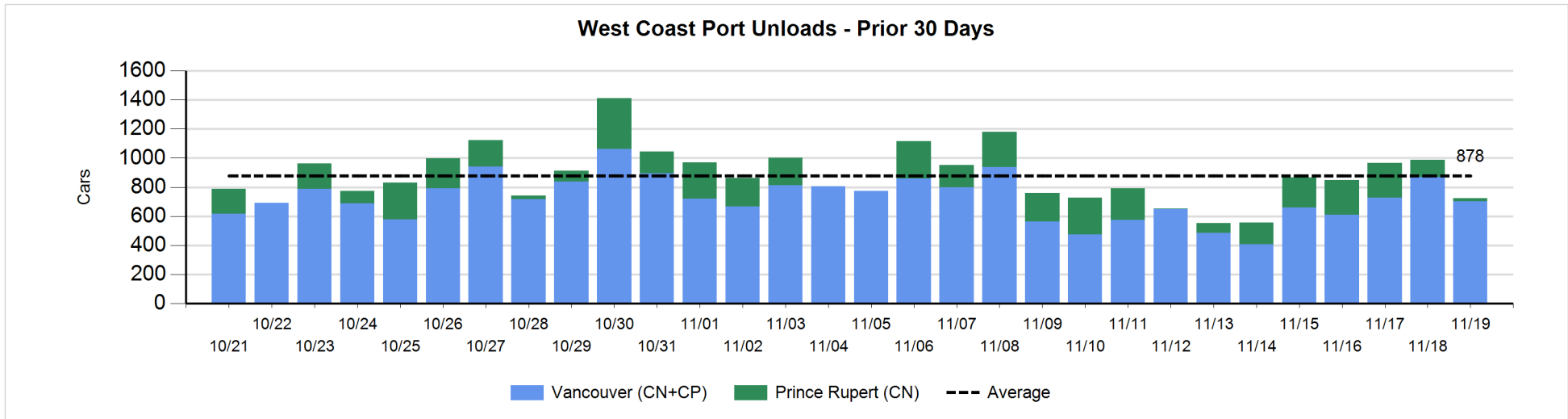
Change in Loads Not Moving 48 Hours or More - 11/19/2017

	E Canada	Prince Rupert	Thunder Bay	USA/MEX	Vancouver	Total
CN						
Origin		-94	200	0	-120	-14
Enroute	0	-4		-6	0	-10
Destination	-28	0	56	0	17	45
	-28	-98	256	-6	-103	21
CP						
Origin			28	-2	-291	-265
Enroute	1			3	149	153
Destination	-5		-34	14	30	5
	-4		-6	15	-112	-107
US Rail / Short Line						
Origin						
Enroute	1			27		28
Destination	0			12	8	20
	1			39	8	48



Port Unloads - 11/19/2017

	Prince Rupert	Vancouver	West Coast Total	Thunder Bay	Total
CN	21	270	291		291
CP		433	433		433
	21	703	724		724



Port Terminal Status

Vancouver

Daily Activity for 11/19/2017

	Cars Arrived	Cars Received in Interchange	Cars Delivered in Interchange	Cars Placed for Unloading	Loads on Wheels at Destination As of 11/19/2017
CN	244	161	240	315	473
CP	685	225	165	570	1,174
SRY		19		5	62

Port Unloads

	11/19	11/18	Week To Date	Last Week
CN	270	357	1,979	2,368
CP	433	514	2,479	2,491
SRY	1	14	32	55

Age Profile of Loaded Cars Waiting Placement for Unloading

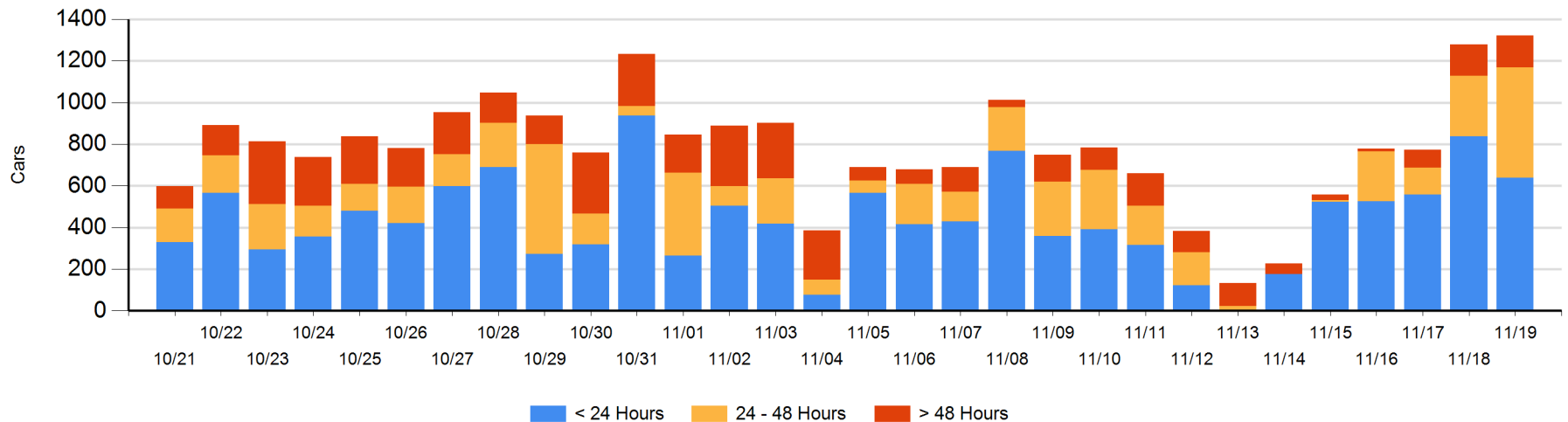
Today

	< 24 Hrs	24 - 48 Hrs	> 48-72 Hrs	> 72 Hrs	Total On Hand
CN	162	332	6	33	533
CP	478	196	72	43	789
SRY					0

Change in Last 24 Hours

	< 24 Hrs	24-48 Hrs	48 - 72 Hrs	> 72 Hrs
CN	-266	269	-19	-6
CP	67	-31	12	16
SRY				

Loaded Cars on Hand Vancouver Waiting for Placement - Last 30 Days All Railways



Port Terminal Status

Prince Rupert

Daily Activity for 11/19/2017

	Cars Arrived	Cars Received in Interchange	Cars Delivered in Interchange	Cars Placed for Unloading	Loads on Wheels at Destination As of 11/19/2017
CN	117			213	307

Port Unloads

	11/19	11/18	Week To Date	Last Week
CN	21	115	1,042	1,319

Age Profile of Loaded Cars Waiting Placement for Unloading

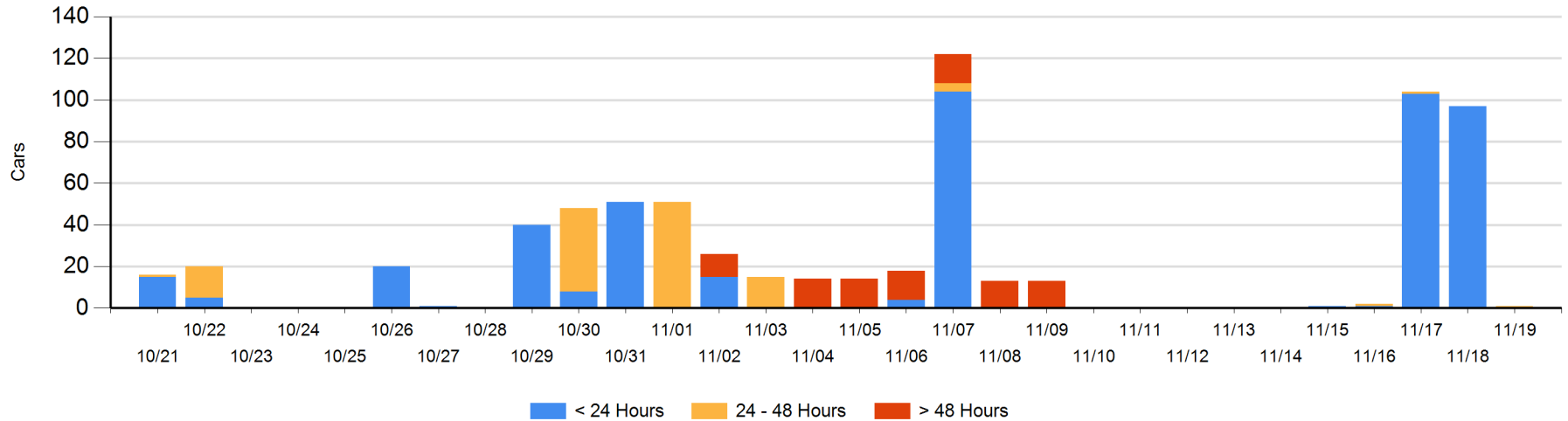
Today

	< 24 Hrs	24 - 48 Hrs	> 48-72 Hrs	> 72 Hrs	Total On Hand
CN		1			1

Change in Last 24 Hours

	< 24 Hrs	24-48 Hrs	48 - 72 Hrs	> 72 Hrs
CN	-97	1		

Loaded Cars on Hand Prince Rupert Waiting for Placement - Last 30 Days All Railways



Port Terminal Status

Thunder Bay

Daily Activity for 11/19/2017

	Cars Arrived	Cars Received in Interchange	Cars Delivered in Interchange	Cars Placed for Unloading	Loads on Wheels at Destination As of 11/19/2017
CN				1	60
CP	111			177	325

Port Unloads

	11/19	11/18	Week To Date	Last Week
CN			671	378
CP		5	1,045	1,291

Age Profile of Loaded Cars Waiting Placement for Unloading

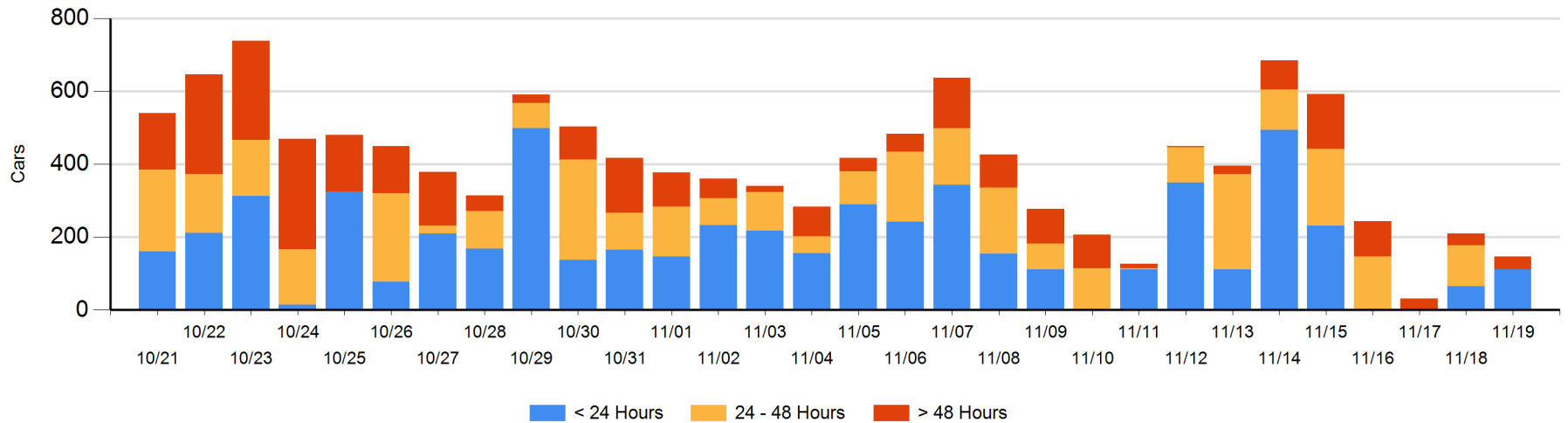
Today

	< 24 Hrs	24 - 48 Hrs	> 48-72 Hrs	> 72 Hrs	Total On Hand
CN					0
CP	111		35		146

Change in Last 24 Hours

	< 24 Hrs	24-48 Hrs	48 - 72 Hrs	> 72 Hrs
CN			-1	
CP	45	-112	35	-31

Loaded Cars on Hand Thunder Bay Waiting for Placement - Last 30 Days All Railways



Measurement Definitions

Loads on Wheels	<p>Count of loaded rail cars including all rail cars that have been released loaded at origin and have not been reported by the railway as unloaded at destination.</p> <p>Counts include all rail cars (hopper cars and boxcars) moving within a pipeline.</p>
Loads Not Moving	<p>Loaded rail cars for which the railways have not reported a movement event for 48 hours or more whether the rail car is at origin, enroute or at destination.</p>
Port Unloads	<p>Count of rail cars reported by railways as unloaded at the western port destinations of Vancouver, Prince Rupert and Thunder Bay.</p> <p>Unload counts include all rail cars (hopper cars and boxcars) unloaded by all receivers including major port terminals, transloaders and other receivers.</p>
Cars Arrived	<p>Count of rail cars reported as arrived at the destination railway terminal.</p>
Cars Received in Interchange	<p>Count of rail cars received in interchange by each railway within a destination railway terminal. Interchange activity is tracked for the Vancouver and Thunder Bay pipelines as applicable.</p>
Cars Delivered in Interchange	<p>Count of rail cars delivered in interchange by each railway within a destination railway terminal. Interchange activity is tracked for the Vancouver and Thunder Bay pipelines as applicable.</p>
Cars Placed for Unloading	<p>Count of rail cars reported by the railways as placed loaded at the receiver's facility for unloading.</p>
Loads on Wheels at Destination	<p>Count of rail cars that remain under load within the destination railway terminal including rail cars that have been reported as placed for unloading but not yet reported as unloaded.</p>
Waiting Placement for Unloading	<p>Count of rail cars that have been reported as arrived at the destination railway terminal but not reported as placed for unloading by the railway.</p> <p>For the Ports of Vancouver, Prince Rupert and Thunder Bay the count of rail cars waiting placement for unloading is categorized by age – i.e. the elapsed time from arrival at destination to the current report date.</p>