

Loads on Wheels

- System wide loads on wheels increased marginally in the prior 24 hours - loads now at 10,853 - 3% higher than the trailing 30 day average
- In total loads on wheels increased by 72 cars reflecting an increase in volumes for CN (+268) with a decline in CP volumes (-171).
- CN volumes increased in three of five corridors led by the Vancouver (+244) and E Canada (+115) corridors offset by a decline in the Prince Rupert corridor (-152). System wide CN loads on wheels are now at 5,760 - the highest level in the prior 15 days and 5% above the trailing 30 day average.
- CP volume decline attributable primarily to Vancouver (-218). System wide loads at 4,797 - the lowest level in the prior 10 days and in line with the trailing 30 day average.
- Vancouver now at 6,885, Prince Rupert at 1,130 and Thunder Bay at 1,523.

Loads Not Moving

- The count of loaded cars not moving on CN and CP for 48 hours or more increased by 130 cars in the prior 24 hours; total cars on CN and CP not moving for 48 hours or more now at 3,012
- CN
 - The count of cars not moving increased by 74 cars on a net basis - loads on wheels now idle for 48 hours or more at 1,419
 - The increase is primarily attributable to higher counts in the Vancouver corridor (+195) offset by declines in the Thunder Bay (-152) corridor.
 - 87% of cars (1,235) are dwelling at origin locations with 87% of them destined to Vancouver
- CP
 - CP counts increased by 56 cars cars in total reflecting nominal changes across all corridors - idle cars now at 1,593
 - 75% of cars are dwelling at origin - 1,206 cars - 70% of them destined to Vancouver.

Port Performance

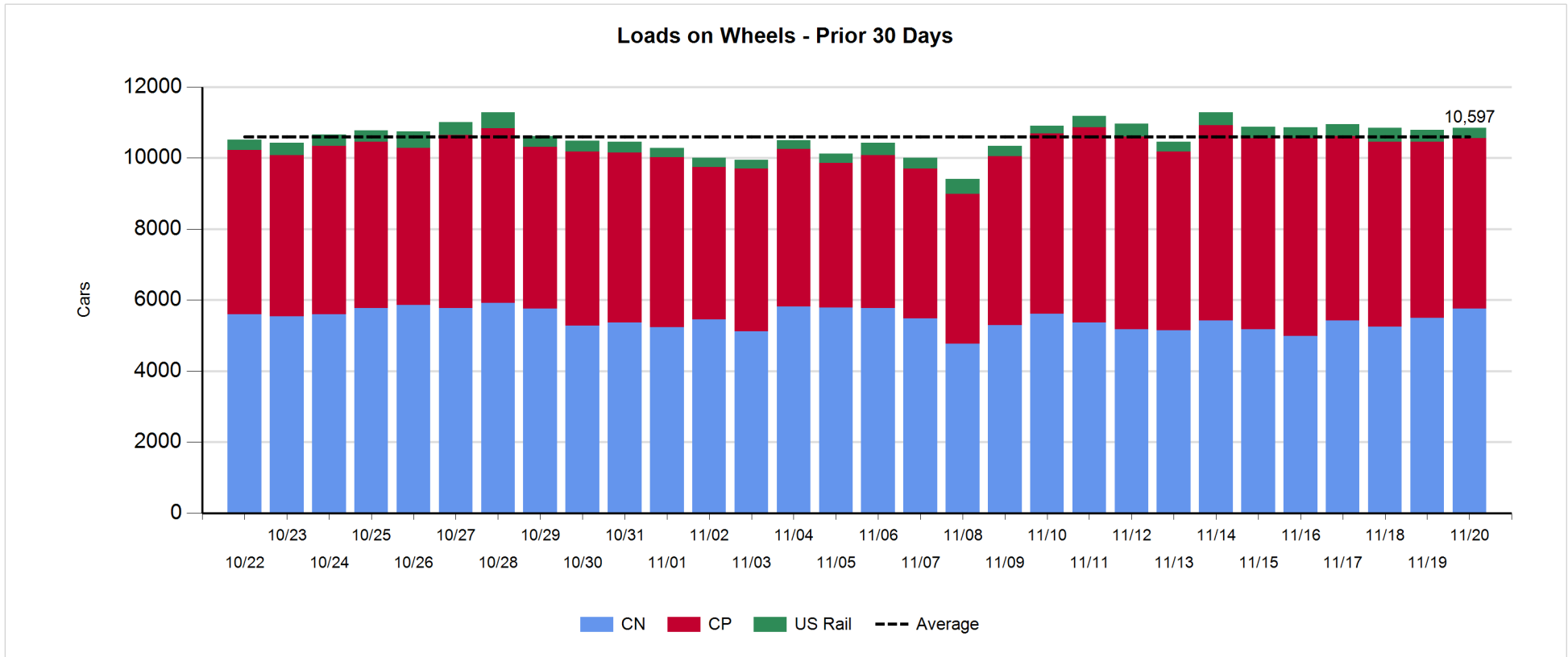
- CN and CP unloaded a total of 1,272 cars at the three western ports - in line with average Monday performance during the prior 30 days.
- Vancouver
 - Total of 790 cars reported unloaded by CN and CP at the Port of Vancouver; CN - 321 and CP - 469
 - There are currently 1,173 cars on hand at Vancouver waiting placement for unloading
- Thunder Bay
 - Total of 231 cars reported unloaded by CN and CP in the prior 24 hours
 - Cars at Thunder Bay waiting placement now at 109

Daily Loads on Wheels - 11/20/2017

	E Canada	Prince Rupert	Thunder Bay	USA/MEX	Vancouver	Total
CN	449	1,130	601	420	3,160	5,760
CP	43		922	166	3,666	4,797
Short Line	6				59	65
US Rail				231		231
	498	1,130	1,523	817	6,885	10,853

Change in Loads on Wheels - Prior 24 Hours

	E Canada	Prince Rupert	Thunder Bay	USA/MEX	Vancouver	Total
CN	115	-152	68	-7	244	268
CP	-2		51	-2	-218	-171
Short Line	0				-3	-3
US Rail				-22		-22
	113	-152	119	-31	23	72

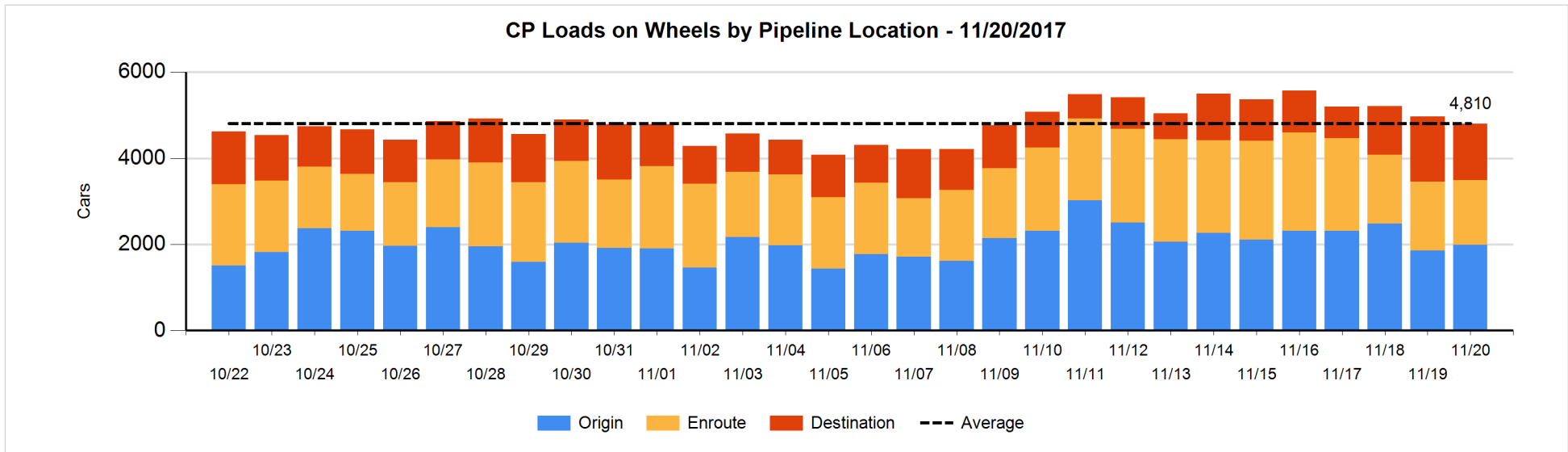
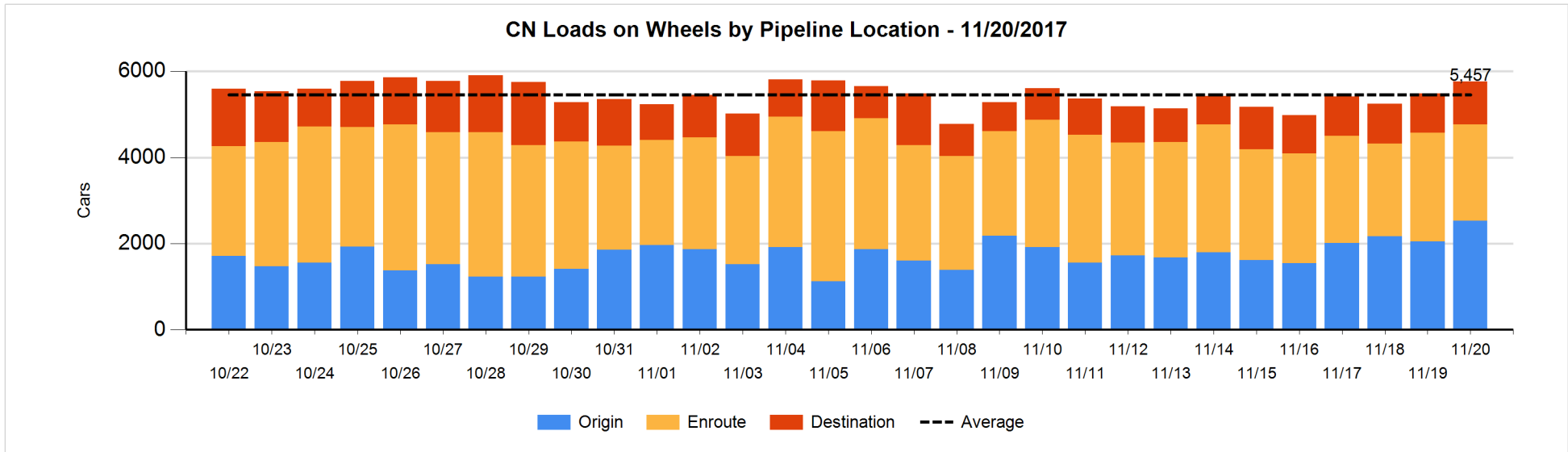


Daily Loads on Wheels By Pipeline Location - 11/20/2017

	E Canada	Prince Rupert	Thunder Bay	USA/MEX	Vancouver	Total
CN						
Origin	122	275	207	65	1,864	2,533
Enroute	275	530	342	314	776	2,237
Destination	52	325	52	41	520	990
	449	1,130	601	420	3,160	5,760
CP						
Origin	7		509	127	1,340	1,983
Enroute	36		225	29	1,221	1,511
Destination			188	10	1,104	1,302
	43		922	166	3,665	4,796
US Rail / Short Line						
Origin						
Enroute	1			138		139
Destination	5			93	59	157
	6			231	59	296

Change in Daily Loads on Wheels By Pipeline Location - Prior 24 Hours

	E Canada	Prince Rupert	Thunder Bay	USA/MEX	Vancouver	Total
CN						
Origin	122	85	-113	14	373	481
Enroute	1	-255	189	-37	-176	-278
Destination	-8	18	-8	16	47	65
	115	-152	68	-7	244	268
CP						
Origin	1		112	3	7	123
Enroute	1		76	-1	-155	-79
Destination	-4		-137	-4	-70	-215
	-2		51	-2	-218	-171
US Rail / Short Line						
Origin						
Enroute	0			-22		-22
Destination	0			0	-3	-3
	0			-22	-3	-25

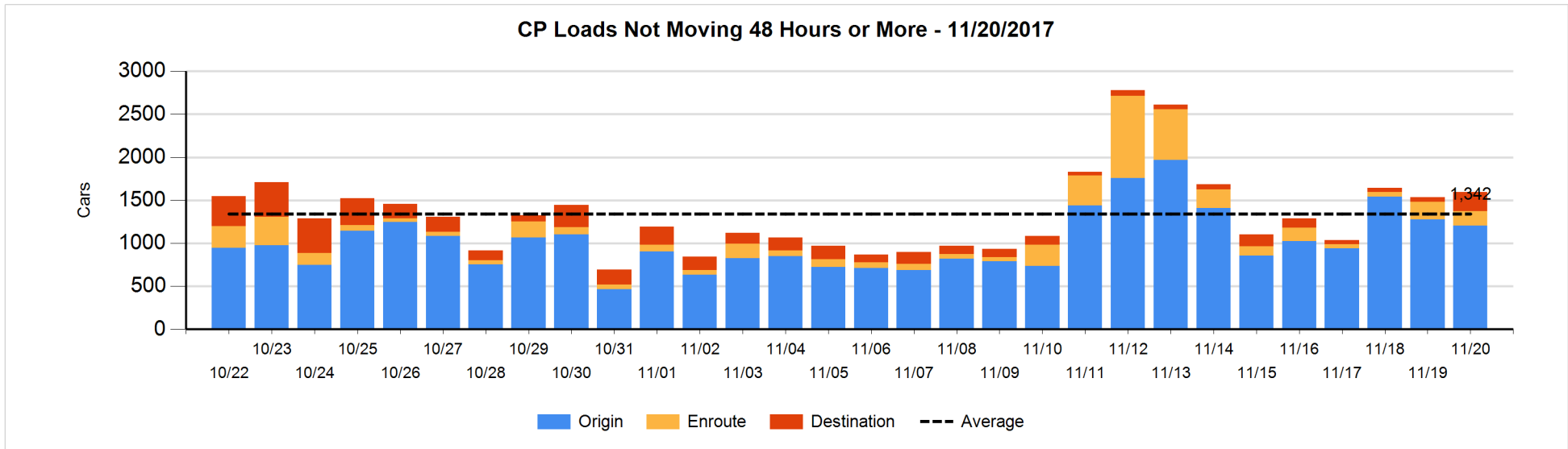
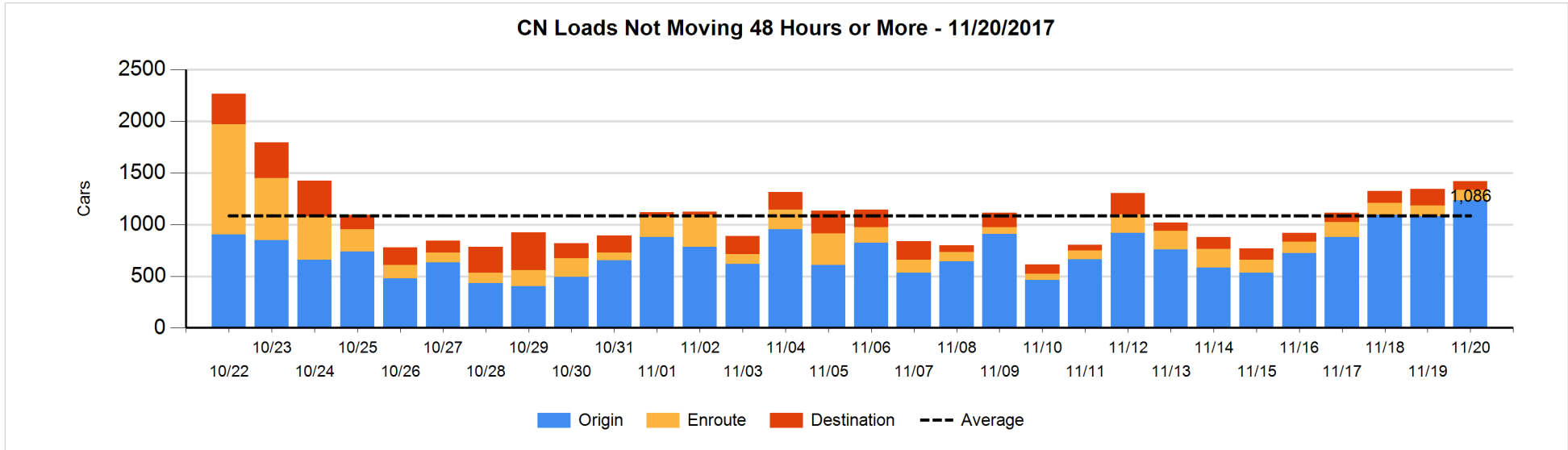


Loads Not Moving 48 Hours or More - 11/20/2017

	E Canada	Prince Rupert	Thunder Bay	USA/MEX	Vancouver	Total
CN						
Origin			103	51	1081	1235
Enroute	14	17		4	62	97
Destination	36	3	4	3	41	87
	50	20	107	58	1184	1419
CP						
Origin			205	124	877	1206
Enroute	8			7	152	167
Destination			2	10	208	220
	8		207	141	1237	1593
US Rail / Short Line						
Origin						
Enroute	1			52		53
Destination				25	17	42
	1			77	17	95

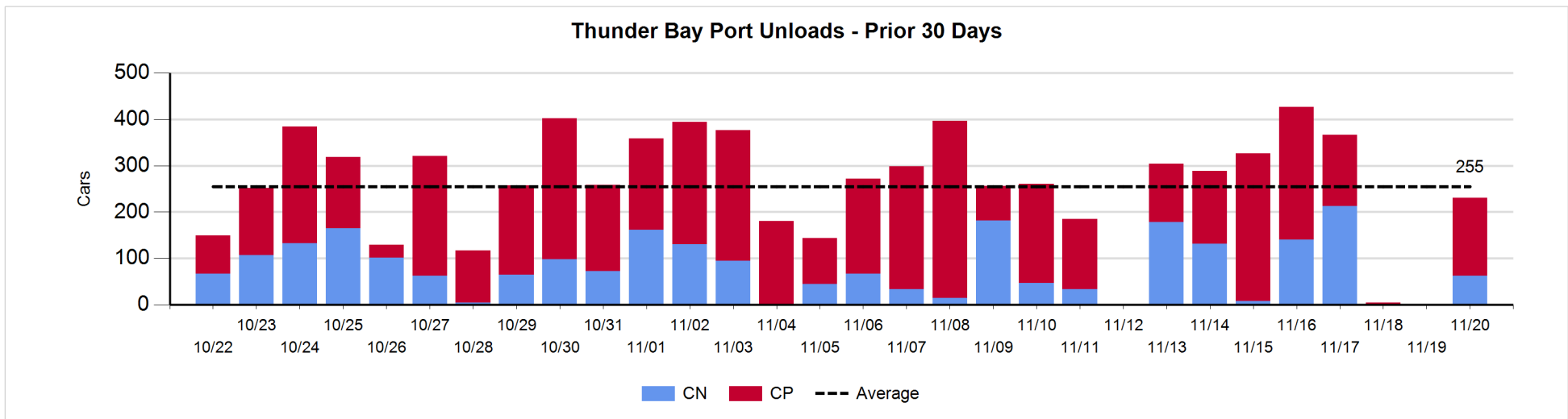
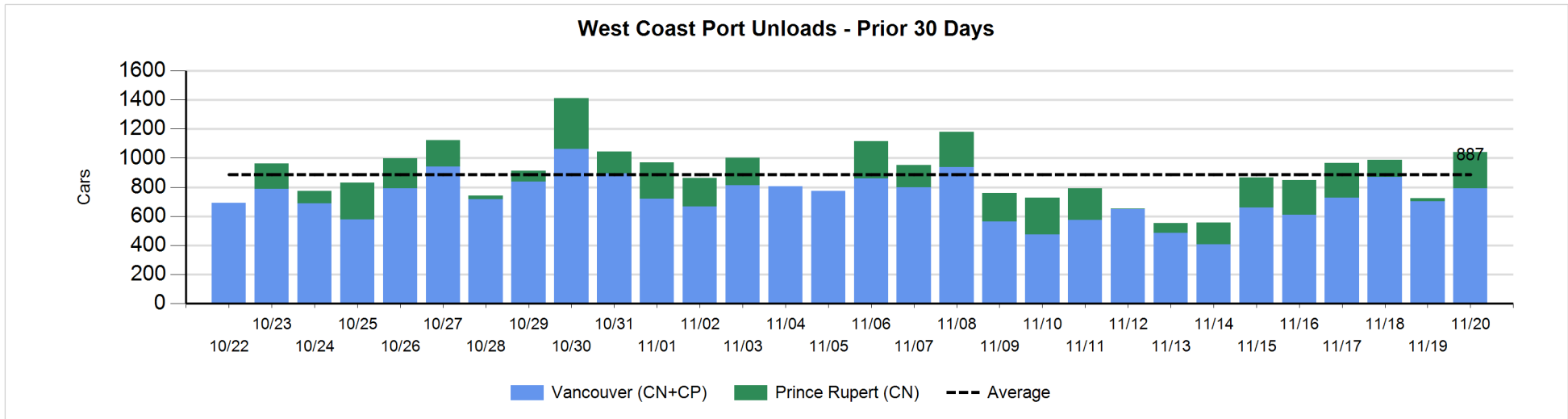
Change in Loads Not Moving 48 Hours or More - 11/20/2017

	E Canada	Prince Rupert	Thunder Bay	USA/MEX	Vancouver	Total
CN						
Origin			-97	49	203	155
Enroute	0	-4		-1	-2	-7
Destination	-4	1	-55	-10	-6	-74
	-4	-3	-152	38	195	74
CP						
Origin			-41	97	-128	-72
Enroute	-2			-2	-33	-37
Destination	-4		0	-4	173	165
	-6		-41	91	12	56
US Rail / Short Line						
Origin						
Enroute	0			-5		-5
Destination	-5			-23	6	-22
	-5			-28	6	-27



Port Unloads - 11/20/2017

	Prince Rupert	Vancouver	West Coast Total	Thunder Bay	Total
CN	251	321	572	62	634
CP		469	469	169	638
	251	790	1,041	231	1,272



Port Terminal Status

Vancouver

Daily Activity for 11/20/2017

	Cars Arrived	Cars Received in Interchange	Cars Delivered in Interchange	Cars Placed for Unloading	Loads on Wheels at Destination As of 11/20/2017
CN	284	197	172	453	520
CP	495	168	201	467	1,104
SRY	1	8		7	59

Port Unloads

	11/20	11/19	Week To Date	Last Week
CN	321	270	321	1,979
CP	469	433	469	2,479
SRY	12	1	12	32

Age Profile of Loaded Cars Waiting Placement for Unloading

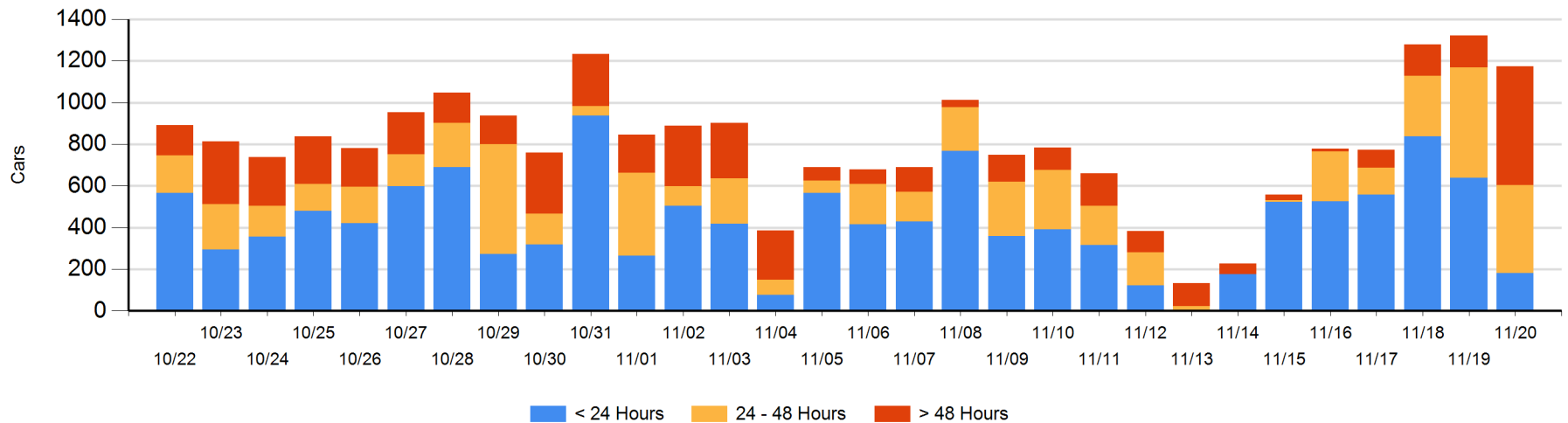
Today

	< 24 Hrs	24 - 48 Hrs	> 48-72 Hrs	> 72 Hrs	Total On Hand
CN	80	87	332	39	538
CP	101	335	108	91	635
SRY					0

Change in Last 24 Hours

	< 24 Hrs	24-48 Hrs	48 - 72 Hrs	> 72 Hrs
CN	-82	-245	326	6
CP	-377	139	36	48
SRY				

Loaded Cars on Hand Vancouver Waiting for Placement - Last 30 Days All Railways



Port Terminal Status

Prince Rupert

Daily Activity for 11/20/2017

	Cars Arrived	Cars Received in Interchange	Cars Delivered in Interchange	Cars Placed for Unloading	Loads on Wheels at Destination As of 11/20/2017
CN	269			269	325

Port Unloads

	11/20	11/19	Week To Date	Last Week
CN	251	21	251	1,042

Age Profile of Loaded Cars Waiting Placement for Unloading

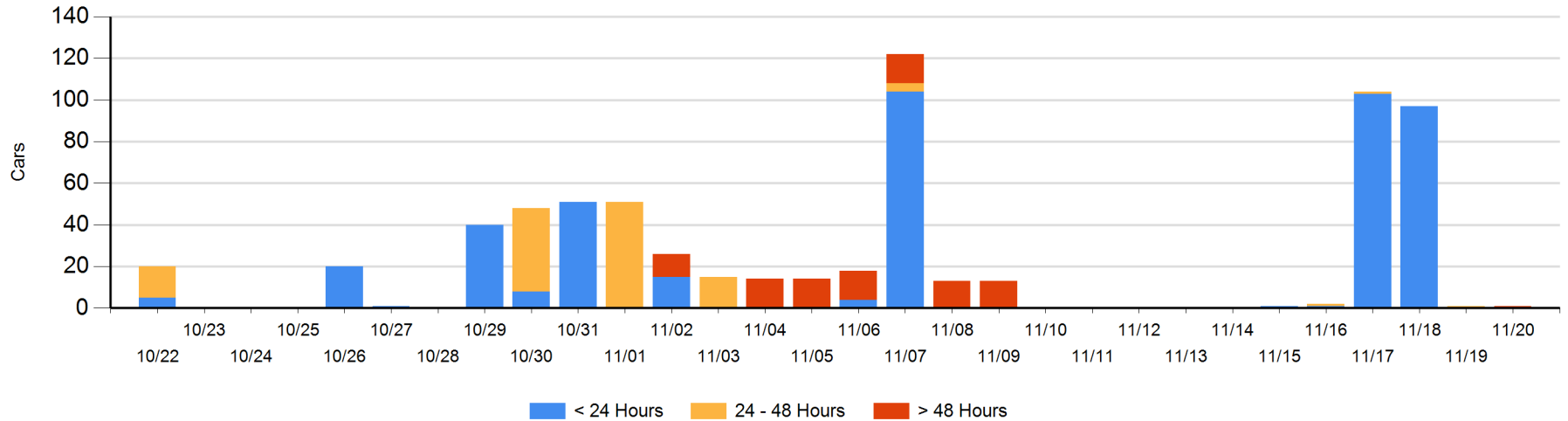
Today

	< 24 Hrs	24 - 48 Hrs	> 48-72 Hrs	> 72 Hrs	Total On Hand
CN			1		1

Change in Last 24 Hours

	< 24 Hrs	24-48 Hrs	48 - 72 Hrs	> 72 Hrs
CN		-1	1	

Loaded Cars on Hand Prince Rupert Waiting for Placement - Last 30 Days All Railways



Port Terminal Status

Thunder Bay

Daily Activity for 11/20/2017

	Cars Arrived	Cars Received in Interchange	Cars Delivered in Interchange	Cars Placed for Unloading	Loads on Wheels at Destination As of 11/20/2017
CN	54			42	52
CP	34			83	188

Port Unloads

	11/20	11/19	Week To Date	Last Week
CN	62		62	671
CP	169		169	1,045

Age Profile of Loaded Cars Waiting Placement for Unloading

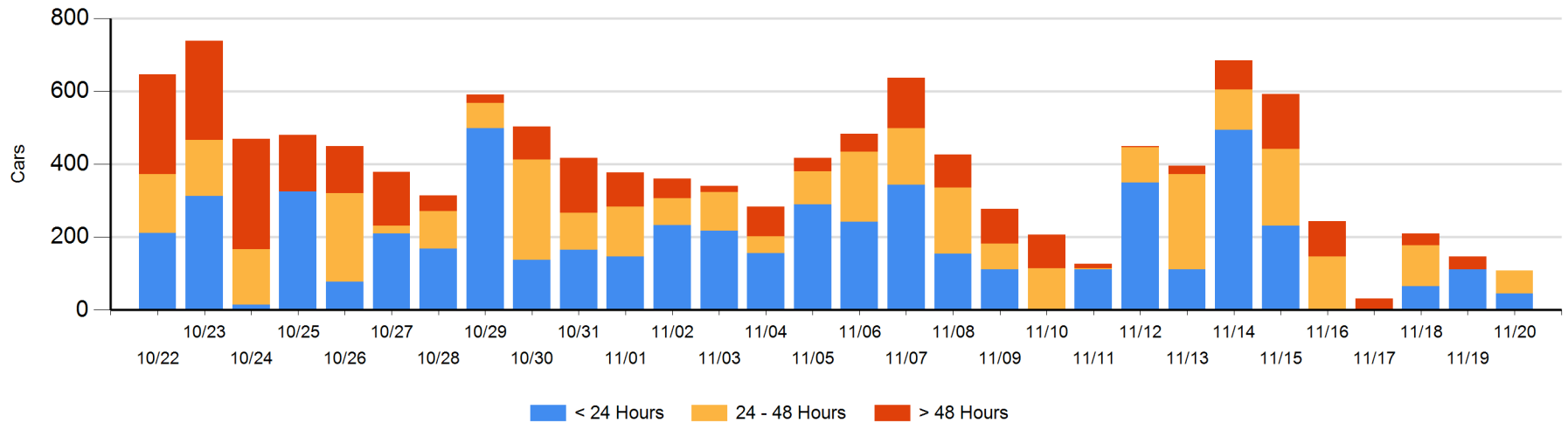
Today

	< 24 Hrs	24 - 48 Hrs	> 48-72 Hrs	> 72 Hrs	Total On Hand
CN	12				12
CP	34	63			97

Change in Last 24 Hours

	< 24 Hrs	24-48 Hrs	48 - 72 Hrs	> 72 Hrs
CN	12			
CP	-77	63	-35	

Loaded Cars on Hand Thunder Bay Waiting for Placement - Last 30 Days All Railways



Measurement Definitions

Loads on Wheels	<p>Count of loaded rail cars including all rail cars that have been released loaded at origin and have not been reported by the railway as unloaded at destination.</p> <p>Counts include all rail cars (hopper cars and boxcars) moving within a pipeline.</p>
Loads Not Moving	<p>Loaded rail cars for which the railways have not reported a movement event for 48 hours or more whether the rail car is at origin, enroute or at destination.</p>
Port Unloads	<p>Count of rail cars reported by railways as unloaded at the western port destinations of Vancouver, Prince Rupert and Thunder Bay.</p> <p>Unload counts include all rail cars (hopper cars and boxcars) unloaded by all receivers including major port terminals, transloaders and other receivers.</p>
Cars Arrived	<p>Count of rail cars reported as arrived at the destination railway terminal.</p>
Cars Received in Interchange	<p>Count of rail cars received in interchange by each railway within a destination railway terminal. Interchange activity is tracked for the Vancouver and Thunder Bay pipelines as applicable.</p>
Cars Delivered in Interchange	<p>Count of rail cars delivered in interchange by each railway within a destination railway terminal. Interchange activity is tracked for the Vancouver and Thunder Bay pipelines as applicable.</p>
Cars Placed for Unloading	<p>Count of rail cars reported by the railways as placed loaded at the receiver's facility for unloading.</p>
Loads on Wheels at Destination	<p>Count of rail cars that remain under load within the destination railway terminal including rail cars that have been reported as placed for unloading but not yet reported as unloaded.</p>
Waiting Placement for Unloading	<p>Count of rail cars that have been reported as arrived at the destination railway terminal but not reported as placed for unloading by the railway.</p> <p>For the Ports of Vancouver, Prince Rupert and Thunder Bay the count of rail cars waiting placement for unloading is categorized by age – i.e. the elapsed time from arrival at destination to the current report date.</p>