

## Loads on Wheels

- System wide loads on wheels declined marginally in the prior 24 hours - loads now at 10,765 - 2% higher than the trailing 30 day average
- In total loads on wheels decreased by 88 cars reflecting a slight increase in volumes for CN (+52) with a decline in CP volumes (-183).
- CN volumes declined in all corridors other than Vancouver (+458). System wide CN loads on wheels are now at 5,812 - the highest level in the prior 3 weeks and 7% above the trailing 30 day average.
- CP volume decline attributable primarily to Vancouver (-183). System wide loads at 4,614 - the lowest level in the prior 12 days and 4% below the trailing 30 day average.
- Vancouver now at 7,112, Prince Rupert at 919 - the first time below 1,000 in the prior 30 days and Thunder Bay at 1,433.

## Loads Not Moving

- The count of loaded cars not moving on CN and CP for 48 hours or more declined by 184 cars in the prior 24 hours; total cars on CN and CP not moving for 48 hours or more now at 2,828
- CN
  - The count of cars not moving declined by 136 cars on a net basis - loads on wheels now idle for 48 hours or more at 1,283
  - The decrease is primarily attributable to reduced counts in the Vancouver (-84) and Thunder Bay (-103) corridors.
  - 80% of cars (1,027) are dwelling at origin locations with 90% of them destined to Vancouver
- CP
  - CP counts decreased by 48 cars in total reflecting nominal changes across all corridors - idle cars now at 1,545
  - 66% of cars are dwelling at origin - 1,026 cars - 70% of them destined to Vancouver.

## Port Performance

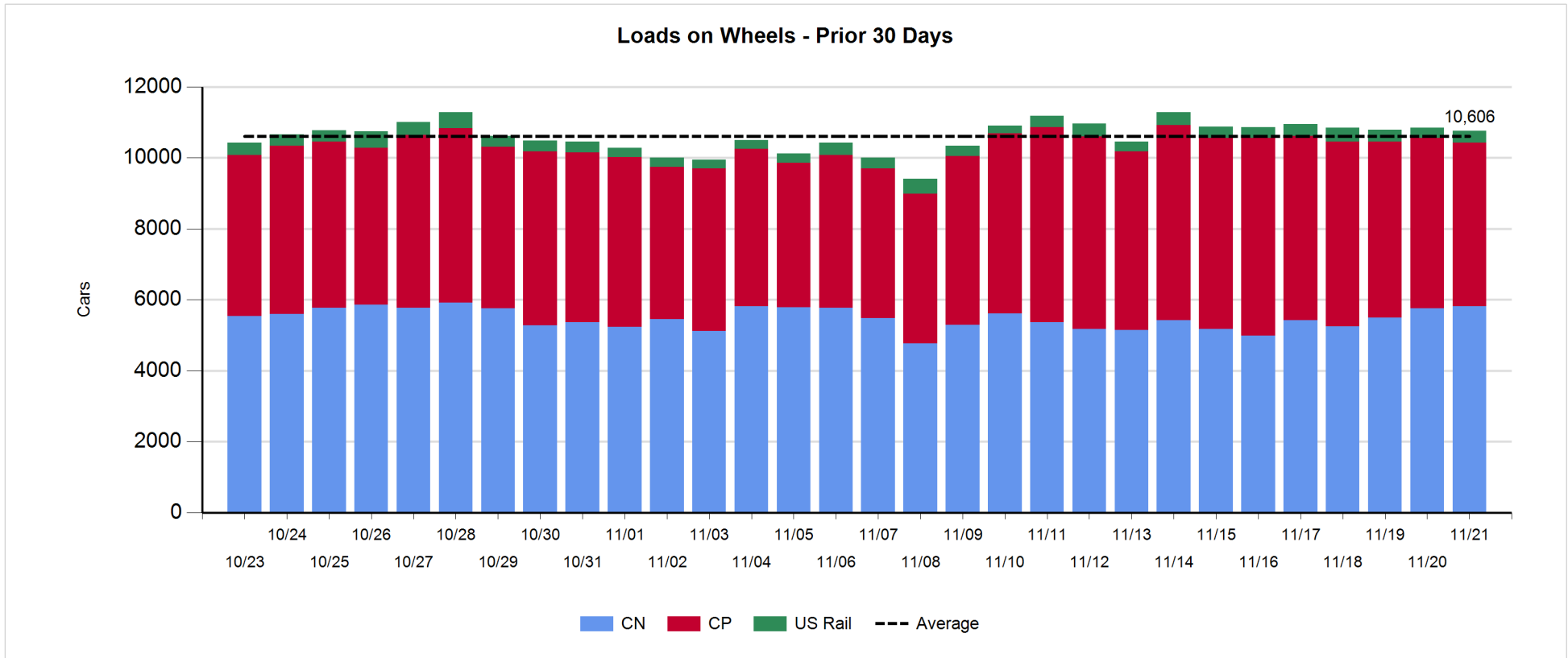
- CN and CP unloaded a total of 1,279 cars at the three western ports - in line with average Tuesday performance during the prior 30 days. Through the first 2 days of week 18 unloads at the three western ports are tracking 50% higher (+868) than the prior week
- Vancouver
  - Total of 801 cars reported unloaded by CN and CP at the Port of Vancouver; CN - 373 and CP - 428
  - There are currently 871 cars on hand at Vancouver waiting placement for unloading
- Thunder Bay
  - Total of 246 cars reported unloaded by CN and CP in the prior 24 hours
  - Cars at Thunder Bay waiting placement now at 87

**Daily Loads on Wheels - 11/21/2017**

	E Canada	Prince Rupert	Thunder Bay	USA/MEX	Vancouver	Total
CN	446	919	551	278	3,618	5,812
CP	65		882	215	3,452	4,614
Short Line	2				42	44
US Rail				295		295
	513	919	1,433	788	7,112	10,765

**Change in Loads on Wheels - Prior 24 Hours**

	E Canada	Prince Rupert	Thunder Bay	USA/MEX	Vancouver	Total
CN	-3	-211	-50	-142	458	52
CP	22		-40	49	-214	-183
Short Line	-4				-17	-21
US Rail				64		64
	15	-211	-90	-29	227	-88

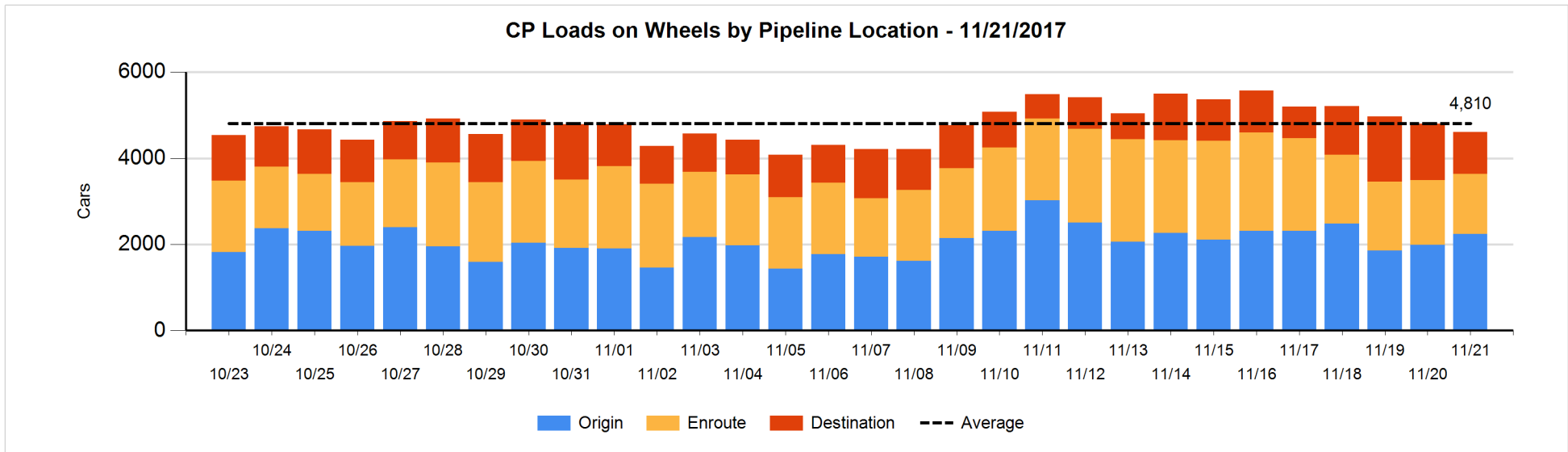
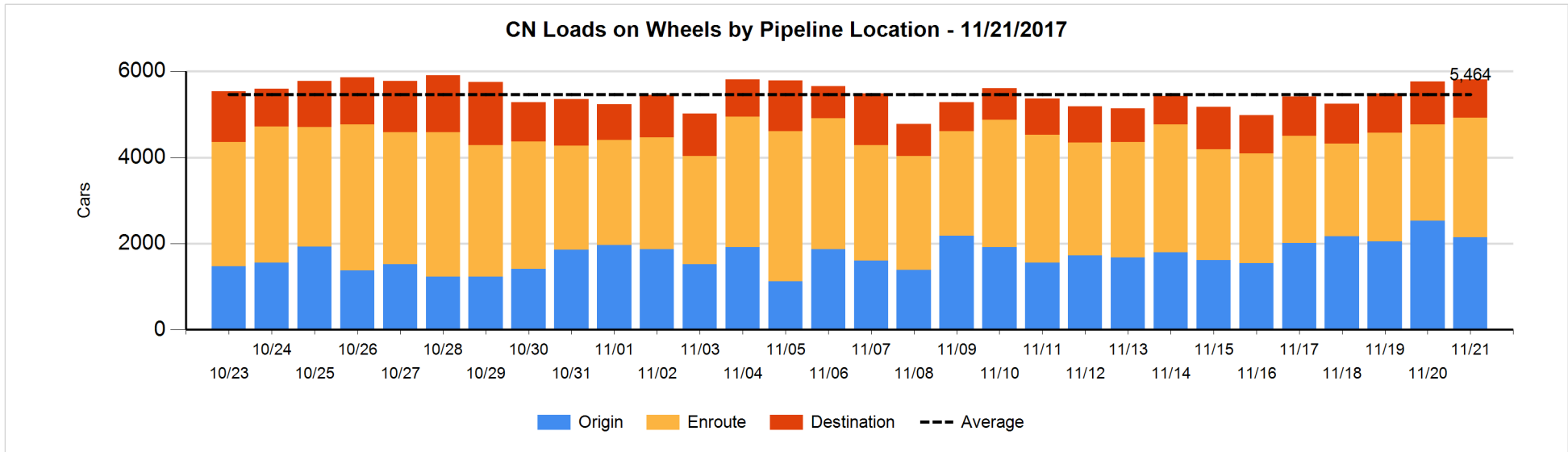


**Daily Loads on Wheels By Pipeline Location - 11/21/2017**

	E Canada	Prince Rupert	Thunder Bay	USA/MEX	Vancouver	Total
CN						
Origin	25	163		68	1,889	2,145
Enroute	346	510	457	165	1,297	2,775
Destination	75	246	94	45	432	892
	446	919	551	278	3,618	5,812
CP						
Origin	28		566	180	1,465	2,239
Enroute	37		210	13	1,133	1,393
Destination			106	22	854	982
	65		882	215	3,452	4,614
US Rail / Short Line						
Origin						
Enroute				214		214
Destination	2			81	42	125
	2			295	42	339

**Change in Daily Loads on Wheels By Pipeline Location - Prior 24 Hours**

	E Canada	Prince Rupert	Thunder Bay	USA/MEX	Vancouver	Total
CN						
Origin	-97	-112	-207	3	25	-388
Enroute	71	-20	115	-149	521	538
Destination	23	-79	42	4	-88	-98
	-3	-211	-50	-142	458	52
CP						
Origin	21		57	53	125	256
Enroute	1		-15	-16	-88	-118
Destination			-82	12	-250	-320
	22		-40	49	-213	-182
US Rail / Short Line						
Origin						
Enroute	-1			76		75
Destination	-3			-12	-17	-32
	-4			64	-17	43

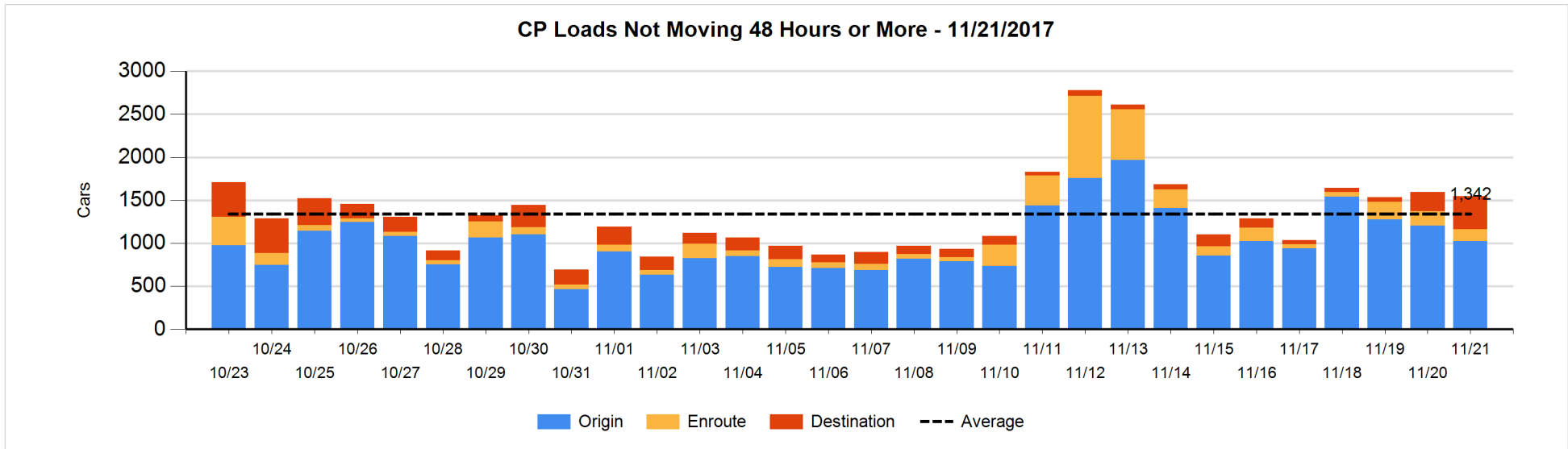
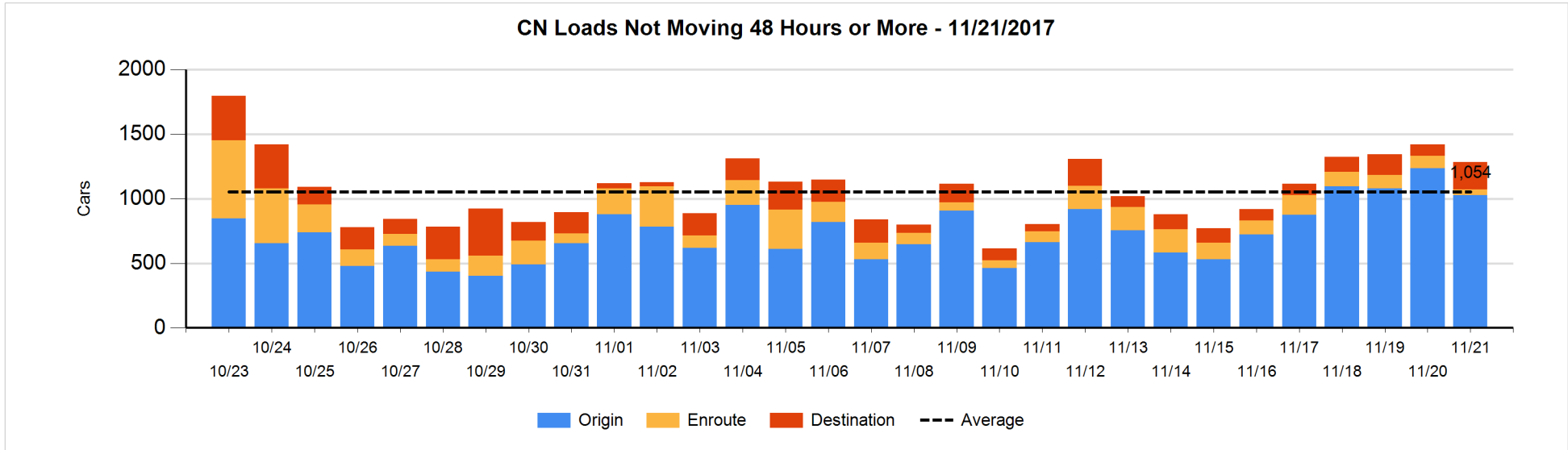


**Loads Not Moving 48 Hours or More - 11/21/2017**

	E Canada	Prince Rupert	Thunder Bay	USA/MEX	Vancouver	Total
<b>CN</b>						
Origin		43		50	934	1027
Enroute	13	16		4	12	45
Destination	45	3	4	5	154	211
	58	62	4	59	1100	1283
<b>CP</b>						
Origin			187	124	715	1026
Enroute	7			2	125	134
Destination			19	6	360	385
	7		206	132	1200	1545
<b>US Rail / Short Line</b>						
Origin						
Enroute				29		29
Destination				33	18	51
				62	18	80

**Change in Loads Not Moving 48 Hours or More - 11/21/2017**

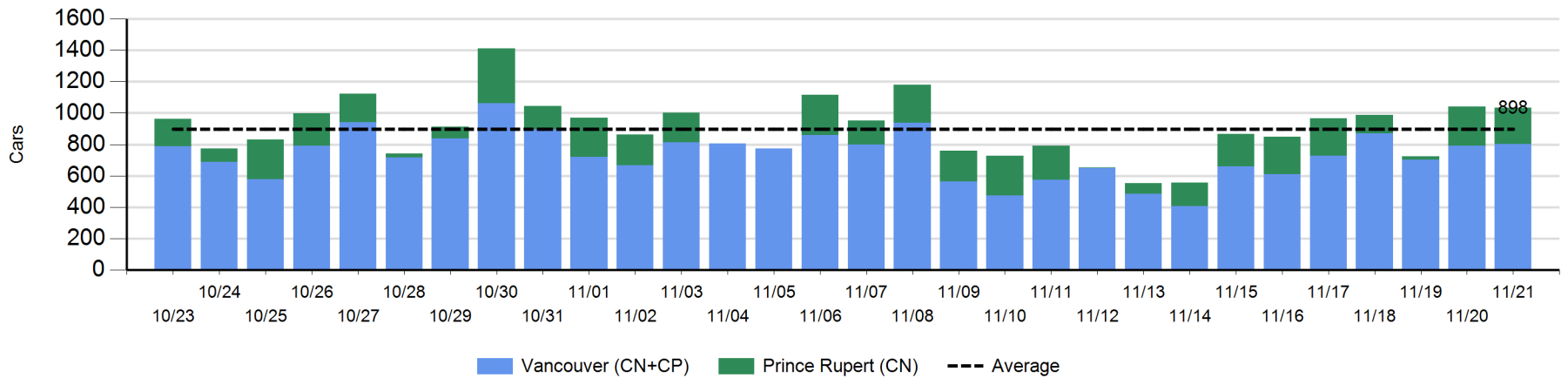
	E Canada	Prince Rupert	Thunder Bay	USA/MEX	Vancouver	Total
<b>CN</b>						
Origin		43	-103	-1	-147	-208
Enroute	-1	-1		0	-50	-52
Destination	9	0	0	2	113	124
	8	42	-103	1	-84	-136
<b>CP</b>						
Origin			-18	0	-162	-180
Enroute	-1			-5	-27	-33
Destination			17	-4	152	165
	-1		-1	-9	-37	-48
<b>US Rail / Short Line</b>						
Origin						
Enroute	-1			-23		-24
Destination				8	1	9
	-1			-15	1	-15



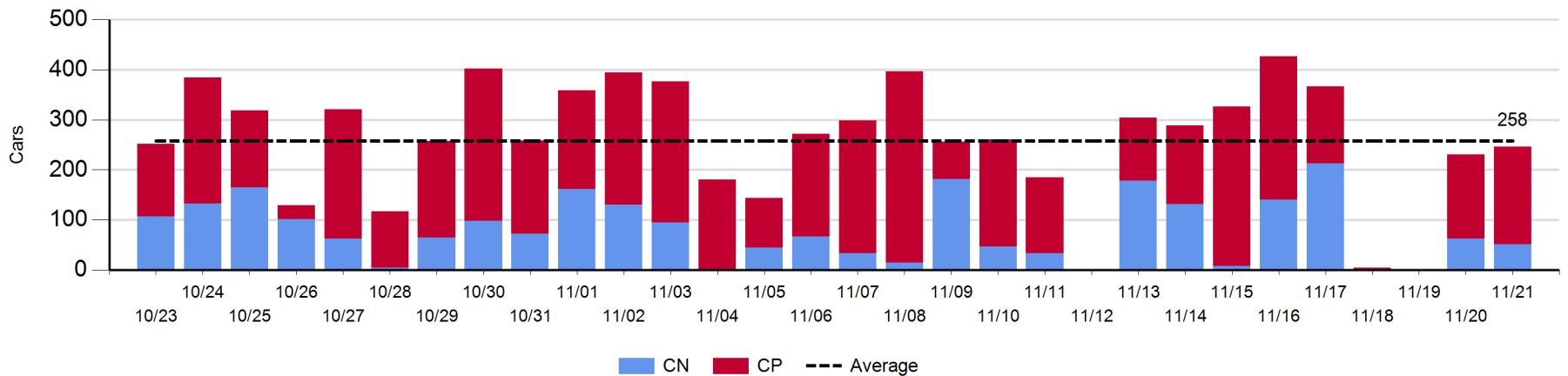
**Port Unloads - 11/21/2017**

	Prince Rupert	Vancouver	West Coast Total	Thunder Bay	Total
CN	232	373	605	51	656
CP		428	428	195	623
	232	801	1,033	246	1,279

**West Coast Port Unloads - Prior 30 Days**



**Thunder Bay Port Unloads - Prior 30 Days**



**Port Terminal Status**

**Vancouver**

Daily Activity for 11/21/2017

	Cars Arrived	Cars Received in Interchange	Cars Delivered in Interchange	Cars Placed for Unloading	Loads on Wheels at Destination As of 11/21/2017
CN	109	224		323	432
CP	365		228	408	854
SRY		4		21	42

**Port Unloads**

	11/21	11/20	Week To Date	Last Week
CN	373	321	694	1,979
CP	428	469	897	2,479
SRY	21	12	33	32

**Age Profile of Loaded Cars Waiting Placement for Unloading**

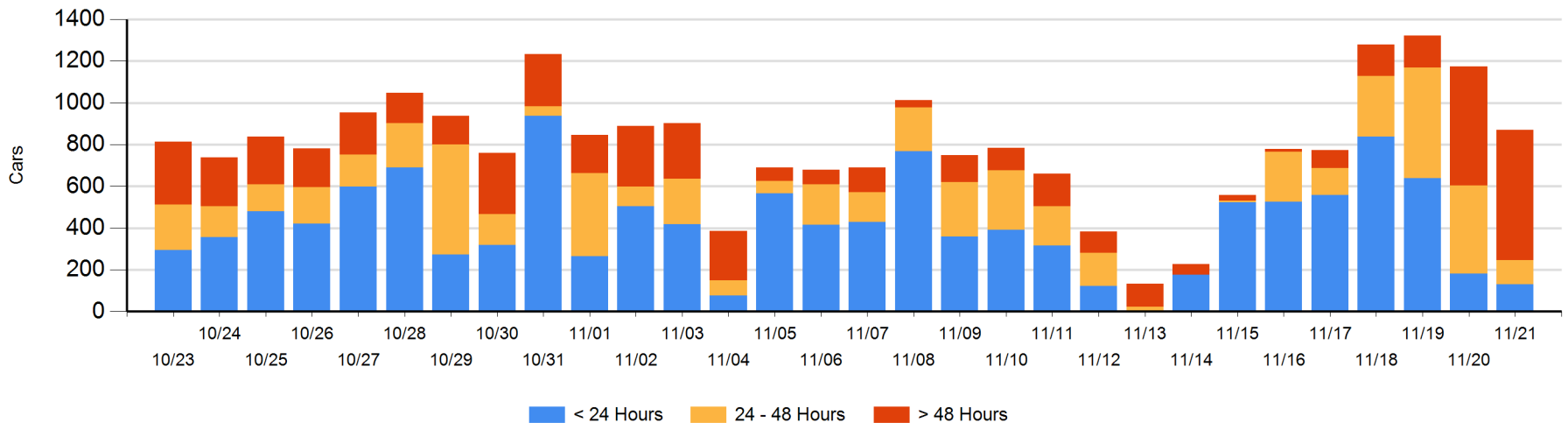
**Today**

	< 24 Hrs	24 - 48 Hrs	> 48-72 Hrs	> 72 Hrs	Total On Hand
CN	6	64	35	194	299
CP	125	52	277	118	572
SRY					0

**Change in Last 24 Hours**

	< 24 Hrs	24-48 Hrs	48 - 72 Hrs	> 72 Hrs
CN	-74	-23	-297	155
CP	24	-283	169	27
SRY				

**Loaded Cars on Hand Vancouver Waiting for Placement - Last 30 Days All Railways**





**Port Terminal Status**

**Prince Rupert**

Daily Activity for 11/21/2017

	Cars Arrived	Cars Received in Interchange	Cars Delivered in Interchange	Cars Placed for Unloading	Loads on Wheels at Destination As of 11/21/2017
CN	94			93	246

**Port Unloads**

	11/21	11/20	Week To Date	Last Week
CN	232	251	483	1,042

**Age Profile of Loaded Cars Waiting Placement for Unloading**

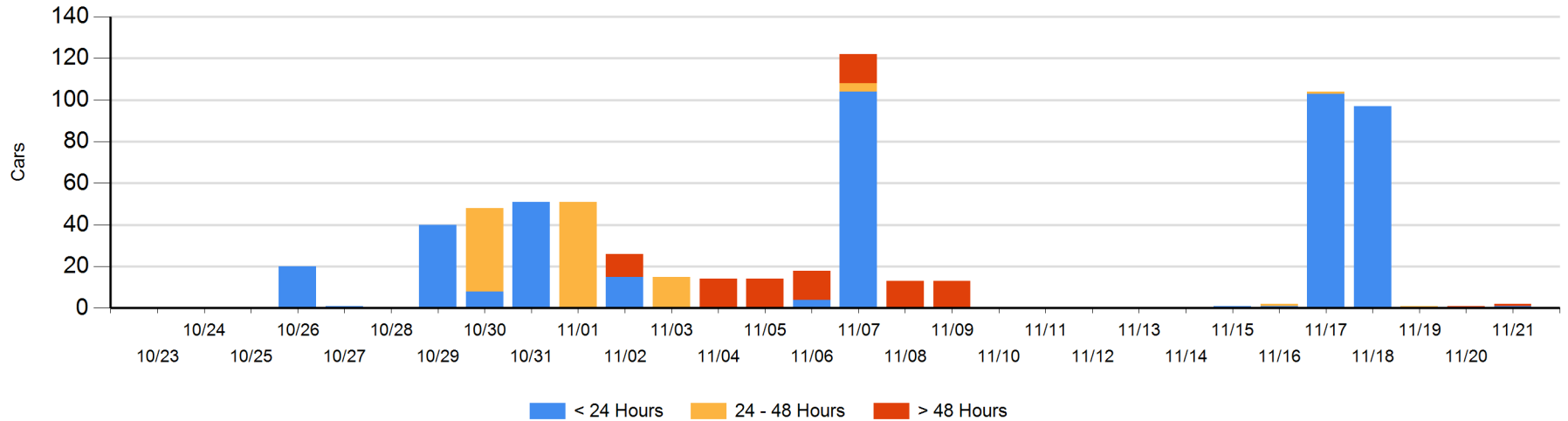
**Today**

	< 24 Hrs	24 - 48 Hrs	> 48-72 Hrs	> 72 Hrs	Total On Hand
CN	1			1	2

**Change in Last 24 Hours**

	< 24 Hrs	24-48 Hrs	48 - 72 Hrs	> 72 Hrs
CN	1		-1	1

Loaded Cars on Hand Prince Rupert Waiting for Placement - Last 30 Days All Railways



**Port Terminal Status**

**Thunder Bay**

Daily Activity for 11/21/2017

	Cars Arrived	Cars Received in Interchange	Cars Delivered in Interchange	Cars Placed for Unloading	Loads on Wheels at Destination As of 11/21/2017
CN	93			41	94
CP	115			189	106

**Port Unloads**

	11/21	11/20	Week To Date	Last Week
CN	51	62	113	671
CP	195	169	364	1,045

**Age Profile of Loaded Cars Waiting Placement for Unloading**

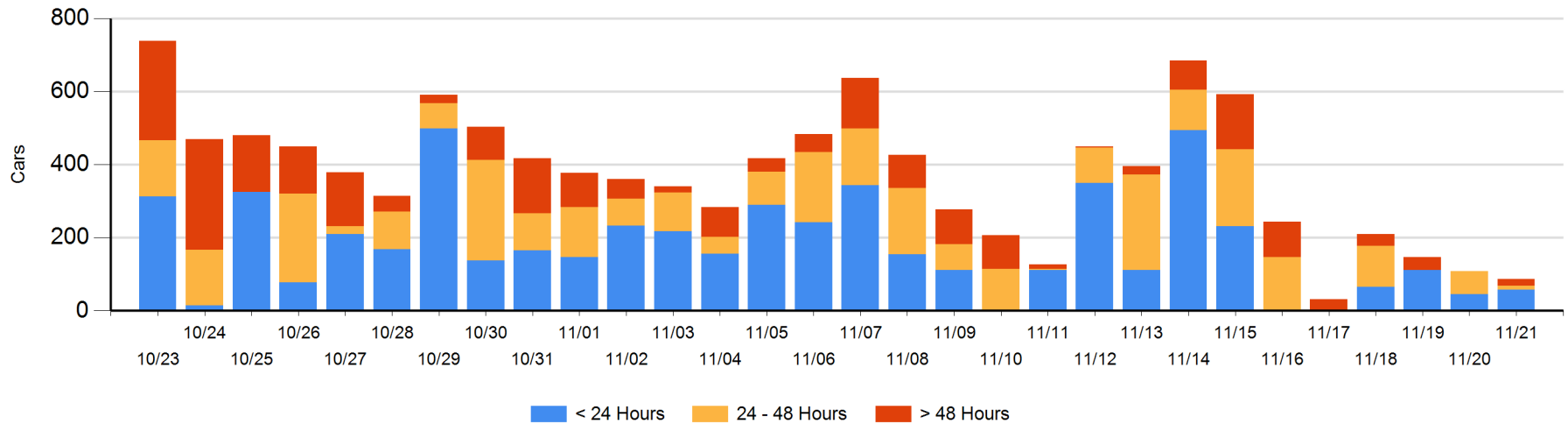
**Today**

	< 24 Hrs	24 - 48 Hrs	> 48-72 Hrs	> 72 Hrs	Total On Hand
CN	52	12			64
CP	5		18		23

**Change in Last 24 Hours**

	< 24 Hrs	24-48 Hrs	48 - 72 Hrs	> 72 Hrs
CN	40	12		
CP	-29	-63	18	

**Loaded Cars on Hand Thunder Bay Waiting for Placement - Last 30 Days All Railways**



## Measurement Definitions

Loads on Wheels	<p>Count of loaded rail cars including all rail cars that have been released loaded at origin and have not been reported by the railway as unloaded at destination.</p> <p>Counts include all rail cars (hopper cars and boxcars) moving within a pipeline.</p>
Loads Not Moving	<p>Loaded rail cars for which the railways have not reported a movement event for 48 hours or more whether the rail car is at origin, enroute or at destination.</p>
Port Unloads	<p>Count of rail cars reported by railways as unloaded at the western port destinations of Vancouver, Prince Rupert and Thunder Bay.</p> <p>Unload counts include all rail cars (hopper cars and boxcars) unloaded by all receivers including major port terminals, transloaders and other receivers.</p>
Cars Arrived	<p>Count of rail cars reported as arrived at the destination railway terminal.</p>
Cars Received in Interchange	<p>Count of rail cars received in interchange by each railway within a destination railway terminal. Interchange activity is tracked for the Vancouver and Thunder Bay pipelines as applicable.</p>
Cars Delivered in Interchange	<p>Count of rail cars delivered in interchange by each railway within a destination railway terminal. Interchange activity is tracked for the Vancouver and Thunder Bay pipelines as applicable.</p>
Cars Placed for Unloading	<p>Count of rail cars reported by the railways as placed loaded at the receiver's facility for unloading.</p>
Loads on Wheels at Destination	<p>Count of rail cars that remain under load within the destination railway terminal including rail cars that have been reported as placed for unloading but not yet reported as unloaded.</p>
Waiting Placement for Unloading	<p>Count of rail cars that have been reported as arrived at the destination railway terminal but not reported as placed for unloading by the railway.</p> <p>For the Ports of Vancouver, Prince Rupert and Thunder Bay the count of rail cars waiting placement for unloading is categorized by age – i.e. the elapsed time from arrival at destination to the current report date.</p>