

## Loads on Wheels

- System wide loads on wheels declined marginally in the prior 24 hours for the third consecutive day - loads now at 10,458 - in line with the trailing 30 day average
- In total loads on wheels decreased by 307 cars reflecting a decline in CN volumes (-294) with a slight increase in CP volumes.
- CN volumes declined in all corridors other than Vancouver (+95). System wide CN loads on wheels are now at 5,518 - in line with the trailing 30 day average.
- CP volumes increased slightly on a net basis (+37) reflecting declines in the Vancouver and Thunder Bay corridors offset by an increase in Eastern Canada traffic. System wide loads at 4,651 - 4% below the trailing 30 day average.
- Vancouver now at 7,140, Prince Rupert at 685 - the lowest level in the prior 30 days and 50% lower than the trailing 30 day average - and Thunder Bay at 1,265. The reduced volumes in the Prince Rupert corridor continue to reflect CN hopper car rationing policies where CN has rationed more than 700 hopper car orders in the prior 3 weeks.

## Loads Not Moving

- The count of loaded cars not moving on CN and CP for 48 hours or more increased by 671 cars in the prior 24 hours; total cars on CN and CP not moving for 48 hours or more now at its highest level in the prior 30 days - 3,499
- CN
  - The count of cars not moving increased by 203 cars on a net basis - loads on wheels now idle for 48 hours or more at 1,486
  - The increase is wholly attributable to increased counts in the Vancouver corridor (+239).
  - 80% of cars (1,187) are dwelling at origin locations with 97% of them destined to Vancouver
- CP
  - CP counts increased by 468 cars in total reflecting increases in the Vancouver (+334) and Thunder Bay (+133) corridors - idle cars now at 2,013
  - 70% of cars are dwelling at origin - 1,420 cars - 70% of them destined to Vancouver.

## Port Performance

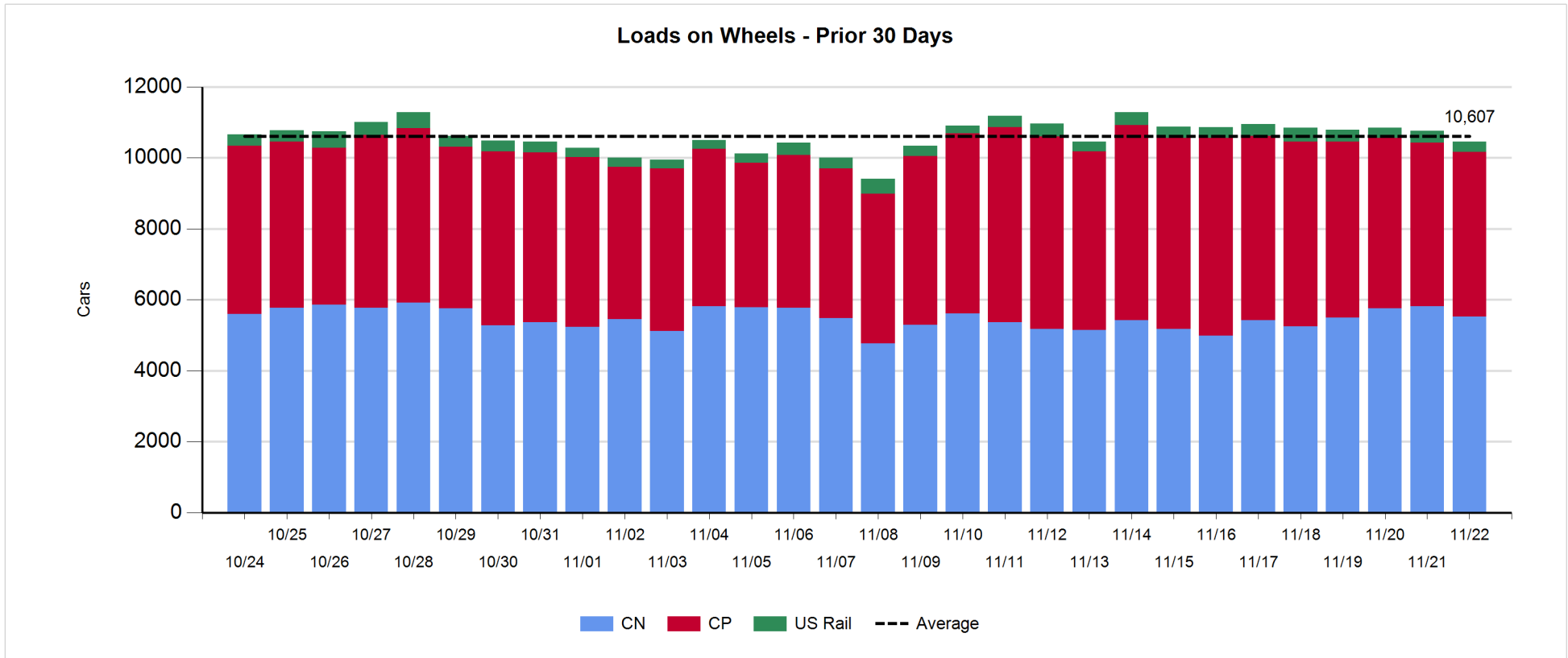
- CN and CP unloaded a total of 1,203 cars at the three western ports - some 15% below average Wednesday performance during the prior 30 days. Through the first 3 days of week 17 unloads at the three western ports continue to track 30% higher (+887) than the prior week
- Vancouver
  - Total of 611 cars reported unloaded by CN and CP at the Port of Vancouver; CN - 241 and CP - 370
  - There are currently 1,002 cars on hand at Vancouver waiting placement for unloading
- Thunder Bay
  - Total of 358 cars reported unloaded by CN and CP in the prior 24 hours
  - Cars at Thunder Bay waiting placement now at 187

**Daily Loads on Wheels - 11/22/2017**

	E Canada	Prince Rupert	Thunder Bay	USA/MEX	Vancouver	Total
CN	423	685	435	262	3,713	5,518
CP	166		830	261	3,394	4,651
Short Line	2				33	35
US Rail				254		254
	591	685	1,265	777	7,140	10,458

**Change in Loads on Wheels - Prior 24 Hours**

	E Canada	Prince Rupert	Thunder Bay	USA/MEX	Vancouver	Total
CN	-23	-234	-116	-16	95	-294
CP	101		-52	46	-58	37
Short Line	0				-9	-9
US Rail				-41		-41
	78	-234	-168	-11	28	-307

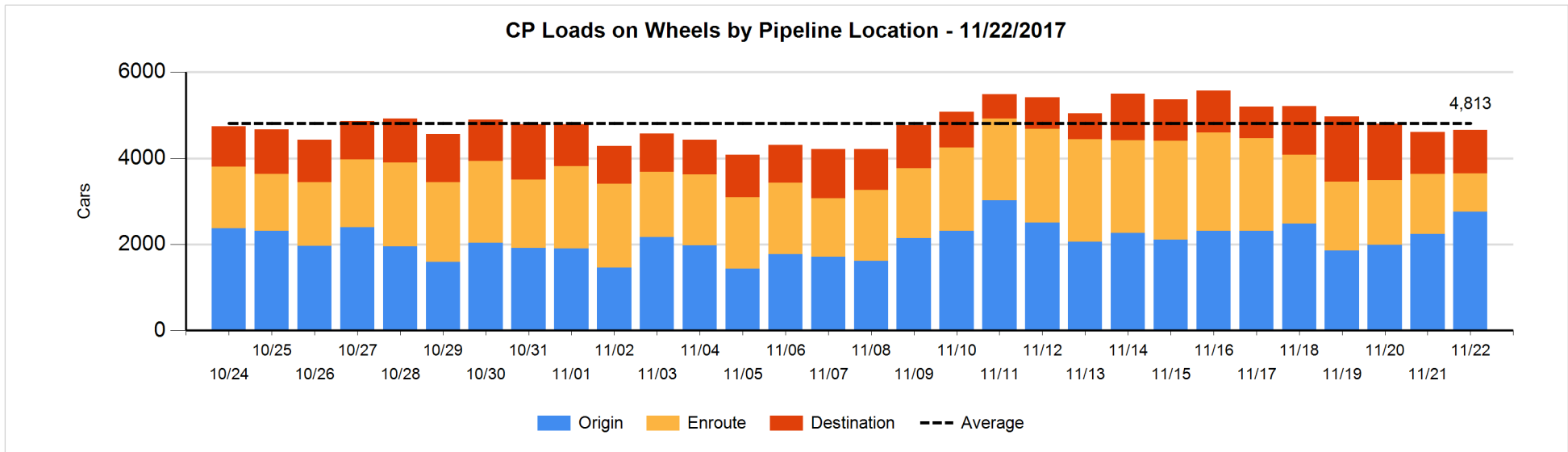
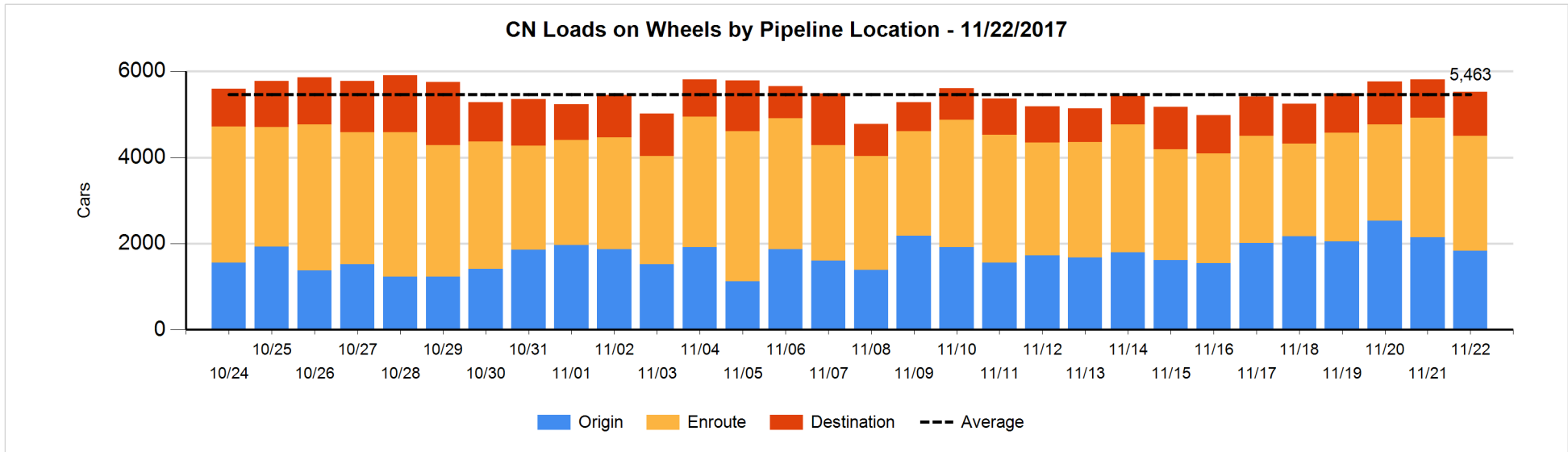


**Daily Loads on Wheels By Pipeline Location - 11/22/2017**

	E Canada	Prince Rupert	Thunder Bay	USA/MEX	Vancouver	Total
CN						
Origin	7	45	1	5	1,772	1,830
Enroute	335	525	205	228	1,382	2,675
Destination	81	115	229	29	559	1,013
	423	685	435	262	3,713	5,518
CP						
Origin	106		605	227	1,815	2,753
Enroute	59		128	12	692	891
Destination	1		97	22	887	1,007
	166		830	261	3,394	4,651
US Rail / Short Line						
Origin						
Enroute				208		208
Destination	2			46	33	81
	2			254	33	289

**Change in Daily Loads on Wheels By Pipeline Location - Prior 24 Hours**

	E Canada	Prince Rupert	Thunder Bay	USA/MEX	Vancouver	Total
CN						
Origin	-18	-118	1	-63	-117	-315
Enroute	-11	15	-252	63	85	-100
Destination	6	-131	135	-16	127	121
	-23	-234	-116	-16	95	-294
CP						
Origin	78		39	47	350	514
Enroute	22		-82	-1	-441	-502
Destination	1		-9	0	33	25
	101		-52	46	-58	37
US Rail / Short Line						
Origin						
Enroute				-6		-6
Destination	0			-35	-9	-44
	0			-41	-9	-50

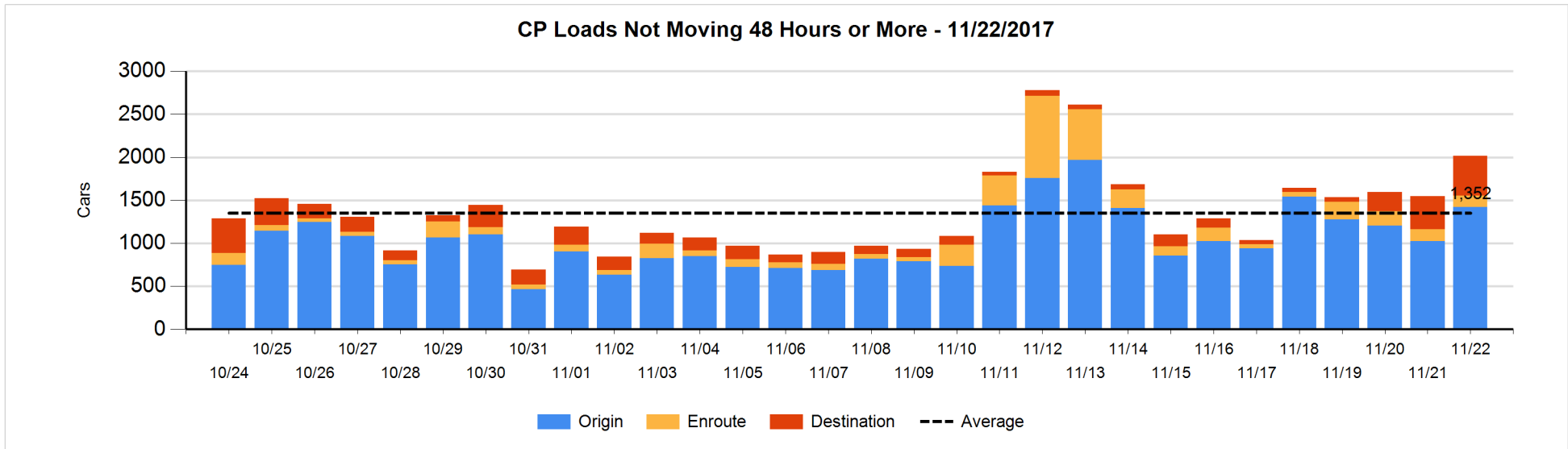
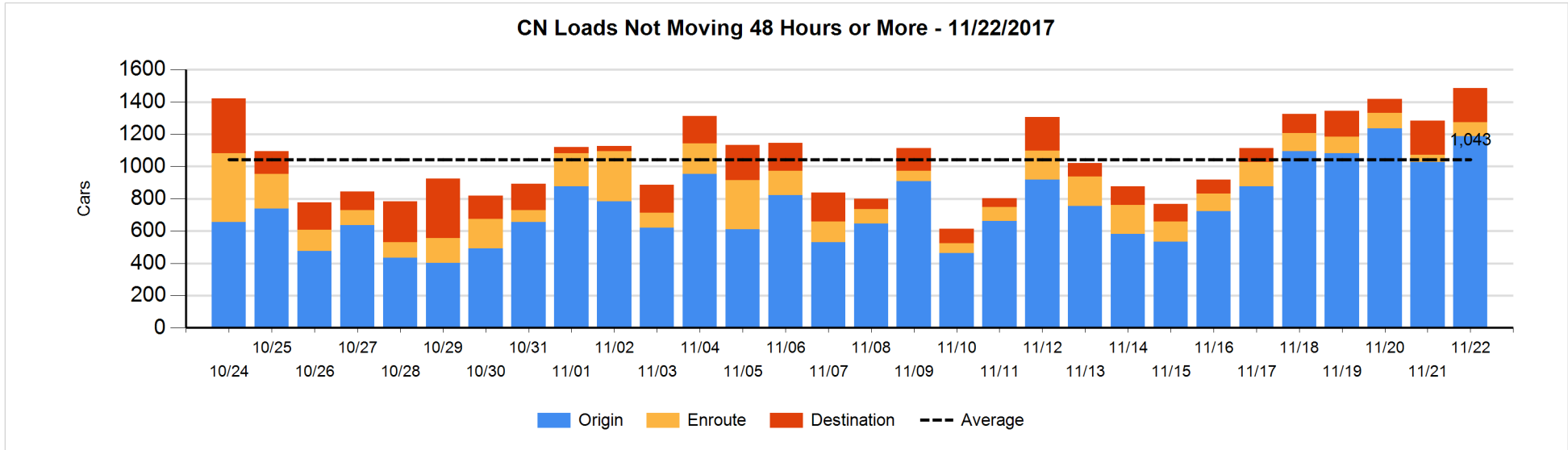


**Loads Not Moving 48 Hours or More - 11/22/2017**

	E Canada	Prince Rupert	Thunder Bay	USA/MEX	Vancouver	Total
<b>CN</b>						
Origin		43		1	1143	1187
Enroute	17	31	2	4	34	88
Destination	31	6	3	9	162	211
	48	80	5	14	1339	1486
<b>CP</b>						
Origin	3		339	124	954	1420
Enroute	6			1	127	134
Destination				6	453	459
	9		339	131	1534	2013
<b>US Rail / Short Line</b>						
Origin						
Enroute				24		24
Destination	2			27	18	47
	2			51	18	71

**Change in Loads Not Moving 48 Hours or More - 11/22/2017**

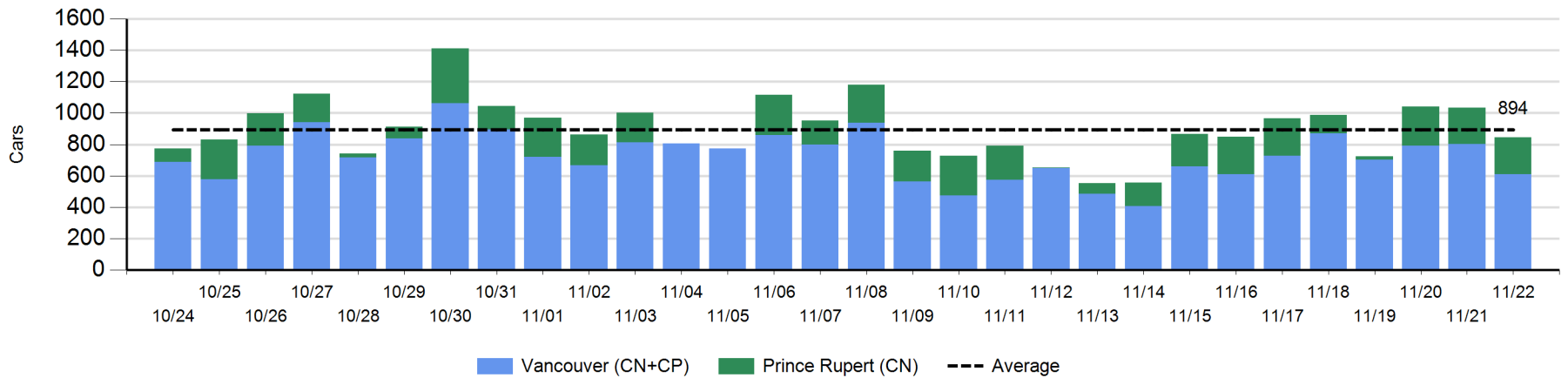
	E Canada	Prince Rupert	Thunder Bay	USA/MEX	Vancouver	Total
<b>CN</b>						
Origin		0		-49	209	160
Enroute	4	15	2	0	22	43
Destination	-14	3	-1	4	8	0
	-10	18	1	-45	239	203
<b>CP</b>						
Origin	3		152	0	239	394
Enroute	-1			-1	2	0
Destination			-19	0	93	74
	2		133	-1	334	468
<b>US Rail / Short Line</b>						
Origin						
Enroute				-5		-5
Destination	2			-6	0	-4
	2			-11	0	-9



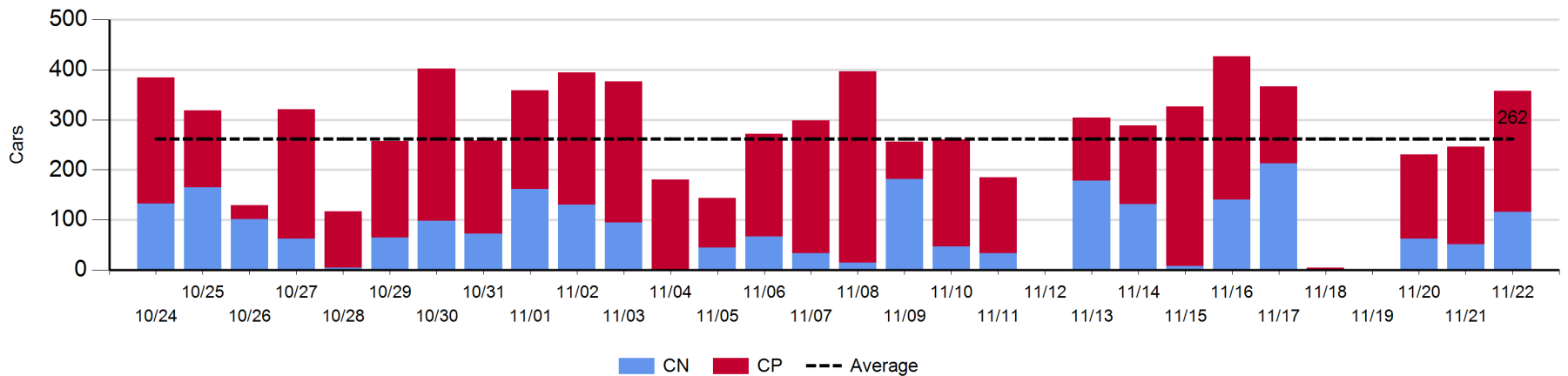
**Port Unloads - 11/22/2017**

	Prince Rupert	Vancouver	West Coast Total	Thunder Bay	Total
CN	234	241	475	116	591
CP		370	370	242	612
	234	611	845	358	1,203

**West Coast Port Unloads - Prior 30 Days**



**Thunder Bay Port Unloads - Prior 30 Days**



**Port Terminal Status**

**Vancouver**

Daily Activity for 11/22/2017

	Cars Arrived	Cars Received in Interchange	Cars Delivered in Interchange	Cars Placed for Unloading	Loads on Wheels at Destination As of 11/22/2017
CN	221	238	90	275	559
CP	555	90	238	358	887
SRY	1			12	33

**Port Unloads**

	11/22	11/21	Week To Date	Last Week
CN	241	373	935	1,979
CP	370	428	1,267	2,479
SRY	10	21	43	32

**Age Profile of Loaded Cars Waiting Placement for Unloading**

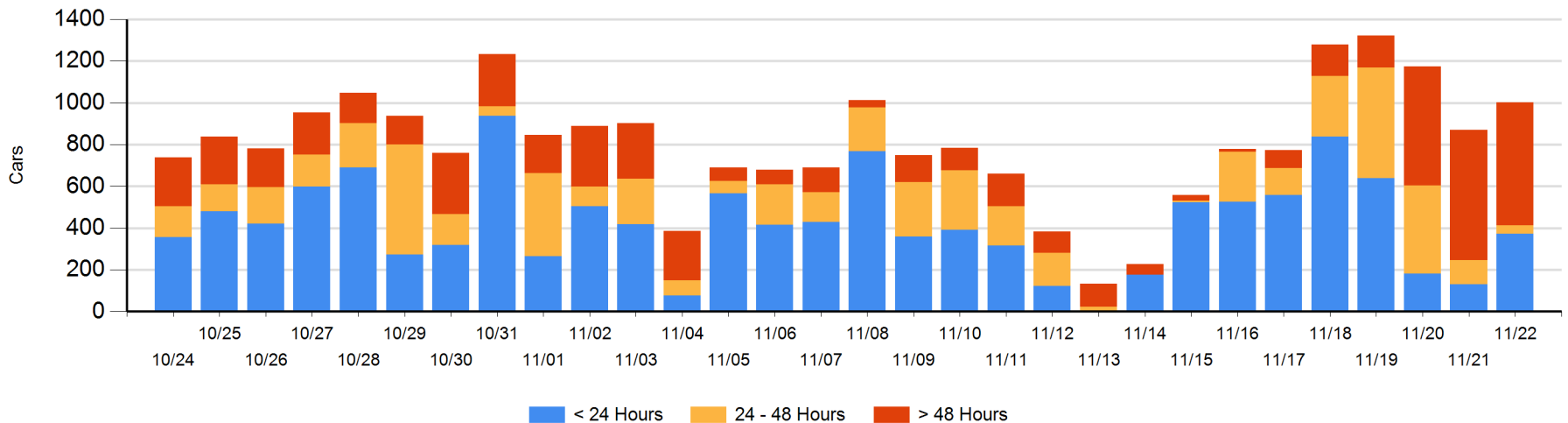
**Today**

	< 24 Hrs	24 - 48 Hrs	> 48-72 Hrs	> 72 Hrs	Total On Hand
CN	220	6	53	203	482
CP	153	35	52	280	520
SRY					0

**Change in Last 24 Hours**

	< 24 Hrs	24-48 Hrs	48 - 72 Hrs	> 72 Hrs
CN	214	-58	18	9
CP	28	-17	-225	162
SRY				

**Loaded Cars on Hand Vancouver Waiting for Placement - Last 30 Days All Railways**





**Port Terminal Status**

**Prince Rupert**

Daily Activity for 11/22/2017

	Cars Arrived	Cars Received in Interchange	Cars Delivered in Interchange	Cars Placed for Unloading	Loads on Wheels at Destination As of 11/22/2017
CN	164			164	115

**Port Unloads**

	11/22	11/21	Week To Date	Last Week
CN	234	232	717	1,042

**Age Profile of Loaded Cars Waiting Placement for Unloading**

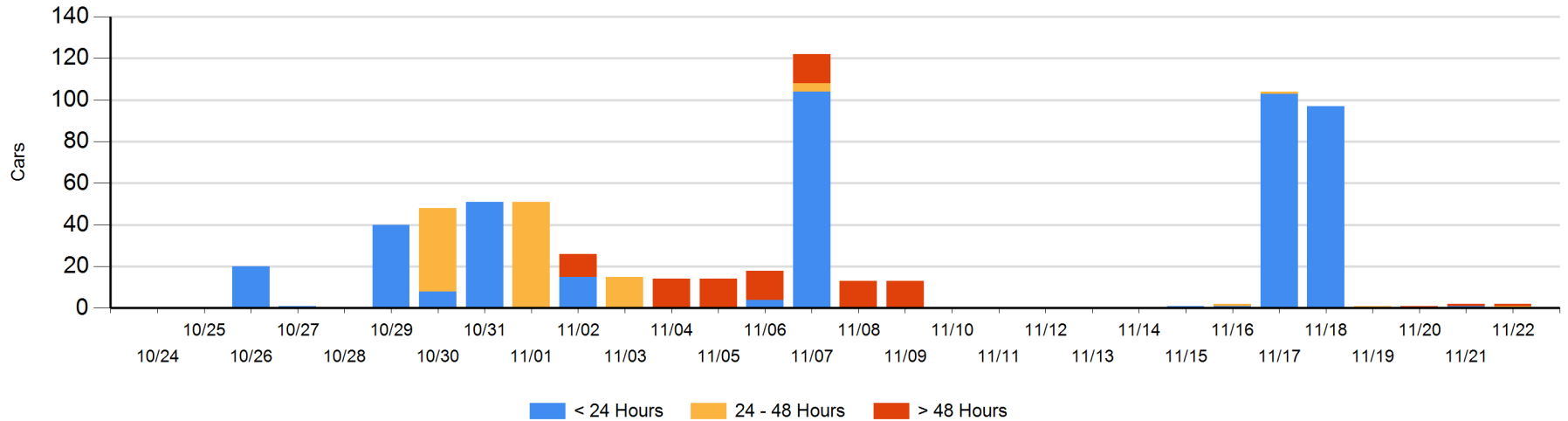
**Today**

	< 24 Hrs	24 - 48 Hrs	> 48-72 Hrs	> 72 Hrs	Total On Hand
CN		1		1	2

**Change in Last 24 Hours**

	< 24 Hrs	24-48 Hrs	48 - 72 Hrs	> 72 Hrs
CN	-1	1		0

Loaded Cars on Hand Prince Rupert Waiting for Placement - Last 30 Days All Railways



**Port Terminal Status**

**Thunder Bay**

Daily Activity for 11/22/2017

	Cars Arrived	Cars Received in Interchange	Cars Delivered in Interchange	Cars Placed for Unloading	Loads on Wheels at Destination As of 11/22/2017
CN	251			209	229
CP	235			177	97

**Port Unloads**

	11/22	11/21	Week To Date	Last Week
CN	116	51	229	671
CP	242	195	606	1,045

**Age Profile of Loaded Cars Waiting Placement for Unloading**

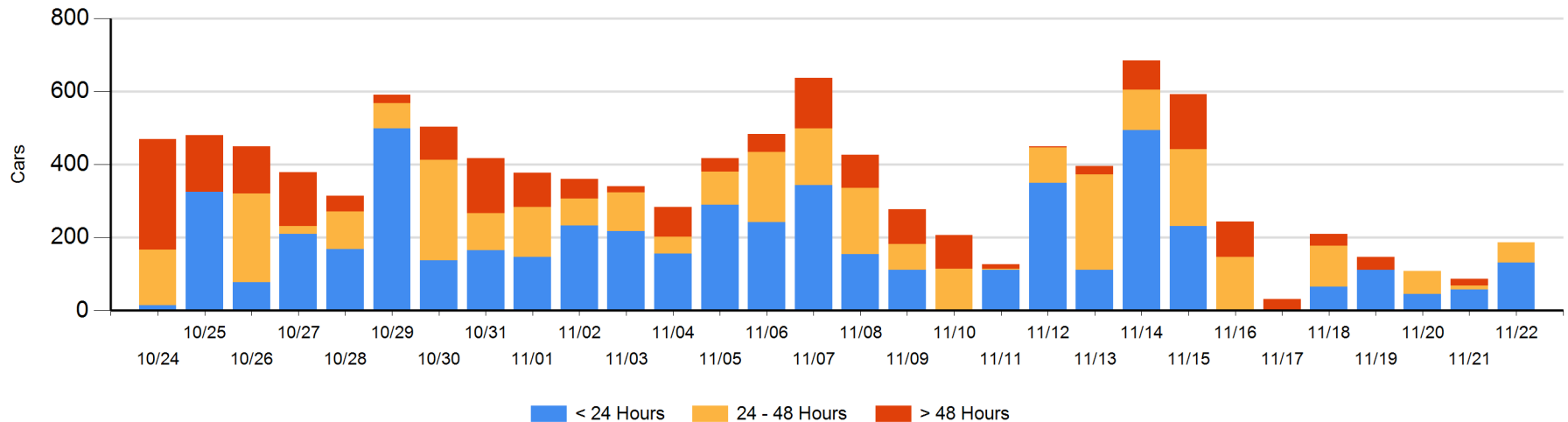
**Today**

	< 24 Hrs	24 - 48 Hrs	> 48-72 Hrs	> 72 Hrs	Total On Hand
CN	106				106
CP	25	56			81

**Change in Last 24 Hours**

	< 24 Hrs	24-48 Hrs	48 - 72 Hrs	> 72 Hrs
CN	54	-12		
CP	20	56	-18	

**Loaded Cars on Hand Thunder Bay Waiting for Placement - Last 30 Days All Railways**



## Measurement Definitions

Loads on Wheels	<p>Count of loaded rail cars including all rail cars that have been released loaded at origin and have not been reported by the railway as unloaded at destination.</p> <p>Counts include all rail cars (hopper cars and boxcars) moving within a pipeline.</p>
Loads Not Moving	<p>Loaded rail cars for which the railways have not reported a movement event for 48 hours or more whether the rail car is at origin, enroute or at destination.</p>
Port Unloads	<p>Count of rail cars reported by railways as unloaded at the western port destinations of Vancouver, Prince Rupert and Thunder Bay.</p> <p>Unload counts include all rail cars (hopper cars and boxcars) unloaded by all receivers including major port terminals, transloaders and other receivers.</p>
Cars Arrived	<p>Count of rail cars reported as arrived at the destination railway terminal.</p>
Cars Received in Interchange	<p>Count of rail cars received in interchange by each railway within a destination railway terminal. Interchange activity is tracked for the Vancouver and Thunder Bay pipelines as applicable.</p>
Cars Delivered in Interchange	<p>Count of rail cars delivered in interchange by each railway within a destination railway terminal. Interchange activity is tracked for the Vancouver and Thunder Bay pipelines as applicable.</p>
Cars Placed for Unloading	<p>Count of rail cars reported by the railways as placed loaded at the receiver's facility for unloading.</p>
Loads on Wheels at Destination	<p>Count of rail cars that remain under load within the destination railway terminal including rail cars that have been reported as placed for unloading but not yet reported as unloaded.</p>
Waiting Placement for Unloading	<p>Count of rail cars that have been reported as arrived at the destination railway terminal but not reported as placed for unloading by the railway.</p> <p>For the Ports of Vancouver, Prince Rupert and Thunder Bay the count of rail cars waiting placement for unloading is categorized by age – i.e. the elapsed time from arrival at destination to the current report date.</p>