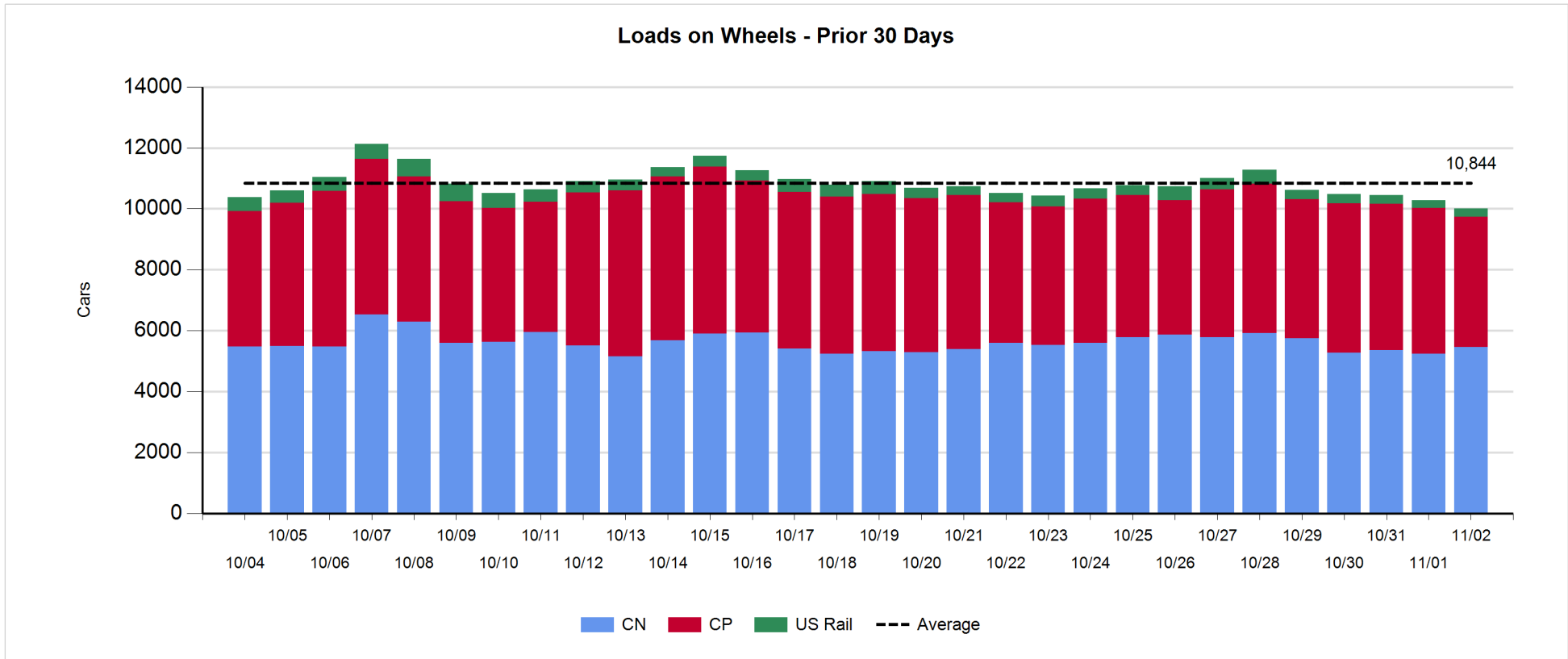


Daily Loads on Wheels - 11/2/2017

	E Canada	Prince Rupert	Thunder Bay	USA/MEX	Vancouver	Total
CN	201	1,223	321	455	3,254	5,454
CP	101		1,057	204	2,922	4,284
Short Line	17				32	49
US Rail				222		222
	319	1,223	1,378	881	6,208	10,009

Change in Loads on Wheels - Prior 24 Hours

	E Canada	Prince Rupert	Thunder Bay	USA/MEX	Vancouver	Total
CN	7	61	-107	-16	279	224
CP	-15		-151	-42	-296	-504
Short Line	13				3	16
US Rail				-12		-12
	5	61	-258	-70	-14	-276

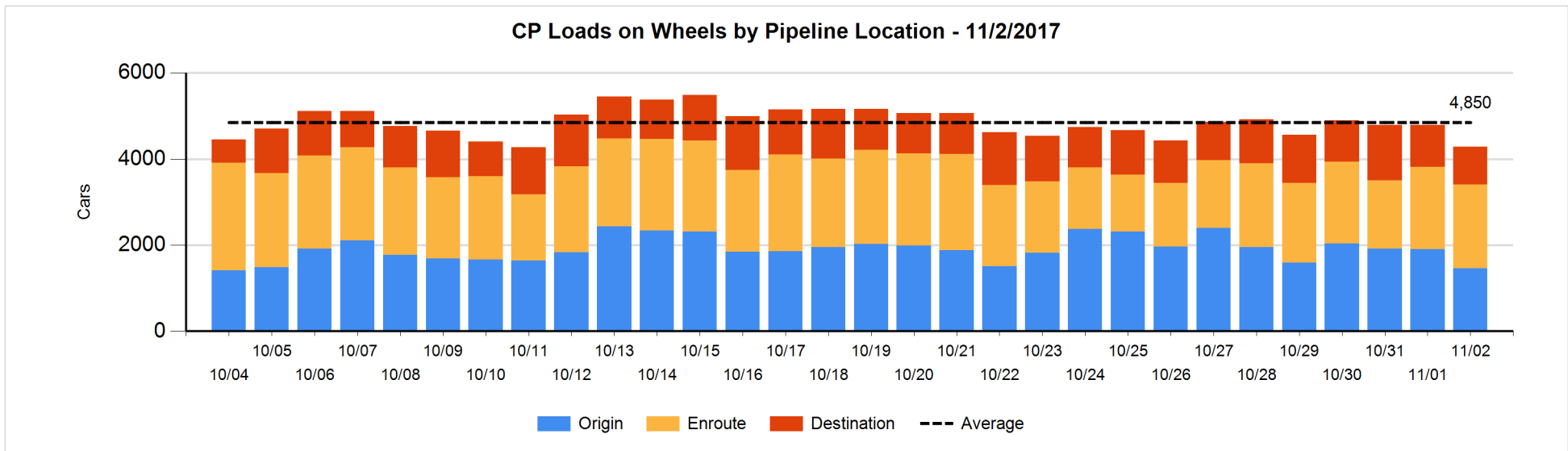
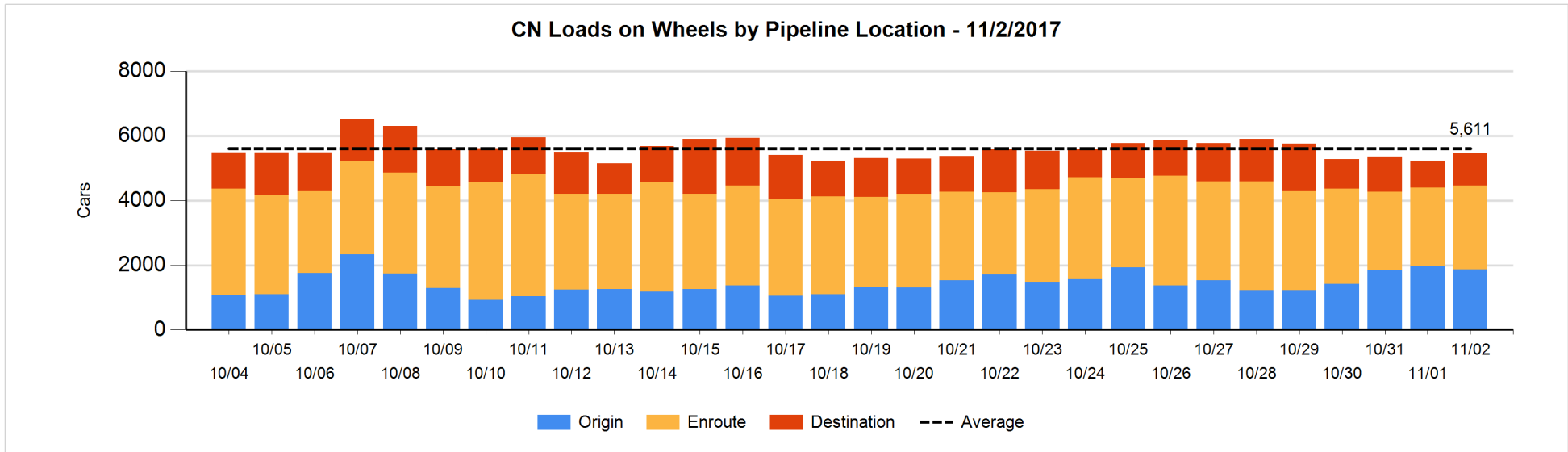


Daily Loads on Wheels By Pipeline Location - 11/2/2017

	E Canada	Prince Rupert	Thunder Bay	USA/MEX	Vancouver	Total
CN						
Origin	49	548	52	134	1,080	1,863
Enroute	124	602	187	314	1,379	2,606
Destination	28	73	82	7	795	985
	201	1,223	321	455	3,254	5,454
CP						
Origin	47		274	51	1,091	1,463
Enroute	43		440	139	1,325	1,947
Destination	11		343	14	506	874
	101		1,057	204	2,922	4,284
US Rail / Short Line						
Origin						
Enroute				203		203
Destination	17			19	32	68
	17			222	32	271

Change in Daily Loads on Wheels By Pipeline Location - Prior 24 Hours

	E Canada	Prince Rupert	Thunder Bay	USA/MEX	Vancouver	Total
CN						
Origin	14	152	-2	-29	-236	-101
Enroute	12	-48	-10	12	198	164
Destination	-19	-43	-95	1	317	161
	7	61	-107	-16	279	224
CP						
Origin	-5		-105	1	-331	-440
Enroute	-10		-4	-24	67	29
Destination	0		-42	-19	-32	-93
	-15		-151	-42	-296	-504
US Rail / Short Line						
Origin						
Enroute	-4			8		4
Destination	17			-20	3	0
	13			-12	3	4

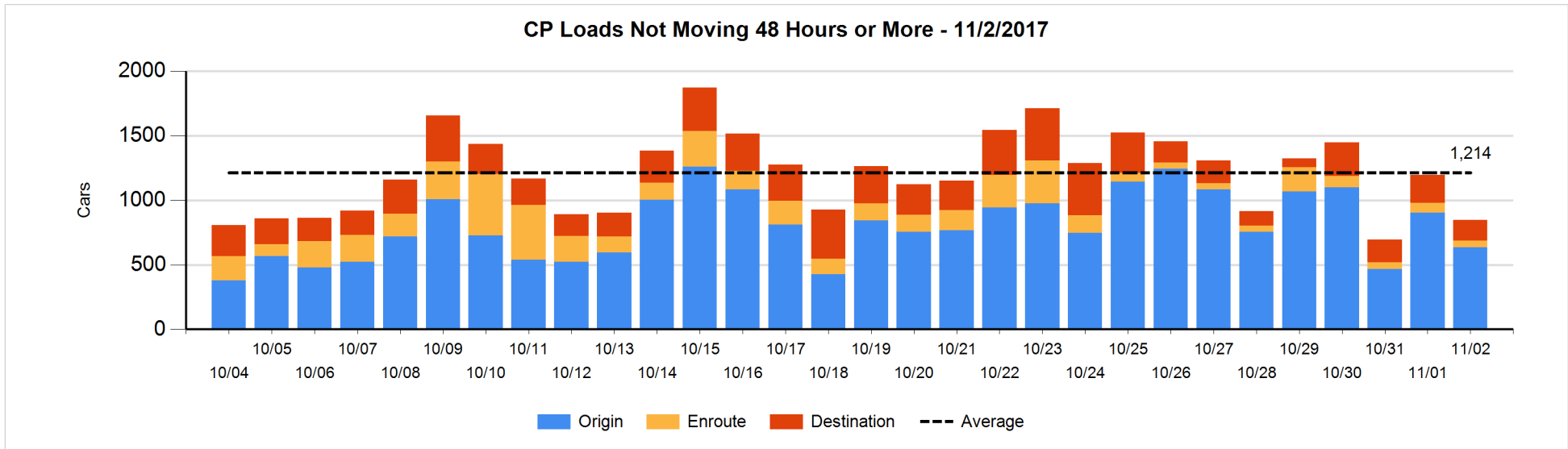
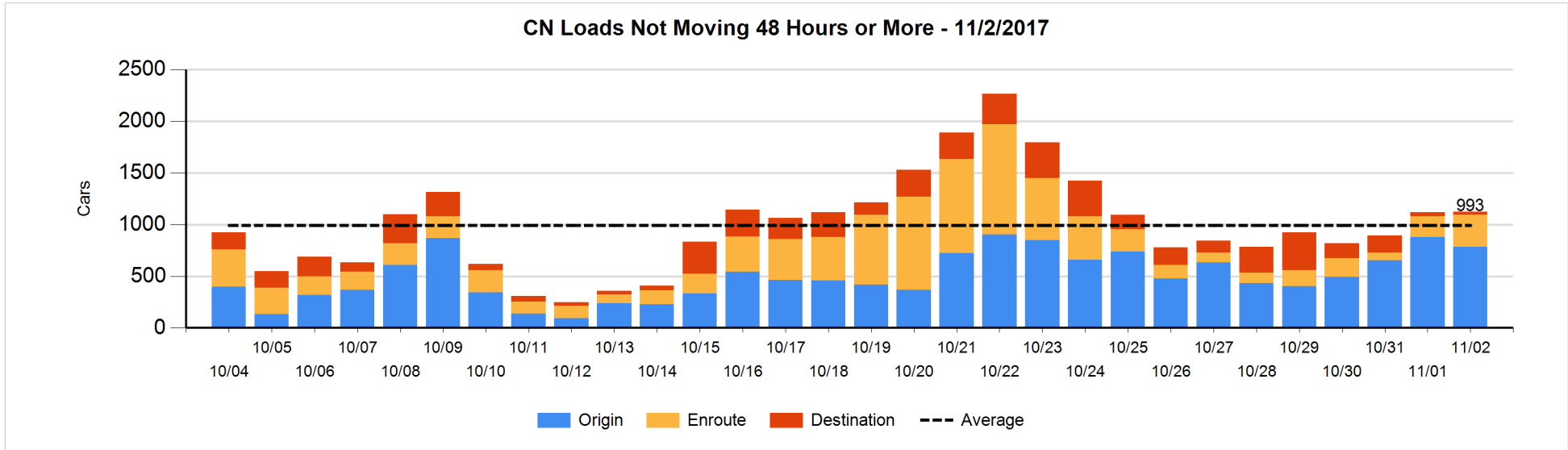


Loads Not Moving 48 Hours or More - 11/2/2017

	E Canada	Prince Rupert	Thunder Bay	USA/MEX	Vancouver	Total
CN						
Origin	1	201		6	576	784
Enroute	11	162	1	32	105	311
Destination	6	13	3	3	6	31
	18	376	4	41	687	1126
CP						
Origin	17		142	50	424	633
Enroute	12		3	15	23	53
Destination	1		33	10	116	160
	30		178	75	563	846
US Rail / Short Line						
Origin						
Enroute				87		87
Destination				16	3	19
				103	3	106

Change in Loads Not Moving 48 Hours or More - 11/2/2017

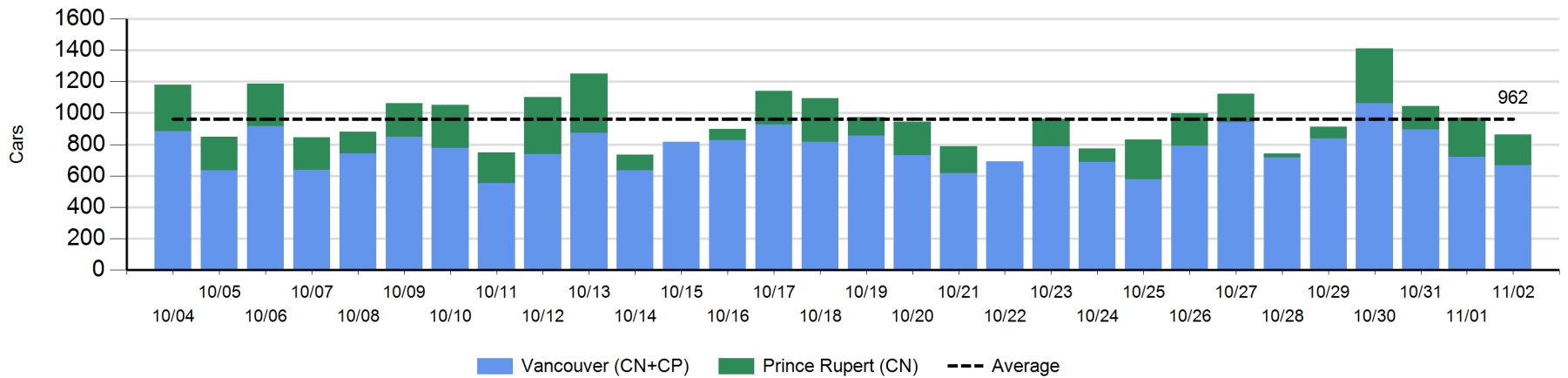
	E Canada	Prince Rupert	Thunder Bay	USA/MEX	Vancouver	Total
CN						
Origin	-7	0		-8	-79	-94
Enroute	1	53	0	-44	98	108
Destination	-1	-7	0	0	1	-7
	-7	46	0	-52	20	7
CP						
Origin	9		37	0	-315	-269
Enroute	10		0	-41	5	-26
Destination	-2		-25	10	-36	-53
	17		12	-31	-346	-348
US Rail / Short Line						
Origin						
Enroute				2		2
Destination				-9	0	-9
				-7	0	-7



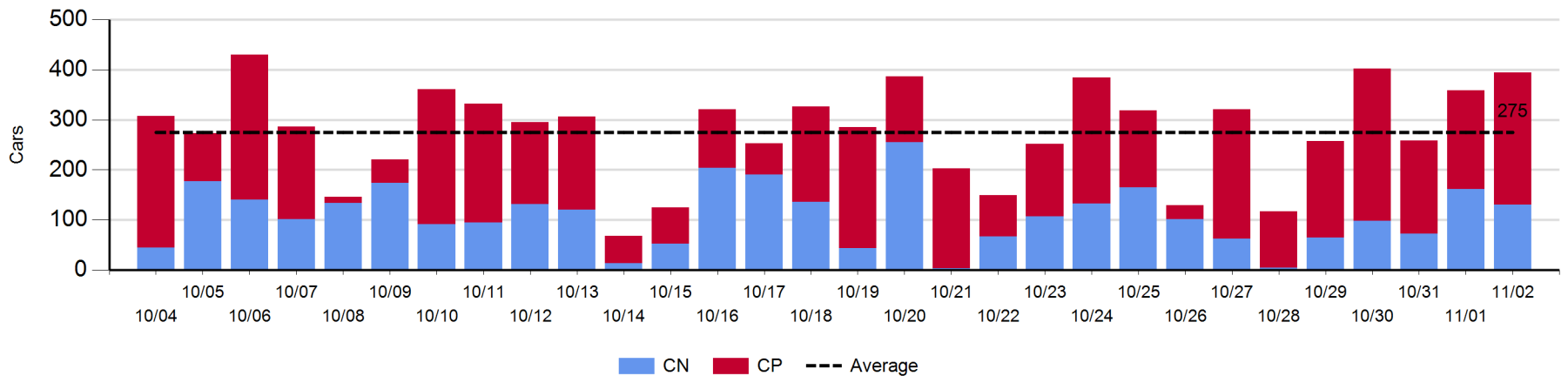
Port Unloads - 11/2/2017

	Prince Rupert	Vancouver	West Coast Total	Thunder Bay	Total
CN	197	364	561	130	691
CP		303	303	264	567
	197	667	864	394	1,258

West Coast Port Unloads - Prior 30 Days



Thunder Bay Port Unloads - Prior 30 Days



Port Terminal Status

Vancouver

Daily Activity for 11/2/2017

	Cars Arrived	Cars Received in Interchange	Cars Delivered in Interchange	Cars Placed for Unloading	Loads on Wheels at Destination As of 11/2/2017
CN	484	391	181	552	795
CP	474	177	391	354	506
SRY		4		14	32

Port Unloads

	11/02	11/01	Week To Date	Last Week
CN	364	380	1,837	2,728
CP	303	340	1,507	2,609
SRY	1	12	30	60

Age Profile of Loaded Cars Waiting Placement for Unloading

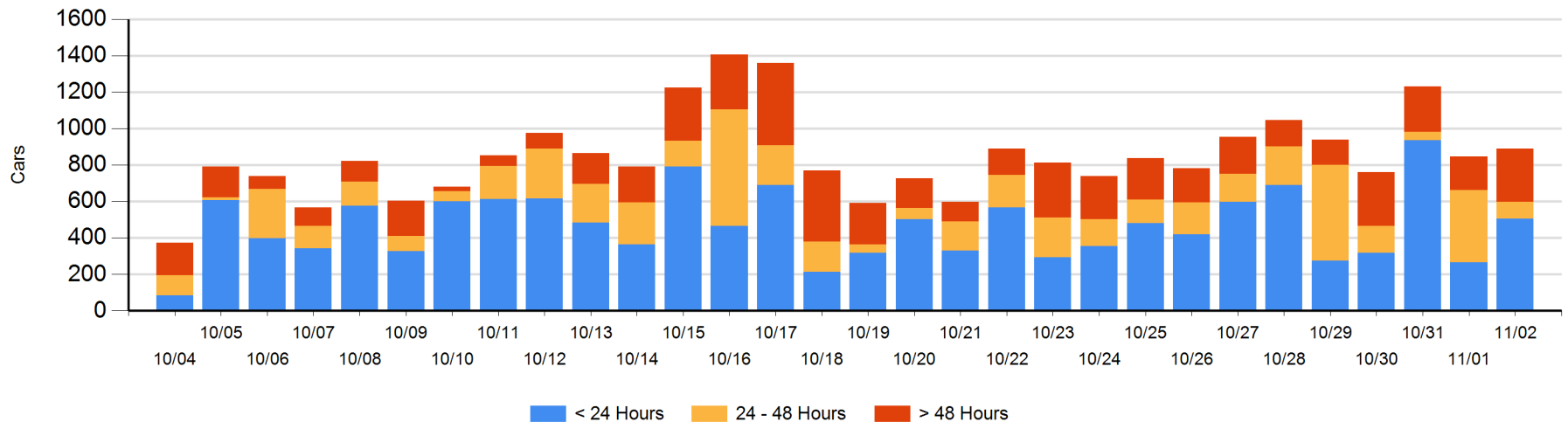
Today

	< 24 Hrs	24 - 48 Hrs	> 48-72 Hrs	> 72 Hrs	Total On Hand
CN	239	38	168	9	454
CP	266	56	62	51	435
SRY					0

Change in Last 24 Hours

	< 24 Hrs	24-48 Hrs	48 - 72 Hrs	> 72 Hrs
CN	59	-138	160	-1
CP	180	-164	55	-109
SRY				

Loaded Cars on Hand Vancouver Waiting for Placement - Last 30 Days All Railways



Port Terminal Status

Prince Rupert

Daily Activity for 11/2/2017

	Cars Arrived	Cars Received in Interchange	Cars Delivered in Interchange	Cars Placed for Unloading	Loads on Wheels at Destination As of 11/2/2017
CN	152		1	177	73

Port Unloads

	11/02	11/01	Week To Date	Last Week
CN	197	248	945	1,002

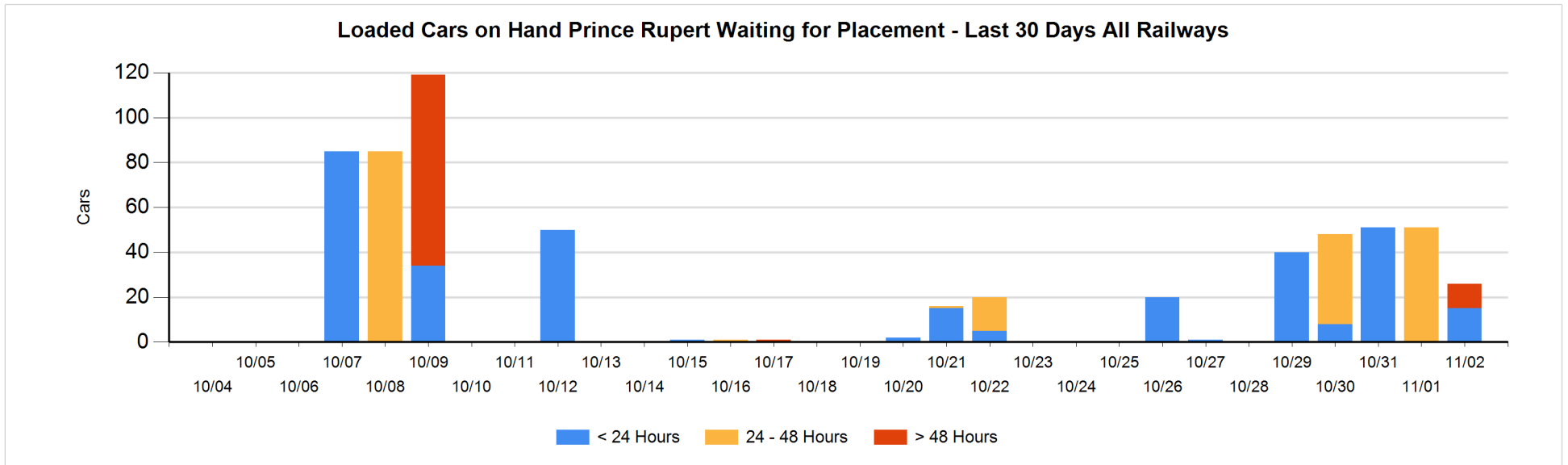
Age Profile of Loaded Cars Waiting Placement for Unloading

Today

	< 24 Hrs	24 - 48 Hrs	> 48-72 Hrs	> 72 Hrs	Total On Hand
CN	15		11		26

Change in Last 24 Hours

	< 24 Hrs	24-48 Hrs	48 - 72 Hrs	> 72 Hrs
CN	15	-51	11	



Port Terminal Status

Thunder Bay

Daily Activity for 11/2/2017

	Cars Arrived	Cars Received in Interchange	Cars Delivered in Interchange	Cars Placed for Unloading	Loads on Wheels at Destination As of 11/2/2017
CN	35			51	82
CP	242			244	343

Port Unloads

	11/02	11/01	Week To Date	Last Week
CN	130	162	462	639
CP	264	197	951	1,140

Age Profile of Loaded Cars Waiting Placement for Unloading

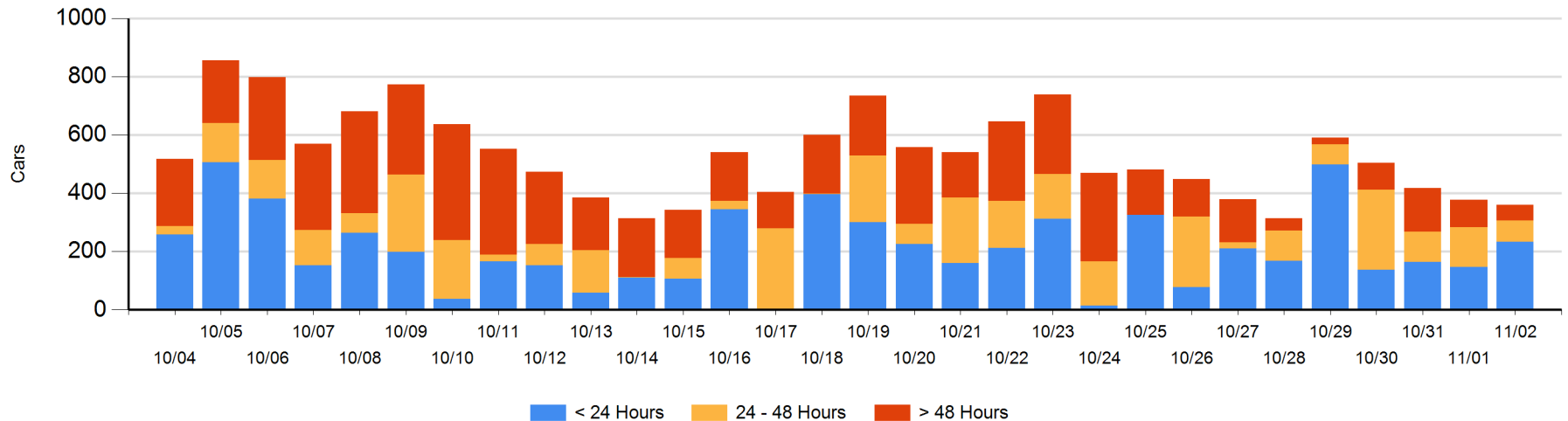
Today

	< 24 Hrs	24 - 48 Hrs	> 48-72 Hrs	> 72 Hrs	Total On Hand
CN	11		18	10	39
CP	222	73	12	14	321

Change in Last 24 Hours

	< 24 Hrs	24-48 Hrs	48 - 72 Hrs	> 72 Hrs
CN	11	-18	-9	0
CP	75	-46	-43	12

Loaded Cars on Hand Thunder Bay Waiting for Placement - Last 30 Days All Railways



Measurement Definitions

Loads on Wheels	<p>Count of loaded rail cars including all rail cars that have been released loaded at origin and have not been reported by the railway as unloaded at destination.</p> <p>Counts include all rail cars (hopper cars and boxcars) moving within a pipeline.</p>
Loads Not Moving	<p>Loaded rail cars for which the railways have not reported a movement event for 48 hours or more whether the rail car is at origin, enroute or at destination.</p>
Port Unloads	<p>Count of rail cars reported by railways as unloaded at the western port destinations of Vancouver, Prince Rupert and Thunder Bay.</p> <p>Unload counts include all rail cars (hopper cars and boxcars) unloaded by all receivers including major port terminals, transloaders and other receivers.</p>
Cars Arrived	<p>Count of rail cars reported as arrived at the destination railway terminal.</p>
Cars Received in Interchange	<p>Count of rail cars received in interchange by each railway within a destination railway terminal. Interchange activity is tracked for the Vancouver and Thunder Bay pipelines as applicable.</p>
Cars Delivered in Interchange	<p>Count of rail cars delivered in interchange by each railway within a destination railway terminal. Interchange activity is tracked for the Vancouver and Thunder Bay pipelines as applicable.</p>
Cars Placed for Unloading	<p>Count of rail cars reported by the railways as placed loaded at the receiver's facility for unloading.</p>
Loads on Wheels at Destination	<p>Count of rail cars that remain under load within the destination railway terminal including rail cars that have been reported as placed for unloading but not yet reported as unloaded.</p>
Waiting Placement for Unloading	<p>Count of rail cars that have been reported as arrived at the destination railway terminal but not reported as placed for unloading by the railway.</p> <p>For the Ports of Vancouver, Prince Rupert and Thunder Bay the count of rail cars waiting placement for unloading is categorized by age – i.e. the elapsed time from arrival at destination to the current report date.</p>