

Loads on Wheels

- System wide loads on wheels increased in the prior 24 hours following four consecutive days of decline and are now nearing 10,500 - 3% below the trailing 30 day average
- In total loads on wheels increased by 541 cars reflecting an increase of 688 cars on CN offset by a decline of 143 cars on CP
- CN loads on wheels increased in all three western port corridors including Vancouver (397), Thunder Bay (203) and Prince Rupert (99). While Prince Rupert corridor loads on wheels have rebounded to near 1,300 they remain 20% lower than the 30 day trailing average.
- Vancouver now nearing 6,400 cars - the highest level in the prior 3 weeks - while Thunder Bay remains below 1,600 and Prince Rupert below 1,300

Loads Not Moving

- The count of loaded cars not moving for 48 hours increased by 373 cars on CN and CP lines in the prior 24 hours and remains above 2,300
- Counts increased on CN while decreasing for CP.
- CN
 - The count of cars not moving increased by 426 cars in total - loads on wheels now idle for 48 hours or more at 1,313
 - Counts increased in all corridors other than Thunder Bay with Prince Rupert (281) and Vancouver (124) accounting for 95% of the increase
 - CN continues to hold cars at origin locations with 952 (73%) of cars are dwelling at origin locations - including 469 destined to Vancouver and 454 destined to Prince Rupert
- CP
 - CP counts decreased marginally by a net of 53 cars with only a slight increase in loads on wheels in the Vancouver corridor offset by declines in all other corridors
 - As with CN, CP also continues to allow cars to dwell at origin locations with 848 (80%) cars dwelling at origin including 724 destined to Vancouver and 119 destined to Thunder Bay

Port Performance

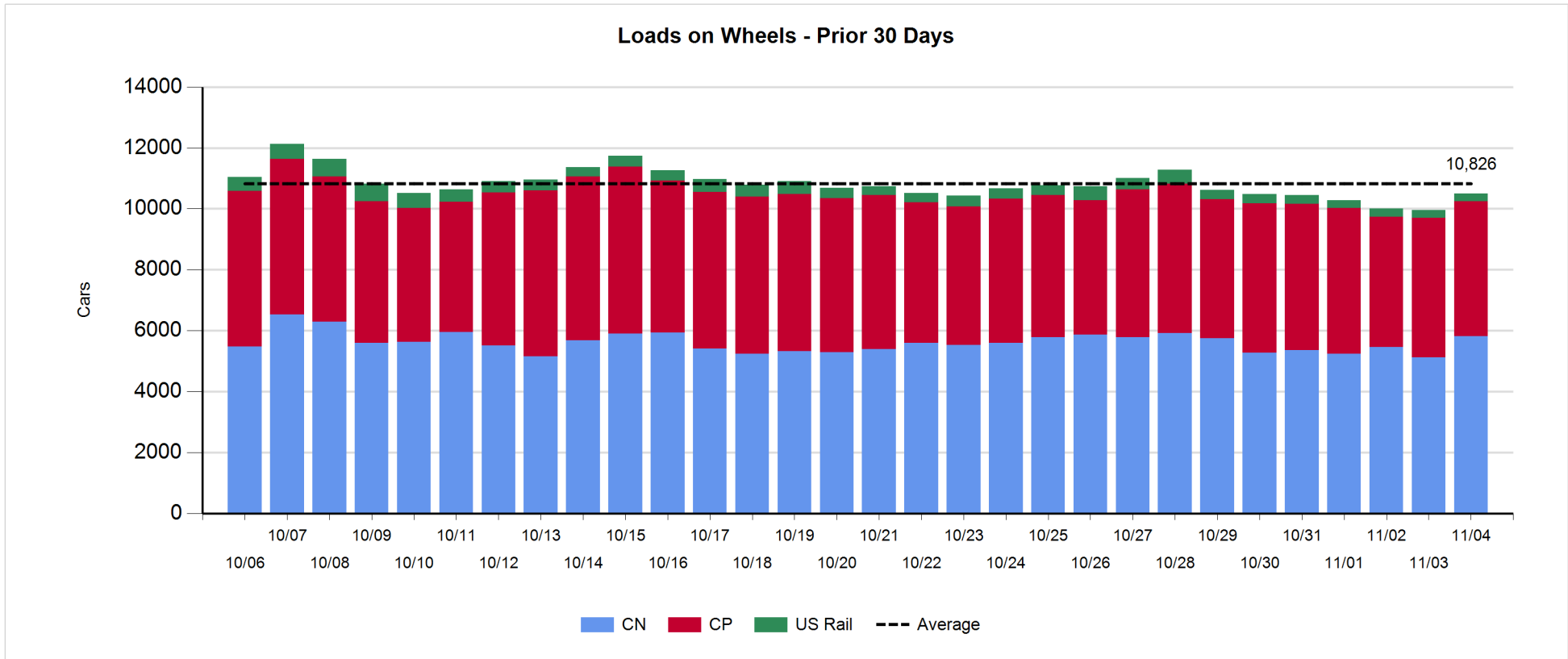
- CN and CP unloaded a total of 985 cars at the three western ports - through the first 6 days of Grain Week 14 west coast unloads are above 8,000 approximately 16% ahead of last week's pace. Assuming average Sunday unloading it is estimated that total week 14 unloads will be above 8,800 some 700 higher than the previous week.
- Vancouver
 - Total of 804 cars reported unloaded by CN and CP at the Port of Vancouver; CN - 316 and CP 488
 - There are currently less than 400 cars at Vancouver waiting placement for unloading
- Thunder Bay
 - 181 unloads at Thunder Bay - all CP
 - Cars at Thunder Bay waiting placement now below 300 with CP accounting for 83% of cars on hand.

Daily Loads on Wheels - 11/4/2017

	E Canada	Prince Rupert	Thunder Bay	USA/MEX	Vancouver	Total
CN	196	1,277	438	437	3,461	5,809
CP	136		1,092	284	2,923	4,435
Short Line	10				11	21
US Rail				227		227
	342	1,277	1,530	948	6,395	10,492

Change in Loads on Wheels - Prior 24 Hours

	E Canada	Prince Rupert	Thunder Bay	USA/MEX	Vancouver	Total
CN	-7	99	203	-4	397	688
CP	32	-1	-69	38	-143	-143
Short Line	0				-10	-10
US Rail				6		6
	25	98	134	40	244	541

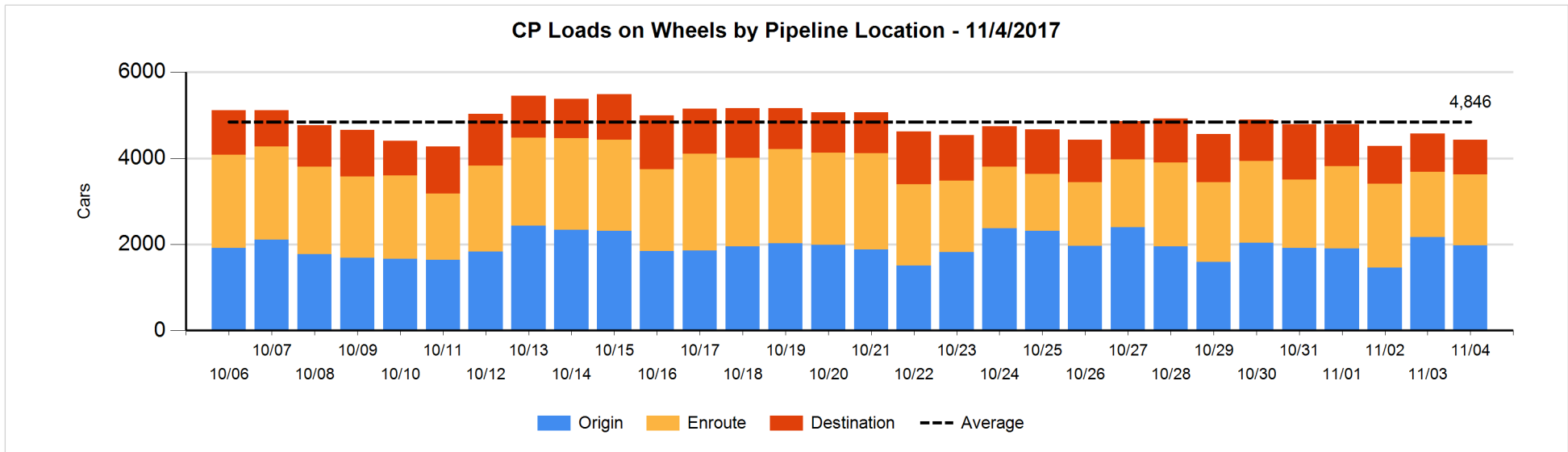
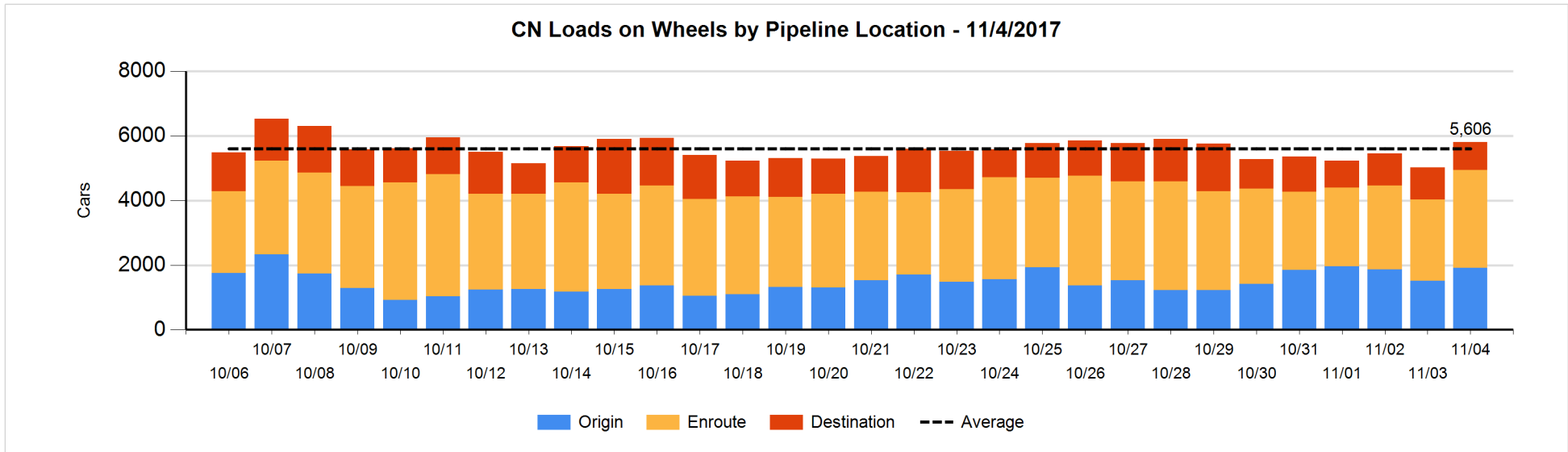


Daily Loads on Wheels By Pipeline Location - 11/4/2017

	E Canada	Prince Rupert	Thunder Bay	USA/MEX	Vancouver	Total
CN						
Origin	10	551	204	43	1,113	1,921
Enroute	115	640	130	392	1,746	3,023
Destination	71	86	104	2	602	865
	196	1,277	438	437	3,461	5,809
CP						
Origin	65		394	52	1,463	1,974
Enroute	70		401	179	998	1,648
Destination	1		297	53	461	812
	136		1,092	284	2,922	4,434
US Rail / Short Line						
Origin						
Enroute				185		185
Destination	10			42	11	63
	10			227	11	248

Change in Daily Loads on Wheels By Pipeline Location - Prior 24 Hours

	E Canada	Prince Rupert	Thunder Bay	USA/MEX	Vancouver	Total
CN						
Origin	-21	-16	143	0	299	405
Enroute	10	209	-14	0	305	510
Destination	4	0	74	-4	-201	-127
	-7	193	203	-4	403	788
CP						
Origin	18		-223	27	-16	-194
Enroute	14		225	15	-116	138
Destination	0	-1	-71	-4	-12	-88
	32	-1	-69	38	-144	-144
US Rail / Short Line						
Origin						
Enroute	-9			-16		-25
Destination	9			22	-10	21
	0			6	-10	-4

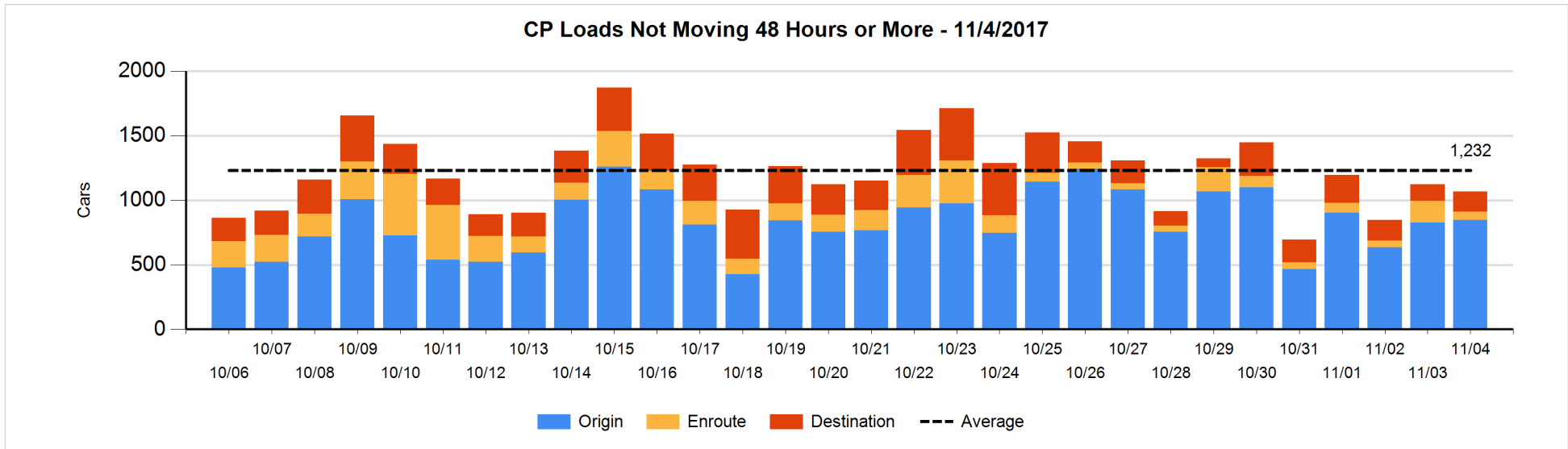
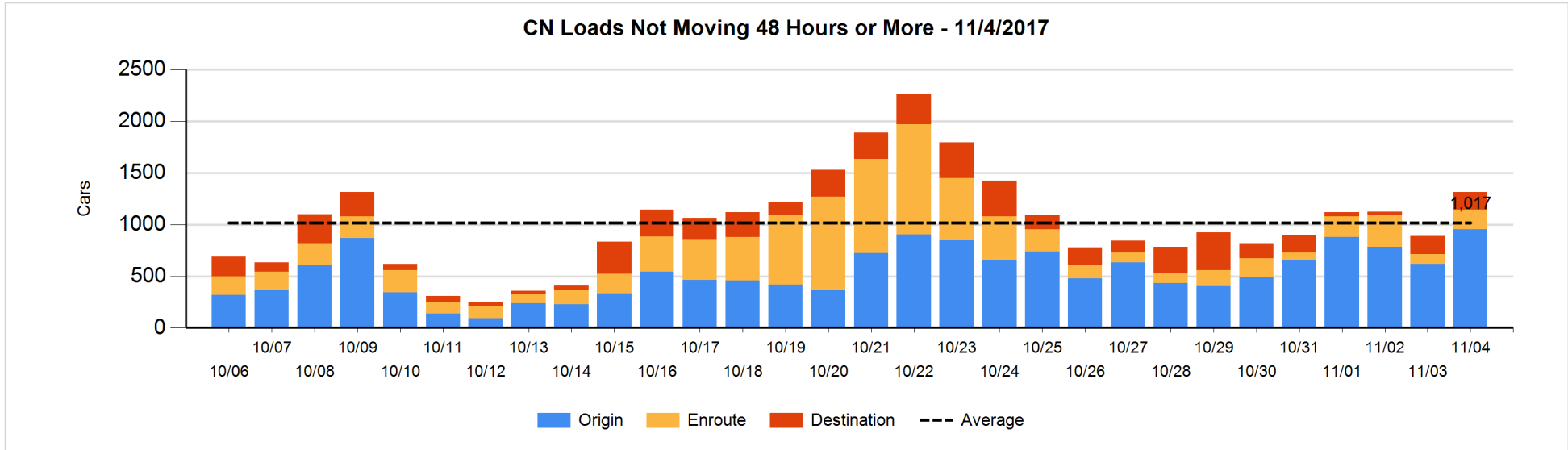


Loads Not Moving 48 Hours or More - 11/4/2017

	E Canada	Prince Rupert	Thunder Bay	USA/MEX	Vancouver	Total
CN						
Origin		454		29	469	952
Enroute	14	27	1	85	63	190
Destination	4	15	2		150	171
	18	496	3	114	682	1313
CP						
Origin	5		119		724	848
Enroute	14		3	22	26	65
Destination			84	4	68	156
	19		206	26	818	1069
US Rail / Short Line						
Origin						
Enroute				86		86
Destination				10	9	19
				96	9	105

Change in Loads Not Moving 48 Hours or More - 11/4/2017

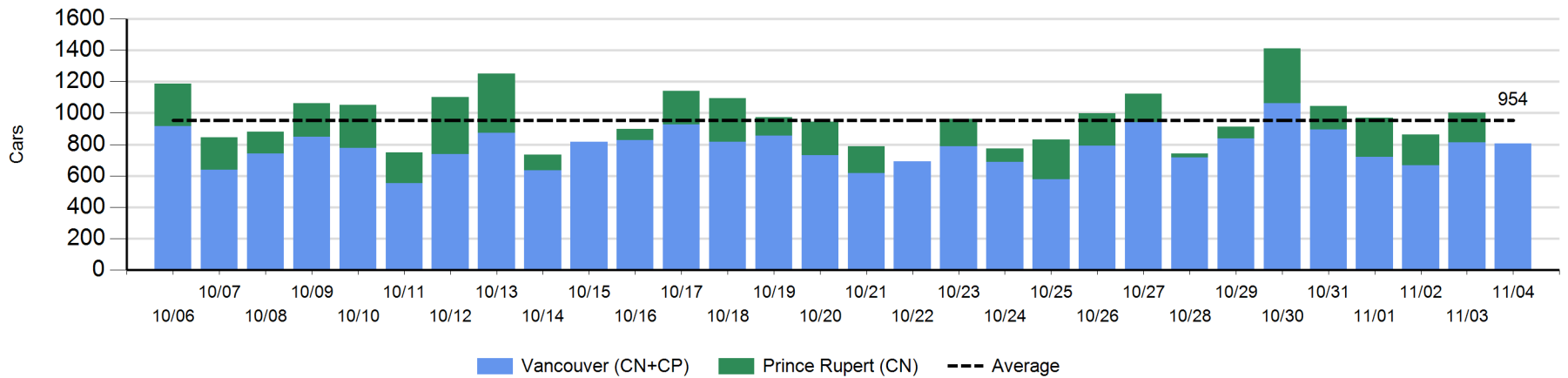
	E Canada	Prince Rupert	Thunder Bay	USA/MEX	Vancouver	Total
CN						
Origin	-1	251	-51	0	134	333
Enroute	2	16	0	74	4	96
Destination	-1	14	0	-2	-14	-3
	0	281	-51	72	124	426
CP						
Origin	-28		0		48	20
Enroute	2		-112	0	6	-104
Destination	-1		64	-4	-28	31
	-27		-48	-4	26	-53
US Rail / Short Line						
Origin						
Enroute				4		4
Destination				-4	5	1
				0	5	5



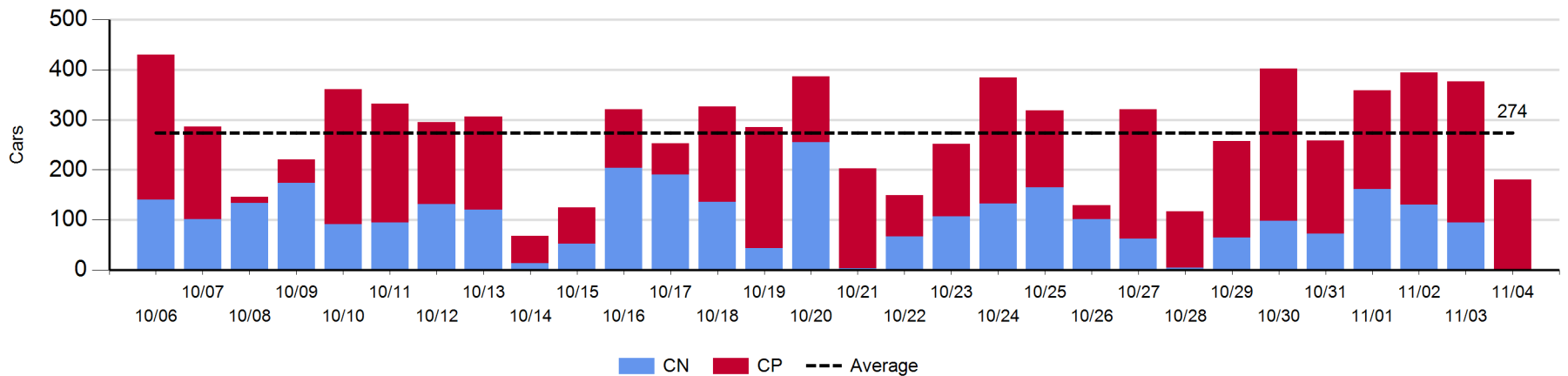
Port Unloads - 11/4/2017

	Prince Rupert	Vancouver	West Coast Total	Thunder Bay	Total
CN		316	316		316
CP		488	488	181	669
		804	804	181	985

West Coast Port Unloads - Prior 30 Days



Thunder Bay Port Unloads - Prior 30 Days



Port Terminal Status

Vancouver

Daily Activity for 11/4/2017

	Cars Arrived	Cars Received in Interchange	Cars Delivered in Interchange	Cars Placed for Unloading	Loads on Wheels at Destination As of 11/4/2017
CN	3	112		482	602
CP	478		112	613	461
SRY					11

Port Unloads

	11/04	11/03	Week To Date	Last Week
CN	316	479	2,632	2,728
CP	488	332	2,327	2,609
SRY	11	11	52	60

Age Profile of Loaded Cars Waiting Placement for Unloading

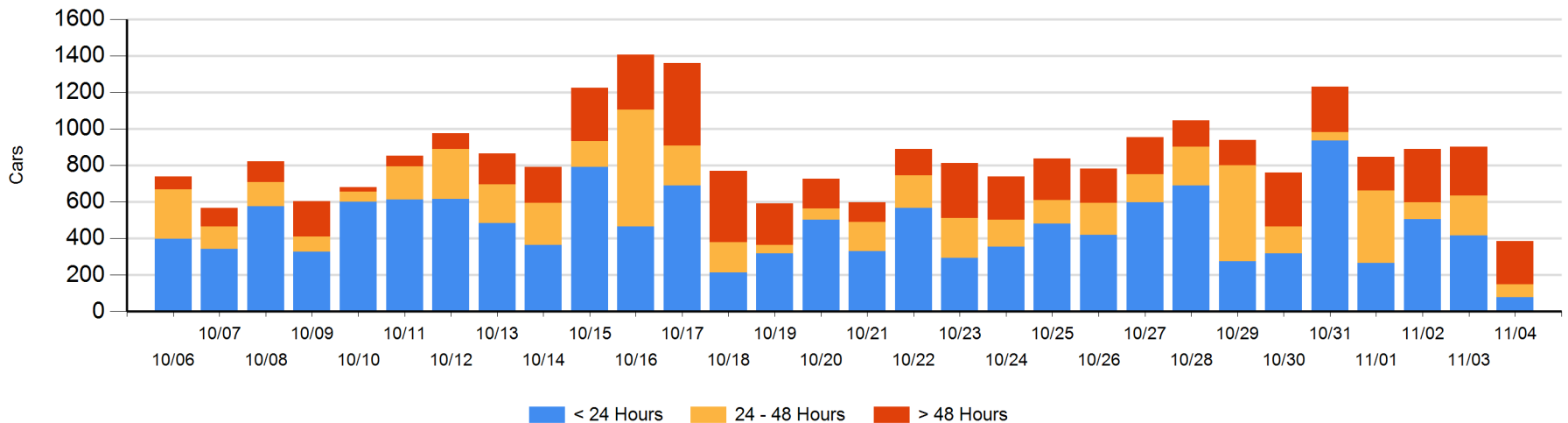
Today

	< 24 Hrs	24 - 48 Hrs	> 48-72 Hrs	> 72 Hrs	Total On Hand
CN	3	70	30	45	148
CP	74	2	74	87	237
SRY					0

Change in Last 24 Hours

	< 24 Hrs	24-48 Hrs	48 - 72 Hrs	> 72 Hrs
CN	-217	-9	7	-90
CP	-123	-138	18	35
SRY				

Loaded Cars on Hand Vancouver Waiting for Placement - Last 30 Days All Railways



Port Terminal Status

Prince Rupert

Daily Activity for 11/4/2017

Cars Arrived	Cars Received in Interchange	Cars Delivered in Interchange	Cars Placed for Unloading	Loads on Wheels at Destination As of 11/4/2017
				86
CN				

Port Unloads

	11/04	11/03	Week To Date	Last Week
CN		189	1,134	1,002

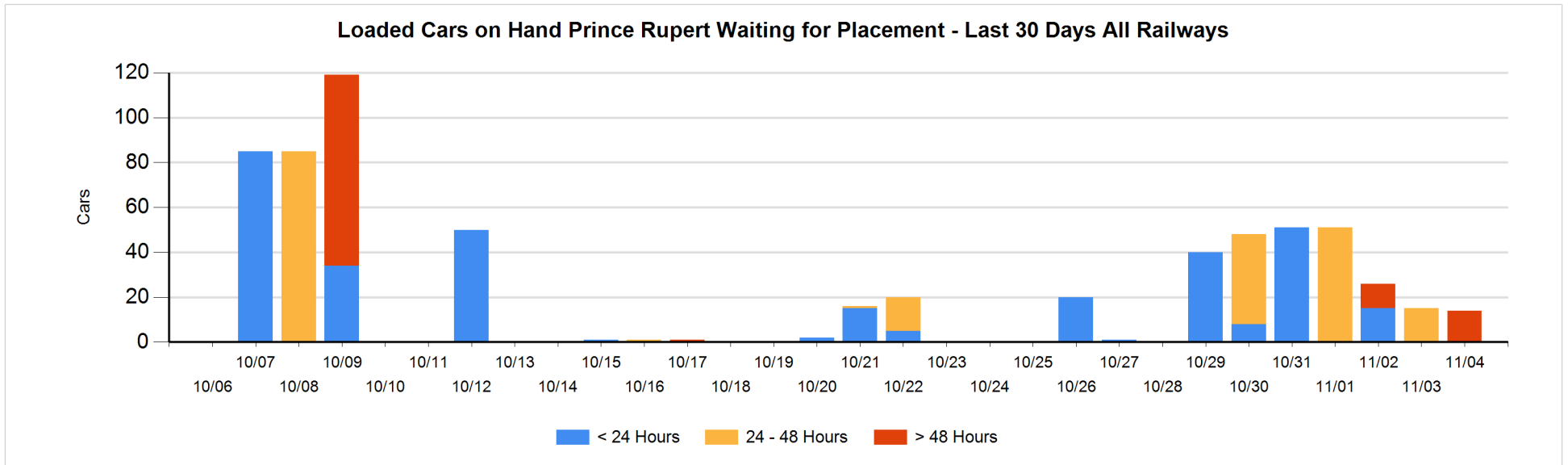
Age Profile of Loaded Cars Waiting Placement for Unloading

Today

	< 24 Hrs	24 - 48 Hrs	> 48-72 Hrs	> 72 Hrs	Total On Hand
CN			14		14

Change in Last 24 Hours

	< 24 Hrs	24-48 Hrs	48 - 72 Hrs	> 72 Hrs
CN		-15	14	



Port Terminal Status

Thunder Bay

Daily Activity for 11/4/2017

	Cars Arrived	Cars Received in Interchange	Cars Delivered in Interchange	Cars Placed for Unloading	Loads on Wheels at Destination As of 11/4/2017
CN	74			38	104
CP	110			203	297

Port Unloads

	11/04	11/03	Week To Date	Last Week
CN		95	557	639
CP	181	281	1,413	1,140

Age Profile of Loaded Cars Waiting Placement for Unloading

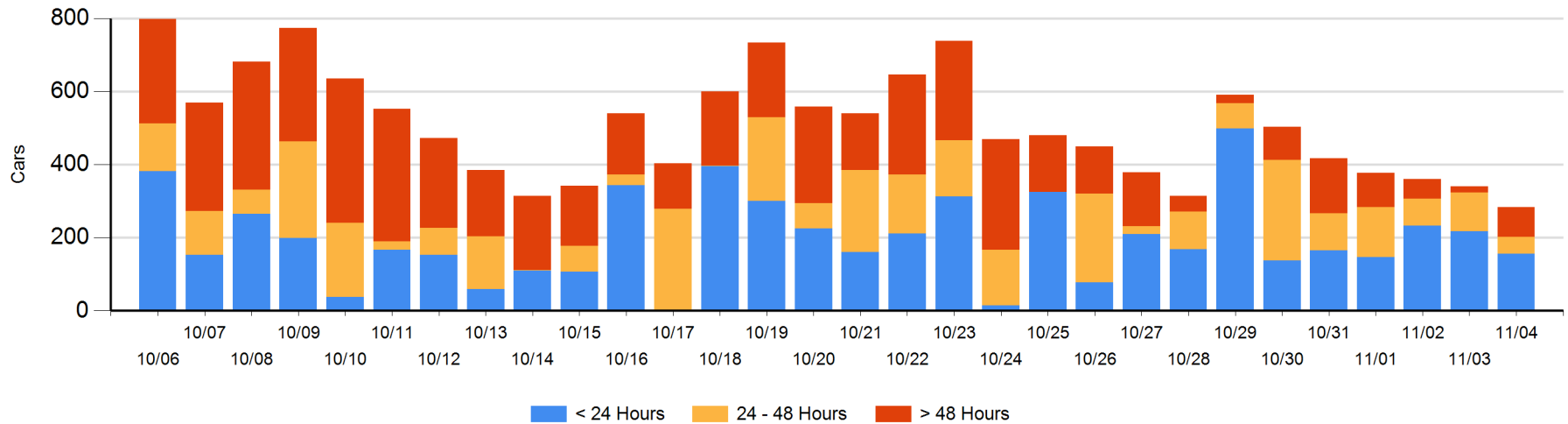
Today

	< 24 Hrs	24 - 48 Hrs	> 48-72 Hrs	> 72 Hrs	Total On Hand
CN	46				46
CP	110	46	64	18	238

Change in Last 24 Hours

	< 24 Hrs	24-48 Hrs	48 - 72 Hrs	> 72 Hrs
CN	36			
CP	-98	-59	56	8

Loaded Cars on Hand Thunder Bay Waiting for Placement - Last 30 Days All Railways



Measurement Definitions

Loads on Wheels	<p>Count of loaded rail cars including all rail cars that have been released loaded at origin and have not been reported by the railway as unloaded at destination.</p> <p>Counts include all rail cars (hopper cars and boxcars) moving within a pipeline.</p>
Loads Not Moving	<p>Loaded rail cars for which the railways have not reported a movement event for 48 hours or more whether the rail car is at origin, enroute or at destination.</p>
Port Unloads	<p>Count of rail cars reported by railways as unloaded at the western port destinations of Vancouver, Prince Rupert and Thunder Bay.</p> <p>Unload counts include all rail cars (hopper cars and boxcars) unloaded by all receivers including major port terminals, transloaders and other receivers.</p>
Cars Arrived	<p>Count of rail cars reported as arrived at the destination railway terminal.</p>
Cars Received in Interchange	<p>Count of rail cars received in interchange by each railway within a destination railway terminal. Interchange activity is tracked for the Vancouver and Thunder Bay pipelines as applicable.</p>
Cars Delivered in Interchange	<p>Count of rail cars delivered in interchange by each railway within a destination railway terminal. Interchange activity is tracked for the Vancouver and Thunder Bay pipelines as applicable.</p>
Cars Placed for Unloading	<p>Count of rail cars reported by the railways as placed loaded at the receiver's facility for unloading.</p>
Loads on Wheels at Destination	<p>Count of rail cars that remain under load within the destination railway terminal including rail cars that have been reported as placed for unloading but not yet reported as unloaded.</p>
Waiting Placement for Unloading	<p>Count of rail cars that have been reported as arrived at the destination railway terminal but not reported as placed for unloading by the railway.</p> <p>For the Ports of Vancouver, Prince Rupert and Thunder Bay the count of rail cars waiting placement for unloading is categorized by age – i.e. the elapsed time from arrival at destination to the current report date.</p>