

Loads on Wheels

- System wide loads on wheels declined for the 7th time in the prior 8 days and now sit at 10,121 - 6% below the trailing 30 day average
- In total loads on wheels decreased by 371 cars reflecting a nominal decline in CN cars (-25) and a more significant decline in CP volumes (-358)
- CN loads on wheels were lower in all corridors other than Prince Rupert which saw an increase of 143 cars while Vancouver and Thunder Bay saw nominal declines. CP saw the most significant decline in the Vancouver corridor (-333)
- Vancouver now at 5,958 - falling below 6,000 cars for the first time in the prior 12 days; CP volumes in the Vancouver corridor (2,590) are at their lowest level in the prior 30 days and 23% lower than the trailing 30 day average

Loads Not Moving

- The count of loaded cars not moving for 48 hours decreased by 282 cars on CN and CP lines in the prior 24 hours and now sits at 2,100
- Counts decreased for both CN and CP with the majority of the decline accounted for by a reduced number of cars dwelling at origin for both railways.
- CN
 - The count of cars not moving decreased by 181 cars in total - loads on wheels now idle for 48 hours or more at 1,132
 - Counts decreased in both the Vancouver (-127) and Prince Rupert (-78) corridors with little change elsewhere
 - While the majority of cars continue to dwell at origin (53%) this is down considerably from the 70-80% that has been seen in recent weeks
- CP
 - CP counts decreased by 101 cars in total split between Vancouver and Thunder Bay offset by an increase in cars dwelling in the US / Mexico corridor
 - The majority of cars dwelling continues to be at origin with 724 cars dwelling at origin (75%) and more than 650 of these destined to Vancouver

Port Performance

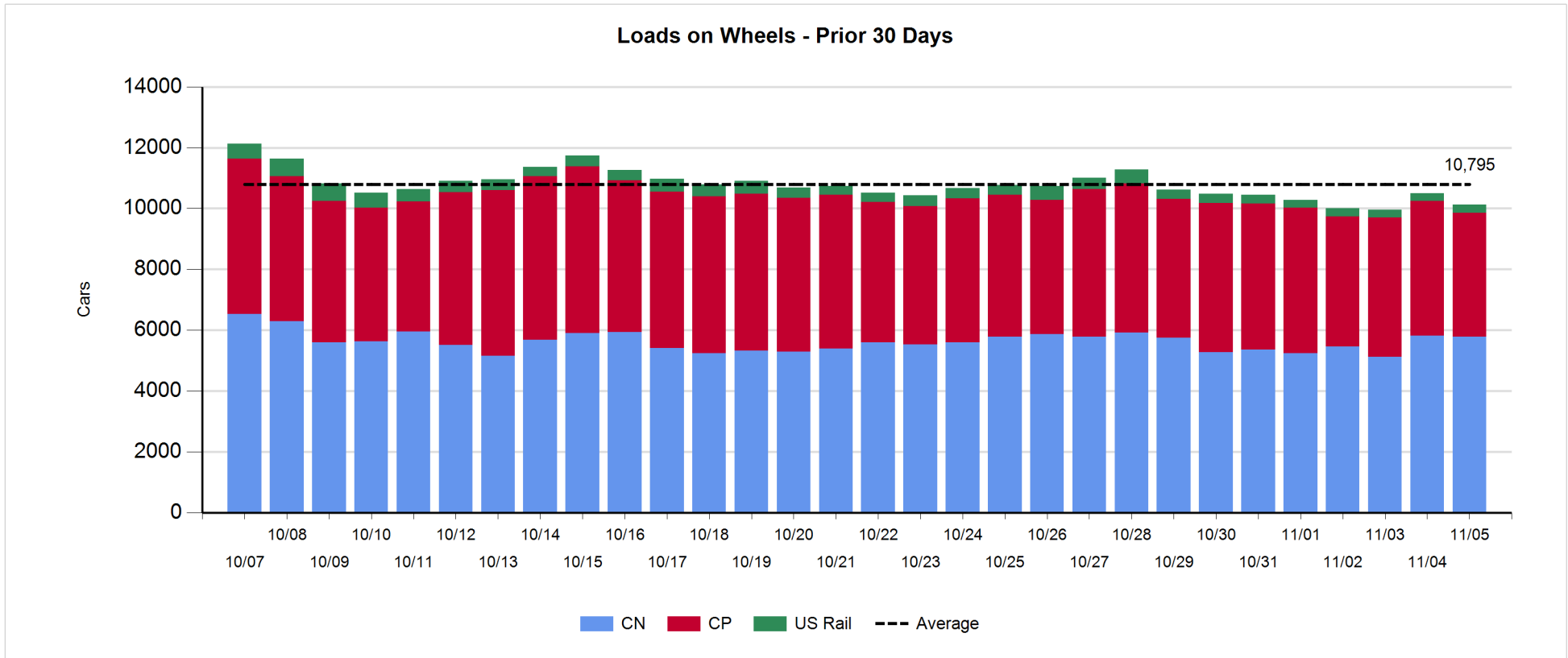
- CN and CP unloaded a total of 916 cars at the three western ports - week 14 unloads total 9,031 - 850 or 10% more than the prior week.
- Vancouver
 - Total of 772 cars reported unloaded by CN and CP at the Port of Vancouver; CN - 408 and CP 364
 - There are currently 691 cars at Vancouver waiting placement for unloading
- Thunder Bay
 - 144 unloads at Thunder Bay
 - Cars at Thunder Bay waiting placement now at 417 with CP accounting for 92% of cars on hand.

Daily Loads on Wheels - 11/5/2017

	E Canada	Prince Rupert	Thunder Bay	USA/MEX	Vancouver	Total
CN	189	1,420	393	425	3,357	5,784
CP	136		1,102	249	2,590	4,077
Short Line	10				11	21
US Rail				239		239
	335	1,420	1,495	913	5,958	10,121

Change in Loads on Wheels - Prior 24 Hours

	E Canada	Prince Rupert	Thunder Bay	USA/MEX	Vancouver	Total
CN	-7	143	-45	-12	-104	-25
CP	0		10	-35	-333	-358
Short Line	0				0	0
US Rail				12		12
	-7	143	-35	-35	-437	-371

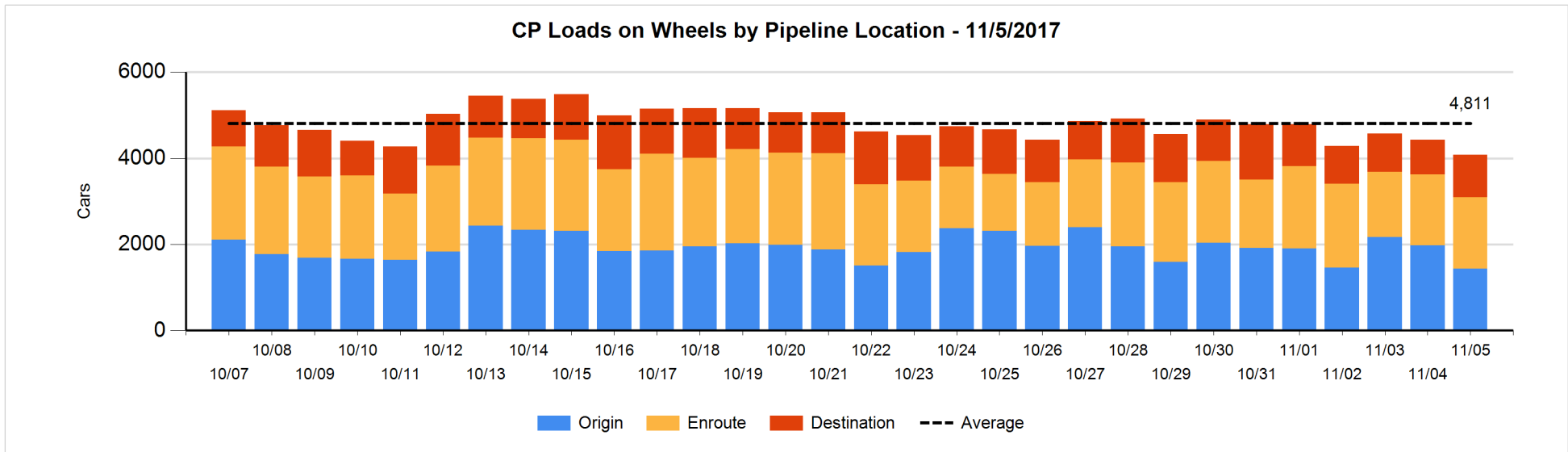
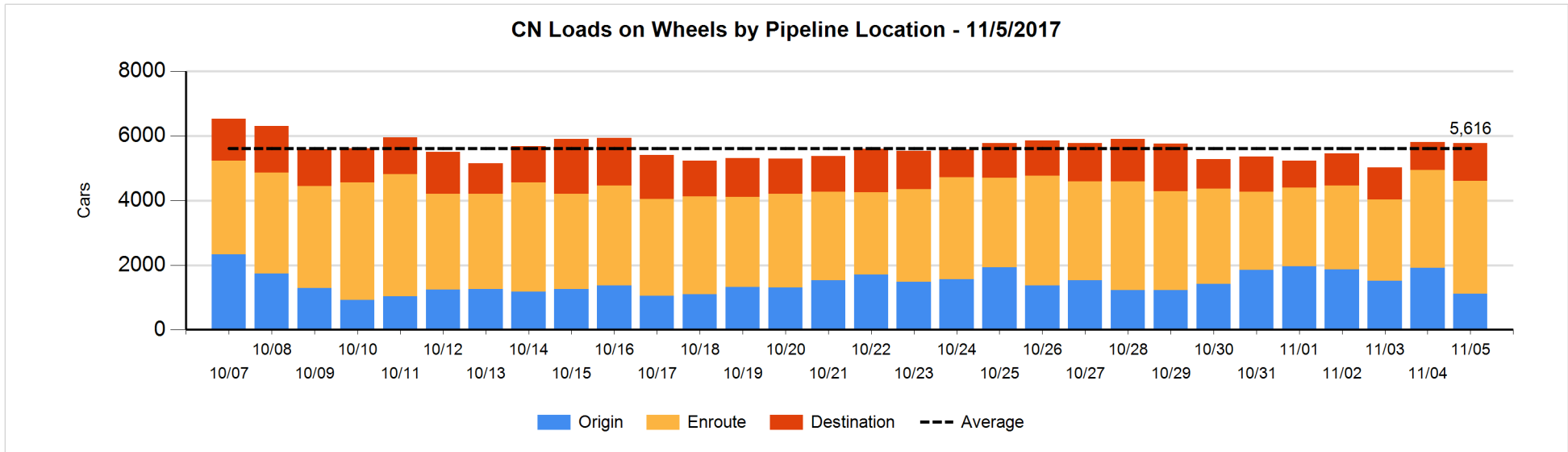


Daily Loads on Wheels By Pipeline Location - 11/5/2017

	E Canada	Prince Rupert	Thunder Bay	USA/MEX	Vancouver	Total
CN						
Origin	6	392	1	11	708	1,118
Enroute	114	739	289	412	1,939	3,493
Destination	69	289	103	2	710	1,173
	189	1,420	393	425	3,357	5,784
CP						
Origin	51		58	52	1,275	1,436
Enroute	83		591	144	841	1,659
Destination	2		453	53	473	981
	136		1,102	249	2,589	4,076
US Rail / Short Line						
Origin						
Enroute				185		185
Destination	10			54	11	75
	10			239	11	260

Change in Daily Loads on Wheels By Pipeline Location - Prior 24 Hours

	E Canada	Prince Rupert	Thunder Bay	USA/MEX	Vancouver	Total
CN						
Origin	-4	-159	-203	-32	-405	-803
Enroute	-1	99	159	20	193	470
Destination	-2	203	-1	0	108	308
	-7	143	-45	-12	-104	-25
CP						
Origin	-14		-336	0	-188	-538
Enroute	13		190	-35	-157	11
Destination	1		156	0	12	169
	0		10	-35	-333	-358
US Rail / Short Line						
Origin						
Enroute				0		0
Destination	0			12	0	12
	0			12	0	12

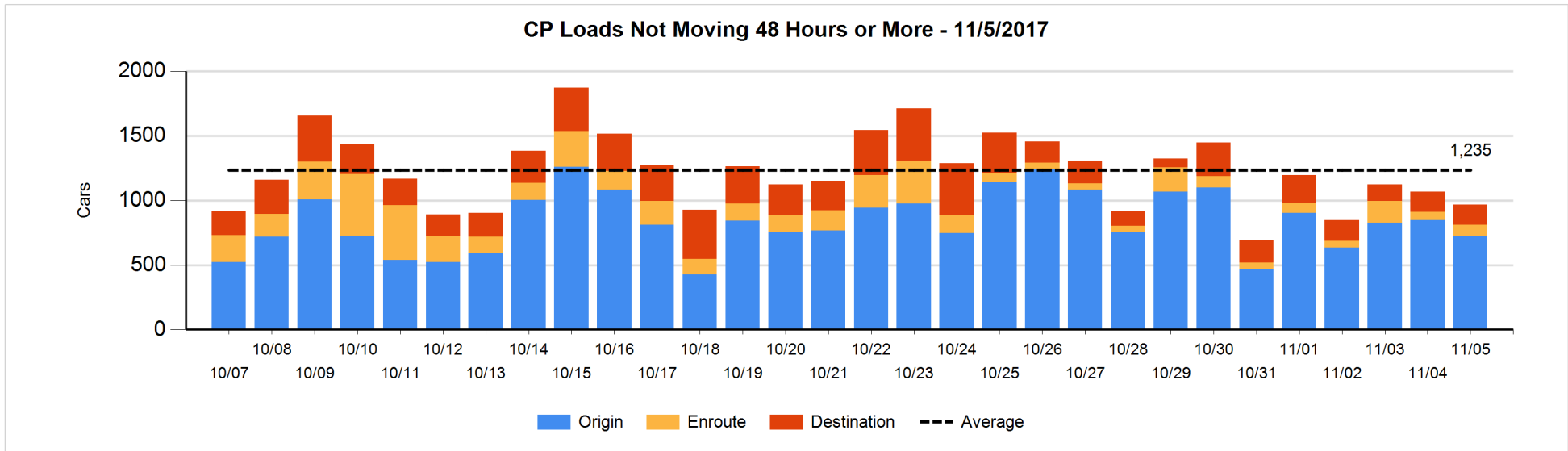
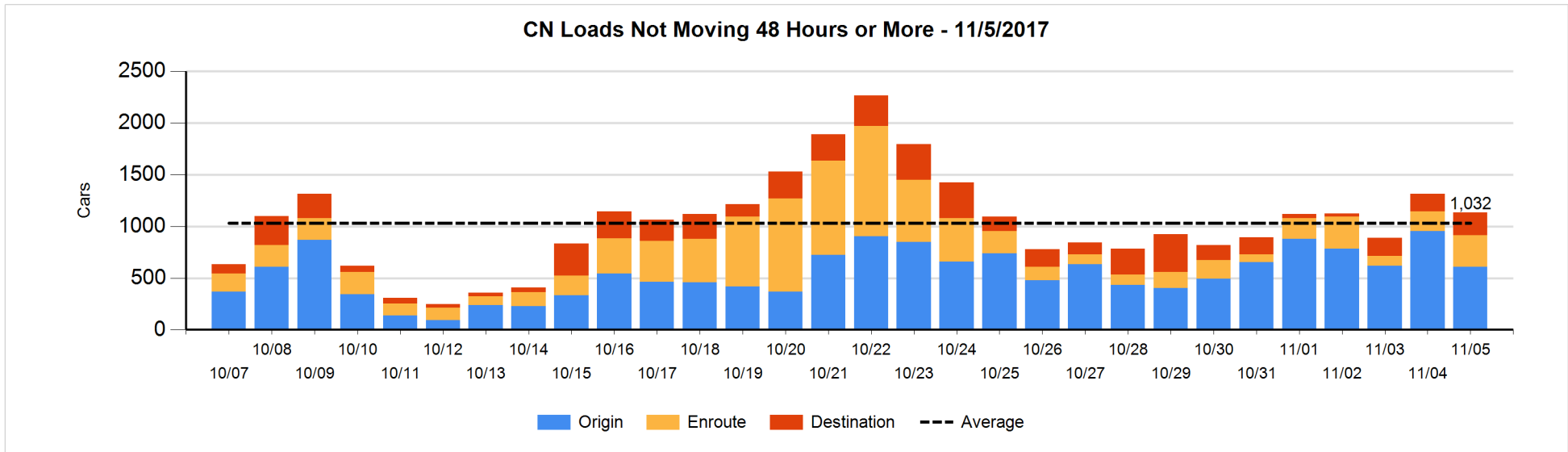


Loads Not Moving 48 Hours or More - 11/5/2017

	E Canada	Prince Rupert	Thunder Bay	USA/MEX	Vancouver	Total
CN						
Origin	4	254	1	11	339	609
Enroute	8	78	1	124	96	307
Destination	6	86	2	2	120	216
	18	418	4	137	555	1132
CP						
Origin	5		58		661	724
Enroute	14		3	44	27	88
Destination			47	53	56	156
	19		108	97	744	968
US Rail / Short Line						
Origin						
Enroute				86		86
Destination	1			13	7	21
	1			99	7	107

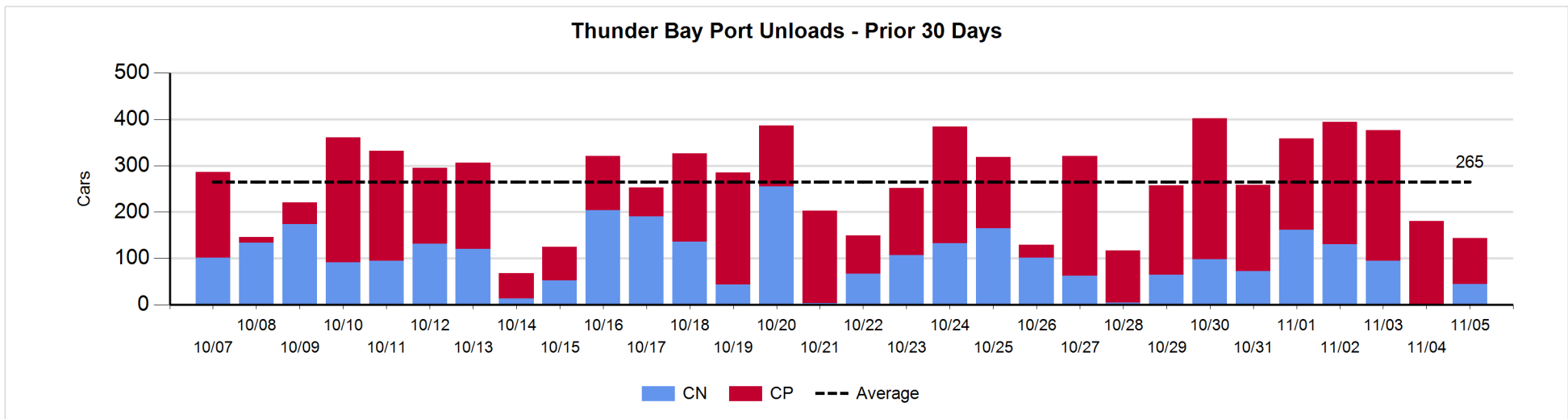
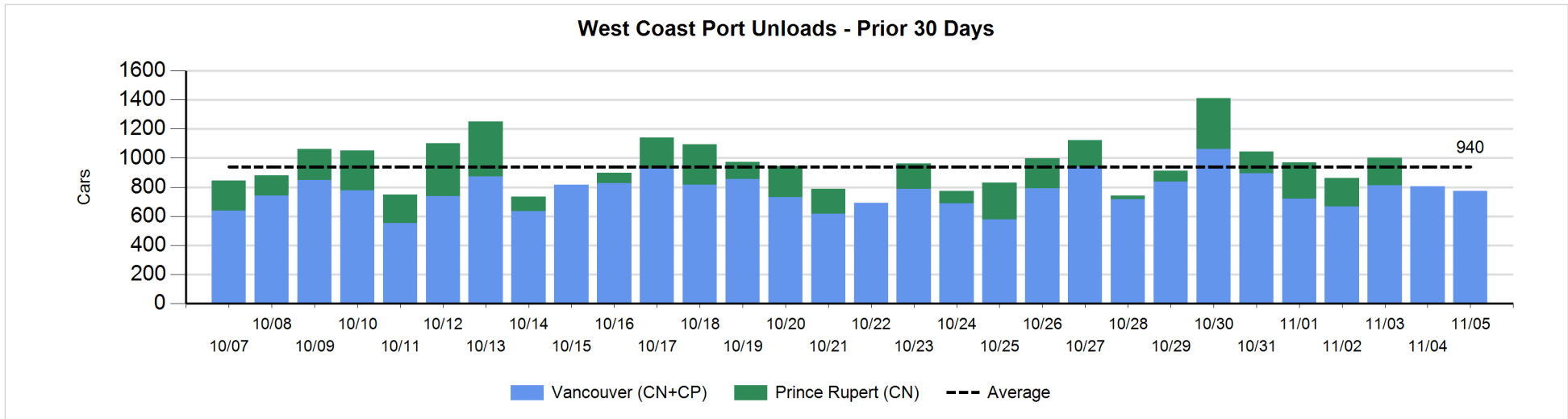
Change in Loads Not Moving 48 Hours or More - 11/5/2017

	E Canada	Prince Rupert	Thunder Bay	USA/MEX	Vancouver	Total
CN						
Origin	4	-200	1	-18	-130	-343
Enroute	-6	51	0	39	33	117
Destination	2	71	0	2	-30	45
	0	-78	1	23	-127	-181
CP						
Origin	0		-61		-63	-124
Enroute	0		0	22	1	23
Destination			-37	49	-12	0
	0		-98	71	-74	-101
US Rail / Short Line						
Origin						
Enroute				0		0
Destination	1			3	-2	2
	1			3	-2	2



Port Unloads - 11/5/2017

	Prince Rupert	Vancouver	West Coast Total	Thunder Bay	Total
CN		408	408	45	453
CP		364	364	99	463
		772	772	144	916



Port Terminal Status

Vancouver

Daily Activity for 11/5/2017

	Cars Arrived	Cars Received in Interchange	Cars Delivered in Interchange	Cars Placed for Unloading	Loads on Wheels at Destination As of 11/5/2017
CN	386	128	4	437	710
CP	506		133	161	473
SRY		9			11

Port Unloads

	11/05	11/04	Week To Date	Last Week
CN	408	316	3,040	2,728
CP	364	488	2,691	2,609
SRY		11	52	60

Age Profile of Loaded Cars Waiting Placement for Unloading

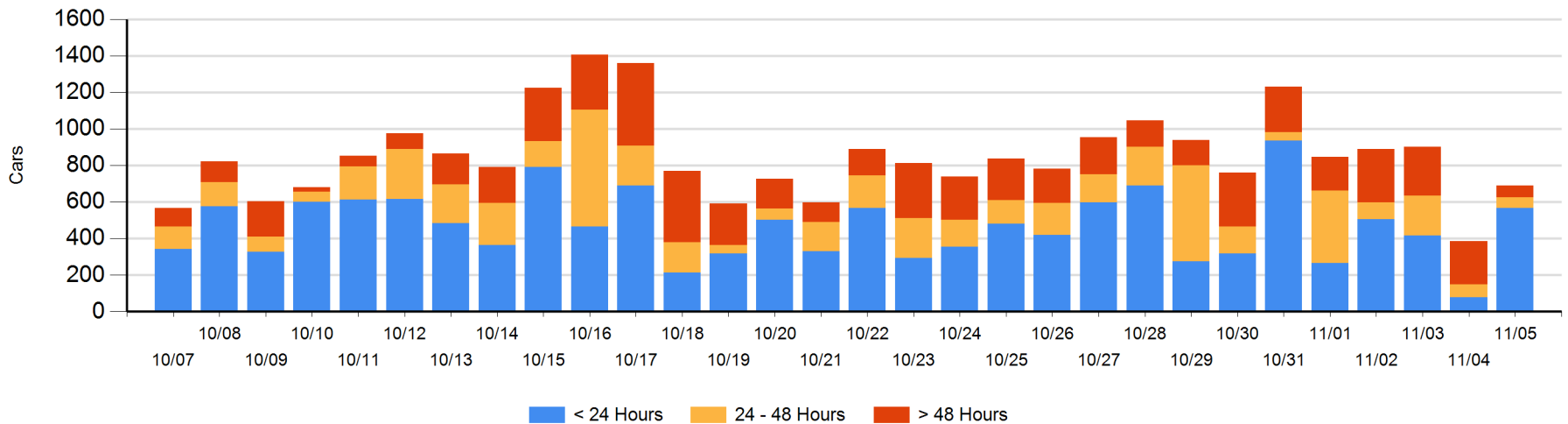
Today

	< 24 Hrs	24 - 48 Hrs	> 48-72 Hrs	> 72 Hrs	Total On Hand
CN	207			5	212
CP	360	59	2	58	479
SRY					0

Change in Last 24 Hours

	< 24 Hrs	24-48 Hrs	48 - 72 Hrs	> 72 Hrs
CN	204	-70	-30	-40
CP	286	57	-72	-29
SRY				

Loaded Cars on Hand Vancouver Waiting for Placement - Last 30 Days All Railways



Port Terminal Status

Prince Rupert

Daily Activity for 11/5/2017

	Cars Arrived	Cars Received in Interchange	Cars Delivered in Interchange	Cars Placed for Unloading	Loads on Wheels at Destination As of 11/5/2017
CN	203			203	289

Port Unloads

	11/05	11/04	Week To Date	Last Week
CN			1,134	1,002

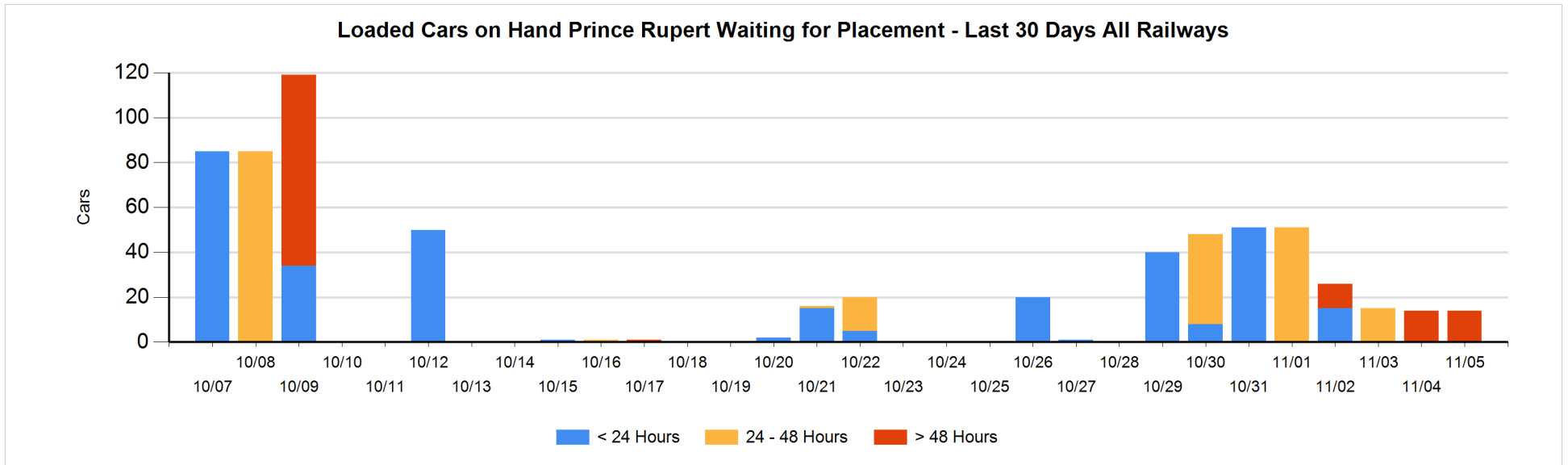
Age Profile of Loaded Cars Waiting Placement for Unloading

Today

	< 24 Hrs	24 - 48 Hrs	> 48-72 Hrs	> 72 Hrs	Total On Hand
CN				14	14

Change in Last 24 Hours

	< 24 Hrs	24-48 Hrs	48 - 72 Hrs	> 72 Hrs
CN			-14	14



Port Terminal Status

Thunder Bay

Daily Activity for 11/5/2017

	Cars Arrived	Cars Received in Interchange	Cars Delivered in Interchange	Cars Placed for Unloading	Loads on Wheels at Destination As of 11/5/2017
CN	43			54	103
CP	255			111	453

Port Unloads

	11/05	11/04	Week To Date	Last Week
CN	45		602	639
CP	99	181	1,512	1,140

Age Profile of Loaded Cars Waiting Placement for Unloading

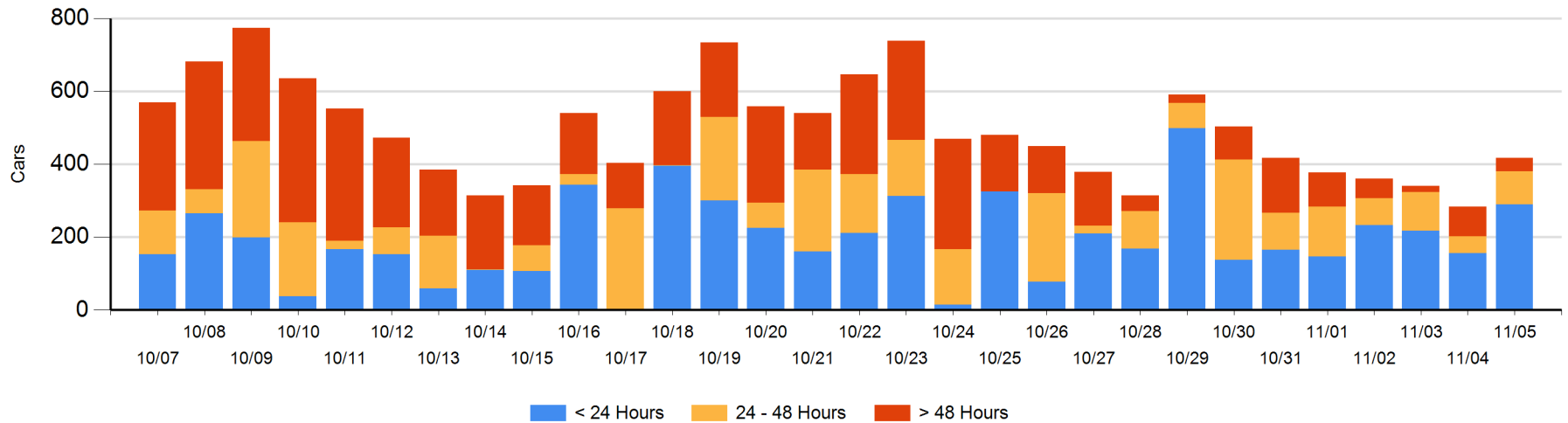
Today

	< 24 Hrs	24 - 48 Hrs	> 48-72 Hrs	> 72 Hrs	Total On Hand
CN	35				35
CP	255	91	22	14	382

Change in Last 24 Hours

	< 24 Hrs	24-48 Hrs	48 - 72 Hrs	> 72 Hrs
CN	-11			
CP	145	45	-42	-4

Loaded Cars on Hand Thunder Bay Waiting for Placement - Last 30 Days All Railways



Measurement Definitions

Loads on Wheels	<p>Count of loaded rail cars including all rail cars that have been released loaded at origin and have not been reported by the railway as unloaded at destination.</p> <p>Counts include all rail cars (hopper cars and boxcars) moving within a pipeline.</p>
Loads Not Moving	<p>Loaded rail cars for which the railways have not reported a movement event for 48 hours or more whether the rail car is at origin, enroute or at destination.</p>
Port Unloads	<p>Count of rail cars reported by railways as unloaded at the western port destinations of Vancouver, Prince Rupert and Thunder Bay.</p> <p>Unload counts include all rail cars (hopper cars and boxcars) unloaded by all receivers including major port terminals, transloaders and other receivers.</p>
Cars Arrived	<p>Count of rail cars reported as arrived at the destination railway terminal.</p>
Cars Received in Interchange	<p>Count of rail cars received in interchange by each railway within a destination railway terminal. Interchange activity is tracked for the Vancouver and Thunder Bay pipelines as applicable.</p>
Cars Delivered in Interchange	<p>Count of rail cars delivered in interchange by each railway within a destination railway terminal. Interchange activity is tracked for the Vancouver and Thunder Bay pipelines as applicable.</p>
Cars Placed for Unloading	<p>Count of rail cars reported by the railways as placed loaded at the receiver's facility for unloading.</p>
Loads on Wheels at Destination	<p>Count of rail cars that remain under load within the destination railway terminal including rail cars that have been reported as placed for unloading but not yet reported as unloaded.</p>
Waiting Placement for Unloading	<p>Count of rail cars that have been reported as arrived at the destination railway terminal but not reported as placed for unloading by the railway.</p> <p>For the Ports of Vancouver, Prince Rupert and Thunder Bay the count of rail cars waiting placement for unloading is categorized by age – i.e. the elapsed time from arrival at destination to the current report date.</p>