

Loads on Wheels

- System wide loads on wheels decreased in the prior 24 hours and now sit at 10,007 - 6% below the trailing 30 day average
- In total loads on wheels declined by 420 cars reflecting decreases on both CN (-281) and CP (-99)
- CN loads on wheels declined primarily in the Vancouver corridor (-293) and now sit below 3,000 for the first time in the prior 5 days. CP volumes decreased primarily in the Thunder Bay corridor (-145) offset somewhat by nominal increases in the Eastern Canada and US corridors.
- Vancouver now at 5,770 - the lowest level in the prior 28 days, Prince Rupert at 1,541 and Thunder Bay at 1,303 - lowest level in the prior 30 days; Vancouver and Thunder Bay volumes are being impacted to some extent by CN rationing of more than 450 orders in the Thunder Bay corridor and 690 orders in the Vancouver corridor in weeks 14 and 15.

Loads Not Moving

- The count of loaded cars not moving for 48 hours decreased by 269 cars; total cars on CN and CP not moving for 48 hours or more now at 1,737 - the lowest level in the prior 7 days
- The majority of cars continue to dwell at origin for both railways
- CN
 - The count of cars not moving declined by 290 cars on a net basis - loads on wheels now idle for 48 hours or more at 839
 - Counts declined in all corridors - principally to all western port locations; Vancouver (546) and Prince Rupert (177) continue to account for the majority of idle traffic
 - More than 60% of cars are dwelling at origin locations
- CP
 - CP counts increased nominally - 30 cars in total - with little change in any individual corridor
 - More than 75% of cars dwelling at origin with more than 550 destined to Vancouver

Port Performance

- CN and CP unloaded a total of 953 cars at the three western ports
- Vancouver
 - Total of 800 cars reported unloaded by CN and CP at the Port of Vancouver; CN - 377 and CP - 423
 - There are currently 689 cars at Vancouver waiting placement for unloading split roughly equally between CN and CP
- Thunder Bay
 - 299 unloads at Thunder Bay
 - Cars at Thunder Bay waiting placement now at 483 - two thirds CP

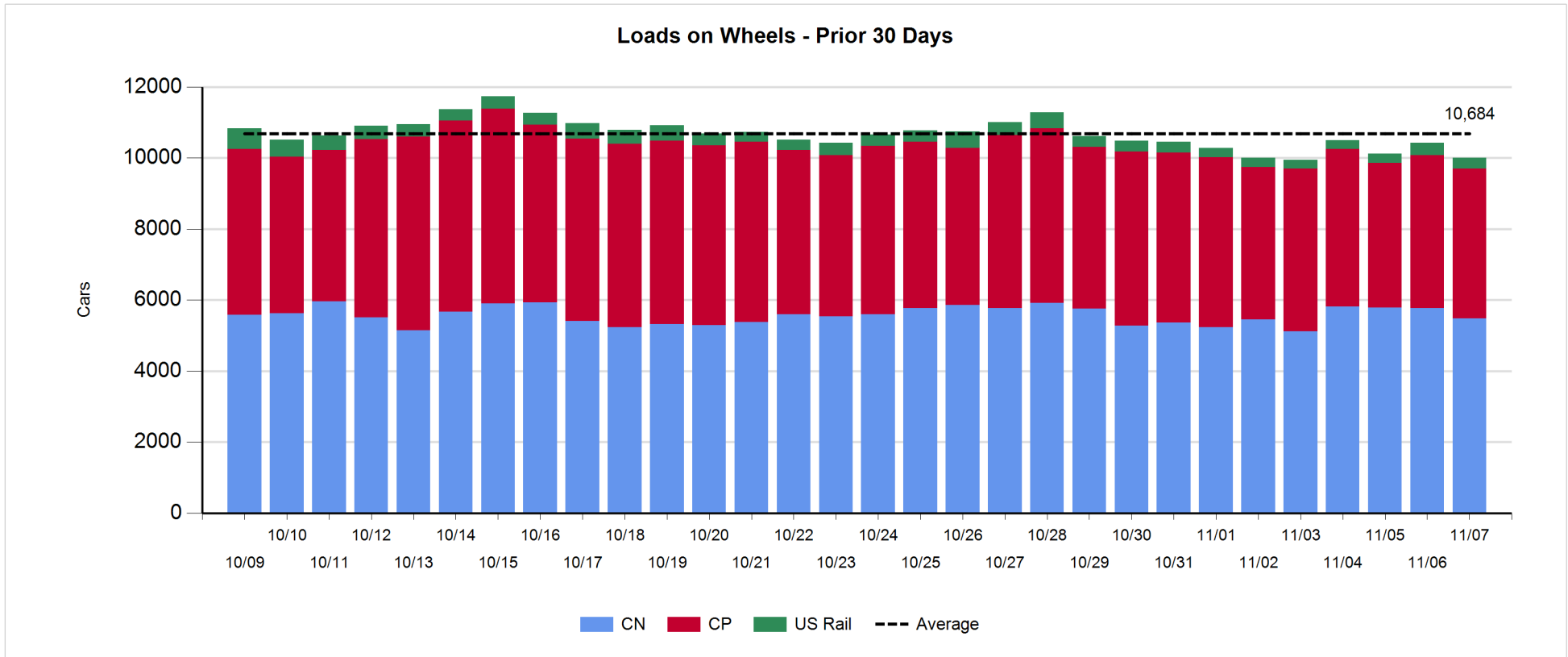
Correction: The report for November 8 reported a total of 314 cars unloaded by CP at Thunder Bay on November 6th. This count was incorrect due to incorrect reported movement events by CP. The correct unload count is 205; week to date statistics will be corrected.

Daily Loads on Wheels - 11/7/2017

	E Canada	Prince Rupert	Thunder Bay	USA/MEX	Vancouver	Total
CN	206	1,541	442	354	2,940	5,483
CP	146		861	419	2,789	4,215
Short Line					41	41
US Rail				268		268
	352	1,541	1,303	1,041	5,770	10,007

Change in Loads on Wheels - Prior 24 Hours

	E Canada	Prince Rupert	Thunder Bay	USA/MEX	Vancouver	Total
CN	27	-24	19	-10	-293	-281
CP	22		-145	28	-4	-99
Short Line	-2				-4	-6
US Rail				-34		-34
	47	-24	-126	-16	-301	-420

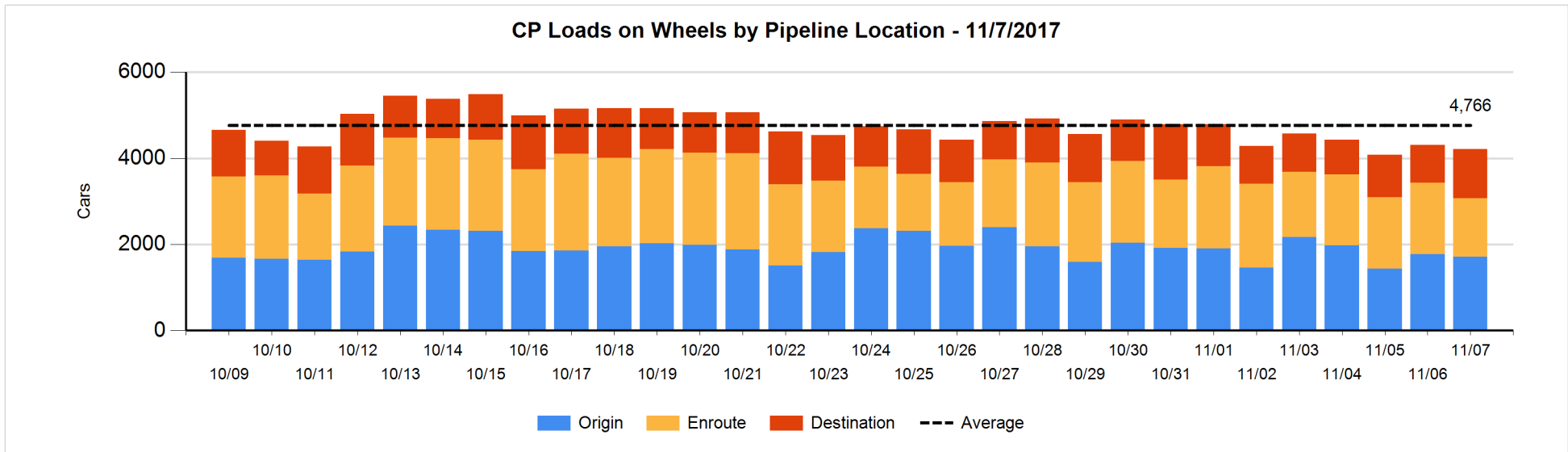
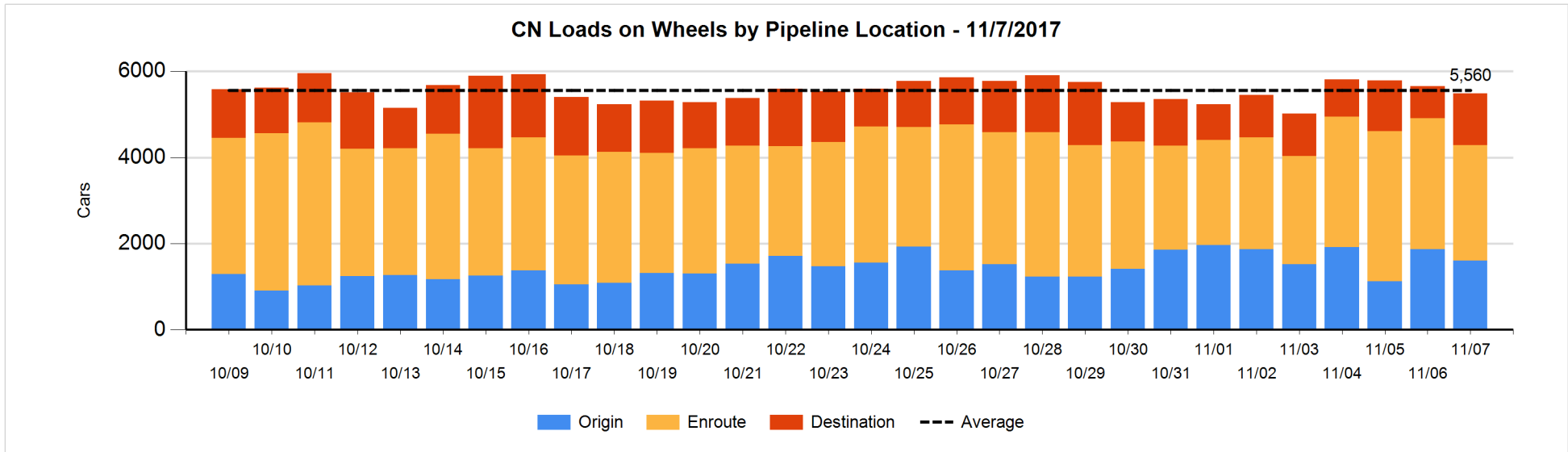


Daily Loads on Wheels By Pipeline Location - 11/7/2017

	E Canada	Prince Rupert	Thunder Bay	USA/MEX	Vancouver	Total
CN						
Origin	58	624	54	45	826	1,607
Enroute	114	631	215	204	1,515	2,679
Destination	34	286	173	105	599	1,197
	206	1,541	442	354	2,940	5,483
CP						
Origin	75		217	222	1,196	1,710
Enroute	70		74	190	1,031	1,365
Destination	1		570	7	561	1,139
	146		861	419	2,788	4,214
US Rail / Short Line						
Origin						
Enroute				219		219
Destination				49	41	90
				268	41	309

Change in Daily Loads on Wheels By Pipeline Location - Prior 24 Hours

	E Canada	Prince Rupert	Thunder Bay	USA/MEX	Vancouver	Total
CN						
Origin	49	-127	-44	33	-176	-265
Enroute	-9	-106	-74	-114	-60	-363
Destination	-13	209	137	71	48	452
	27	-24	19	-10	-188	-176
CP						
Origin	24		52	-44	-91	-59
Enroute	-2		-277	88	-100	-291
Destination	0		80	-16	187	251
	22		-145	28	-4	-99
US Rail / Short Line						
Origin						
Enroute				2		2
Destination	-2			-36	-4	-42
	-2			-34	-4	-40

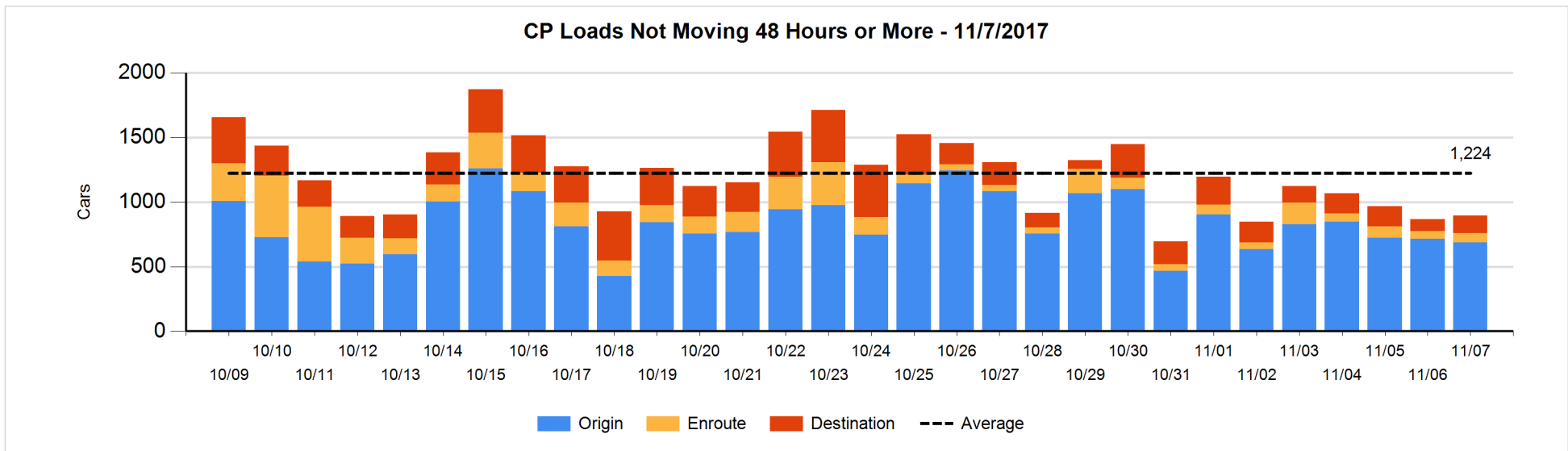
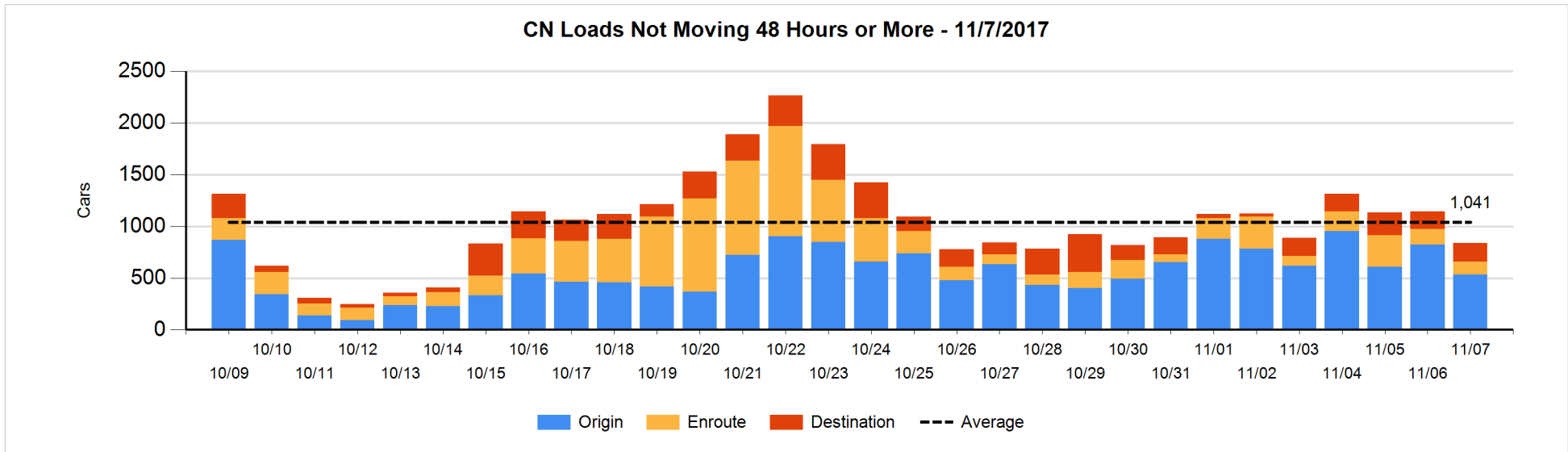


Loads Not Moving 48 Hours or More - 11/7/2017

	E Canada	Prince Rupert	Thunder Bay	USA/MEX	Vancouver	Total
CN						
Origin	6	152	1	7	365	531
Enroute	7	11		77	32	127
Destination	16	14	2		149	181
	29	177	3	84	546	839
CP						
Origin	51			52	583	686
Enroute	2		4	2	64	72
Destination	1		137		1	139
	54		141	54	648	897
US Rail / Short Line						
Origin						
Enroute				91		91
Destination				5		5
				96		96

Change in Loads Not Moving 48 Hours or More - 11/7/2017

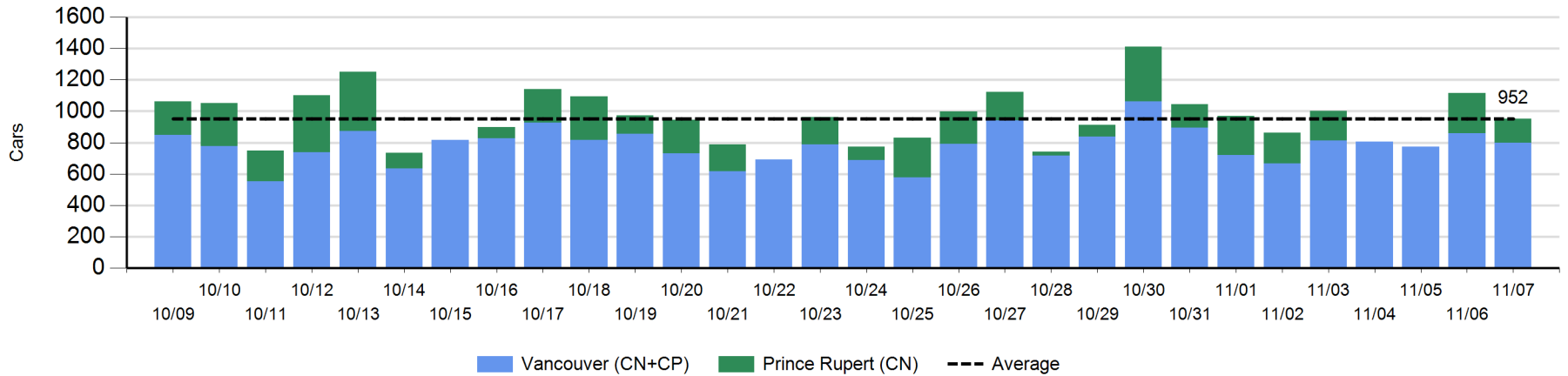
	E Canada	Prince Rupert	Thunder Bay	USA/MEX	Vancouver	Total
CN						
Origin	0	-103	-97	-1	-89	-290
Enroute	-8	0	-1	-12	-5	-26
Destination	-16	0	0		25	9
	-24	-103	-98	-13	-69	-307
CP						
Origin	0		-56	0	28	-28
Enroute	-2		2	-16	27	11
Destination	0		108	-6	-55	47
	-2		54	-22	0	30
US Rail / Short Line						
Origin						
Enroute				12		12
Destination	-1			-2	-1	-4
	-1			10	-1	8



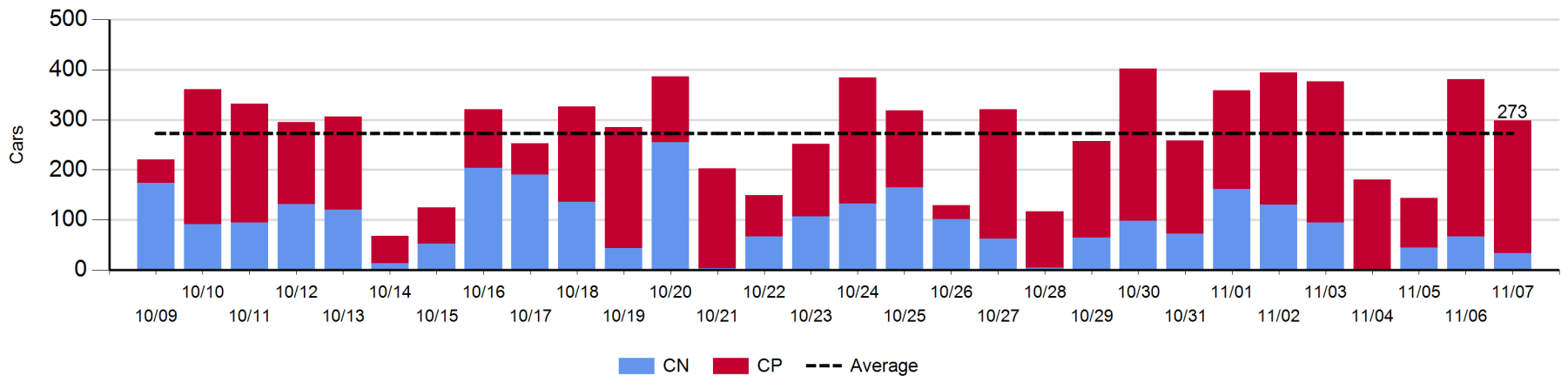
Port Unloads - 11/7/2017

	Prince Rupert	Vancouver	West Coast Total	Thunder Bay	Total
CN	153	377	530	34	564
CP		423	423	265	688
	153	800	953	299	1,252

West Coast Port Unloads - Prior 30 Days



Thunder Bay Port Unloads - Prior 30 Days



Port Terminal Status

Vancouver

Daily Activity for 11/7/2017

	Cars Arrived	Cars Received in Interchange	Cars Delivered in Interchange	Cars Placed for Unloading	Loads on Wheels at Destination As of 11/7/2017
CN	407	108	303	513	599
CP	628	297	109	497	561
SRY		7		9	41

Port Unloads

	11/07	11/06	Week To Date	Last Week
CN	377	567	944	3,040
CP	423	292	715	2,691
SRY	10	9	19	52

Age Profile of Loaded Cars Waiting Placement for Unloading

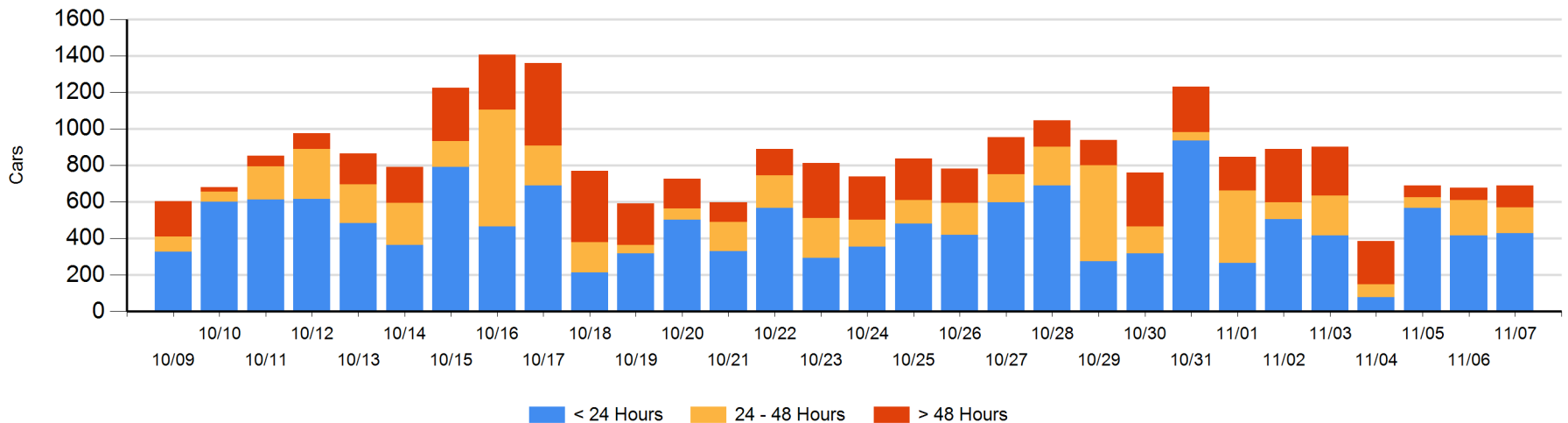
Today

	< 24 Hrs	24 - 48 Hrs	> 48-72 Hrs	> 72 Hrs	Total On Hand
CN	195	97	6	3	301
CP	235	44	53	56	388
SRY					0

Change in Last 24 Hours

	< 24 Hrs	24-48 Hrs	48 - 72 Hrs	> 72 Hrs
CN	-47	-13	6	-1
CP	61	-39	46	-2
SRY				

Loaded Cars on Hand Vancouver Waiting for Placement - Last 30 Days All Railways



Port Terminal Status

Prince Rupert

Daily Activity for 11/7/2017

	Cars Arrived	Cars Received in Interchange	Cars Delivered in Interchange	Cars Placed for Unloading	Loads on Wheels at Destination As of 11/7/2017
CN	362			258	286

Port Unloads

	11/07	11/06	Week To Date	Last Week
CN	153	255	408	1,134

Age Profile of Loaded Cars Waiting Placement for Unloading

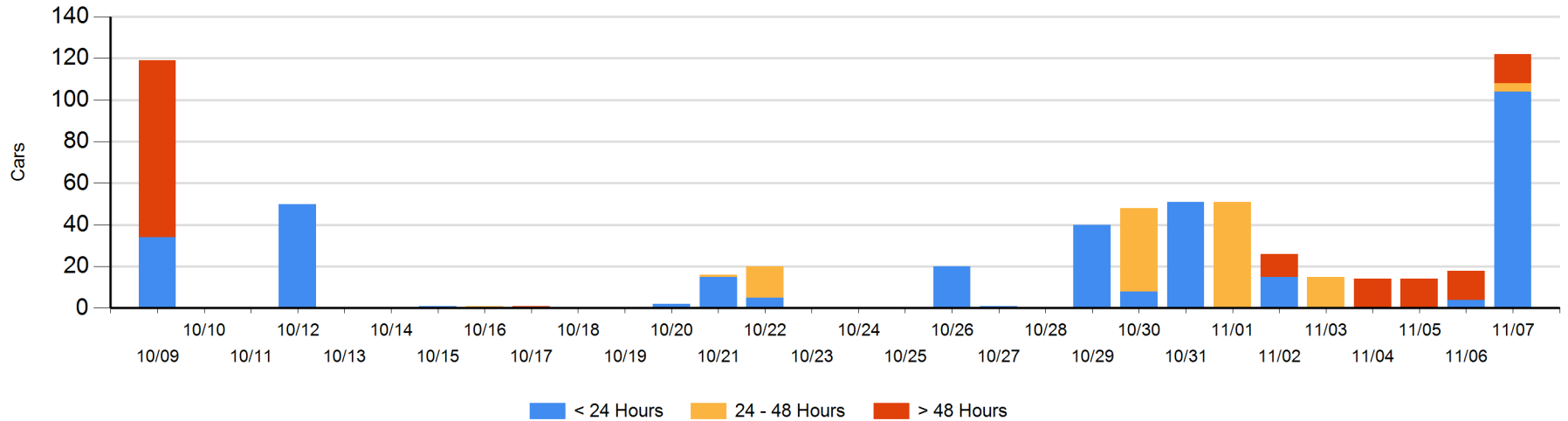
Today

	< 24 Hrs	24 - 48 Hrs	> 48-72 Hrs	> 72 Hrs	Total On Hand
CN	104	4		14	122

Change in Last 24 Hours

	< 24 Hrs	24-48 Hrs	48 - 72 Hrs	> 72 Hrs
CN	100	4		0

Loaded Cars on Hand Prince Rupert Waiting for Placement - Last 30 Days All Railways



Port Terminal Status

Thunder Bay

Daily Activity for 11/7/2017

	Cars Arrived	Cars Received in Interchange	Cars Delivered in Interchange	Cars Placed for Unloading	Loads on Wheels at Destination As of 11/7/2017
CN	171				173
CP	345			360	570

Port Unloads

	11/07	11/06	Week To Date	Last Week
CN	34	67	101	602
CP	265	314	579	1,512

Age Profile of Loaded Cars Waiting Placement for Unloading

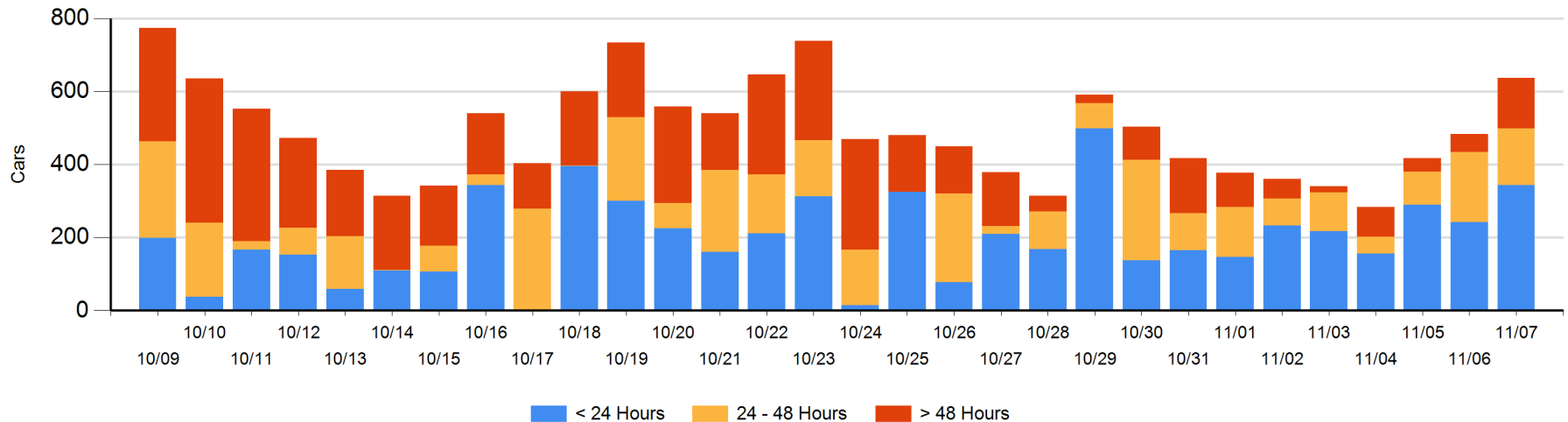
Today

	< 24 Hrs	24 - 48 Hrs	> 48-72 Hrs	> 72 Hrs	Total On Hand
CN	171				171
CP	172	155	100	39	466

Change in Last 24 Hours

	< 24 Hrs	24-48 Hrs	48 - 72 Hrs	> 72 Hrs
CN	171			
CP	-70	-37	73	17

Loaded Cars on Hand Thunder Bay Waiting for Placement - Last 30 Days All Railways



Measurement Definitions

Loads on Wheels	<p>Count of loaded rail cars including all rail cars that have been released loaded at origin and have not been reported by the railway as unloaded at destination.</p> <p>Counts include all rail cars (hopper cars and boxcars) moving within a pipeline.</p>
Loads Not Moving	<p>Loaded rail cars for which the railways have not reported a movement event for 48 hours or more whether the rail car is at origin, enroute or at destination.</p>
Port Unloads	<p>Count of rail cars reported by railways as unloaded at the western port destinations of Vancouver, Prince Rupert and Thunder Bay.</p> <p>Unload counts include all rail cars (hopper cars and boxcars) unloaded by all receivers including major port terminals, transloaders and other receivers.</p>
Cars Arrived	<p>Count of rail cars reported as arrived at the destination railway terminal.</p>
Cars Received in Interchange	<p>Count of rail cars received in interchange by each railway within a destination railway terminal. Interchange activity is tracked for the Vancouver and Thunder Bay pipelines as applicable.</p>
Cars Delivered in Interchange	<p>Count of rail cars delivered in interchange by each railway within a destination railway terminal. Interchange activity is tracked for the Vancouver and Thunder Bay pipelines as applicable.</p>
Cars Placed for Unloading	<p>Count of rail cars reported by the railways as placed loaded at the receiver's facility for unloading.</p>
Loads on Wheels at Destination	<p>Count of rail cars that remain under load within the destination railway terminal including rail cars that have been reported as placed for unloading but not yet reported as unloaded.</p>
Waiting Placement for Unloading	<p>Count of rail cars that have been reported as arrived at the destination railway terminal but not reported as placed for unloading by the railway.</p> <p>For the Ports of Vancouver, Prince Rupert and Thunder Bay the count of rail cars waiting placement for unloading is categorized by age – i.e. the elapsed time from arrival at destination to the current report date.</p>