

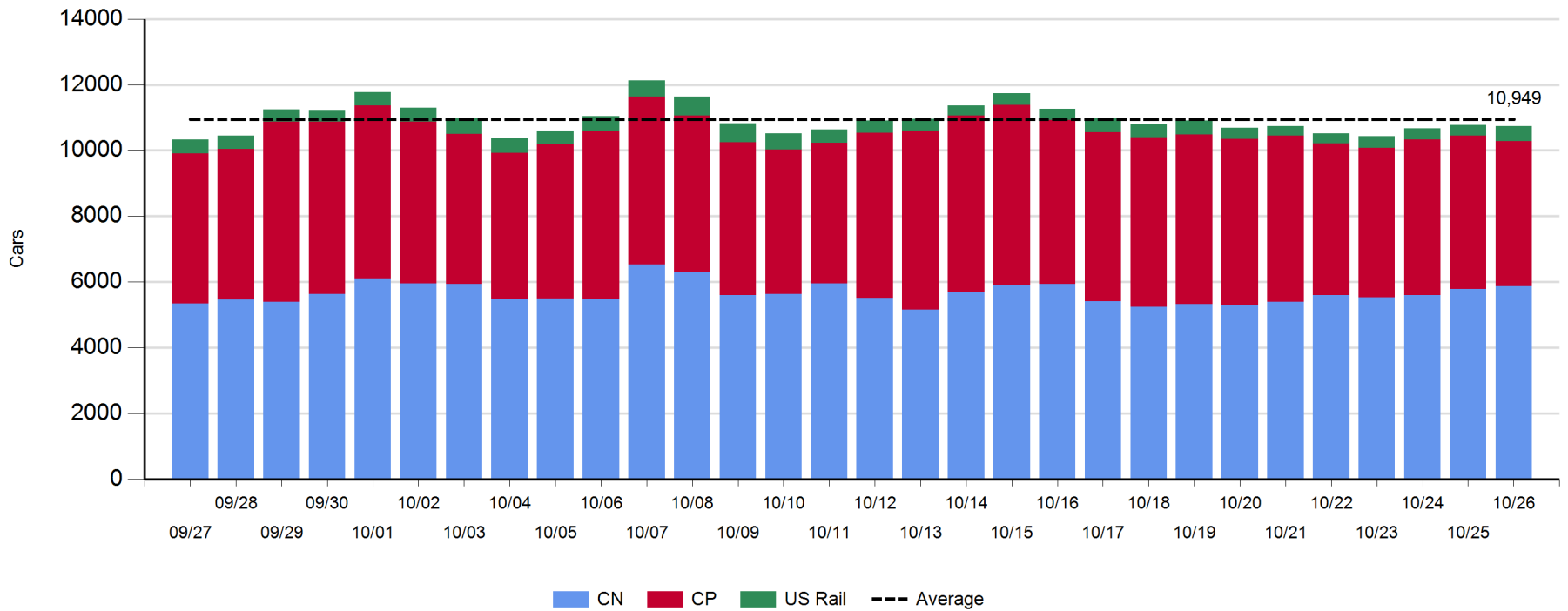
Daily Loads on Wheels - 10/26/2017

	E Canada	Prince Rupert	Thunder Bay	USA/MEX	Vancouver	Total
CN	279	1,549	614	299	3,117	5,858
CP	98		1,150	138	3,040	4,426
Short Line	9				35	44
US Rail				415		415
	386	1,549	1,764	852	6,192	10,743

Change in Loads on Wheels - Prior 24 Hours

	E Canada	Prince Rupert	Thunder Bay	USA/MEX	Vancouver	Total
CN	30	-175	3	50	174	82
CP	19		114	-113	-267	-247
Short Line	0				0	0
US Rail				130		130
	49	-175	117	67	-93	-35

Loads on Wheels - Prior 30 Days

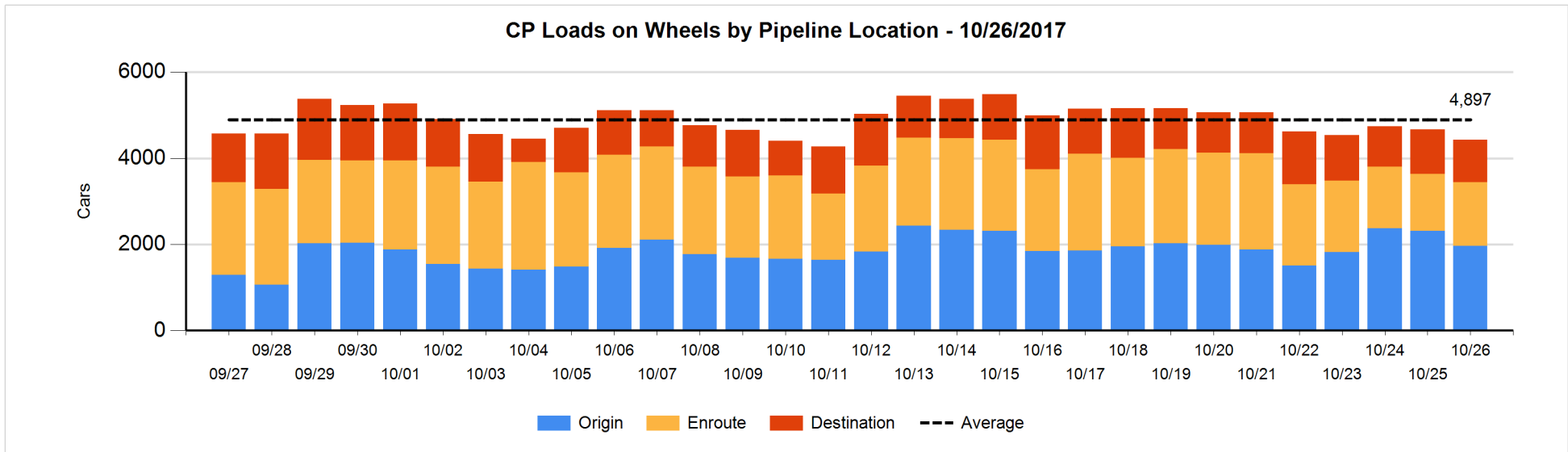
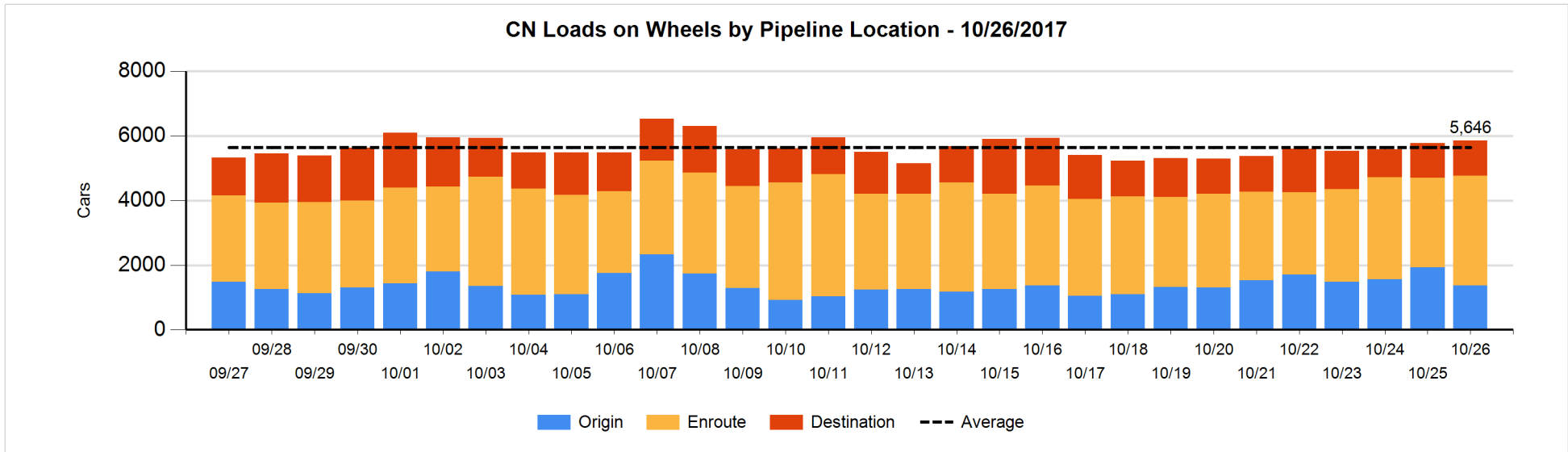


Daily Loads on Wheels By Pipeline Location - 10/26/2017

	E Canada	Prince Rupert	Thunder Bay	USA/MEX	Vancouver	Total
CN						
Origin	1	398	338	37	599	1,373
Enroute	220	896	175	252	1,852	3,395
Destination	58	255	101	10	666	1,090
	279	1,549	614	299	3,117	5,858
CP						
Origin	77		569	101	1,221	1,968
Enroute	20		170	35	1,253	1,478
Destination	1		411	2	566	980
	98		1,150	138	3,040	4,426
US Rail / Short Line						
Origin						
Enroute				306		306
Destination	9			109	35	153
	9			415	35	459

Change in Daily Loads on Wheels By Pipeline Location - Prior 24 Hours

	E Canada	Prince Rupert	Thunder Bay	USA/MEX	Vancouver	Total
CN						
Origin	-52	-90	-17	2	-403	-560
Enroute	75	-125	116	60	502	628
Destination	7	40	-96	-12	75	14
	30	-175	3	50	174	82
CP						
Origin	15		-24	1	-332	-340
Enroute	4		94	-104	158	152
Destination	0		44	-10	-93	-59
	19		114	-113	-267	-247
US Rail / Short Line						
Origin						
Enroute				142		142
Destination	0			-12	0	-12
	0			130	0	130

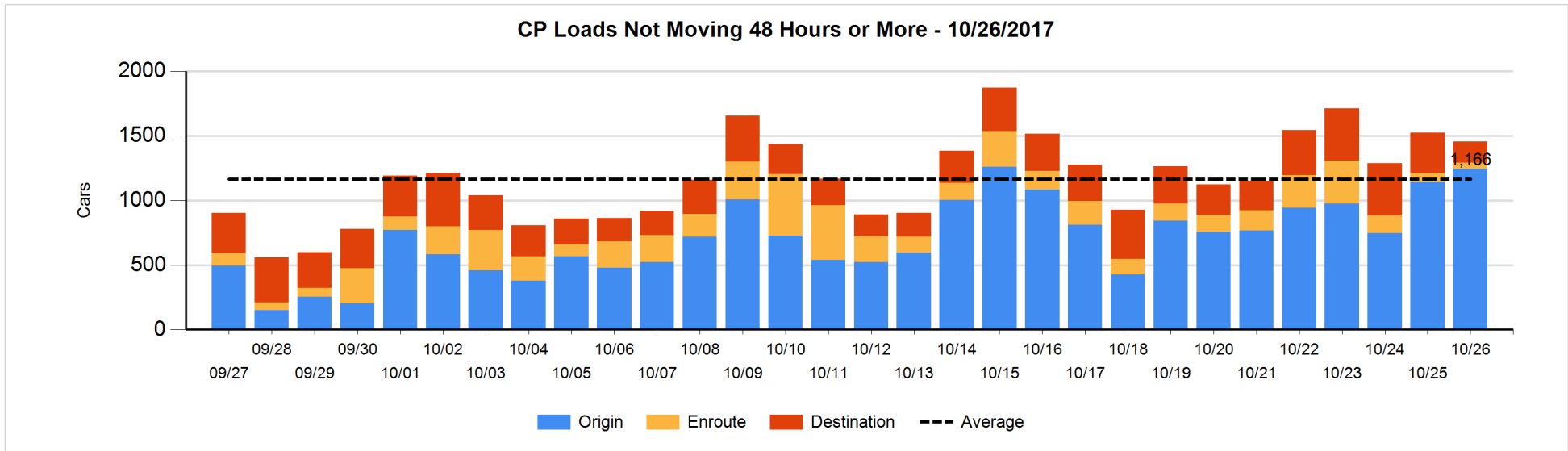
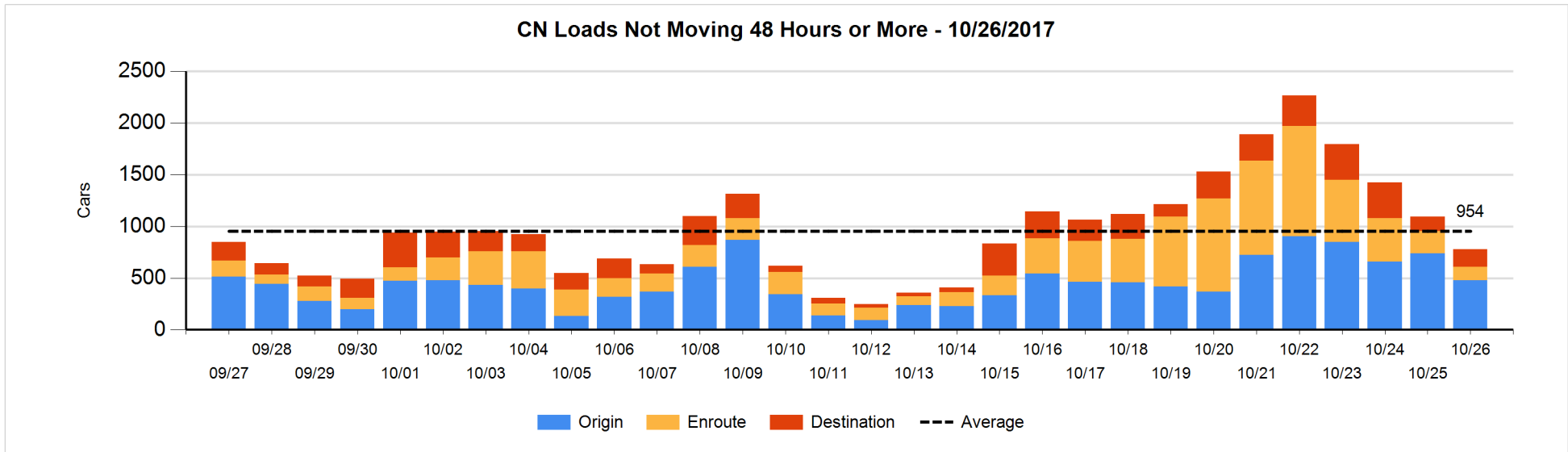


Loads Not Moving 48 Hours or More - 10/26/2017

	E Canada	Prince Rupert	Thunder Bay	USA/MEX	Vancouver	Total
CN						
Origin	1	367		6	103	477
Enroute	31	18		8	73	130
Destination	3	2	8	3	155	171
	35	387	8	17	331	778
CP						
Origin	58		349	100	737	1244
Enroute			3	28	15	46
Destination			131	2	33	166
	58		483	130	785	1456
US Rail / Short Line						
Origin						
Enroute				79		79
Destination	5			42	18	65
	5			121	18	144

Change in Loads Not Moving 48 Hours or More - 10/26/2017

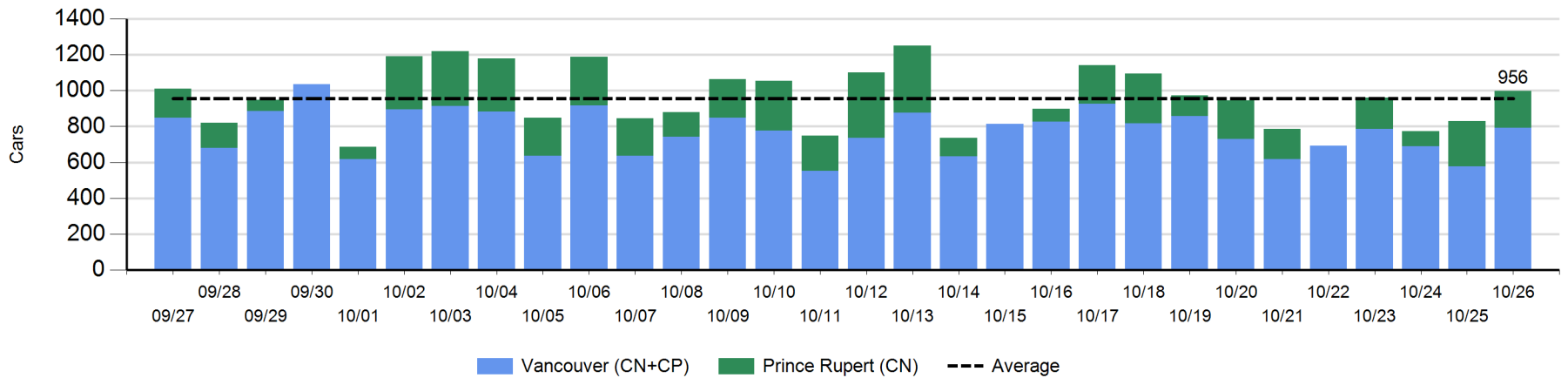
	E Canada	Prince Rupert	Thunder Bay	USA/MEX	Vancouver	Total
CN						
Origin	1	43		0	-307	-263
Enroute	21	-81		0	-24	-84
Destination	0	1	-6	-1	38	32
	22	-37	-6	-1	-293	-315
CP						
Origin	0		6	75	20	101
Enroute	-1		-1	0	-21	-23
Destination			-27	-10	-108	-145
	-1		-22	65	-109	-67
US Rail / Short Line						
Origin						
Enroute				-7		-7
Destination	5			-12	-2	-9
	5			-19	-2	-16



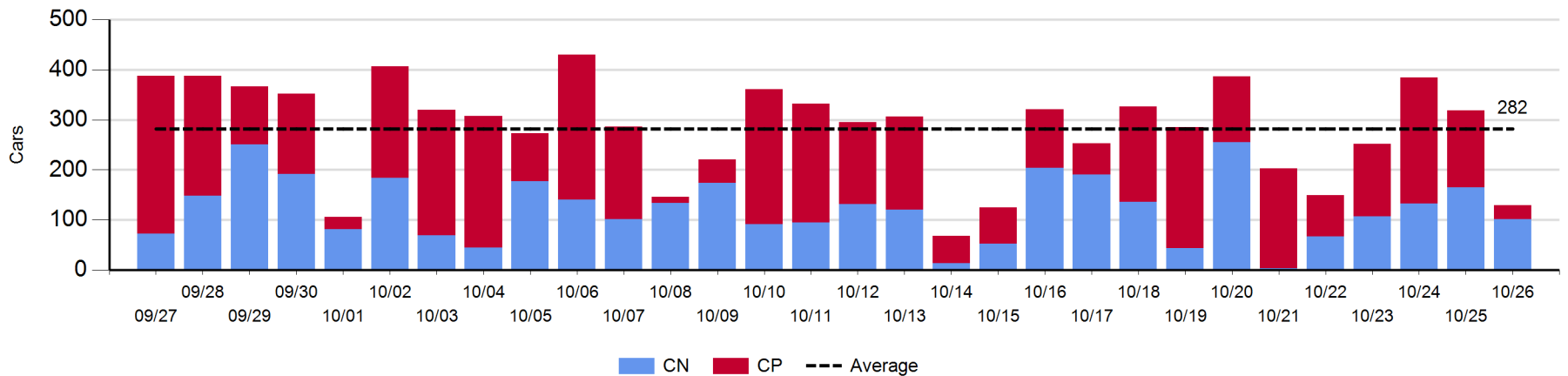
Port Unloads - 10/26/2017

	Prince Rupert	Vancouver	West Coast Total	Thunder Bay	Total
CN	206	341	547	101	648
CP		450	450	28	478
	206	791	997	129	1,126

West Coast Port Unloads - Prior 30 Days



Thunder Bay Port Unloads - Prior 30 Days



Port Terminal Status

Vancouver

Daily Activity for 10/26/2017

	Cars Arrived	Cars Received in Interchange	Cars Delivered in Interchange	Cars Placed for Unloading	Loads on Wheels at Destination As of 10/26/2017
CN	326	327	205	363	666
CP	458	205	331	460	566
SRY		4		15	35

Port Unloads

	10/26	10/25	Week To Date	Last Week
CN	341	257	1,408	2,911
CP	450	320	1,436	2,553
SRY	11	14	34	37

Age Profile of Loaded Cars Waiting Placement for Unloading

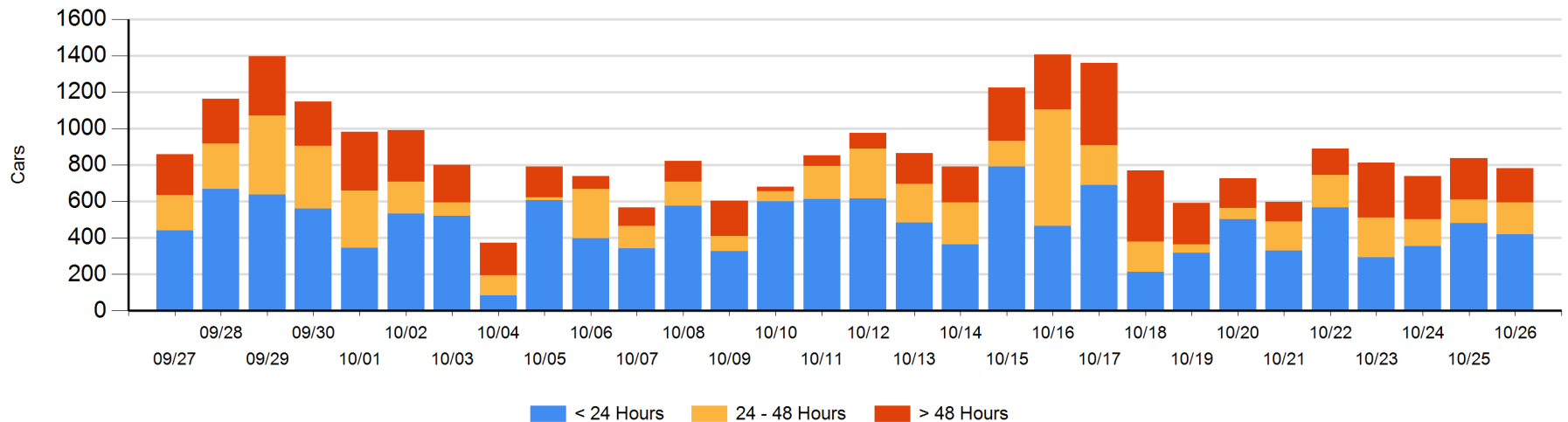
Today

	< 24 Hrs	24 - 48 Hrs	> 48-72 Hrs	> 72 Hrs	Total On Hand
CN	204	1	52	58	315
CP	217	173	51	25	466
SRY					0

Change in Last 24 Hours

	< 24 Hrs	24-48 Hrs	48 - 72 Hrs	> 72 Hrs
CN	99	-54	25	23
CP	-159	100	35	-126
SRY				

Loaded Cars on Hand Vancouver Waiting for Placement - Last 30 Days All Railways



Port Terminal Status

Prince Rupert

Daily Activity for 10/26/2017

	Cars Arrived	Cars Received in Interchange	Cars Delivered in Interchange	Cars Placed for Unloading	Loads on Wheels at Destination As of 10/26/2017
CN	246			226	255

Port Unloads

	10/26	10/25	Week To Date	Last Week
CN	206	253	718	1,064

Age Profile of Loaded Cars Waiting Placement for Unloading

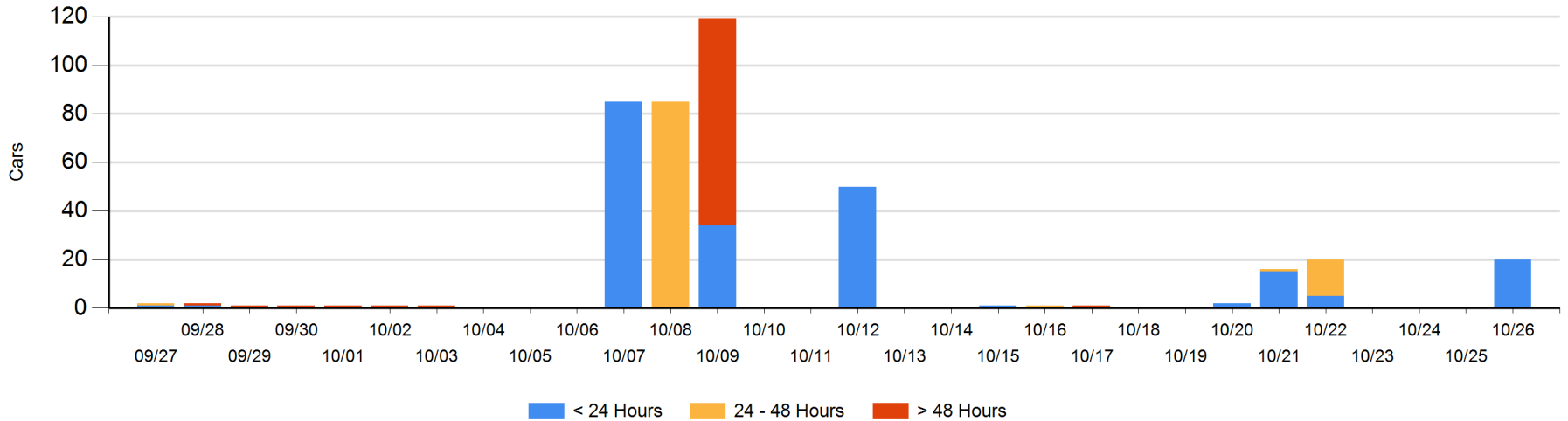
Today

	< 24 Hrs	24 - 48 Hrs	> 48-72 Hrs	> 72 Hrs	Total On Hand
CN	20				20

Change in Last 24 Hours

	< 24 Hrs	24-48 Hrs	48 - 72 Hrs	> 72 Hrs
CN	20			

Loaded Cars on Hand Prince Rupert Waiting for Placement - Last 30 Days All Railways



Port Terminal Status

Thunder Bay

Daily Activity for 10/26/2017

	Cars Arrived	Cars Received in Interchange	Cars Delivered in Interchange	Cars Placed for Unloading	Loads on Wheels at Destination As of 10/26/2017
CN	6			83	101
CP	72			27	411

Port Unloads

	10/26	10/25	Week To Date	Last Week
CN	101	165	506	901
CP	28	154	578	1,023

Age Profile of Loaded Cars Waiting Placement for Unloading

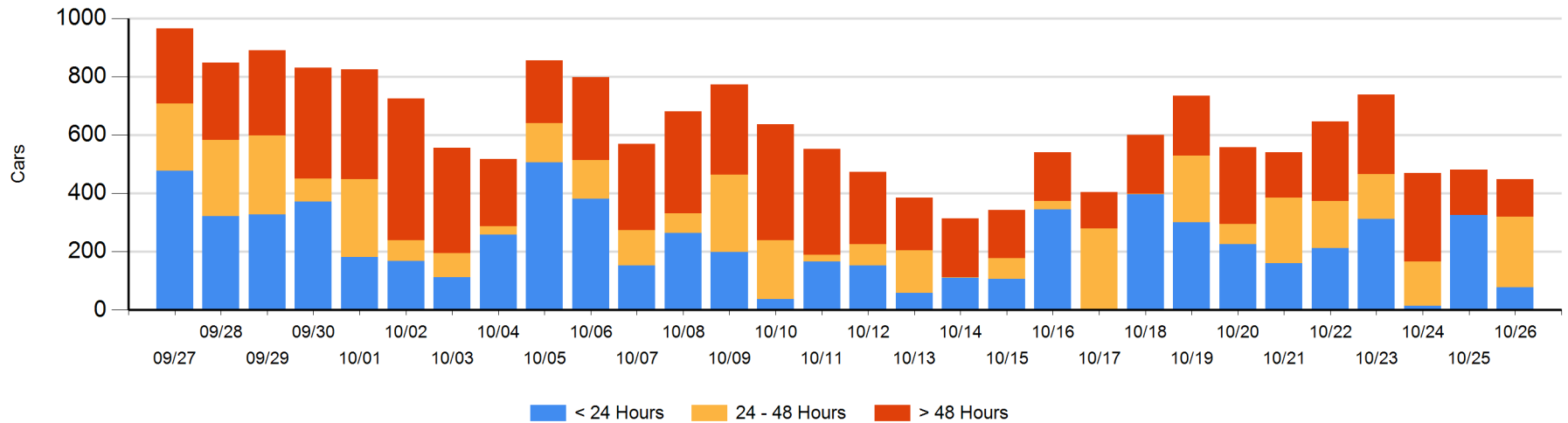
Today

	< 24 Hrs	24 - 48 Hrs	> 48-72 Hrs	> 72 Hrs	Total On Hand
CN	6	34			40
CP	72	208		129	409

Change in Last 24 Hours

	< 24 Hrs	24-48 Hrs	48 - 72 Hrs	> 72 Hrs
CN	-111	34		
CP	-136	208	-11	-16

Loaded Cars on Hand Thunder Bay Waiting for Placement - Last 30 Days All Railways



Measurement Definitions

Loads on Wheels	<p>Count of loaded rail cars including all rail cars that have been released loaded at origin and have not been reported by the railway as unloaded at destination.</p> <p>Counts include all rail cars (hopper cars and boxcars) moving within a pipeline.</p>
Loads Not Moving	<p>Loaded rail cars for which the railways have not reported a movement event for 48 hours or more whether the rail car is at origin, enroute or at destination.</p>
Port Unloads	<p>Count of rail cars reported by railways as unloaded at the western port destinations of Vancouver, Prince Rupert and Thunder Bay.</p> <p>Unload counts include all rail cars (hopper cars and boxcars) unloaded by all receivers including major port terminals, transloaders and other receivers.</p>
Cars Arrived	<p>Count of rail cars reported as arrived at the destination railway terminal.</p>
Cars Received in Interchange	<p>Count of rail cars received in interchange by each railway within a destination railway terminal. Interchange activity is tracked for the Vancouver and Thunder Bay pipelines as applicable.</p>
Cars Delivered in Interchange	<p>Count of rail cars delivered in interchange by each railway within a destination railway terminal. Interchange activity is tracked for the Vancouver and Thunder Bay pipelines as applicable.</p>
Cars Placed for Unloading	<p>Count of rail cars reported by the railways as placed loaded at the receiver's facility for unloading.</p>
Loads on Wheels at Destination	<p>Count of rail cars that remain under load within the destination railway terminal including rail cars that have been reported as placed for unloading but not yet reported as unloaded.</p>
Waiting Placement for Unloading	<p>Count of rail cars that have been reported as arrived at the destination railway terminal but not reported as placed for unloading by the railway.</p> <p>For the Ports of Vancouver, Prince Rupert and Thunder Bay the count of rail cars waiting placement for unloading is categorized by age – i.e. the elapsed time from arrival at destination to the current report date.</p>