

### Loads on Wheels

- System wide loads on wheels fell below 11,000 - now a 10,618 at decline of 660 cars in the prior 24 hours
- This represents a decrease of 6% during the prior 24 hours and is 3% below the trailing 30 day average - volumes in CN and CP pipelines declined by 2% and 7% respectively
- Loads on wheels declined in all corridors in the prior 24 hours with the exception of Prince Rupert which remained effectively unchanged
- Vancouver and Thunder Bay accounted for 84% of the change - again reflected in both CN and CP pipelines
- Vancouver now just above 6,000 cars and Thunder below 1,800

### Loads Not Moving

- The count of loaded cars not moving for 48 hours or more rose by more than 500 cars in the prior 24 hours from 1,800 to more than 2,300
- While both CN and CP saw increases in this area, CP accounted for more than 75% of the increase with an additional 400 cars not moving in the prior 24 hours
- CN
  - The count of cars not moving in the Prince Rupert corridor rose by 111 cars and sits at more than 450 representing half of all CN cars not moving followed by Vancouver at 323 which also increased by 65%
  - The majority of cars are dwelling loaded at origin and at destination
- CP
  - Vancouver (926) and Thunder Bay (222) pipelines account for 87% of all CP cars not moving
  - As with CN the majority of CP cars (81%) not moving are sitting at origin

### Port Performance

- CN and CP unloaded a total of 1,170 cars at the three western ports – approximately 30% above than average Sunday unloads during the prior 30 days
- Total unloads for week 14 are 8,178 approximately 300 lower than the prior week.
- Vancouver
  - With nearly 500 unloads at Vancouver CN reduced the gap from week 13 unloads but still fell short by almost 200 cars. CP as expected slightly outpaced last week's performance
- Thunder Bay
  - CN unloads for week 14 closed at slightly more than 600 - approximately 30% lower than the prior week while CP with higher than average Sunday unloads surpassed week 13 performance by approximately 10%

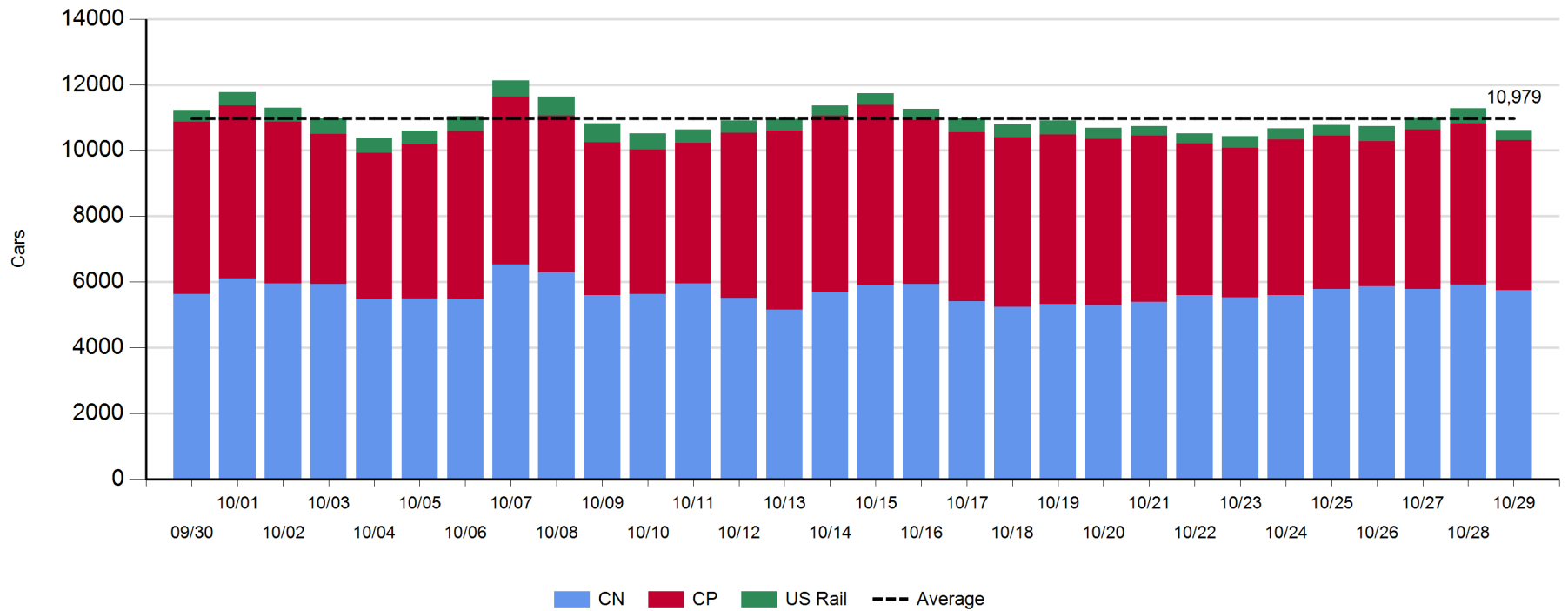
**Daily Loads on Wheels - 10/29/2017**

	E Canada	Prince Rupert	Thunder Bay	USA/MEX	Vancouver	Total
CN	269	1,608	660	378	2,839	5,754
CP	75		1,087	249	3,144	4,555
Short Line	8				24	32
US Rail				277		277
	352	1,608	1,747	904	6,007	10,618

**Change in Loads on Wheels - Prior 24 Hours**

	E Canada	Prince Rupert	Thunder Bay	USA/MEX	Vancouver	Total
CN	-23		25	-65	34	-127
CP	2		-190	-1		-175
Short Line	8				4	12
US Rail				-153		-153
	-13	25	-255	-120	-298	-661

**Loads on Wheels - Prior 30 Days**



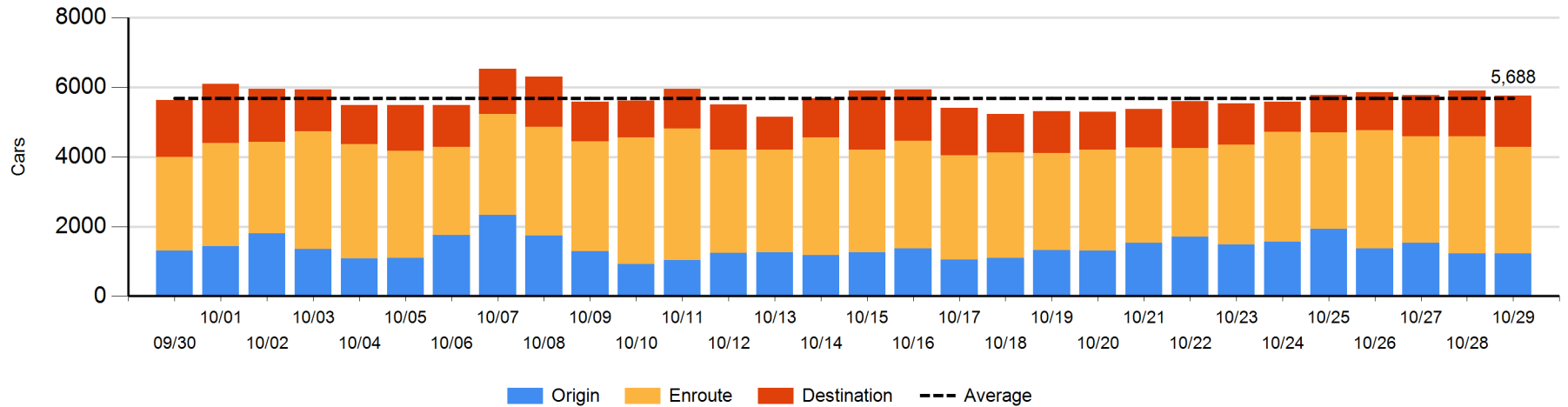
**Daily Loads on Wheels By Pipeline Location - 10/29/2017**

	E Canada	Prince Rupert	Thunder Bay	USA/MEX	Vancouver	Total
CN						
Origin	6	322	8	10	880	1,226
Enroute	228	760	382	354	1,340	3,064
Destination	35	526	270	14	619	1,464
	269	1,608	660	378	2,839	5,754
CP						
Origin	31		236	107	1,212	1,586
Enroute	38		397	142	1,275	1,852
Destination	6		454		657	1,117
	75		1,087	249	3,144	4,555
US Rail / Short Line						
Origin						
Enroute				223		223
Destination	8			54	24	86
	8			277	24	309

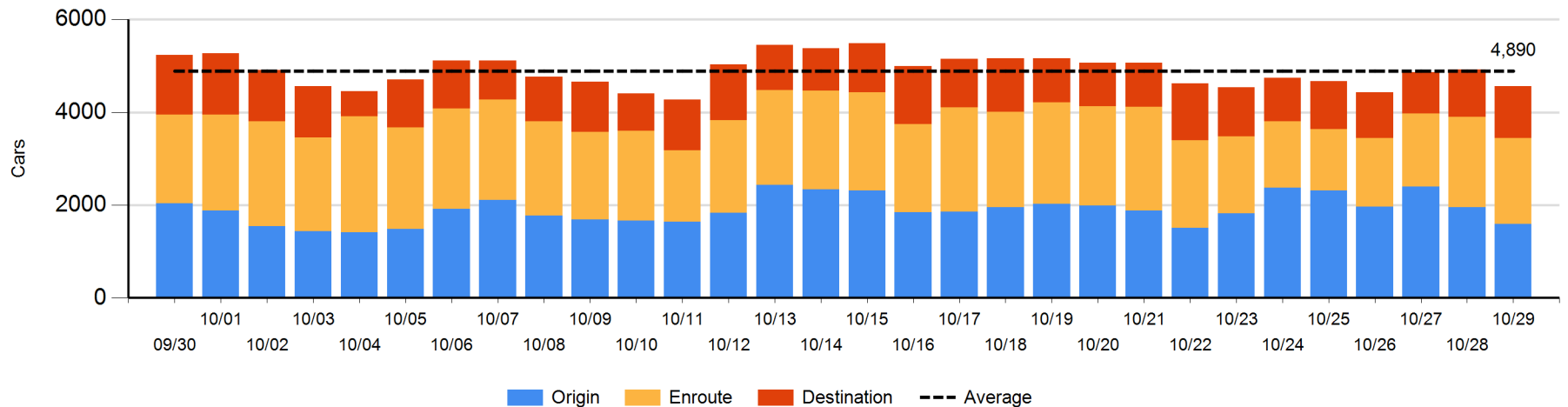
**Change in Daily Loads on Wheels By Pipeline Location - Prior 24 Hours**

	E Canada	Prince Rupert	Thunder Bay	USA/MEX	Vancouver	Total
CN						
Origin	0	-106	-100	-20	226	0
Enroute	-8	13	-100	54	-253	-294
Destination	-15	118	135	0	-100	138
	-23	25	-65	34	-127	-156
CP						
Origin	-9		-275	0	-86	-370
Enroute	11		-53	-1	-48	-91
Destination	0		138		-41	97
	2		-190	-1	-175	-364
US Rail / Short Line						
Origin						
Enroute				-63		-63
Destination	8			-90	4	-78
	8			-153	4	-141

**CN Loads on Wheels by Pipeline Location - 10/29/2017**



**CP Loads on Wheels by Pipeline Location - 10/29/2017**

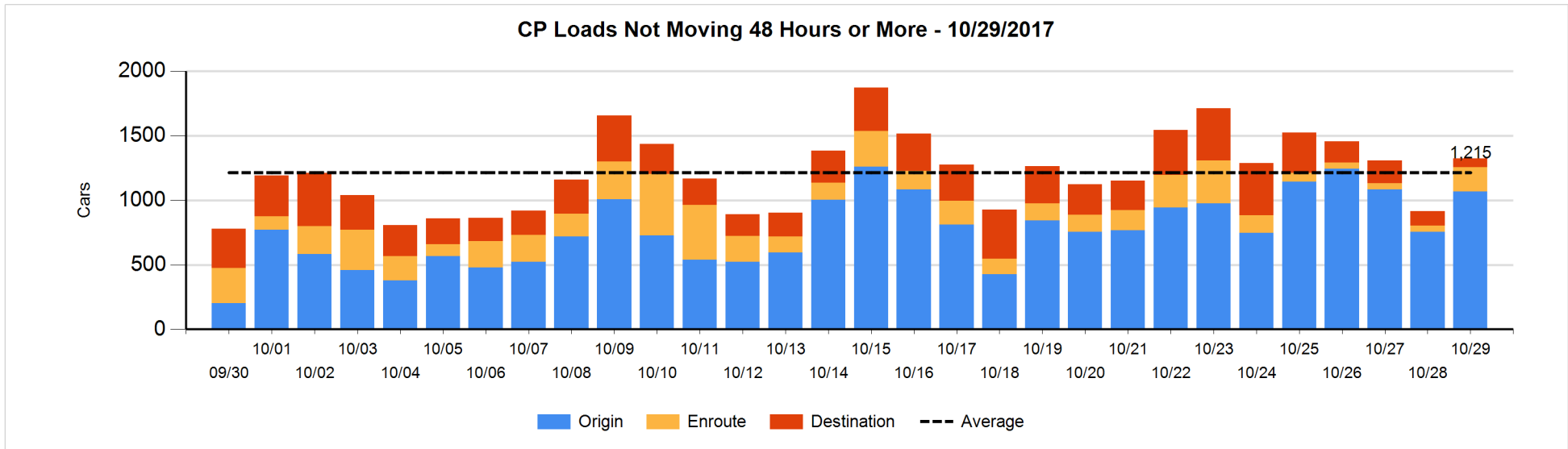
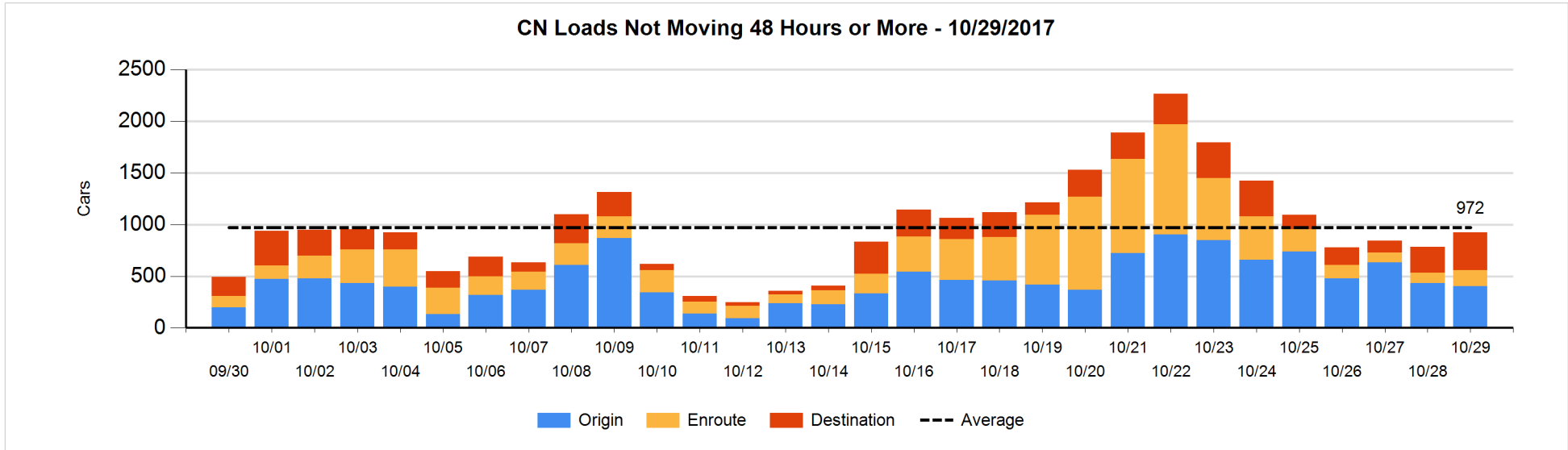


**Loads Not Moving 48 Hours or More - 10/29/2017**

	E Canada	Prince Rupert	Thunder Bay	USA/MEX	Vancouver	Total
<b>CN</b>						
Origin	1	124		10	267	402
Enroute	48	21	1	34	51	155
Destination	34	314	7	6	5	366
	83	459	8	50	323	923
<b>CP</b>						
Origin	28		195	107	739	1069
Enroute	3		3	35	145	186
Destination	1		24		42	67
	32		222	142	926	1322
<b>US Rail / Short Line</b>						
Origin						
Enroute				88		88
Destination				25	7	32
				113	7	120

**Change in Loads Not Moving 48 Hours or More - 10/29/2017**

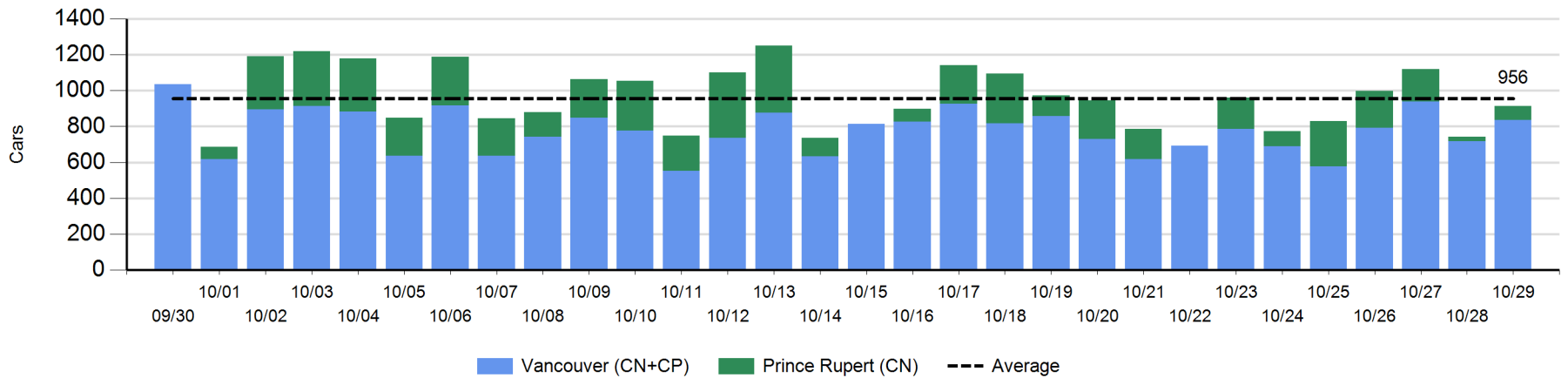
	E Canada	Prince Rupert	Thunder Bay	USA/MEX	Vancouver	Total
<b>CN</b>						
Origin	1	-83	-100	3	148	-31
Enroute	16	16	1	-12	36	57
Destination	-7	178	-1	1	-57	114
	10	111	-100	-8	127	140
<b>CP</b>						
Origin	-10		-40	57	308	315
Enroute	3		-4	9	129	137
Destination	0		-21		-25	-46
	-7		-65	66	412	406
<b>US Rail / Short Line</b>						
Origin						
Enroute				7		7
Destination				-11	-8	-19
				-4	-8	-12



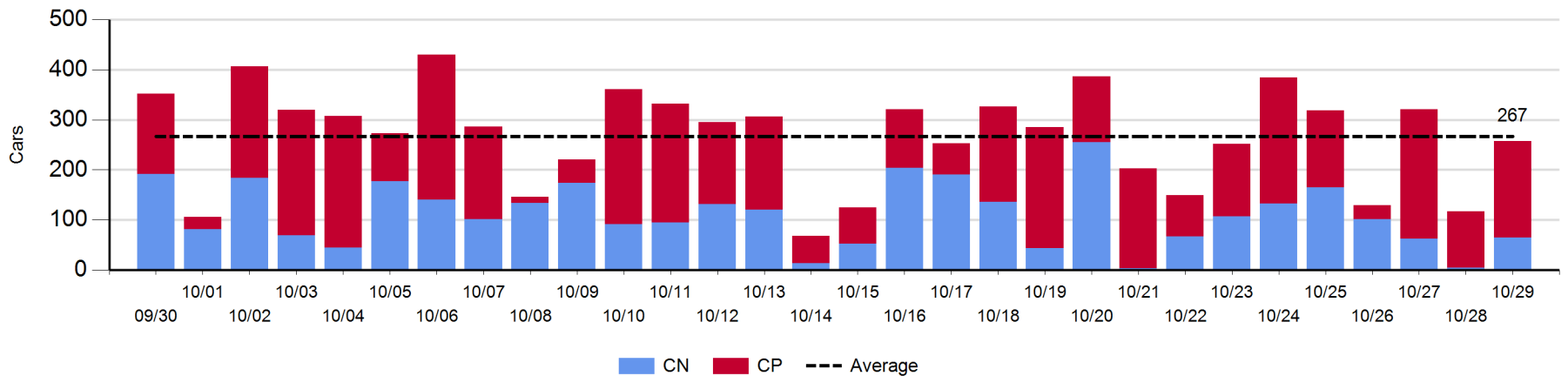
**Port Unloads - 10/29/2017**

	Prince Rupert	Vancouver	West Coast Total	Thunder Bay	Total
CN	77	499	576	65	641
CP		337	337	192	529
	77	836	913	257	1,170

**West Coast Port Unloads - Prior 30 Days**



**Thunder Bay Port Unloads - Prior 30 Days**



**Port Terminal Status**

**Vancouver**

Daily Activity for 10/29/2017

	Cars Arrived	Cars Received in Interchange	Cars Delivered in Interchange	Cars Placed for Unloading	Loads on Wheels at Destination As of 10/29/2017
CN	200	154	119	499	619
CP	437	119	156	287	657
SRY		2		6	24

**Port Unloads**

	10/29	10/28	Week To Date	Last Week
CN	499	276	2,728	2,911
CP	337	441	2,609	2,553
SRY	1	9	60	37

**Age Profile of Loaded Cars Waiting Placement for Unloading**

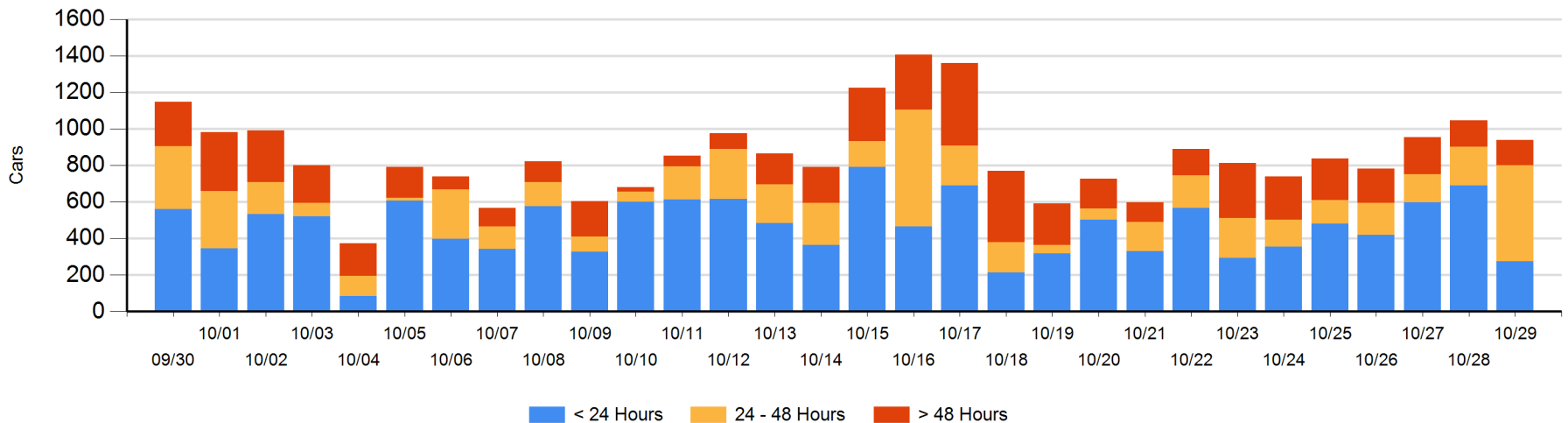
**Today**

	< 24 Hrs	24 - 48 Hrs	> 48-72 Hrs	> 72 Hrs	Total On Hand
CN	89	21	23		133
CP	185	505	22	93	805
SRY					0

**Change in Last 24 Hours**

	< 24 Hrs	24-48 Hrs	48 - 72 Hrs	> 72 Hrs
CN	-85	-169	23	-7
CP	-330	482	-18	-6
SRY				

**Loaded Cars on Hand Vancouver Waiting for Placement - Last 30 Days All Railways**





**Port Terminal Status**

**Prince Rupert**

Daily Activity for 10/29/2017

	Cars Arrived	Cars Received in Interchange	Cars Delivered in Interchange	Cars Placed for Unloading	Loads on Wheels at Destination As of 10/29/2017
CN	144			144	526

**Port Unloads**

	10/29	10/28	Week To Date	Last Week
CN	77	26	1,002	1,064

**Age Profile of Loaded Cars Waiting Placement for Unloading**

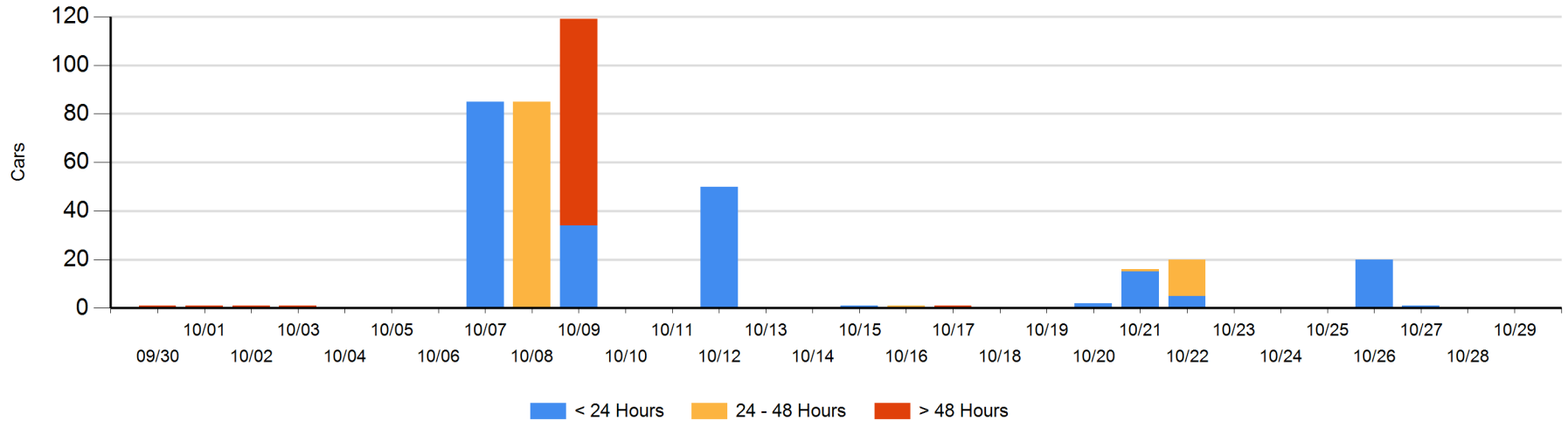
**Today**

	< 24 Hrs	24 - 48 Hrs	> 48-72 Hrs	> 72 Hrs	Total On Hand
CN					0

**Change in Last 24 Hours**

	< 24 Hrs	24-48 Hrs	48 - 72 Hrs	> 72 Hrs
CN				

Loaded Cars on Hand Prince Rupert Waiting for Placement - Last 30 Days All Railways



**Port Terminal Status**

**Thunder Bay**

Daily Activity for 10/29/2017

	Cars Arrived	Cars Received in Interchange	Cars Delivered in Interchange	Cars Placed for Unloading	Loads on Wheels at Destination As of 10/29/2017
CN	200				270
CP	330			254	454

**Port Unloads**

	10/29	10/28	Week To Date	Last Week
CN	65	5	639	901
CP	192	112	1,140	1,023

**Age Profile of Loaded Cars Waiting Placement for Unloading**

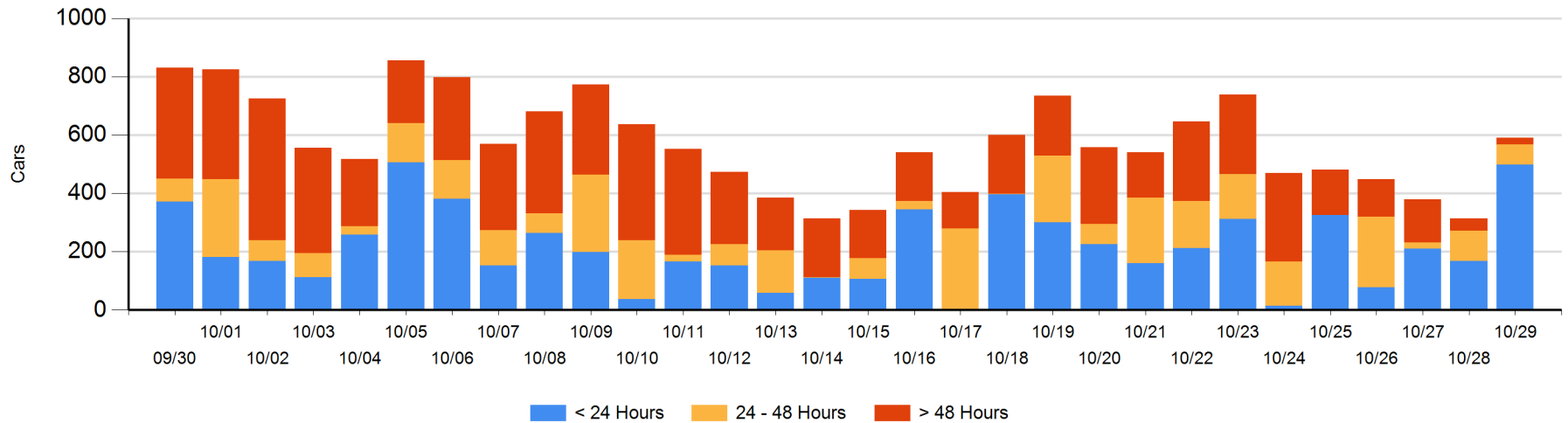
**Today**

	< 24 Hrs	24 - 48 Hrs	> 48-72 Hrs	> 72 Hrs	Total On Hand
CN	200				200
CP	298	70	7	16	391

**Change in Last 24 Hours**

	< 24 Hrs	24-48 Hrs	48 - 72 Hrs	> 72 Hrs
CN	200			
CP	130	-33	-9	-12

**Loaded Cars on Hand Thunder Bay Waiting for Placement - Last 30 Days All Railways**



## Measurement Definitions

Loads on Wheels	<p>Count of loaded rail cars including all rail cars that have been released loaded at origin and have not been reported by the railway as unloaded at destination.</p> <p>Counts include all rail cars (hopper cars and boxcars) moving within a pipeline.</p>
Loads Not Moving	<p>Loaded rail cars for which the railways have not reported a movement event for 48 hours or more whether the rail car is at origin, enroute or at destination.</p>
Port Unloads	<p>Count of rail cars reported by railways as unloaded at the western port destinations of Vancouver, Prince Rupert and Thunder Bay.</p> <p>Unload counts include all rail cars (hopper cars and boxcars) unloaded by all receivers including major port terminals, transloaders and other receivers.</p>
Cars Arrived	<p>Count of rail cars reported as arrived at the destination railway terminal.</p>
Cars Received in Interchange	<p>Count of rail cars received in interchange by each railway within a destination railway terminal. Interchange activity is tracked for the Vancouver and Thunder Bay pipelines as applicable.</p>
Cars Delivered in Interchange	<p>Count of rail cars delivered in interchange by each railway within a destination railway terminal. Interchange activity is tracked for the Vancouver and Thunder Bay pipelines as applicable.</p>
Cars Placed for Unloading	<p>Count of rail cars reported by the railways as placed loaded at the receiver's facility for unloading.</p>
Loads on Wheels at Destination	<p>Count of rail cars that remain under load within the destination railway terminal including rail cars that have been reported as placed for unloading but not yet reported as unloaded.</p>
Waiting Placement for Unloading	<p>Count of rail cars that have been reported as arrived at the destination railway terminal but not reported as placed for unloading by the railway.</p> <p>For the Ports of Vancouver, Prince Rupert and Thunder Bay the count of rail cars waiting placement for unloading is categorized by age – i.e. the elapsed time from arrival at destination to the current report date.</p>